

# EL PUENTE DE GALISTEO

ISSUE #170

DECEMBER 2013

## MERRY XMAS \* HAPPY HOLIDAYS \* FELIZ AÑO NUEVO

Good news for EL PUENTE: An anonymous donor has funded postage for the coming year, and John and Tanya Young also made a generous contribution. So no e-puente yet....

### HOLIDAY FAIRE

Despite snow and cold affecting attendance, the Galisteo Artisans' Faire was a warm community event, attracting enough visitors to keep it busy. Many thanks to Julia Cairns who took on the organization, Evelyne Franceschi for designing the post card, David van Dyk and Eric Thomas for putting up road signs, Glen Snell for his wonderful flute music (*see photo below by Barbara King*), Vicki Snyder for donating an ad in *Pasatiempo*, and Deirdre Morgan who ran the raffle. We made \$266 for the GVFR community gift baskets.

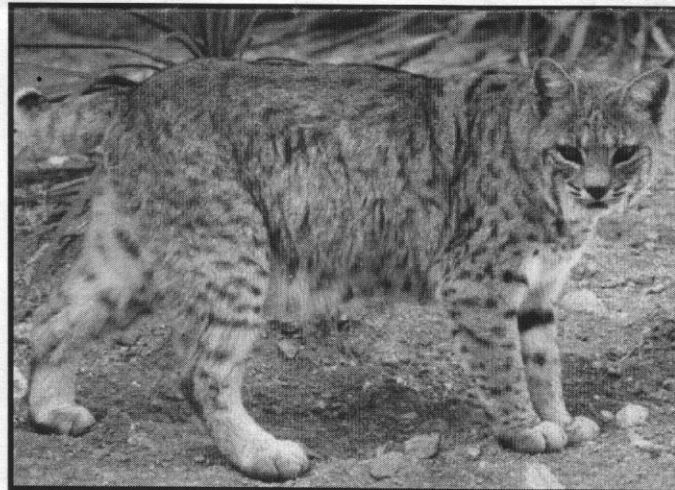
Please feel free to send Julia your thoughts on how we can improve on this event next year. It will take a few years to gather momentum, but we are off to a good start. We will meet in the Spring to discuss next year's Faire, which will be at La Sala de Galisteo!



### LOS PASTORES IN GALISTEO'S PAST

The performance of Los Pastores at Nuestra Señora de los Remedios on December 15<sup>th</sup> was the first time it has taken place in Galisteo since 1964. The December 1997 issue of EL PUENTE ran a photograph of the Galisteo version around 1940, with Chavez, Sena, Anaya, and Sandoval elders participating. Mela Montoya wrote a reminiscence. At age eleven or so, and for many years afterwards, she was "the Gila," accompanying the *pastores* (shepherds). Rehearsals were overseen by the Sena family, who also stored the costumes. In 1964, Mela's oldest daughter Geraldine played Gila, and Rudy Sena was Lucifer.

Los Pastores -- a drama about shepherds' search for the newborn Christ Child -- originated in 16<sup>th</sup> century Spain, one of a series of *autos sacramentales* illustrating lessons in faith in the days when few could read. It was traditionally preceded (in Galisteo as well) by Las Posadas -- Mary and Joseph going from house to house seeking shelter; each household would hand out treats or money. Though fading, these traditions are still maintained in New Mexico. If you missed the event in Galisteo, there is one on Dec. 20<sup>th</sup> at St. Anne's Catholic Church in Santa Fe. Call 575-758-4020 for other venues.



We have Bob the Cop, now Bob the Cat, caught by Roger Taylor sunning himself on the portal.

## PUBLIC HEARING ON SLDC ADOPTION DRAFT

The last public hearing on draft changes to the Sustainable Land Development Code took place on December 3rd. The Board of County Commissioners could vote to approve it as early as Dec. 10<sup>th</sup>, although there are still many important details not yet agreed upon. Our commissioner, Robert Anaya, was absent, as was Liz Stefanics. Chairman Kathy Holian asked for comments on the code only, not on personal property zoning. The County will be zoned for the first time and the zoning map will not be released until Spring. When it is approved the code will finally go into effect.

One of the lawyers hired to work on the code touted its virtues as a "fiscally conservative document" that will protect the County from expensive litigation. Among its virtues is the requirement that developers cover more of the expenses of added infrastructure demanded by their projects. Penny Ellis-Green, the Growth Management Director, said that if a road is not on the county's capital improvement plan for seven years, the developers can wait or build it themselves. Another advantage is an expanded community notification process, even pre-application for larger projects, so the public will have more say and more warning about what's coming down the pike.

One of the most contentious issues concerns the number of horses permitted near residential areas, which will vary according to zones. As it stands now, more than 6 horses (during the negotiations it was 5 and then 12) demands a more regulated commercial permit. Roger Taylor, our resident expert on the code, suggests the necessity to look at room to exercise, manure issues, and water: does the county allotment of .25 acre feet for a residence suffice for a large number of horses?

One speaker felt the zoning had been determined much too quickly. (Commissioner Miguel Chavez hopes that the code will not be frozen in place but will continue to be updated and revised.) Another demanded that the section on variances be deleted as it encourages the corruption endemic in county land use history. A representative of the League of Women Voters opposed changes on the uses of surface and ground water and another woman requested a more specific definition of the vague term "garden" in the water context. The terms domestic and indoor concerning use of the allotted .25 acre feet of water are also misleading when residential use actually includes both indoor and outdoor. Taylor also points out that the confusion of agricultural water rights and water usage rights "would be a dangerous precedent." And he is not sure why "the longstanding proof of a 100 year water supply has been reduced to a 40 year supply." Perhaps because 40 is the State designated minimum and "hydrologists will say that proving a 100-year supply is difficult and inexact"?

Frank Hirsch of Galisteo ceded his two minutes to Walter Waite, from the western Galisteo Basin, to oppose the way our hard-fought community plans were ignored and the fact that we will be required to write them all over again to coincide with the code, which would be hard on both communities and County staff. He suggested a different process by which to include our work.

All references to climate change were deleted (maybe because it's hard to legally define, or to politically defend) but

the words drought and climate remained. Sand and gravel mines are still in play; at the moment they are permitted up to 20 acres if no blasting is involved-- already a big operation.

---

## PEDACITOS/BITS AND PIECES

**Matthew McQueen** was featured in *The New Mexican*: "Galisteo Lawyer running for Easley's House District 50 Seat" (11/14). District 50, where Democrats outnumber Republicans by about 46 to 33%, is a long jagged patch including parts of Bernalillo, Tarrant, Valencia and Santa Fe counties.

Republican Vickie Perea will fill out Easley's term until the primary on June 3<sup>rd</sup>. The election is November 4<sup>th</sup>.

Matthew has an impressive vita. He graduated *cum laude* from Williams College in Environmental Studies and Political Science, *cum laude* from the University of Michigan Law School, and has an MBA from UNM. He has lived in New Mexico for 17 years (and in Galisteo for seven). Matthew has worked for the Taos Land Trust/New Mexico Land Conservation Collaborative, the Santa Fe Conservation Trust, and the Office of the State Engineer/Interstate Stream Commission. He is on the Board of the Santa Fe Green Chamber of Commerce, serves on the Citizen's Committee of the Santa Fe River Commission, the Galisteo Water Association, and the GCA. He was on the Galisteo Community Planning Committee and the County Open Space and Trails Committee.

**Harmony Hammond's** New York show was reviewed in *The Wall Street Journal* and *The New York Times*, where critic Holland Cotter wrote, "If Ms. Hammond hadn't left New York when she did, her profile here would undoubtedly be higher. On the other hand, she might not have been able to explore the politics of abstraction as consistently, adamantly and beautifully as she has. In any case, a serious retrospective here is in order."

She's Back... in Galisteo. Longtime sometime resident "Latin-music songstress" **Nacha Mendez (Marghreta Cordero)** was featured in the October *New Mexico Magazine*. She performs weekly at El Farol (Wed., 8-11), La Boca (Thurs. 7-9) and La Posada's Staab House (Fri., 6:30-9:30). Nacha says she is inspired by the New Mexico landscape, which "allows a lot of openness, but there's also a lot of pain, a lot of stuff that goes really deep with my roots here."

\$85,000 has been allotted for **work on the Bosque** (see last issue) thanks to hard work by the GCA. Despite his support for this project, State Senator Phil Griego received a meager 21% score on the Conservation Voters of New Mexico score card this year, down from a career-long rating of 51%.

**Bruce Nauman's** latest exhibition at Sperone Westwater gallery in New York is up until 12/21.

**Scott Diffrient** is one of the jewelry designers featured at Malouf on the Plaza (heir to Packard's, his former home).

**Deborah Madison's** recipes for sage, "the cold-weather herb," were featured in *The New Mexican* "Taste" section (11/13).

**Joette O'Connor Trofimuk** was one of many outraged readers protesting the removal of the "Anti-Fan" from *The New Mexican's* sports section.

## CHAIN GANG?

The brand new heavy orange chain, funded by the community to block off the Bosque by the old bridge from motorized vehicles, did not last long. It has been cut off and stolen. The GCA Board has issued a statement: "We have no more patience for disrespect and acts of vandalism. We intend to pursue this case, and when we discover the perpetrators we will file charges for their arrest...." A police report has been filed, photos taken, and a Sheriff's Deputy consulted. Local officers will be increasing their patrols in Galisteo.

If anyone has information about this crime, please contact Anna Cárdenas or Roger Taylor. If you see vehicles in the bosque by the bridge, or any suspicious behavior there, call 911 OR call 428-3720 (non-emergency office) and leave a message for Deputy McCartney. The case # is 0213018252.

## NEW RESIDENT: WALT STEVENS

Walt moved to SoGal this fall after almost fifty years of a checkered career (or careers) in New Mexico. Along the way he crossed paths with various Galisteans.

He grew up in northern Virginia, earning a BA in art and theatre at Berea College, working summers in the dining hall at a dude ranch near Lake George in upstate New York, where he would sneak out at night and ride ponies from the neighboring Polo Club, bareback and naked. In 1963 he played the dulcimer for English and Appalachian Folk Dances at the White House in Jackie Kennedy's Youth Concert series, where he met JFK. He also performed at the 1964 World's Fair in Flushing N.Y. and sang and danced on TV.

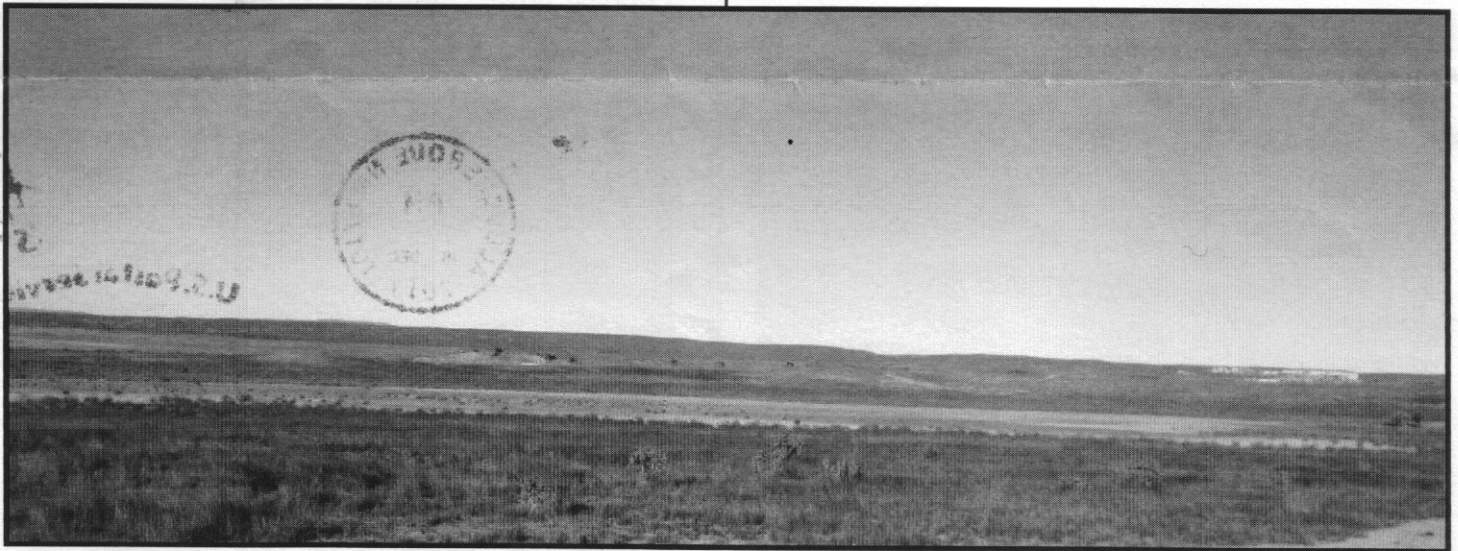
During graduate school at UNM (1965-67), where he earned an MA in Art History and Anthropology, Walt worked in Santa Fe for the NM Arts Commission's Cultural and Arts Survey -- visiting towns with population over 3,000, assessing arts resources throughout the state. After teaching art history briefly, he suffered memory loss in a 1968 car wreck and tried other things: teaching weaving and acting, teaching grade school for Navajo children in Lybrook, NM; working for the Dept. of Health and Social Services in Albuquerque, and in restaurants.

In January 1972 he moved to Santa Fe from San Francisco and worked for a Canyon Road framer where he met local artists, including Romona and Fritz Scholder and Liz Rose. Then he worked at the Three Cities of Spain Restaurant on Canyon Road -- a dinner theater, which got him back on stage. "I did a lot of theater for Theater Arts Corporation in the 70's and for Theater in The Red in the 80's, and acted in a few movies with Bette Davis, Gena Rowlands, Tom Berringer and Willian Katt." In the summer of 1979, he appeared in *The Threepenny Opera* as Mac The Knife to Janice Felty Griscom's Polly Peachum. He wrote, produced and directed *The Quiddity Exchange*, which was performed at The Armory for the Arts in 1989. "During this time I met and worked for Bruce Nauman -- most importantly as the clown in his video installation *Clown Torture*. From 1980 to 1990 I also worked for [PriscillaHoback's mother] Rosalea Murphy (an amazing woman), at the Pink Adobe, where I did everything from bus boy to host to assistant manager."

Walt lived off and on in Jamaica from 1988, where he oversaw rental properties and directed *Jakespeare* (at a local resort called Jake's in Treasure Beach) -- a production of *Pyramis and Thisbee* from Shakespeare's *A Midsummer's Night Dream*, in both English and Jamaican patois. ("It has been argued that *The Tempest* resulted from Shakespeare's brief stay in Jamaica. I doubt it, but there are many listings in Jamaican phone books for Shakespeare and a few guesthouses by that name.")

From 1991-93 Walt worked for the Santa Fe Opera's Press and Public Relations Department, then left for San Diego and traveled the country and Mexico in a small RV. After spending nearly five years in Truth or Consequences, helping to care for an old theater friend, he was ready to come to Galisteo at last.

"I first visited Galisteo in 1972 on my first forays into the country around Santa Fe and have been 'passing through' ever since with the thought of someday moving here." After two summers of house-sitting in SoGal (for your editor -- a fortuitous connection through mutual friends in Jamaica/New York), he ended up on La Otra Vanda, "with the help of wonderful friends here. At the age of 71, I consider this a reward. My heart has always been in northern New Mexico."



La Laguna de Galisteo, this year after the rains. Usually a dry playa, it came alive with cranes, ducks, avocets.... Birders came from far and wide. (Photo: Jan Saunders)

EL PUENTE is resurrecting the "Who We Are" series on new and old residents. If you would like to participate, send a brief account of your life before and in Galisteo, or a particular Galisteo experience, to [flip14@wildblue.net](mailto:flip14@wildblue.net).

## LETS HEAR IT FOR BOOKS!

Christine Mackenzie reports from the Frankfurt International Book Fair, where she introduced her new Sci-Fi novel, *Lisa Bennett Visits Utopia*. 7300 exhibitors and publishers from 100 countries were represented, and 276,000 visitors over five days enjoyed this literary feast. "I was amazed," she writes, "how many people still love the feel of paper and print... Thousands bought large numbers of heavily discounted books on the final day. ... I saw people on the subway carrying heavy bags filled with art books, kids' books, young adult novels, and whatever took their fancy." Books still make good Christmas gifts!

LAST CHANCE TO GET YOUR INFO in the 2014 Galisteo Phone Directory: [forbeslux@aol.com](mailto:forbeslux@aol.com) or 466-212.

**EL PUENTE SPONSOR:**  
**JANICE FELTY GRISCOM**  
and a contribution from Tom Morin

## GALISTEO CLASSIFIED

ADS ARE FREE, AND FOR GALISTEO RESIDENTS ONLY. CALL 466-1276 TO UPDATE OR DELETE YOUR ADS. Next deadline: Jan. 5.

### WANTED

**New Home for my very tall Ficus tree!** My tree is about 10' tall (or more) & has outgrown my ceiling. It may need re-potting... but I would love for it to go live in a new home with high ceilings & big windows & with folks who will love it like I have. It's free !! Call Evelyn, 466-1875.

### FOR RENT

**Adobe Home & sep. artist's studio in village;** fireplace, deck, 1 brm, yard, fruit trees: \$1000 mo. + util. Deposit & refs. required: Call 466-2255 or [priscillahoback@mac.com](mailto:priscillahoback@mac.com).

**Charming vacation Casita** in the heart of Galisteo, available for rent by the night, week or month. Steve or Jean 466-1544.

### FOR SALE

**Talus Wind Heritage Meats.** Local New Mexico lamb, beef and turkey available. Please contact Ryan, 505-982-7782 or [Ryan@taluswindranch.com](mailto:Ryan@taluswindranch.com), or <http://taluswindranch.com>.

### SERVICES

**Kundalini Yoga & Meditation:** Sundays and Tuesdays, 4-5:15, 5614B Highway 41. Ruby Renshaw, 466-1961.

**JVS will remove (live) rattlesnakes.** Call 466-1064.

**Maria's Personal Assistant Services:** Elder help, errands, office support, housesitting, packing/ shipping: 466-8930.

**We build and repair coyote fences; haul trash; yard work & other odd jobs.** Fair prices, local references, Michael J. Anaya, 660-2275.

**Dave's Auto Repair:** restoring, minor repairs, painting. Local refs. Free estimates: David Montoya, 466-2097.

**Pet and housesitting, watering plants, feeding animals, etc.** Call Linda Jones, 310-2904 or 466-3102.

**The Orchard: Full service catering, personal chef, and Care Network.** Corey McGillicuddy (aka Dragon Lady), 466-1831.

**Common sense, gentle dog-training:** house manners, management problem-solving at your home, and limited boarding. 20 yrs. experience. Call Evelyn, 466-1875.

**Galisteo Woodworks:** for your custom woodworking needs. Furniture and furniture repair. Antonio Chavez, 466-3601.

Call Adan Cárdenas for **Firewood, Misc. Hauling, Odd Jobs, Humane Custom Butchery, CAD services.** Phone 466-8967 or cell: 435-3067, [adan.cardenas1@gmail.com](mailto:adan.cardenas1@gmail.com).

**Barbara Holloway Fine Handweaving** scarves, shawls, vests, jackets, handwoven of luxurious chenille. 466-2118.

**Dream Interpretation:** Learn about the message from your Inner Self in your dreams. Veronique Cartier, 466-0803.

**Meditation and Knowings** class with Chris Griscom, Sundays at The Light Institute, 4:00-5:30 pm. Free to Galisteo residents. 466-1975.

**Carpentry:** Custom closets, hand-carved tables, benches, gates, etc.; also electrical work. Ted Montoya, 231-3671.

**Barbara King Pottery:** functional and decorative, handcrafted with a variety of glazes on white stoneware. 466-3219.

**Rocky Mountain Handyman.** Can do anything! Call Mark Lyons, 466-0100.

**MacTech Support and Tutoring,** photo digitizing and organizing, and Photoshop lessons: Tom Martinelli, 466-1020.

Beth is available for **petsitting in Galisteo**, 470-7606.

**White Dog Cyclery:** Your family's certified bicycle maintenance/ repair service. All bikes. Frank, 466-2121.

**Linda Vista Stables:** Beginner western riding for children and adults; 1-2 hr. trail rides; short-term boarding. 466-8930.

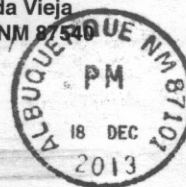
**Passive Solar Builders:** Locally owned general contractor since 1980. Quality home construction, renovations: 466-2118.

**Welding, flagstone, moss rock, fountains, plumbing, sprinkler, drip systems, plus Gopher Control.** David Maestas, cell 670-8608 or 660-9715.

## +++ EL PUENTE DE GALISTEO +++

Editor: Lucy R. Lippard. EL PUENTE logo: Cara Lee.  
Printer: Allegra. Comments, suggestions, contributions to EL PUENTE, 14 Avenida Vieja, 466-1276 or [flip14@wildblue.net](mailto:flip14@wildblue.net). NEXT DEADLINE: Jan. 5. TO SPONSOR: make out \$75 check to GCA "for newsletter."

El Puente de Galisteo  
14 Avenida Vieja  
Galisteo NM 87540



Wayne & Barbara King  
22 Avenida Vieja  
Galisteo, NM 87540