



**This was a month of meetings. If you were not able to attend, please be patient and read all these reports – tedious as they can be. Our future is being decided, and the better informed we are, the more we will be able to affect it.**

**CROWDED TOWN HALL MEETING ON ROADS**

On February 20<sup>th</sup>, an impressive turnout of some eighty people (plus kids and squabbling dogs) crammed the Community Center for the meeting on roads. There were twelve officials from County and State agencies on the stage and others in the audience, representing Land Use, Assessor, Planning, Water Resources, Sheriff’s Department, State and County Transportation. Among them were the Deputy County Attorney, County Public Works Director for Roads Robert Martinez, and County Manager Gerald Gonzales (who announced he had ancestors from Galisteo). County Commissioner Mike Anaya was the Master of Ceremonies.

This was the biggest community meeting we have had for years and many important issues were raised, so the following report is a long one.

Phil Gallegos from the State DOT was very informative about plans for NM 41, although they are currently in the data-collecting stages, a process that takes a year, and don’t know yet whether they will rehabilitate or replace the southern village bridge. He said both it and the one over the San Cristobal Arroyo were eligible for the Historic Register; they might be kept for pedestrians and paralleled by new bridges. The DOT is required by NEPA (National Environmental Protection Act) to develop projects with community involvement.

The right of way on NM41 is probably at least 100 feet (it only covers about fifty feet now). The bridges are structurally sound and safe to drive on for the time being, but they are old, and both concrete and steel are failing. “There is some stress on the beams, but not so severe that the bridges have to be posted,” said Gallegos. These two are now on the top of the County’s list as the worst in the district. There are **no plans to add extra lanes** from Lamy to Clark Hill, but the pavement is failing south of Galisteo and the **shoulders will probably be widened** from the village bridge to the southern edge of the Galisteo Basin,

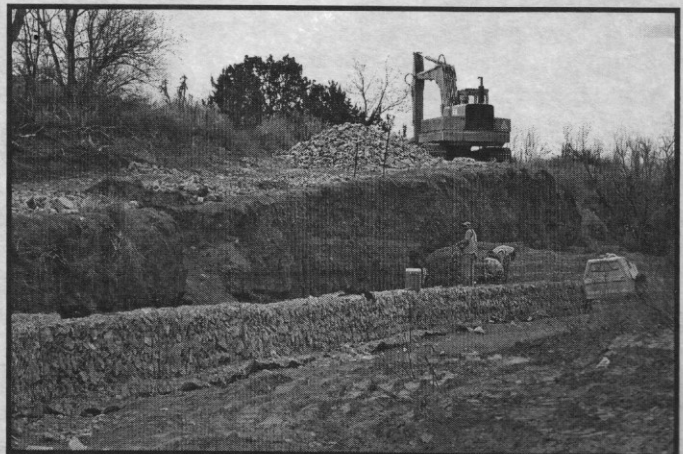
**VERY IMPORTANT  
FIRE NEWS  
SEE INSERT**



similar to the road to Moriarty. That would be two 12’ lanes with 8’ shoulders.

The new bridges will be designed according to Federal standards, so the load-bearing capacity will be increased. There were many questions about the necessity for huge **gas trucks** to use this road. Gallegos explained that the repair of the bridges is not to accommodate these trucks, but federally funded roads cannot be restricted to just passenger vehicles. Only County residential dirt roads can be restricted. The town of Madrid wanted to restrict the cement trucks passing through on NM14, but were also told it can’t be done.

No speed bumps are allowed on State highways (they wreck emergency vehicles), but our best hope is to get funding for traffic calming. Gallegos knows we want to keep the village’s rural nature intact, so there will be no sidewalks. They can narrow the roadway, funneling traffic through the village center. (The Planning Committee is considering ways to do this.) Residents requested that no-passing lines be consistent through the village and Gallegos agreed that was a good idea; speed limit signs might be extended further out. (Cont. p.2)



NM 41 gets a boost from gabions just north of town where the arroyo was threatening the road. (Photo: Richard Shuff)

A red light by the church seemed a bad idea because of the monstrous noise trucks make starting up again; a blinking yellow light might work. LED radar signs were also suggested. They only have six in the district, and Gallegos warned that people tend to slow down only for a while, then speed up again when they realize there is no enforcement. [A radar sign did appear at both ends of the village for one day soon after this meeting.] Residents asked that the Sheriff stiffen penalties for trucks "hauling ass through here," and proposed that we complain to the companies they work for. It was remarked that speeding was dangerous because the church still has processions and walks to the cemetery after funerals. There were many questions about accidents and HAZMAT (hazardous materials) planning. The two terrible accidents at the foot of Clark Hill were both due to speeding.

Robert Martinez answered questions about the paving of **County Road 42** (after noting that the County had done a nice job for us on rehabbing the old bridge). The work will probably start in September and continue for nine months. Some residents want CR42 paved and some don't, arguing that it ruins the rural character. Mike Anaya said he had been fighting for eight years to raise the money because it is one of the most dangerous roads in the County, plus it tears up vehicles. "Does it have to be paved?" Base course is too short-term and not maintenance-free. "Do we get to see the designs?" Yes, said Martinez-- at a public meeting. Fire Chief Jean Moya said we've had less wrecks since CR42 been partially paved and the wrecks are usually on the dirt sections. Some residents disputed that, citing high speeds on paved sections. The County hasn't figured out yet what to do about the **Los Angeles Arroyo crossing**, which is wicked in flash floods (should we ever see water again). It could be a "low-water crossing" or an actual bridge.

**Toxic dust** on dirt roads throughout the village was brought up, and "the fifteen-mile speed limit is a joke." It was noted that there wouldn't be dust if the speed limit were respected. Asked about speed bumps on dirt roads in Arizona, Martinez said they have to have pavement markings. He said he had offered a couple of solutions turned down by residents --one because it would hurt the vegetation..

Someone asked "How can we **protect our historic residential village**?" Anaya replied, "You want me to put up a gate? I'm not for keeping people out. If I'd wanted to keep people out of here, a lot of you wouldn't be here today!"

It was pointed out that the traditional village is a cultural resource severed by the road. Beth Mills observed that there are things we can do in terms of design that will make it look like a unique place to slow down for.

County Manager Gerald Gonzales said, "being a historic village is a blessing and a curse. Most of the growth is happening in the County, not the City. Traditional communities are being challenged, so this is the time to plan." We can set the mold for the next 20-30 years; otherwise we will be bypassed. "It is tricky to balance development and preservation." He noted that the Railrunner project will impact Galisteo if it goes to Lamy; Petroglyph Hill and the Cerrillos Hills Park will draw people. "We need the kind of growth and change people will be comfortable with. It will improve the economic stature of the Galisteo Basin." (This was greeted with a certain amount of disapproval: "We

don't share the desire for growth in this area.")

When asked about the long-range plans for local **water systems**, Gonzales replied that they want a competent system of water delivery throughout the County; wastewater is a valuable commodity in the arid Southwest. A geo-hydrology study of the central County done recently included portions of the Galisteo Basin. The spokesman from County Water Resources said that they wanted to get rid of redundancy and the County should be a backup to local water systems. They are looking at regional conservation, storage and re-use. A former member of the Ranchitos water board said they conserved by metering; why doesn't the village follow suit?

At the end of the meeting, the following contact numbers were announced: **City Manager's Office: 986-6200; Jennifer Jaramillo, Mike Anaya's assistant: 986-6293; Brian Baca, of the County Assessor's office: 986-6208.**

## FREDDIE CÁRDENAS

### NEW GCA BOARD PRESIDENT

On March 2, the Galisteo Community Association's Annual Meeting was held at the Community Center to elect new officers and board members. An innovation was the pre-meeting reception with wine and cheese, which may have helped people get in the mood to volunteer... But there was barely a quorum of thirty attendees. That's too bad. The GCA works hard for us and we owe them our presence at the *one* regular meeting per year.

Outgoing President Tom Morin thanked the "great board" he'd worked with for his two-year term: Linda Braun, Anna Cárdenas, Ted Fleming, Frank Hirsch, and Richard Shuff (as well as Beth Foote, who was still in Laos). He went over the last year's activities, which included the new mailboxes, still to be landscaped, and bulletin board; disabilities access to the Community Center, and repairing the vandalism. He thanked Bébé Givaudan for being a key figure in getting the new speed limits, Richard Shuff for the community cleanup, and County Commissioner Mike Anaya for his "tremendous support." The Board has been supportive to the Planning Committee and runs the August Chili Challenge. The GCA also pays for EL PUENTE's new mailing expenses and paper.

Morin also announced that thanks to the GCA Board, State Rep Rhonda King, Charlie Holloway, Rob Civitello, Freddie Cárdenas, and others, the **playground at the Community Center** is listed for \$80,000 from the legislature -- *if* Gov. Richardson signs on. It will be upgraded and made a more welcoming place for children and families, perhaps with a *ramada* and other amenities.

Morin acknowledged that many of us want more community-wide social events, but the Board had been too depleted by bigger issues, such as the **Quiet Title cases**.

The Gafford case is moving slowly along, with one or two more depositions to be made before anything is decided. As it creeps, expenses climb. Richard Griscom appealed for financial support for the **Legal Defense Fund** which covers lawyer's costs for those unable to deal with the hefty expense of protecting our community lands (a little over half of the 29 defendants). The bill is now close to \$7,000; \$5000 has been paid. Pierce Clayton, Morgan Gafford's realtor/accomplice, has now claimed for

# HIGH FIRE DANGER

## NO BURNING ALLOWED OF ANY KIND WHATSOEVER

SANTA FE COUNTY RESOLUTION NO. 2006-35 PROHIBITS:



**CAMPFIRES.**



**OPEN FIRES OF ANY KIND.**



**OPEN BURNING OF VEGETATION OR RUBBISH.**



**USE OF AERIAL AND GROUND AUDIBLE FIREWORKS, INCLUDING AERIAL SPINNERS, HELICOPTERS, MINES, MISSILE-TYPE ROCKETS, ROMAN CANDLES, SHELLS, STICK-TYPE ROCKETS, CHASERS, AND FIRECRACKERS.**



**SMOKING WITHIN A COUNTY PARK, CAMPGROUND, OR ANY WILDLAND AREA EXCEPT WITHIN A CLOSED VEHICLE OR BUILDING.**



**LITTERING ON PUBLIC ROADWAYS/AREAS WITH IGNITED SMOKING MATERIALS.**



**UNAUTHORIZED USE OF OFF-ROAD VEHICLES, MOTOR BIKES AND CHAIN SAWS WITHIN COUNTY PARKS, CAMPGROUNDS AND WILDLAND AREAS.**



**THE ISSUANCE OF LICENSES OR PERMITS FOR OPEN BURNING.**

---

**More than four out of every five forest fires are started by PEOPLE.**

**There has been one brush fire every day in Santa Fe County in the last month.**

**The moisture content in Ponderosas is extremely low and the bark beetles are gathering for the kill.**

**Create a safety zone around your house to separate it from combustible plants and vegetation.  
Install Smoke Detectors in your home.**

**Be careful everywhere, and keep an especially close eye on the Bosque.**

### *Happenings and Events*

Through March 31st

**March Madness Bar Special!**  
Stop into our cozy Tapas & Wine Bar  
Buy One Beer, Cocktail, or Glass of Wine  
Get the 2nd one for HALF PRICE !

Thursday March 16th

### **Tastes of Italia**



A Very Special Evening Celebrating  
the Vast Regional Flavors and  
Finest Wines of Italy  
Pre-fix Italian Dinner with Wine Pairing  
6:00pm Cocktails, 7:00pm Dinner  
\$65. pp (+tax & gratuity)

Thursday March 30th

### **Flamenco Fiesta!**



A funfilled evening dedicated to celebrating our Spanish Ancestors  
Authentic Spanish Cuisine, Fantastic Spanish Wines  
Flamenco Dancer "Alma Flamenco!"  
Come Join the Party!  
Pre-fix Spanish Dinner and Flamenco  
6:00pm Cocktails, 7:00pm Dinner  
\$75. pp (+tax & gratuity)

Thursday April 13th

### **El Son Cubano**



Join us with Special Guest Cuban Chef  
Carmen Rodriguez  
(of Pranzo)  
with Classic Cuban Rhythms  
and a Festival Cubano  
A passionate evening of great food & music  
6:00pm Cocktails, 7:00pm Dinner  
(Call for menu info.)

Friday May 5th

### **Cinco de Mayo Fiesta!**



Margaritas, Tequila Cocktails, Mexican Beer, Authentic ala carte menu  
from South of the Border and Mexican Music.  
6:00pm Cocktails, 7:00pm Dinner

Call for Reservations - 466-8200

himself lands along the Bosque south of the old bridge, as well as the triangle of land at the intersection of Avenida Vieja and NM41. Hopefully these two cases will be conflated so that we don't face double fees.

In the short run we may be able to recoup the cost of the depositions (around \$1000 each), but to recover all of our court costs we will have to sue. Griscom emphasized that the community's lawyer – Patrick Whelan -- is not gouging us; he is doing the work "modestly but thoroughly." Gafford and Clayton have yet to produce a deed, but won't give up. Morin, Griscom, and Antonio Chavez are organizing the defense and keeping track of the case.

Outgoing Treasurer Frank Hirsch reported on **finances**. The good news is that the GCA is solvent. The annual budget is about \$6000 per year and \$6200 was received from 51 contributors. The bad news is that very little money is made off rentals of the Community Center (\$50 for locals and churchgoers) and the roof needs major repairs, the bathrooms need upgrading ("and then there's the casino we're going to build...").

Finally, the **elections**, which went quickly with only one paper ballot necessary. **Freddie Cárdenas** and **Kathleen Murphy** were nominated for President and Freddie came out the winner.

Our new *Presidente* gave a synopsis of his career as a gymnast (who knew!), teacher and school principal. He now works for the Bureau of Indian Affairs, teaching at Jemez Pueblo. Freddie is on the Water Board and was instrumental in acquiring \$150,000 in State funds for the Galisteo water system on the west side of the Creek. He and Anna Montoya Cárdenas have raised three children here.

Kathleen remains Vice President. New Treasurer by noisy acclamation was the "overqualified" **Corinne Anaya**, who is a professional banker. **Linda Braun** remains Secretary. Morin, Hirsch, and Foote retired from the Board with their terms completed, to be replaced by **Maria Ortiz y Pino**, **Rob Civitello**, and **Barbara King** as Alternate. **Richard Shuff** and **Anna Cárdenas** continue on the Board.

And with that, the meeting – livelier than usual (the cheese effect) -- came to a close. Yet another new era begins for the Galisteo Community Association.

## COMMUNITY PLAN GETS GO AHEAD

On February 27<sup>th</sup>, the Community Planning Steering Committee met to prepare for the next morning's meeting with the Board of County Commissioners. It was noted that the map of boundaries had already been turned in to the BCC and any changes from now on will have to be explained to them. County Planner Beth Mills wished for full representation of the committee at each meeting in the interest of consistency. She also warned us that the "reactive mode" (protecting oneself and one's property, freezing the village in time) is not productive for the planning process; it's all about the status quo or going backwards instead of looking at the future: "If reaction takes over, we're sunk. If you don't know where you're going, you might end up somewhere else."

Then she asked us to consider what trends are driving Galisteo today. Among the answers: there's not much for young

people here, and there are few kids; incoming people are now older and wealthier; no affordable housing; pending water shortages; we are increasingly more accessible, less isolated; growth is coming at us; the movie industry; traffic is increasing (CR 42 is the only major East-West artery in the area) and finally, the "Galisteo mystique."

It was noted that the church may still be the solidest institution in town. Many parishioners have roots in Galisteo even if they don't live here, and they come to church from Moriarty, Stanley, Santa Fe, and Eldorado.

The real driving force is the desire for community.

Mills' next question was "What is the Probable Scenario?" The answers were eloquent -- pure doom and gloom. We need to protect our North and South buffer zones. We could be facing a large two-lane highway and still more speeders. Saddleback Ranch could become a gated community; there could be a gas station and convenience store, more lights at night, running out of water... in short, the Eldoradoization of Galisteo.

At the next meeting we will consider the other side of the coin: our visions for Galisteo, what the village could be like in 2025. The discussion will be based on shared values as a way to find a common ground, since the committee is not necessarily all on the same page.

The next morning several committee members appeared in front of the BCC at the County Courthouse. Freddie Cárdenas presented the plan and the Commissioners asked a few questions. They reminded us that they were considering a regional water plan and we should take that into consideration as we planned. They wondered why Vista Clara, which seems so environmentally-oriented and community-friendly, did not want to participate in the planning district. Mike Anaya recommended that everyone on the committee be a property owner.

We were then officially approved to go ahead with the Community Plan. Hold onto your hats!

**The first edition of Jan Saunders' BIRD NOTES FROM THE GALISTEO BASIN sold out. EL PUENTE PRESS has now reprinted it. Call 466-6620 to order copies at \$6 each. Proceeds go to Galisteo Volunteer Fire and Rescue.**

*Apologies to Jan Saunders for the February omission of the last paragraph of "Beaks," which follows:*

The Curve-billed Thrasher's sharply pointed decurved bill is perfect for searching for grubs and insects in leaf litter and bark. Raptors and Vultures have strong hooked beaks for tearing into prey and ripping open carrion. Ogden Nash immortalized the Pelican's beak that "can hold more than his belly can." I've never seen a Pelican in Galisteo but the White Pelican along with his amazing beak is a frequent visitor to the Bosque del Apache National Wildlife Reserve south of Socorro. When a Pelican dives into the water, the pouch beneath his beak expands to take in water and bring his catch to the surface.

*"Feets" will appear in March.*

## CAN GALISTEO FEED ITSELF?

Denise Lynch

Twenty-two enthusiastic gardeners of all types and inclinations met with Deborah Madison and Priscilla Hoback at her studio on March 4<sup>th</sup>. The discussion included issues about soil, water, wind, varieties of tomatoes, kale, squash, herbs, fruits and flowers that will grow well in Galisteo.

There were questions and answers in an informal setting. Seeds were shared and catalogues made available. This inclusive group welcomes people to continually participate and share, as one long-term goal is to answer the question "can Galisteo feed itself?"

A community table will be set up at Hoback's studio on Via La Puente for seed exchange. This support group will be ongoing through Spring, Summer, and Harvest. A market could follow!

**DON'T MISS: Patrick McFarlin's painting show** at Dwight Hackett Projects (2879 All Trades Rd.) and Mezzo Soprano Janice Felty singing Music from the Palaces of Europe at Loretto Chapel, April 13-14, 8PM (Santa Fe Pro Musica).

## EL PUENTE SPONSOR: KRISTEN SIEMON & SAM MEDFORD

### GALISTEO CLASSIFIED

ADS ARE FREE, AND FOR GALISTEO RESIDENTS ONLY. Contact: 14 Avenida Vieja or call 466-1276 by April 5th for next issue. PLEASE CALL TO CONTINUE ADS.  
FREE

Horse manure from Linda Vista Stables. Call Maria, 466-8930.  
FOR RENT

Beautiful furnished space in Galisteo, 2200 sq ft, 1BR,3B, 3 fireplaces, Rebecca Fitzgerald 466-4957.

Guesthouse in Galisteo, 1 BR, 1B, in enclosed compound; \$750 mo. + utilities. Call 983-2652.

Historic home in heart of old village, 2 BR, 1B, \$1300 mo. 466-2111.

### FOR SALE

Kembucha—culture and method for making traditional Asian fermented tea. Tara, 466-2111. (For sale or trade.)

Anatolians: Turkish livestock guardian dogs. \$1000 + up, dep. on level of training. Tim, 577-6162; Wendy, 610-8326.

### SERVICES

Factotum: Can I help with something? Tara, 466-2111.

One Room at a Time, Organize, Clear Clutter. Redecorate, Archive Memorabilia. Call Pamela Markoya, 466-9191.

WANT SOUP? Take home a quart of fresh or frozen home-made soup (vegan and not) w. warm garlic bread. Tues.+ Sun. nights: \$13.50 for two. Call ahead: Rebecca, 466-4957.

Barbara Holloway Fine Handweaving scarves, shawls, vests, jackets, handwoven of luxurious chenille. 466-2118.

Like things done right? Welding, flagstone, moss rock, fountains, plumbing, sprinkler, and drip systems plus Gopher Control. David Maestas, cell 670-8608 or 660-9715.

Photo & Design. www.richardshuff.com; 466-7723.

Tree Cutting & Trimming Service, Fence Building, Odd Jobs; E-Bay too! Call Mark, 466-1267.

Call Beth for housesitting/petcare/vet runs/odd jobs/studio assistance/party help/you name it... in Galisteo, 470-7606.

Galisteo Caretaking Services. Richard, 466-7723.

Baby-sitting, petsitting and animal care, Mercedes, 466-7285.

Need a permit? Computer Aided Drafting Support: for architects., Engineers, Contractors and Homeowners. 4 yrs. experience/local references. Call Adan Cárdenas, 466-8967.

Dave's Auto Repair: tune-ups, oil change, restoring, minor repairs, restoring, painting. Local refs. Free estimates: David Montoya, 466-2097.

SB Lejo/Sina Brush is taking special orders for antique Mexican furniture. Call 577-4045.

Galisteo Woodworks: for your custom woodworking needs. Furniture and furniture repair. Antonio Chavez, 466-3601.

Electrical Concepts: Residential/Commercial/Industrial. Hansi Mohn and Michael Anaya, 988-8853.

Native Bloom, Landscape design/maintenance. Linda, 466-4658.

Restore your old photo: We copy, repair, and reprint your favorite damaged or fading photos. Richard/Cara, 466-7723.

Linda Vista Stables: Beginner western riding for children and adults; 1-2 hr. trail rides; short-term boarding. 466-8930.

Carpentry: Custom closets, hand-carved tables, benches, gates, doors, 35 yrs. experience, local refs. Onesimo, 466-1430.

Common sense, gentle dog-training: house manners, management problem-solving at your home; also limited boarding. Twenty years experience. Call Evelyn, 466-1875.

Acupuncture, herbal medicine, feng shui, nutritional counseling, massage. Dr. Connie Fisher, 470-9314.

Passive Solar Builders: Locally owned general contractor since 1980. Quality home construction, renovations: 466-2118.

Private Exercise Training and Power Circuit Classes with Ron Helman. Call 466-1919.

"First Saturday" monthly all-day workshop at Light Institute; lunch at Inn. 466-1975 or 466-1458.

Nick's Landscaping, Brush Removal, and Garbage Collection. Call 466-0530 or 470-5973.

### +++ EL PUENTE DE GALISTEO+++

Editor: Lucy R. Lippard. Contributing Editors: Linda Braun, Isabella Gonzales, Richard Griscom, Jan Saunders. Distribution, Production, Photographer: Richard Shuff. EL PUENTE logo by Cara Lee. Printer: Allegra. Send letters, comments, suggestions, contributions to EL PUENTE, 14 Avenida Vieja, 466-1276. NEXT DEADLINE: APRIL 5. TO BE A SPONSOR: make out check for \$75 to GCA, noting "for newsletter;" and send to address above.

El Puente de Galisteo  
14 Avenida Vieja  
Galisteo NM 87540



King, Wayne & Barbara  
22 Avenida Vieja  
Galisteo, NM 87540