

# EL PUENTE DE GALISTEO

ISSUE #66

SUMMER 2003

## \* SUMMER CALENDAR \*

**JUNE 23rd: 6:30PM** at the Community Center: **COMMUNITY MEETING WITH THE SANTA FE COUNTY PROJECTS AND FACILITIES DEPARTMENT** regarding the Infrastructure Capitol Improvement Plan (ICIP). The County is asking for input from residents about what items we would like added to the list sent to the legislature for funding. County Commissioner Mike Anaya will be present. Please plan to attend this important meeting and come with ideas!

**JULY 19-20: RODEO DE GALISTEO.** Parade through village on Saturday morning before events begin at the Rodeo Grounds.

**AUGUST 23 6PM** at the Community Center: **GALISTEO'S FIRST ANNUAL CHILI FESTIVAL.** Prizes for best Chili, Cornbread, and Margaritas; music, arts and crafts, fun for the family and dinner too! Sign up now for competitions and arts/crafts: Victoria Prewitt, 466-6359 or Mela Montoya, 466-1430. Sponsored by the GCA.

**JULY 6, AUGUST 3, SEPT. 7: BOOK/VIDEO SWAPS** 2-4PM, Community Center. Community survey will be on display.

**NEXT ISSUE OF EL PUENTE, MID-SEPTEMBER**

**\*HAVE A GREAT SUMMER\***

## CRITTER CORNER

A new column by Isabella Gonzales  
(and anyone else who steps up)

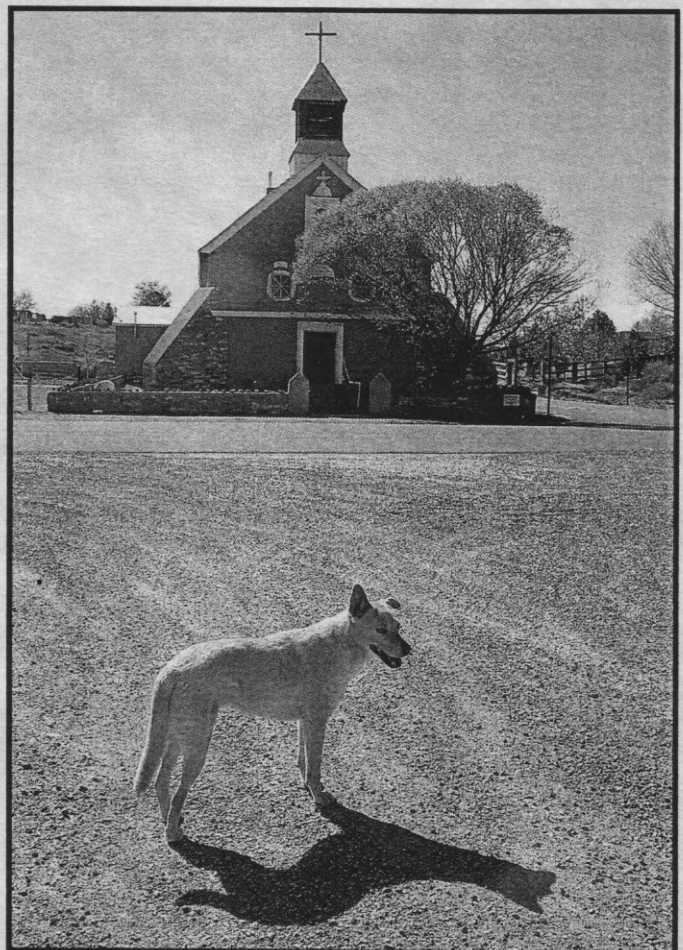
**VITAL STATISTICS:** Full name: Desdemona; Nickname: Mona; Species: Canine; Age: 11; Astrological Sign: Pisces; Breed: Classic New Mexican Mutt; Hobbies: Chasing rabbits, chasing rabbits, and chasing rabbits. People: Linda Rice and Grace; Long Term Love Interest: Boris (his person is Nancy Helle); Favorite Toy: Prefers not to play with "dog toys" because of the stigma attached.

Mona considers her greatest adventure as the time she was running errands with Linda in Santa Fe and got lost. Mona tells us, "Linda ran in to get a cup of Joe and suddenly I felt as if I left my body. I watched myself jump out of the truck window toward a bright light in the shape of a bunny. I still can't explain what happened."

An hour later (at her next job) Linda noticed that Mona was missing (hey, she was really busy and she hadn't (cont. p.2)

## INSIDE: SPECIAL SUPPLEMENT ON RESULTS OF COMMUNITY SURVEY

**NOTICE: GALISTEO STUDIO TOUR IS ACTIVELY RECRUITING A FOOD VENDOR ON THE WEST SIDE OF TOWN.** Call Victoria Prewitt, 466-6359.



Mona Comes Home (Photo: Richard Shuff)

eaten). A wild search followed at the coffee place, where folks mentioned that Mona had paced for a while and then left. Linda spent the rest of the afternoon searching Santa Fe and became a familiar presence at the animal shelter – dropping by some three times a day during the following week. Mona tells us, “It wasn’t until I saw my face on a Lost Dog flyer that I realized I was missing. I always figure, wherever you go – there you are!”

Eight nights later, Linda was jolted out of some serious REM by sounds on the front porch. She says she “almost ripped the door handle off” getting it open. There sat Mona with smiling muzzle and sore pads – a little skinny but otherwise unharmed. Mona says that her 25 miles plus trek through strange neighborhoods and across highways without food, water, or a compass “was really nothing,” but is reported to have a sign over her bed that says “Lassie Can Bite Me.”

Mona’s official title at Linda’s and Grace’s is “Guardian Angel.” She is thanked every day for coming home.

*If you would like your pet to appear in “Crittter Corner,” submit your article to El PUENTE or call Isabella at 466-2218.*

## LETTERS TO THE EDITOR

In reading some of the questions on the recent community survey it would seem that there is some confusion concerning the use of our community center. It has always been the policy of the community association board to make the center available for use to as many residents as possible. For obvious reasons, the building cannot be left unlocked, but it is a very simple procedure to obtain access. There is no charge for any event that is open to the entire community and is advertised as such. Anyone wishing to use the center is asked to reserve the date and time with Mela Montoya. They are asked to sign a form of responsibility and give a deposit which is returned in full so long as there is no damage and the center is left clean. They pick up and return the keys to Mela.

If the use is for a private party or group, the charge is \$50 for any resident of Galisteo. The rental charge for a non-resident is \$100. The Galisteo Community Association, as custodians of the building, are happy to have it used and enjoyed as much and as often as possible. Thank you for allowing me to clear up any concerns about the community center not being available for use. If anyone has any questions, please feel free to call me!

–**Joette Trofimuk, President, GCA**  
\*

I applaud the efforts of the Galisteo Watershed Coalition and wish more of us could have attended its May 1 meeting.

I also commend your summary of the meeting, but wish you’d explain how “adding or moving” water rights can increase water supply. – **Joe Cooper**

**Editor replies:** Neat trick, huh? Clearly no more water is going to spring from the rock by purchasing or trading water rights. Although local supplies can be augmented on paper and in the field by these strategies, the amount of water under there does indeed stay the same.

Some other corrections to my attempt to summarize some very complicated issues last month: “evapotranspiration” is a fancy word but not for what I said it was; it is in fact a combination of water loss through plants and evaporation through soil and open

waters. Also Golden is obviously not in the Galisteo watershed, except for administrative purposes. And the population growth noted was specific to the South Galisteo Sub-Basin; for the entire watershed, now 17,000, the projection is 65,000 by 2060. **The next meeting of the Galisteo Watershed Coalition is July 10<sup>th</sup> at the Eldorado Fire Station, 7PM.** (More on water, p.5.)

## PEDACITOS/BITS AND PIECES

Two of **MaryAlice Anaya’s** granddaughters graduated from high school this month: **Paloma Anaya** from Santa Fe High and **Renee Anaya** from St. Michael’s. Congratulations.

**Frank and Cindy Lux** have begun the Santa Fe Artists’ Market on the edge of the Farmer’s Market in Santa Fe, every Saturday, all summer, 8-noon. There are different artists every week. Call Cindy (466-2121) if you want to exhibit.

**Our poor old bridge** is under siege. First it was “repaired” by the County, which replaced some boards on the east side. A few days later the bolts had been shaken loose by traffic and you could pull them out by hand. Then a car ran into the wire railing and almost fell into the creek. Then a cement truck drove over the bridge and broke the new east-side boards. It was “fixed” again. Now every time someone drives across, there is a thundering roar that can be heard all over the village. This is a historic bridge and deserves better care.

The horses that were stabled for a few months northeast of the old bridge have vanished, but the **collapsed barn**, blown over by the wind, remains as an eyesore. Was this structure legal?

**Steve Moya and Greg O’Byrne** rode the 100 miles of the Santa Fe Century Bike Race in May. It began in Santa Fe, went out Rte. 14 to Cerrillos, Madrid and Golden, then up Heart Break Hill on Rte. 344 to Cedar Grove, across Rte. 472 to Stanley, up Rte. 41 to Galisteo, and 285/I-25 to Lamy, Eldorado and back to Santa Fe. Whew.

**Britt Lee** was asked by *The New Mexican* what she would most like to do. “I would go skydiving,” she said. I wish I were a raven; I just watch the ravens all the time and wish I could be up there playing among the clouds like they do.”

## FIRE DEPARTMENT NEWS

The Fire Station, like all the rest of us, has been given a “proper” address: **39 Avenida Vieja**. Please make note for your contributions or the Post Office will send them back!

• **Mylie Ortega** is a new member of the GVFR. She and her husband Joe and their son live next to Socorro and Nick in the other little Anaya house. Welcome!

Restrictions have been lifted on our forest district but we are still in for a bad wildland fire season. **SO BE CAREFUL!**

**Socorro Contreras and Miguel Padilla** were out with the medical unit during the Century Bike Race. Miguel (who is at the Community College, not UNM as wrongly reported last issue) also earned his Wildland certificate.

Galisteo was the only County fire department to complete its five-year plan.

\* \* \* \* \*

## COMMUNITY SURVEY

**54% of Galisteo's households replied to the Community survey in preparation for the Traditional Community Land Use Plan. This level of response is off the charts. 10-15% would have been good, and in large communities they only expect a 5% return. Thanks for a great start!**

The questionnaire in everyone's mailboxes with return stamped envelopes was designed by a planning class at the University of New Mexico: Javier Benavidez, Marcelle Francke, Marice Ikle, Betty King, and Adriana Trujillo, under the direction of professor David Henkel.

Here's how it worked: the survey was written by the UNM class after several meetings with Galisteños, then it was shown to the Galisteo Traditional Community Plan Steering Committee for suggestions, then it was revised, copied, and sent to you. (Thanks to the GCA for covering this expense.) You replied anonymously and sent it back to UNM. *Only the students saw the original replies.*

Finally the class presented the results (in Power Point) to their peers at UNM and then to our steering committee here in Galisteo. They also produced a lengthy report based on the survey with graphics, charts, and graphs. This functions solely as a student exercise in community planning. It is unrelated to our eventual plan but will serve as a useful tool and guide as we work. Because some returns came late, after the May 5<sup>th</sup> deadline, there are two slightly different groups of results; one is the original 44% and the later one is the 54%, which is summarized below.

**THIS IS JUST A SUMMARY**, so if you want full details, the original statistics are available from **any member of the steering committee and may be copied. A copy will also be on display at the Book Swap on July 6<sup>th</sup>. QUESTIONS, INPUT, AND DISCUSSION ARE WELCOMED.**

\*\*\*\*\*

140 surveys went out; 76 responses came in, representing 54% of the households in Galisteo. 59% are from the village; 17% from Ranchitos; 9% from between the village and Rte. 285; 8% from between Ranchitos and the Railroad tracks.

75% of the respondents approved of **adopting a community plan**. (One was opposed; 10 were not sure and 13 needed more information.) 55% were willing to participate in developing the plan.

The **four things most liked** about Galisteo were: small village (85%); open space (85%); rural character (73%); culture and history (55%). The **four things least liked** were "litter/trash/junk" (48%); inadequate community water system (27%); lack of affordable housing (22%), and lack of access to the community center (18%). (Another 9% listed "lack of community meeting place.")

*(As you can see from the figures the "other" categories, one or two people each, were many too many to list here.)*

**On defining the community boundaries:**  
*North:* Highway 285 (52%); Vista Clara (30%); hogback (12%). *South:* Rodeo Grounds (48%); Clark Hill (24%); Frank Anaya Ranch Rd. (22%). *East:* San Cristobal fence (51%); San Cristobal to 285 (47%) (plus one "to San Cristobal's western boundary," by which they probably meant 285, and not Rowe Mesa?). *West:* Railroad tracks (77%); Village Cemetery (15%); (with one vote each for Ranchitos' eastern boundary, a mile west of RR track; paved road on 42, and the San Marcos dump).

Where we get our **water:** community water association (50%); private well (41% plus 2 under "other"); only four people said they used the Ranchitos water association, so perhaps some checked off "community water association" generally?) Two of us haul water. 28% said they would like to hook up to a community water system and 46% did

not want to, while others weren't sure. 51% said they had water rights and 49% said they didn't. 19% of those who have water rights are agricultural.

Concerns about the **Galisteo River**: drought (27%); water quality and erosion (20% each); trails and motorized access (18%). 93% were concerned about the effect of future development on the water table (2% were not). 85% worried about development degrading water quality (2% did not). 72% thought a community plan should provide rules and regulations for the creek's protection; 3% didn't; 7% weren't sure; 17% needed more information.

The four **infrastructural elements** most wanted or needing improvement: waste collection (44%); water and cable and/or internet (both 33%); public safety (28%); sewer/waste water (24%); roads (20%).

Four concerns about **traffic**: speeds (78%); increase in traffic from outlying developments (67%); truck traffic (62%). Far below came signs (20%) and road conditions (16%), and there were a large number of "other" on this one. 62% were satisfied with **existing road and highway conditions** within Galisteo and 30% were not.

76% said there were **historical and archaeological sites** that should be preserved (but we weren't given a list of what they were).

**Concerns about growth and developments in progress**: 73% were concerned about commercial development in and around the village; 59% each about Thornton Ranch and the completion of paving on County Road 42; 50% about Hacienda Tranquilas and 47% about the King Cattle Co.

**Types of growth** we would like to see in Galisteo? "Slow growth" (55%); no growth

(38%); agricultural growth (18%); increased residential density in village core (9%). 77% thought we should adopt regulations to manage growth; 1% did not; 22% weren't sure or needed more information.

**The second part of the questionnaire dealt with who we are.** 23% of the respondents **have lived in Galisteo** from 0-3 years and another 23% from 4-9 years; 30% from 10-20 years; 10% from 21-30 years and 14% more than 30 years. 87% are first **generation** here; 1% grandparents and great grandparents; 8% great great grandparents, 1% great great great grandparents. 90% **own** their homes; 10% **rent**. 96% of homeowners have a primary residence here; 4% secondary. 22% own less than an acre; 41% own 1-5 acres; 14% own 6-10 acres; 24% own more than 10 acres.

65% **work** inside the town limits. 35% do not. 25% participate in the community through the Studio Tour; 21% through the Galisteo Community Association [not clear if this is board members or meeting-goers]; 14% through the Fire Department; 12% through the Water Board; 11% through the Church.

\*\*\*\*\*  
Also included in the students' report are some interesting figures from the 2000 census: Our population was 265, with the majority aged 40-69. 35% are Hispanic/Latino; 65% are not. All of the Hispanos lived in Galisteo in 1995, but only 53% of the non-Hispanos were here then. We worked in management, professional, sales and construction-related occupations. Our *median* household income was \$45,324. 21% worked at home. Commute time ranged from 10 minutes to 89 minutes.

---

### +++ EL PUENTE DE GALISTEO+++

**Editor:** Lucy R. Lippard. **Contributing Editors:** Anna Cárdenas, Kathleen Murphy, Jan Saunders, Barbara Cooper. **Production:** Insty-Prints, Santa Fe. **Photographer:** Richard Shuff. **EL PUENTE** logo by Cara Lee. **Please send letters, comments, suggestions, contributions to EL PUENTE, 14 Avenida Vieja, 466-1276. NEXT DEADLINE: SEPT. 5.**

## SONG OF THE SOUTH

Jan Saunders

The Northern Mockingbird, traditionally associated with magnolias, moss-draped live oak trees and soft summer moonlit nights in the southeastern United States, is also very much at home in the cholla cactus and juniper of the Galisteo Basin.

This handsome gray and white bird, the size of a robin, but slimmer, is easy to identify by the conspicuous white patches on the wings that are deliberately flashed in courtship and territory displays. When feeding, they walk along the ground raising their wings like archangels displaying the white patches to scare up insects.

Have trouble identifying birdcalls and songs? This one is a no-brainer. If you think you hear a mockingbird, listen for a regimented song that is repeated from two to six times. A master mimic, the male enjoys singing loudly both day and night during nesting season. Midnight to 4 AM seems to be a favorite! Capable of mimicking over 36 different bird species, car alarms, cats, squeaking gates and human whistles, the Northern Mockingbird aggressively defends his/her nest against all comers. I have observed several individuals (we seem to have at least 3 nesting pairs in Ranchitos) successfully defending their nests against cats and coyotes. They will not hesitate to peck pesky human intruders on top of the head. In the fall, the birds will leave these breeding grounds to migrate south for the winter.

**NOTICE: A committee of concerned citizens opposed to the cluster development planned for the Thornton Ranch 2 miles west of the railroad tracks on County Road 42 is being formed. This committee plans to take an active part in informing the community and in opposing a plan which will destroy the rural and historic nature of Galisteo. Anyone wishing to participate is welcome. Please call Muriel Fariello, 466-4763.**

### GCA BOARD MEETINGS MARCH/MAY

Citing lack of issues, the elected Board of the Galisteo Community Association has decided to meet only four times a year. Remaining 2003 dates were set for Sept. 24 and Dec. 10.

"After a brief discussion of terrorist insurance, it was unanimously voted that we do not need this."

On April 2, Ted Harrison of the Trust for Public Land came to speak to the GCA Board about the Thornton Ranch project. He met with a special committee appointed by President Joette Trofimuk, at whose home the meeting took place. Attending were: Joette and Nick Trofimuk, Barbara and Joe Cooper, Frank Hirsch, Wayne Aarniokoski, Joanna Kaufman, Muriel Fariello and Barbara Seiler.

The Committee's major concern is with "enormously increased traffic through the center of the village with attendant safety issues as well as its threat to the church and other historic structures." The committee asked Harrison to address another public meeting in Galisteo. [He first presented the plan at a public meeting at the Community Center November 14, 2002; see report in EL PUENTE #60. County Commissioner Mike Anaya and County Planner Jack Kolkmeyer were both present at that meeting].

The GCA paid for the Community Survey questionnaire to be copied and sent to UNM. Since the Board "had no advance warning of this expense," a motion was passed that any expense more than \$50 must be approved by the Board before the bill is presented. The Board also voted to pay its share of \$60 for the wood-chipping in the Bosque, along with the Water Board and the Fire Department.

Spring Cleanup was organized by Richard Shuff and took place on June 7. Enjoy your clean byroads before litter strikes again!

*(Quotations are from the minutes provided by Secretary Barbara Cooper.)*

## THORNTON RANCH PROJECT: UPDATE ON WATER

Lucy R. Lippard\*

At last November's community meeting in Galisteo on the Thornton Ranch Project (TRP) for a combined village development and open space 2 ½ miles west of Galisteo, Ted Harrison promised to report back to us on the water situation on the proposed property. Harrison initiated this project with the Trust for Public Land (TPL) but in the fall he and the TRP will move over to the Commonweal Conservancy, another national group better equipped to deal with conservation development.

TPL commissioned a report on water opportunities and restraints in the Thornton area from John Schomaker & Associates in Albuquerque, who often work with the State Engineer. The Galisteo Basin offers a far less "dynamic" system than Santa Fe or Albuquerque, with a much lower rate of long-term replenishment. The hydraulic conductivity in the Galisteo Basin is 0.1 to 0.4' (it's 8' in Albuquerque!) with acceptable salinity and organic dissolved solids, which may require treatment.

Even the Basin's best source is generally considered a poor aquifer, but it can be productive. A well just drilled for three houses being built on the west edge of the TRP, on the north side of CR 42, produced a remarkably high flow (over 100 gallons a minute) at 1300'. This of course is no guarantee that it could happen again, but goes to show how unpredictable the water resources are.

Of the three dominant geological formations, Ancha offers the best hope for water production, but it lies only in a section of the TRP unsuited to development, and too far away to pipe to the proposed site. The best bet is to drill through the upper to the lower Galisteo Formation with wells of 1000-1300 feet deep -- increasingly common as the water table diminishes and sinks.

The water search was primarily focused on some 65-70 acres on lower section 21 of the TRP (a pretty little valley between two ridges, south of CR 42, invisible from the road or from any other community) and on section 17 (north of CR 42). There are two potential drill sites, where the best possibility of a large enough supply to support the proposed 253 units were found.

The zoning now in place for the entire Thornton Ranch allows a density in the TRP plot of 280-300 units. All these lots are *not 40 acres*; some are 12 ½. And in five years these can be subject to a "family split," notoriously difficult for the County to regulate because nothing stops the "family" from selling and subdividing again, and all these transactions cannot be rewound.

As it stands now, if you buy land, you automatically receive access to 3 acre feet of water. The County's *requirement* per unit is only ¼ acre foot (average household use, half of which is usually spent outdoors). Harrison estimates that the TRP could use as little as .5 to .2 acre feet by judicious use of new techniques for re-using wastewater and other conservation and regulation strategies.

What we all want to know, of course, is what the drawdown effect of any development will be on the Galisteo Basin's residential wells. It is not yet clear, for instance, whether the very deep wells would affect our shallow ones or just other deep ones.

Hugh Nazor, of the San Marcos Association (which just got its planning go-ahead from the County Commission), urges us to think about those living downstream in sections of San Marcos and Cerrillos. They (and County Planner Jack Kolkmeyer) support the Thornton project because it will save water, land, and wildlife habitat.

Harrison and Commonweal will soon prepare impact analyses to better understand effects on existing or proposed wells in Galisteo and Cerrillos, but even these studies will still be speculative until the expensive process of actual drilling begins.

Of course we would all rather see nothing at all built around Galisteo. However, in my opinion (influenced by work with the county open space committee), the Thornton Ranch Project is by far the best alternative to a landscape dotted with up to 300 homes, roads, and wells. The TRP is a compromise, and many problems need to be worked out, but it is also an admirable conservation strategy, a bid to change destructive development patterns, to avoid the "Eldorado/285 mentality," and to set a new and innovative standard for environmentally resourceful living on this fragile land.

It is very rare for a community to be consulted about development in such detail and so early in the game. Lets take advantage of this and use our options intelligently, and together. Good planning is what will protect the character of Galisteo. And good planning will involve everyone who lives here.

The Traditional Community planning process that is just beginning is not limited to the village boundaries. In fact, isolationism would be disastrous. We have to think about the big picture as we plan for our smaller one. Regional planning with the County, with the San Marcos Association to our west, and with the 285 Coalition to our north and east, are integral parts in our goal to protect and preserve our historic village.

#### **CORRECTIONS AND DIALOGUE WELCOMED.**

*(\*I speak only for myself, and not for the Traditional Community Land Use Plan Steering Committee, which has not even begun to consider this project).*

**EL PUENTE SPONSOR  
OF THE MONTH:  
MARILYN ("PETE") FORBES**

## **GALISTEO CLASSIFIED**

**ADS ARE FREE, AND FOR GALISTEO RESIDENTS ONLY.** Contact: Box 77 (Rte. 41 at Avenida Vieja) or call 466-1276 by **September 5th** for next issue.

### **WANTED**

The Fire Department is looking for a large (4'x8' or even larger) **Southwest style table** for the station. Chairs too, if you've got them. Donation or reasonable price. Call Jean Moya, 466-1544.

### **FOR SALE**

**GALISTEO HOME**, 360 degree views on hilltop entering Galisteo from north; 4 acres, 3 bedrooms, 1 ¾ baths. Lowest price in village: \$299,000. Call Ann Yeomans, 466-6070.

**Never-used APC Battery Backup/Surge Protector for your computer:** \$50 (new \$65): call Lucy, 466-1276.

### **SERVICES**

**Professional Housesitter**, Long term/short term. Respectful care for your home and pets. Britt Lee, 466-3096.

**Tractor with implements and operators** for hire. 466-0392 or 466-0204.

**S.B. Lejo/ Sina Brush** is taking special orders for original antique Mexican furniture. Call 577-4045.

**Galisteo Caretaking Services:** For the Chores You Ignore! short notice, small jobs, housesit, have truck. Richard, 466-7723. Call **Beth** for **housesitting/ petcare/vet runs/odd jobs/studio assistance/party help/you name it...** in Galisteo, 660-6012.

**Galisteo Woodworks:** for your custom woodworking needs. Furniture and furniture repair. Antonio Chavez, 466-3601.

I will take **care of your pets**. I can also **watch children** when needed. (I am thirteen years old.) Simone Montoya, at 466-1518  
**Nizhoni School: High School**, grades 9-12, **College of Divinity, Academy of the Media**. Some classes open to public. Info:466-4336 or 466-1975. For **Soul-Centering Clinic:** 466-2316.

**Electrical Concepts:** Residential/Commercial/Industrial. Hansi Mohn and Michael Anaya, 988-8853.

**Native Bloom**, Landscape design/maintenance. Linda, 466-4658.

**Restore your old photo:** We copy, repair, and reprint your favorite damaged or fading photos. Richard/Cara 466-7723.

**Private exercise and Yoga Training** with Ron Helman. 34 yrs. experience. All levels and conditions welcome. 466-1919.

**Linda Vista Stables:** Beginner western riding for children and adults; 1-2 hr. trail rides; short-term boarding. 466-8930.

**Carpentry:** Closets, hand-carved dining room tables, patio benches, custom gates, doors, etc. 35 years experience, local references. Onesimo Montoya, 466-1430.

**Common sense, gentle dog-training:** house manners, management problem-solving at your home; also limited boarding. Twenty years experience. Call Evelyn, 466-1875.

**Galisteo Dream Group:** presented by Ann Yeomans, M.A. Join us for a weekly Jungian/ archetypal approach to dream work, Tuesdays, 6-8 PM, Call 466-6070.

**Acupuncture, herbal medicine, feng shui, nutritional counseling, massage.** Dr. Connie Fisher, 470-9314.

Ben Merrick (15 yrs old): occasional **babysitting** weekends and some evenings; 466-9040.

**Passive Solar Builders:** Locally owned general contractor since 1980. Quality home construction, renovations: Charlie, 466-2118.

**One of a kind sterling silver jewelry/ decorative art, wood/tin.** Barbara & Joe Cooper, El Estudio, 18 the Hill. 466-0133.

**Barbara Holloway Fine Handweaving:** scarves, shawls, vests, jackets, coats, handwoven of luxurious chenille. 466- 2118.