

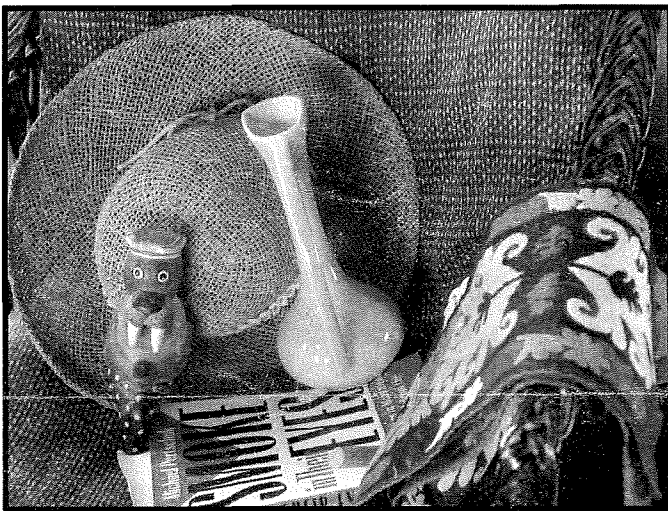
# EL PUENTE DE GALISTEO

ISSUE #185

MAY 2015

## SATURDAY JUNE 6: Flea Market, 9-2. To

**participate:** You can donate items that will be sold at La Sala; 100% of proceeds go to La Sala. Or you can take a table at the Community Center or sell directly from your home. No fee, but please donate 10% of proceeds at the Community Center to the GCA, or from your home to La Sala. Shaun Gilmore will develop a map for that day (466-9040, shaun@shaungilmorestudio.com). For drop-off or pickup of donations, contact Roger Taylor (466-3469, clearskynm@gmail.com) by May 30, or preferably EARLIER.



## VOLUNTEER! FOR THE GALISTEO VOLUNTEER FIRE & RESCUE

The GVFR badly needs volunteers, especially those who work out of their homes here in the village. Of our three EMTs and seven firefighters (another to come soon, when Ed Epping graduates from the Academy in June), most work elsewhere and it takes too long to get back in an emergency. Wildland fires are still a high risk despite the lovely rains. If you are around during the day, and have not yet contributed to your community, please consider joining up. It could be a matter of life or death. Call 466-0396.

## Evelyne Franceschi

**Sept. 10, 1963 – May 11, 2015**

Evelyne made a graceful, peaceful exit at home, after a long and courageous battle with cancer, during which she kept up the spirits of others around her with her *joie de vivre*. Born in Fréjus, France, she was very proud of her Corsican heritage, which bore some resemblance to that of New Mexicans. She studied art at Studio Bercot and her talent soon garnered jobs in the fashion industry, for which she traveled all over the world, where she was always greeted with great affection and respect. When young she wanted to be a painter and continued to paint and draw until her death. She rejected offers to be in the movies.

Evelyne met Bernard Pomerance, her husband-to-be, in 2005, in Eldorado, where she was visiting friends. On moving to Galisteo she immediately became involved with the church, made many friends, and began to create her remarkable film animations ([www.evelynefranceschi.com](http://www.evelynefranceschi.com)). They star an elegant, long-legged protagonist – very stylish, very French. Evelyne was also a superb chocolatier, participating in the Galisteo Studio Tour. Survived by Bernard, their dog Lily, and her brother Gilbert, Evelyne will be remembered as a bright light that flashed through Galisteo for too short a time.

*A prayer service for Evelyne will be held at Nuestra Señora de los Remedios after Mass on May 24<sup>th</sup>. At 2:15PM, all are invited to a potluck and celebration of her life at the Community Center.*



Happier days, Bernard and Evelyne, c. 2008.

## PAVED WITH GOOD INTENTIONS OR THE ROAD TO RUIN?

Roads in and out of Galisteo and environs have been rough over the last year or so. On April 22, the Santa Fe County Public Works Department closed County Road 42 (aka Camino de los Abuelos) to all traffic for over a week for emergency road reconstruction to restore the portion damaged by large gravel trucks, some headed for the reconstruction of the Galisteo bridges. CR 42 was not built with that kind of heavy traffic in mind, but ironically it was not included in the proposed weight limit ordinance (see below). Why not? Where was our County Commissioner?

The affected portion of CR42 was about 5 miles east of NM 14. Motorists and bicyclists had to "seek an alternate route... and allow additional time to negotiate this work zone." Residents to the west of the construction area were forced to utilize NM 14 for access and residents to the east were told to use NM 41. The good news is that large trucks are still barred from crossing to NM 14 this way, and hopefully that will last. (For further information or to put in your 2 cents worth, contact Diego Gomez, Santa Fe County Roads Maintenance Manager at 992-3025).

\*

And at last, on April 28, after a unanimous 5-0 vote, the Board of County Commissioners approved the long awaited ordinance establishing weight limits on four County-maintained paved roads, including CR 33 to Lamy. Robert Martinez of the Public Works Department opened the final hearing with a brief overview of the ordinance and explained staff-recommended changes. (View the final draft at the County website: santefecountynm.gov.)

Over a year of citizen activism, led by NOCoil, has succeeded in vanquishing plans for crude oil transfers at the Lamy railway station and the birth of this significant ordinance. Can it eventually be applied to CR42?

\*

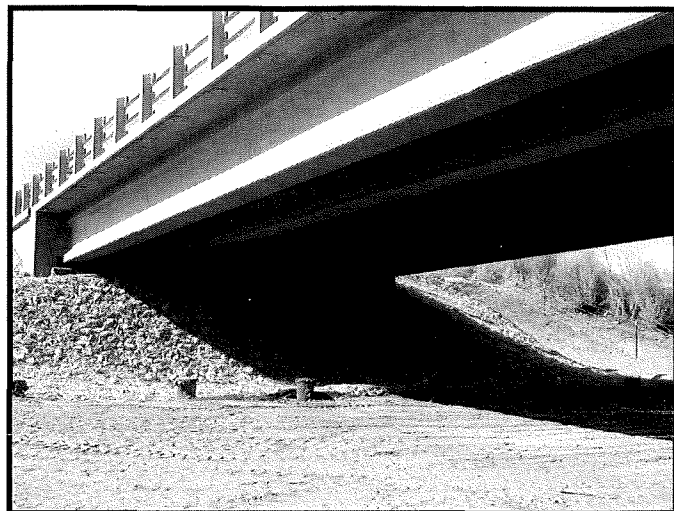
Finally (or never say finally in this saga), the endless work on the two bridges south of the village is purportedly winding down, though you'd never know it from the gigantic machines, mountains of dirt, and constant racket I see out my window as I write this. Habib Abi-Khalil, Assistant District Engineer, NMDOT District Five, tells *El Puente*:

"The bridge project is nearing completion. We anticipate that the contractor will complete the paving by the end of next week (May 29). We also need to apply the friction layer on top of the paving and we need to overlay the bridge decks with an epoxy material and gravel. Seeding and permanent signing will follow these operations. I anticipate that we will be done with all the project items by the end of June. We have the walkways across the bridges blocked off because we are still missing some of the inserts for the pedestrian railing. The inserts should be delivered and installed this week. Once installed we will make sure all the features are in place to safely open the walkways. We appreciate your patience during the construction of this project.

"As far as any work through the village, the NMDOT has no plans at this time."

Mr. Abi-Khalil has been consistently courteous and prompt to answer complaints and requests for information. But rumor

also has it that while the heavy rains should have interrupted construction, it went ahead, perhaps for the Century bicycle race on May 17<sup>th</sup>, or because the contractor was losing money. The soil on the east side of the creek is apparently difficult to pave over and rain should have made it inadvisable.



Progress! Under the Galisteo Bridge.

## WATER ASSOCIATION MEETS

On April 23<sup>rd</sup>, the Galisteo Mutual Domestic Water Consumers Association held its annual meeting, with a quorum, presided over by Treasurer Wayne King in the absence of President Rod Hall. Along with maintenance and improvement of the system, issues under discussion included more frequent meetings of the Board and term limits for officers.

Rod Hall, who lives here in the winter, is the longtime President. Like him, other generous souls have been on the Board for many years. "Not that we want to!" said Vice President Scott Diffrient, who has served for 26 years. "Stay too long and you deserve what you get!" said Richard Patton, another lifer, who is the Licensed Operator of the water system. (This demanding job is required of every system and involves taking courses to be certified, and then "continuing education.") It was decided that these Board members had to stay on, since their knowledge, experience, and contacts with the County are invaluable, but that the officers should rotate.

Janice Griscom, Matthew McQueen, and Joette Trofimuk (yet another longtime member) have all resigned. Diffrient's, King's, and Phillip Tuwaletstiya's terms were up. All were re-elected. Hall and Foreman Antonio Chavez are in the middle of their terms. King was re-elected as Treasurer. Patton became Secretary (he voted against himself, but no luck). New Board members are Anna Cardenas, Michael Golino, and Lucy Lippard.

Also discussed was some form of compensation for archivist Florence Sohn and bookkeeper Romona Scholder, who do a tremendous amount of work but don't want to be on the formal Board. The result of the term limits discussion was Diffrient's resignation as Vice President and his replacement by Tuwaletstiya, giving Scott a well-deserved rest (sort of) but no escape. (Cont. p. 3)

Only two members of the Water Association are in significant arrears as of mid April; turnoff threats tend to bring in the payments. Future discussions may look at the success of phased pricing for greater levels of use, as in Santa Fe, which attracted national news coverage recently. Ranchitos also does this.

Maintenance consists primarily of broken and leaking pipes. But in 1997, the Water Association was misled by engineers and the 2" ID (Inside Diameter) of the feedline pipe running under the highway is too small. It must be replaced by a 4" pipe, which should serve for any foreseeable future. At an emergency meeting of the Board on May 18<sup>th</sup>, a contract with utility contractor BET, LLC was approved. Excavation will begin as soon as permits are acquired, probably in mid-summer. It will take place around the old mailboxes next to the church.

Readers please note that Water Board meetings are open to the entire membership and are posted on the mailbox bulletin board; non-members are also welcome, though they cannot vote.

## BROADBAND IN OUR FUTURE?

Over the years, Liz Rose has been trying to establish Broadband Internet service in the Galisteo area via the LCWA (La Cañada Wireless Association). Dana Simmons, New Member Orientation and Training Coordinator, writes:

"We are an all volunteer organization. Over the last few years, we have not been able to offer our Internet service to the Galisteo area as we have no volunteers there. We are seeking a year-round Galisteo based volunteer" who would work with other LCWA volunteers in the Eldorado and Lamy areas managing the new Galisteo area members.

"Most of the LCWA volunteers have some technical orientation (comfortable with computers, their home router, interested in learning more about wireless networks, capable of installing a rooftop antenna and the necessary cabling to an inside router). Any skill lacking will be taught by the other more experienced volunteers. If you are interested in joining LCWA and being the Galisteo go-to person, please contact me." (danagsimmons@gmail.com, 505-216-6161.)

As a member of the GCA Board, Michael Golino is leading the investigation into wireless possibilities for Galisteo. He may meet with LCWA, but has some other suggestions as well. "From what I understand," he writes, LCWA "is a WISP system (wireless internet service provider) much like Higher Speed Internet and will have a lot of the same issues: service capacity, need for line of sight between transmitters and receivers (a real problem in Galisteo because of hills and trees), reliance on relays (which tends to be the problem with Higher Speed's system)."

Right now Golino is looking at two other possibilities for Galisteo: 1) A system that uses TV White Space which could deliver up to 100Mbps up and down (this system does not require line of sight). 2) Fiber optics which could deliver Gigabit service to Galisteo residents curbside (no antennas). "Both of these directions would have reasonable costs, professional service (not volunteers) and capacity which will allow for almost unlimited uses by all Galisteo users." Golino will report with more information to the next GCA Board meeting.

## PEDACITOS/BITS AND PIECES

Dr. Andrew Lustig, an ER physician at Christus St. Vincent and founder of Global Outreach Doctors, went to Nepal to help with the earthquake emergency. He and his fellow volunteers brought 300 pounds of donated medical gear and trauma supplies into the country, after delays caused by government bureaucracy at the airport (*The New Mexican*, 5/5).

Harmony Hammond represented her New York Gallery, Alexander Gray, at the Frieze Art Fair in New York in May—a big deal!

Angie Beauchamp graduated from Skidmore College in New York State with an MA in Film Theory and Gender Studies. She gave the "Call to Celebration" speech to open commencement ceremonies on May 16<sup>th</sup>.

Shed raising at La Sala was foiled by the very welcome rains and will be rescheduled as soon as the weather cooperates.

An exhibition by Anne Appleby at the Charlotte Jackson Gallery in Santa Fe (554 S. Guadalupe) is titled **The Galisteo River Basin Paintings**, and continues to May 31. The (almost) monochrome works are inspired by daily walks through the Galisteo Watershed and her interactions with the plants that line her path, "their shifts and hues... differences with weather or changes of the light."

The New York run of Bernard Pomerance's play, *The Elephant Man*, starring Bradley Cooper, was a huge success, and sold out for fifteen weeks. It will open soon in London.

"Free the Sandoval Kids. Stop the Harassment" read a printed sign briefly posted at the mailboxes, before someone scrawled an expletive on it.

On May 14<sup>th</sup>, Studio Tour participants met to get sign up packets and to hear reports from the hard-working committees. For further information, contact Amy Sealove (Chair) at 466-3541 or Barbara Seiler (Co-Chair) at 466-4767.



Chief Jean Moya receives an unofficial trophy at the GVFR dinner in January for all the work she does for the community. She spearheaded a long, complex ISO task force that improved our insurance ratings, based on an evaluation of the department's capabilities. Three Cheers for Jean!

## HISTORY TIDBIT

The population of Galisteo in the 1890s remained around 700; "some residents of Galisteo took advantage of the nearby public domain and filed homestead claims where they then grazed their livestock." Villagers raised sheep, cattle, horses, corn, pinto beans, and a probably a few other crops. "The country is settling up considerably," reported the newspaper. "A half dozen families from Fort Worth, Texas located near Galisteo this month, and others are en route. They appear to be thrifty people with good range stock. The citizens are glad to welcome them." (What became of them?) The article went on to mention Ambrocio Pino's herd of one hundred brood mares foaling well; "losses by loco weed were none, whereas in the last five years, many died." One A. Kirschner had 75-100 horses on the Galisteo range and two unnamed Portugese brothers had started a chicken ranch. Even the fruit crop was "bountiful," doubling the ordinary yield.

**EL PUENTE SPONSOR:  
ROGER TAYLOR**

## GALISTEO CLASSIFIED

**ADS ARE FREE, AND FOR GALISTEO RESIDENTS ONLY. PLEASE CALL 466-1276 TO UPDATE OR DELETE YOUR ADS. Next deadline: June 15<sup>th</sup>.**

### WANTED

**House for Rent:** After 4 years renting in Galisteo, our place has sold. We are eager to find another home, quiet, preferably a bit isolated. We are semi-retired, have good local references, don't smoke, no pets, and are very responsible. We are also available as caretakers. Joyce and Bill (206-860- 7969 or [wmkoogler@hotmail.com](mailto:wmkoogler@hotmail.com)).

### FOR RENT

**Charming vacation Casita** in the heart of Galisteo, available for rent by the night, week or month. Steve or Jean, 466-1544.

### FOR SALE

**Windmill:** Aermotor six foot fan plus extra section of blades, thirty foot steel tower. \$1950.00, SINA AT 577-4045.

**Talus Wind Heritage Meats.** Local New Mexico lamb, beef and turkey available. Please contact Ryan, 505-982-7782 or [Ryan@taluswindranch.com](mailto:Ryan@taluswindranch.com), or <http://taluswindranch.com>.

### SERVICES

*Intern will travel: Need extra help during parties, snow shoveling, yard cleaning, housekeeping or pet sitting? Call John Garcia at 505-316-1837.*

**We build and repair coyote fences; haul trash; yard work & other odd jobs.** Fair prices, local references, Michael J. Anaya, 660-2275.

**Dave's Auto Repair:** restoring, minor repairs, painting. Local refs. Free estimates: David Montoya, 505-501-1991.

**Gentle, Relaxing Yoga:** Public sessions: Sundays and Tuesdays 4 - 5:15 p.m.; Fridays, 7:30AM. 5614B, Hwy #41, Ruby, 466-1961.

**JVS will remove (live) rattlesnakes.** Call 466-1064.

**Maria's Personal Assistant Services:** Elder help, errands, office support, packing/shipping: 466-8930.

**Common sense, gentle dog-training:** house manners, management problem-solving at your home, and limited boarding. 20 yrs. experience. Call Evelyn, 466-1875.

**Galisteo Woodworks:** for your custom woodworking needs. Furniture and furniture repair. Antonio Chavez, 466-3601.

**Welding, flagstone, moss rock, fountains, plumbing, sprinkler, drip systems, plus Gopher Control.** David Maestas, cell 670-8608 or 660-9715.

**Pet and housesitting, watering plants, feeding animals, etc.** Call Linda Jones, 310-2904.

**The Orchard: Full service catering, personal chef, and Care Network.** Corey McGillicuddy, 466-1831.

**Firewood, Misc. Hauling, Odd Jobs, Humane Custom Butchery, CAD services.** Phone 466-8967 or cell: 435-3067, [Adan.cardenas1@gmail.com](mailto:Adan.cardenas1@gmail.com).

**Barbara Holloway Fine Handweaving** scarves, shawls, vests, jackets, handwoven of luxurious chenille. 466- 2118.

**Dream Interpretation:** Learn about the message from your Inner Self in your dreams. Veronique Cartier, 466-0803.

**Meditation and Knowings** class with Chris Griscom, Sundays at The Light Institute, 5-6:30 PM. Free to Galisteo residents. 466-1975.

**Carpentry:** Custom closets, hand-carved tables, benches, gates, doors; also electrical work. Ted Montoya, 231-3671.

**Barbara King Pottery:** functional and decorative, handcrafted with a variety of glazes on white stoneware. 466-3219.

**Linda Vista Stables:** short-term boarding. 466-8930.

**Passive Solar Builders:** Locally owned general contractor since 1980. Quality home construction, renovations: 466-2118.

## ++ EL PUENTE DE GALISTEO ++

**Editor:** Lucy R. Lippard. **EL PUENTE logo:** Cara Lee.  
**Printer:** Allegra. **Comments, suggestions, contributions to EL PUENTE, 14 Avenida Vieja, 466-1276 or [flip14@wildblue.net](mailto:flip14@wildblue.net).**  
**NEXT DEADLINE: June 15<sup>th</sup>. TO SPONSOR: \$75 check to GCA, noting "for newsletter."**

El Puente de Galisteo  
14 Avenida Vieja  
Galisteo NM 87540