



**APRIL 21, 7PM, the Community Center:
ANNUAL MEETING OF THE GALISTEO
WATER ASSOCIATION**

**APRIL 25: ANNUAL SPRING CLEAN-UP,
Meet at the Community Center at 9 for coffee,
pastry, garbage bags, water, and assignments.
Bring gloves, hats, boots, sunscreen...**

A NEW BOARD FOR THE GCA

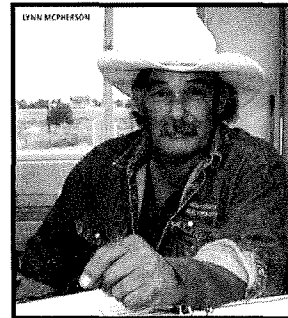
At a community breakfast on March 21st, the Galisteo Community Association held its annual elections. Attendance this year was way over a quorum. There were a number of vacancies, since President Anna Cárdenas, Vice President Roger Taylor, Treasurer Corinne Anaya, and Secretary Janice Griscom were all stepping down and there were member seats to fill. The following good souls were elected by acclamation: Eric Thomas, President, Barbara Seiler, Vice President, David Van Dyk, Secretary, and Wayne King, Treasurer. Judy Tuwaletsiwa stays on. New Board members are Shirley Hirsch, Peggy Diggs, Michael Golino, Evelyn Gregory (who also served years ago) with Lorraine Weiss, Woody Gwyn and Phil Pfeiffer as alternates.

Anna Cardenas spoke about being 14 years old when the Board involved youth and she and our Fire Chief Jean Anaya Moya were among the results of such an early sense of responsibility. This led to the election of Emily Montoya as youth representative to the current GCA Board. She has been a



WILL MARES, 1940-2015

Will Mares passed away on March 30, a few days after his 75th birthday, after a relatively short battle with cancer. Son of Marcellina Mares, he was born in Lamy, one of nine children. The family moved to Madrid, and in 1950 to Galisteo, on Marcellina Lane, named after his mother. He is survived by his mother, his sister Modesta Presley, nephew James Myers, and many other relatives. Will worked for the County for forty years, and was known by his hat, which he took to his grave so people would “recognize him over there.” At his request there will be no memorial.



a volunteer with La Sala, writes poetry, and is working toward a medical career.

Anna and Roger will stay around as “advisors” for a while to get the new Board in gear. Anna reminded us that the GCA’s only income is from rentals of the Community Center. Roger listed among our achievements the demise (for the time being) of the Saddleback Ranch subdivision, the Bicentennial celebration, the Frontiers Community Revitalization initiative, and (hopefully) the imminent completion of the Community plan for the new County Code.

John and Tanya Young , with the GCA, will once again sponsor the Spring Cleanup on April 25. Nick and Joette Trofimuk have donated a Wurlitzer upright piano for La Sala, which will temporarily stay in the Archives Room at the Community Center. And young Jack McQueen is walking. . . .He had peer company at the meeting as the Holloway’s granddaughter Jade also attended. And so did Kai, representing the canine population of Galisteo.

Photo, left: Gwen Feisst.

PEDACITOS/BITS AND PIECES

Patrick McFarlin has curated "Goldfinch Variations" -- an exhibition opening Thursday, April 30 at Peters Projects on Paseo de Peralta. Over 50 artists from around the U.S. explore *The Goldfinch*, a 17th century Dutch masterpiece by Carel Fabritius (also the subject of a novel by Donna Tartt). Included are Galisteans **Steve Davis**, **Jim Sloan**, **John Massee**, **Judy Tuwaletsiwa**, **Patrick** himself, and maybe **Woody Gwyn**. The show is up until June 6.

*

Steve Davis has been awarded a prestigious Guggenheim Fellowship for his painting. I wonder how many of these Galisteo has chalked up? I know of at least two others. Not bad for a town of around 265 people!

*

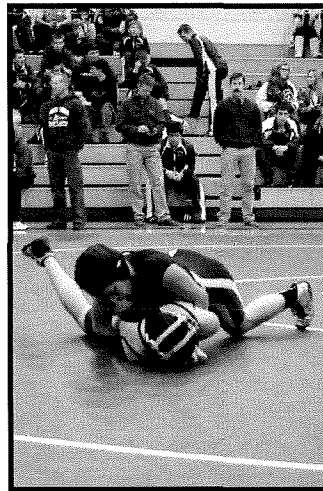
Mike Anaya is fixing up the field he leases from the Land Commission next to the church with a handsome gate and stone corners announcing El Tanque Viejo, near the site of an old reservoir. The rocks are emerging from underground, where there once stood a large home with many rock walls before NM 41 barged through the center of the village, destroying orchards and fields and the open plaza (See p. 4.)

*

On May 31st residents from Lamy, Galisteo, Madrid, and between spoke at a public hearing of the Santa Fe County BCC to support the **proposed ordinance to restrict weight** to 5 tons on four county roads. Nearby CR 33 to Lamy is of greatest interest to Galisteans. Although the misbegotten plan for a crude oil offloading station at the Railroad in Lamy has been abandoned, this restriction would hopefully fend off other such projects on small country roads. Exceptions would be granted for emergency vehicles, highway construction machinery, farm tractors and other necessary intrusions. Violations would impose a \$300 fine.

*

Nancy Helle's teenaged granddaughter, **Alma Mendoza**, formerly of Galisteo, now lives in Port Townsend, Washington, where she recently chalked up a remarkable pair of achievements. Alma is on the school wrestling team, competing with both boys and girls, and she was her sophomore class's Homecoming Queen. (Photos: Caitlin Helle).



*

Our community e-mail warns that **snakes** have already been spotted, thanks to early warm weather. Look before stepping out the door, carry a stick and/or wear boots when hiking, approach rock, wood, damp spots, and outdoor rodent bait boxes with caution. Snakes eat mice and pack rats, which is good in this land of Hanta Virus, so if you see them warming up on the roads, give them a brake. And remember that Jim Sloan will remove them alive from your property. (See classifieds on p. 4.)

*

Scott Canning, director of horticulture at the Santa Fe Botanical Gardens, lost all his fruit at the former Galisteo Inn due to the recent hard freezes. 34 degrees is as low as flowering fruit trees can tolerate. He lost "cherries, apricots, apples and pears, all gone," though he hopes that some unopened buds might still survive. (The snow was not the culprit, and can in fact protect the blossoms.) His afflicted orchard was pictured in *The New Mexican* (4/19).

*

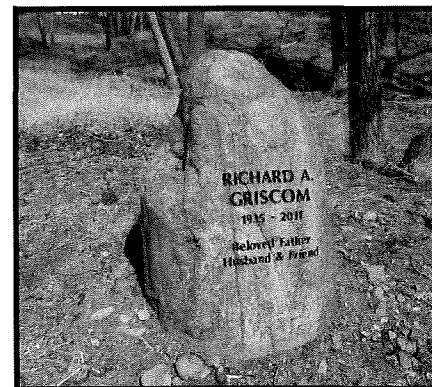
Sina Brush wrote a letter to the editor of *The New Mexican* protesting the El Dorado woman who opposes both chickens and solar installations. And **Nick Trofimuk** wrote one in praise of the Marty Sanchez golf course.

*

Ron Helman (who has just sold his home in Galisteo to move to Tesuque) is playing flugelhorn with a group at the St. Francis Auditorium in the New Mexico Museum of Art: May 1st, 5:30-7:30. Free.

*

Janice Felty Griscom has erected two memorials in the bosque to her late husband, **Richard Griscom**. The wooden bench was made by **John Massee** and provides a lovely resting place for the many creek walkers. **Jim Sloan** manoeuvred the large stone one of his giant machines down the hill in a bravura performance



GRIEGO FALLOUT

For the second time in a year Governor Martinez has replaced an elected Democrat with a Republican to represent us in the Legislature. Galisteo Democrat Matthew McQueen won back Stephen Easley's seat from Martinez appointee Vicki Perea in the Nov. 2014 election. But Republican Ted Barela, the former Estancia Mayor appointed to fill Phil Griego's seat, will now serve as our Senator for District 39 until November 2016, when he intends to run in the general election.

Former State Senator Phil Griego did us no favors by resigning during the recent 60-day legislative session under a cloud of ethics violations surrounding a real estate deal, as his colleagues threatened to expel him. He had served since 1996. His business dealings were exposed in a series of investigative reports in the *Santa Fe Reporter* last summer. (See SFR 3/18/15 for details.)

Santa Fe County Commissioner Liz Stefanics, who was nominated by three counties (but as a Democrat had no chance of being appointed), also plans to run for the Senate seat in 2016. So does Galisteño Mike Anaya, who preceded his brother Robert as County Commissioner and worked at the State Land Office until Commissioner Ray Powell lost to Aubrey Dunn in November. Anaya withdrew his name when it was clear that Stefanics had more popular support.

We are hoping that Griego's departure will not affect the funds he had allotted for work on the Galisteo Bosque.

Also during the legislative session, The House passed a memorial introduced by Rep. McQueen calling on four state agencies to study whether setting a floor price on alcohol would reduce its consumption.

MORE ON LAND AND LIVES IN GALISTEO

Not much news from Galisteo this last month so here's more history, excerpted from the rough draft of an unfinished book on the village. It picks up where the December/January issue of El Puente left off, around 1880.

From around 1850, the Southwestern cattle industry was extremely profitable. Millions of pounds of beef were shipped out as far as Europe. A rancher or speculator had only to secure title to the water supply to control land for surrounding miles. In the 1860s and '70s there was "an almost complete encirclement of the Hispano domain of New Mexico" by Anglo cattlemen.

It soon became clear that the Homestead Act's 160 acres was not enough to support a family in arid New Mexico. In 1877 the Desert Lands Act was passed. It required no residence and became another abused source of free land for the powerful. Now 640 acres could be acquired, but that was too small for stock range and too large for a small farmer to irrigate. One settler could apply for a whole township and not even settle on it.

In 1878, the first steps were made toward a geological survey of New Mexico. The same year, John Wesley Powell, in his *Report on the Arid Regions of the United States*, made an impassioned and prescient plea for bioregional boundaries in the arid west, which unfortunately went unheeded. With the current

water crises, this would still be a great idea, though unlikely to be implemented.

By 1885, however, overgrazing and crowding was taking its toll on the cattle industry and by the early 1890s much ranchland was overstocked, overgrazed, and subject to growing competition from farmers. In 1886-87 blizzards in the Northern Plains caused huge cattle losses, but New Mexico got off relatively easily. The cattle depression here came later, due to droughts, overstocking, and low prices. Demetrio Leyba, described in 1884 as a "well-known citizen of Galisteo" was in Santa Fe trying to sell wool, found no buyers, and was "compelled to go to Las Vegas to sell."

Despite all the land available, there was a national distrust of New Mexico land titles that discouraged rapid settlement. (The U.S. Congress could also take up to 36 years to clarify land titles.) Surveyor General Henry M. Atkinson, who supervised most of the New Mexico land transactions from 1876, turned a blind eye to irregular practices. There was a general feeling among Anglos that most of this land was unusable (in this "low culture" of snakes, Mexicans, and Indians), so carelessness didn't matter. Moreover, the pay was inadequate for good survey work. Low settlement and racism in turn retarded statehood.

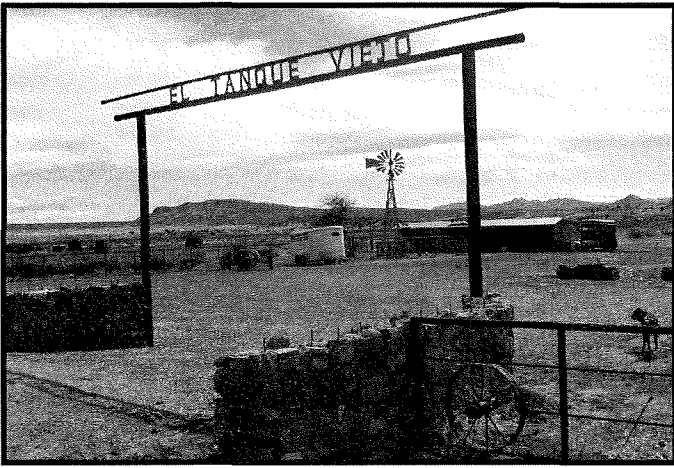
*

Nicolas Pino is listed in 1870 as a wealthy "farmer" with real estate worth \$1500 and other assets of \$1500. He owned a flour mill in Galisteo (location unknown) and from 1866-70 he was also postmaster of the Juana Lopez Grant in the western Galisteo Basin, where the Pinos owned land. In 1872 he claimed seventeen strips in the Cadial grant east of the village and a large piece of land at Stinking Springs (Ojo Hedionda) in the southeastern Galisteo Basin. Nicolas had been a State Senator and President of the Territorial Senate. In his old age, he sported a voluminous patriarchal white beard. He died in Galisteo in 1896 at age 77, of Parkinson's disease. He and his wife Juana have been said to be buried beneath the oratorio in the old Galisteo cemetery, in unmarked graves.

Nicolas' brothers Miguel Estanislao and José Facundo Pino also settled in Galisteo or were landowners in the Galisteo Basin. So was his cousin Ambrocio Pino (referred to at the time as "Honorable"), who in 1870, aged 32, was even richer than Nicolas, with a combined \$1500 and \$2500. In 1884, there is a reference to his "herd of 100 brood mares." In 1876, Ambrocio "staked two flocks of sheep and a herd of cattle in a bet against Santiago Baca of Pecos on a rooster pull," and won. In the 1890s he often stayed at the Bon Ton, an upscale hotel in Santa Fe. At one point Ambrocio defended the character of José Luiz, "the Portugese merchant," whose wife had died of epilepsy; he was accused of beating her, but she had fallen.

SHED HAPPENS

FRIDAY and SATURDAY, MAY 15-16: Work days for La Sala shed building, 9AM to 4PM. Please bring hammer and tools to help us build a storage shed behind La Sala using the pre-fab panels from the bracing project.



See page 2

**EL PUENTE SPONSOR:
Minnie Murray (twice!)
and Theresa Seamster**

GALISTEO CLASSIFIED

ADS ARE FREE, AND FOR GALISTEO RESIDENTS ONLY. PLEASE CALL 466-1276 TO UPDATE OR DELETE YOUR ADS. Next deadline: May 10th.

WANTED

House for Rent: After 4 years renting in Galisteo, our place has sold. We are eager to find another home, quiet, preferably a bit isolated. We are semi-retired, have good local references, don't smoke, no pets, and are very responsible. We are also available as caretakers. Joyce and Bill (206-860- 7969 or wmkogler@hotmail.com).

FOR RENT

Charming vacation Casita in the heart of Galisteo, available for rent by the night, week or month. Steve or Jean, 466-1544.

FOR SALE

Windmill: Aermotor six-foot fan plus extra section of blades, thirty foot steel tower. \$1950.00, SINA AT 577-4045.

Talus Wind Heritage Meats. Local New Mexico lamb, beef and turkey available. Please contact Ryan, 505-982-7782 or Ryan@taluswindranch.com., or <http://taluswindranch.com>.

SERVICES

Intern will travel: Need extra help during parties, snow shoveling, yard cleaning, housekeeping or pet sitting? Call John Garcia at 505-316-1837.

We build and repair coyote fences; haul trash; yard work & other odd jobs. Fair prices, local references, Michael J. Anaya, 660-2275.

Dave's Auto Repair: restoring, minor repairs, painting. Local refs. Free estimates: David Montoya, 505-501-1991.

Gentle, Relaxing Yoga: Public sessions: Sundays and Tuesdays 4 - 5:15 p.m.; Fridays, 7:30AM. 5614B, Hwy #41, Ruby, 466-1961.

JVS will remove (live) rattlesnakes. Call 466-1064.

Maria's Personal Assistant Services: Elder help, errands, office support, housesitting, packing/shipping: 466-8930.

Common sense, gentle dog-training: house manners, management problem-solving at your home, and limited boarding. 20 yrs. experience. Call Evelyn, 466-1875.

Galisteo Woodworks: for your custom woodworking needs. Furniture and furniture repair. Antonio Chavez, 466-3601.

Welding, flagstone, moss rock, fountains, plumbing, sprinkler, drip systems, plus Gopher Control. David Maestas, cell 670-8608 or 660-9715.

Pet and housesitting, watering plants, feeding animals, etc. Call Linda Jones, 310-2904.

The Orchard: Full service catering, personal chef, and Care Network. Corey McGillicuddy, 466-1831.

Firewood, Misc. Hauling, Odd Jobs, Humane Custom Butchery, CAD services. Phone 466-8967 or cell: 435-3067, Adan.cardenas1@gmail.com.

Barbara Holloway Fine Handweaving scarves, shawls, vests, jackets, handwoven of luxurious chenille. 466- 2118.

Dream Interpretation: Learn about the message from your Inner Self in your dreams. Veronique Cartier, 466-0803.

Meditation and Knowings class with Chris Griscom, Sundays at The Light Institute, 5-6:30 PM. Free to Galisteo residents. 466-1975.

Carpentry: Custom closets, hand-carved tables, benches, gates, doors; also electrical work. Ted Montoya, 231-3671.

Barbara King Pottery: functional and decorative, handcrafted with a variety of glazes on white stoneware. 466-3219.

Linda Vista Stables: Beginner western riding for children and adults; 1-2 hr. trail rides; short-term boarding. 466-8930.

Passive Solar Builders: Locally owned general contractor since 1980. Quality home construction, renovations: 466-2118.

++ EL PUENTE DE GALISTEO ++

Editor: Lucy R. Lippard. **EL PUENTE logo:** Cara Lee.

Printer: Allegra. **Comments, suggestions, contributions to EL PUENTE, 14 Avenida Vieja, 466-1276 or flip14@wildblue.net. NEXT DEADLINE: May 10th. TO SPONSOR: \$75 check to GCA, noting "for newsletter."**

El Puente de Galisteo
14 Avenida Vieja
Galisteo NM 87540



Galisteo Volunteer Fire District
Santa Fe County Fire Department
39 Avenida Vieja • Galisteo • NM 87540

April 10, 2015

Re: Public Protection Classification (PPC)
Galisteo Fire District
Santa Fe County, New Mexico

Dear Galisteo Residents,

During the month of November 2014, the Galisteo Fire District met with the Insurance Service Office, Inc. (ISO) to complete the Public Protection Classification survey for our community. Our preparation was extensive and the resulting classification improved our rating from a 6/8B to a 5/5Y effective May 1, 2015.

ISO's Public Protection Classification Program (PPC) plays an important role in the underwriting process at insurance companies. In fact, most U.S. insurers, including the largest ones, use PPC information as part of their decision-making when deciding what business to write, coverages to offer, or prices to charge for personal and commercial property insurance.

PPC is important to communities and fire departments creating guidelines for enhancing fire suppression services. Communities whose PPC improves may get lower insurance prices depending on the type of construction, the hazards of occupancy and other factors.

Please contact your insurance agent to determine the effect these changes in classification might have on your policy.

Sincerely,

Jean Anaya Moya, Chief
Galisteo Volunteer Fire District