

EL PUENTE DE GALISTEO

ISSUE #182

FEBRUARY 2015

Sunday: Feb. 15th, 3PM: Meeting (+refreshments) at Cindy and Frank Lux's home (52-A Las Tres), about the Greenhouse Grocery, the newest Food Co-op coming soon to Santa Fe, led by BJ Pfeiffer, Board President, and Board member Debora Madison. If you care about eating healthy, organic, local, and reasonably priced food, **become a member; go to greenhousegrocery.coop.**

GALISTEO: THE BOOK

Photographer Richard Shuff and his artist wife Cara Lee were co-founders of this newsletter in January 1997. (Yes, we're now in our 19th year!) Cara designed the handsome logo. They moved to San Francisco in 2006, but Richard has just produced a lovely 40-page booklet of black and white photos called *Galisteo New Mexico Seen & Unseen*. On the back cover, he says "Living in Galisteo for 10 years was a joy beyond my words."

In those ten years Richard must have taken thousands of pictures, many of which appeared in the newsletter. You'll see his work and Cara's, hanging in many of our houses. They were active members of the community. Here are some of the images from the book. You can order your own copy (\$28 including shipping) by contacting Richard: rashuff@yahoo.com.



SAVE THE DATE: March 21, 10-11:30: a special Saturday Coffee to entice our wonderful village to show up for GCA elections. We will send out an email and post more info out at the bulletin board. Look for the details. Please come and join us, especially if you want to get on the Board!



HOW WE MET (EL PUENTE'S QUASI ANNUAL VALENTINE'S DAY SPECIAL)

Shaun Gilmore and Nick Merrick: Nick and I met in the photography department at the University of Michigan. I was prone to wearing tight jeans from Brazil and he was prone to admiring the consequences of that small fact. One day he asked me out to play and we've been playing around ever since!

*

Theresa Bohn and Jim Godman: I moved to Hudson, N.Y. and bought a historic home. I was having the house restored and constantly shopping in Jim's store (which focused on architectural salvage). I developed a huge crush on him and found myself in his shop every day, buying things I did not even need or could not use for my house. Just wanted an excuse to see him. We became friends and then went on from there.

*

Peggy Diggs and Ed Epping: It was 1975. Peg was at Cranbrook doing her MFA, and learned of a teaching job at Central Michigan University, where Ed was teaching. He was planning to leave for New York. Hence the job listing Peg applied for. Due to an offer he couldn't refuse, Ed decided to stay for one more year and Peg became a candidate for another position. She went for an interview, spent the day, and hated the place. Before driving back to Detroit, she went for coffee with a faculty member in the student union. Ed appeared, taking a route he never took back to his office. He saw his best friend having coffee with the candidate. They met and talked. As Peg was leaving, she unexpectedly--even to her--shook his hand and said, quietly, "I've never met anyone like you before." She thought she'd die. Smitten, he awkwardly said, "Me too." She got the job. They got each other--despite the tall, beautiful blond he was seeing.

PEDACITOS/BITS AND PIECES

Craig Moya and his partner **Heather Tassel** were featured in a *SF Reporter* cover story (Jan. 21) on Santa Fe cider makers. Their new company is called New Mexico Hard Cider and some of the fruit comes from Moya family land on Canyon Road, while some comes from Craig's uncle's orchard near Villanueva. When they hadn't budgeted for a carbonation machine, "Moya cleverly made his own apparatus from a home soda maker." So far there are six bottled flavors (labels will be designed by local artists) and Craig points out that "People don't know what it's supposed to taste like, so you can experiment a lot." Aside from this venture, Craig is a firefighter, straw appliqué artist, and the couple has two children.

Steve Davis's exhibition, "Domestic Interiors" at the David Richard Gallery in the Railyard, continues until Feb. 21. The paintings are described as "a combination of figurative elements, negative spaces, and gestural abstraction." On Sat. Feb. 7, he gave a talk at the gallery, moderated by artwriter Kathryn Davis.

State Rep. **Matthew McQueen** spoke with fellow Democrat Brian Egolf on Jan. 7 at an event co-hosted by the Santa Fe Green Chamber of Commerce.

It's looking worse for the **endangered Southwest Chief** passenger rail route through Lamy as the Governor has done nothing to support the needed track repairs.

Elayne Patton, a realtor with Sotheby's, represented the buyers of the Equicenter south of Santa Fe, which hopes to attract international jumpers to the Santa Fe Grand Prix this summer. She met one of the new owners when she bought a horse from him for Richard's 60th birthday (*New Mexican*, 1/23).

Frank Hirsch wrote a letter on the Charlie Hebdo controversy to the editor of the *New Mexican* (1/20), recalling his support of a filibuster in the 6th grade but also remembering the lethal effects of vicious caricatures of Jews in Nazi Germany.

Bill Hutchinson, landscape architect in charge of "context sensitive and roadside environment design" for NMDOT on Highway 41, tells *El Puente* that in February the **Galisteo bridge** will be paved and the walkway (supposed to be raised above traffic level) will be constructed. It will be "available for use sometime around the beginning of March."

NoCOIL reports that the BCC hearing on the proposed ordinance for **weight limits on County roads**, including CR 33 into Lamy, has been postponed from 1/27 to a possible 2/24.

The New Mexican (1/4) ran an article on a "Galisteo artist" named **Carole Pigott**. Who's she?

REVIVED COMMUNITY PLAN, AND COMMONWEAL

Roger Taylor

In February 2012, after 2 years of steady work (and over a decade of work prior to that!) the Galisteo Community Plan was presented to and approved by the Board of County Commissioners (BCC). The intent of the Plan was to preserve the "Traditional Village" status of Galisteo, as well as to protect the ability of residents to have home businesses (within certain definitions).

As much as possible the Galisteo Plan was developed to match up to the new Santa Fe County Growth Management Plan (SGMP), adopted in 2010. The SGMP provided the guidelines and framework for the Sustainable Land Development Code (SLDC), which provides the legal requirements and definitions for the SGMP. The SLDC was approved at the end of 2014, but not enacted as State law provides that zoning must be addressed and approved prior to the enactment of the new Code. Zoning defines (per community or region) such things as density allowances, size of residential lots, water and sewage regulations, property usage, etc.

In February 2015 the County has begun work on finalizing the zoning requirements. This means that the 2012 group of Planning Committee members for Galisteo have been pressed back into service: Anna Cardenas, Roger Taylor, Lucy Lippard, Leslie Dilworth, and Frank Hirsch. During February and March they will have 4 work sessions with the County to compare the approved Galisteo Community Plan with the final SLDC draft as well as the proposed zoning for the community of Galisteo, to identify conflicts and/or needed revisions.

This group will then convene two community-wide meetings to present their findings and recommendations to the residents of Galisteo and gather their input and approval. At some time prior to September 2015 the committee will then re-present the revised Galisteo Community Plan to the BCC for final approval. Ten other communities are also going through this process, and the intent is to finalize all of their Plans by Fall 2015. Following this, the Zoning for the County will be approved, and then the new Code will be enacted.

*

Commonweal Conservancy (Ted Harrison) has requested to reconfigure the original approved Planning Envelope for the Galisteo Basin Preserve from 10,360 acres to 3,560 acres, to reduce the size of the development (Trenza) from 965 dwelling units to 450 dwelling units, to reduce the commercial and civic land uses from 150,000 square feet to 88,500 square feet of mixed use, commercial and civic land use, and to change the five-phase plan to six phases taking place over a 12 year period.

Rod Hall, President of the Galisteo Mutual Domestic Water Association, and Roger Taylor, President of the Ranchitos de Galisteo Water Users Association, have reviewed the scope of this revised plan -- filed with and approved by the CDRC on November 20, 2014. They have voiced several concerns to the County Commissioners: Commonweal still has only **2.84 afy of approved water rights**; the approximately 7,000 acres being subtracted from the Planning Envelope most likely now becomes "open space," since the development is not yet zoned; this means that lot sizes of 160 acres each could be established for 42-45 home-sites with individual wells; those lots might each possibly be subdivided into 4 parcels of 40 acres, meaning around 200 additional home-sites with wells.

The plan and our concerns will be presented to the Board of County Commissioners around 2 PM on Tuesday, February 10, 102 Grant Ave in Santa Fe.



FRONTIER COMMUNITY INITIATIVE

At the last Frontier Community Initiative meeting on Jan. 13, it was decided to limit the "arts and culture district" of downtown Galisteo pretty much to the crossroads of Via La Puente, CR 42 and NM 41, hoping that "revitalization" projects, or a new "plaza" will all take place around La Sala and the church. The community will be consulted on ideas for a Village Center Design at a public event sometime in the future. Former Galisteño David Griscom is the Economic Development Plan Director for the State. The next (and possibly last) committee meeting will be February 17th, 4-6 at the Community Center.

THE AMAZING VANISHING UFO... AND OTHER NEWS FROM THE GVFR

On Superbowl Sunday, GVFR Chief Jean Moya and husband Steve (also a honcho in the County Fire Dept.) were driving by the Rodeo Grounds when they saw a winged object (glider? small plane? drone? UFO?) flying very low and then disappearing. It didn't reappear and, fearing a crash, Steve jumped out to walk the area while Jean called in a report and arrived with the brush truck. Eventually, twenty one people, some on horseback (because it was too muddy for trucks) and a helicopter joined the search, but found only a lost kite. No downed aircraft or people missing were reported. However, all agreed that it was a "good training" for the next UFO sighting. Apparently the craft had made it up and away without anyone seeing it. The possibility of a drug drop was not ruled out. Or aliens with magical vanishing powers?

Chief Jean Moya has been re-elected Chief of the County Fire Chiefs Association for the sixth year. (She has also served as vice president.)

The annual GVFR holiday party in early January (see below) was the best yet, privately hosted (at savings to the department) by Cindy and Frank Lux. Vegas (not NM) was the theme. There was even a mind-blowing magician - Max Krause of Max's Magic Shop in Albuquerque, who stumped all present (though with hindsight, some of the smarter members think they have figured out the most puzzling trick...). Visiting dignitaries from the County Fire Department were duly impressed.



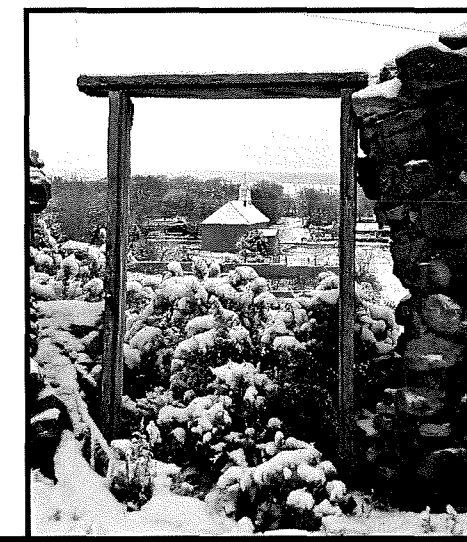
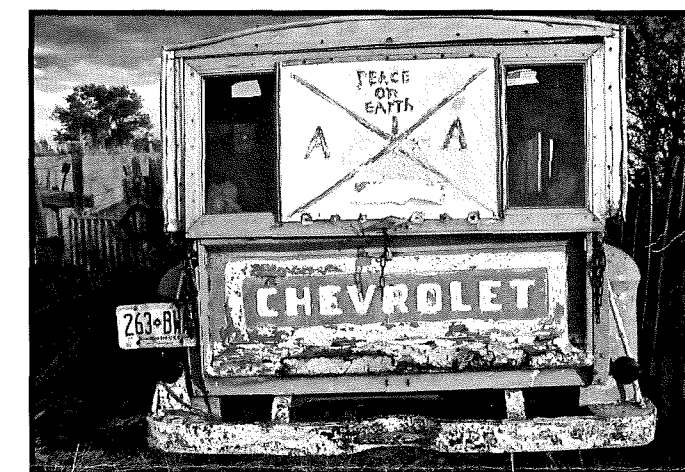
ANNOUNCING THE GALISTEO CONTEMPORARY ART READING AND DISCUSSION GROUP

The Galisteo Contemporary Art Reading and Discussion Group has just been formed, and we invite anyone who is interested to join us. We plan to pursue a variety of topics related to current art making and thinking. The generating factors will be initial questions with readings to be chosen that address those questions. We will aim for a variety of opinions on the questions so that a lively discussion can arise.

The initial questions concern: issues of representation which may remain forbidden in the current clash of ideologies; how does socially based public art practice determine project goals and success; is beauty thought to be avoidance of current realities or necessary in any era; and can artists' process be expanded into a non-art realm.

We will meet at various participants' homes on the second Wednesday of each month, 7pm - 9pm. The first meeting will be Wednesday, March 11 at Peggy Diggs' and Ed Epping's house (32 Avenida Vieja, across from the Community Center). Watch the village mailbox area for a colorful sign indicating the first question and the readings, and how you can get a copy of the readings, which we will provide. Contacts: Janice Wall, Peggy Diggs, Ed Epping, Shaun Gilmore, and Nick Merrick.

Below: Richard Shuff, from Galisteo Seen & Unseen.



LETTER TO THE EDITOR

Volunteers are heartily welcome at Esperanza Shelter for Battered Families, Inc. As a non-profit, Esperanza works at break-neck speed and really needs help to get their work done. They could use volunteers to help with the following: sorting and/or picking up donations; administrative tasks; answering phones; data entry; re-creating their website; help with community outreach events; graphic design; and children's activities. Feel free to contact volunteer coordinator Linda Trujillo: finance@esperanzashelter.org or phone 505-474-5536.

As a volunteer there, I am also happy to field questions.
Peggy Diggs (pdiggs@williams.edu).

EL PUENTE SPONSOR:

RICHARD BUCKLEY

GALISTEO CLASSIFIED

ADS ARE FREE, AND FOR GALISTEO RESIDENTS ONLY. PLEASE CALL 466-1276 TO UPDATE OR DELETE YOUR ADS. Next deadline: March 5th.

FOR RENT

Charming vacation Casita in the heart of Galisteo, available for rent by the night, week or month. Steve or Jean, 466-1544.

FOR SALE

WINDMILL: Aermotor six foot fan plus extra section of blades, thirty foot steel tower. \$1950.00, SINA AT 577-4045/**Talus Wind Heritage Meats.** Local New Mexico lamb, beef and turkey available. Please contact Ryan, 505-982-7782 or Ryan@taluswindranch.com, or <http://taluswindranch.com>.

SERVICES

Intern will travel: Need extra help during parties, snow shoveling, yard cleaning, housekeeping or pet sitting? Call John Garcia at 505-316-1837.

We build and repair coyote fences; haul trash; yard work & other odd jobs. Fair prices, local references, Michael J. Anaya, 660-2275.

Dave's Auto Repair: restoring, minor repairs, painting. Local refs. Free estimates: David Montoya, 505-501-1991.

Gentle, Relaxing Yoga: Public sessions: Sundays and Tuesdays 4 - 5:15 p.m.; Fridays, 7:30AM. 5614B, Hwy #41, Ruby, 466-1961.

Bookkeeping and QuickBooks Services. Contact Diane Dorsey, 505-466-1919 or diane@dorseybooks.com. Visit DORSEYBOOKS.COM.

Ron Helman Life/Business Coach 466-1919.

JVS will remove (live) rattlesnakes. Call 466-1064.

Maria's Personal Assistant Services: Elder help, errands, office support, housesitting, packing/shipping: 466-8930.

Common sense, gentle dog-training: house manners, management problem-solving at your home, and limited boarding. 20 yrs. experience. Call Evelyn, 466-1875.

Galisteo Woodworks: for your custom woodworking needs. Furniture and furniture repair. Antonio Chavez, 466-3601.

Welding, flagstone, moss rock, fountains, plumbing, sprinkler, drip systems, plus Gopher Control. David Maestas, cell 670-8608 or 660-9715.

Pet and housesitting, watering plants, feeding animals, etc. Call Linda Jones, 310-2904.

The Orchard: Full service catering, personal chef, and Care Network. Corey McGillicuddy, 466-1831.

Firewood, Misc. Hauling, Odd Jobs, Humane Custom Butchery, CAD services. Phone 466-8967 or cell: 435-3067, adan.cardenas1@gmail.com.

Barbara Holloway Fine Handweaving scarves, shawls, vests, jackets, handwoven of luxurious chenille. 466-2118.

Dream Interpretation: Learn about the message from your Inner Self in your dreams. Veronique Cartier, 466-0803.

Meditation and Knowings class with Chris Griscom, Sundays at The Light Institute, 4-5:30 PM. Free to Galisteo residents. 466-1975.

Carpentry: Custom closets, hand-carved tables, benches, gates, doors; also electrical work. Ted Montoya, 231-3671.

Barbara King Pottery: functional and decorative, handcrafted with a variety of glazes on white stoneware. 466-3219.

Linda Vista Stables: Beginner western riding for children and adults; 1-2 hr. trail rides; short-term boarding. 466-8930.

Passive Solar Builders: Locally owned general contractor since 1980. Quality home construction, renovations: 466-2118.

++ EL PUENTE DE GALISTEO ++

Editor: Lucy R. Lippard. **EL PUENTE logo:** Cara Lee.
Printer: Allegra. **Comments, suggestions, contributions to EL PUENTE,** 14 Avenida Vieja, 466-1276 or flip14@wildblue.net.
NEXT DEADLINE: March 5th. TO SPONSOR: \$75 check to GCA, noting "for newsletter."

El Puente de Galisteo
14 Avenida Vieja
Galisteo NM 87540