



ISSUE #157

SEPTEMBER 2012

SATURDAY, SEPTEMBER 15, 6-9PM: Chile and Margarita Cook-Off at the Community Center.
TUESDAY, SEPTEMBER 18, 4-8PM: Overview/ input to the County Code including Galisteo Community Plan, with County Staff at the Community Center.
THURSDAY, SEPTEMBER 27 (TENTATIVE): Meet & Greet for Democratic Candidates for Senate (Phil Griego) and House (Stephen Easley) at the Community Center. Time etc to be announced; see bulletin board at mailboxes.
OCTOBER 20-21, 25TH GALISTEO STUDIO TOUR!!

LA SALA NEWS

This summer has been busy and productive for La Sala with the help of many community volunteers and donations. On June 20th the Patina Gallery in Santa Fe held an event that brought us both recognition from the larger Santa Fe audience and contributions of \$1200 (15% of sales that weekend) for our fundraising efforts. It was a very festive evening with catering donated by Joe Hoback and the Pink Adobe Restaurant and wine donated by Greg O'Byrne. Bill and Laurie Mitchell put together a very impressive slide & video show which we hope to use at future events. Thanks to all who made this event so special.

A second grant from the Northern Rio Grande National Heritage Area has helped us upgrade the electrical service to the building as well as clean the wood ceiling. Two community workdays -- July 14th and 28th -- saw a great turnout of helpers to begin the window restoration. We hope to finish up with painting the windows this fall.

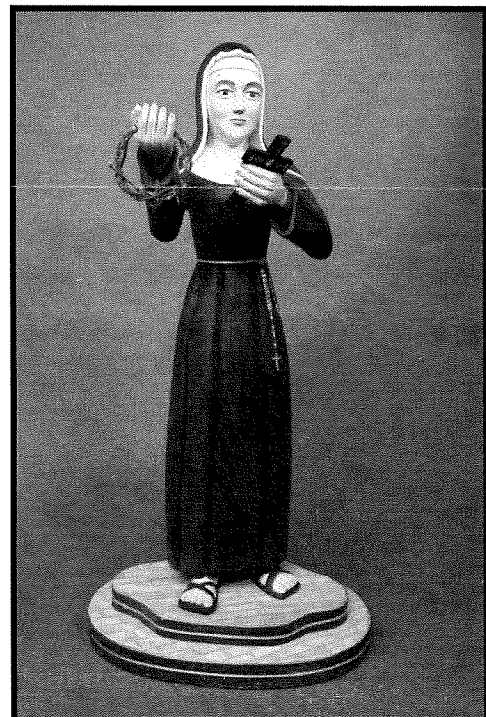
Dianna and Woody Gwyn presented a summer-long art exhibition in the front of their house exhibiting wonderful art from many Galisteo residents, hired Sina Brush to gallery sit on weekends, and donated a series of ads in *Pasatiempo* which brought in many new visitors. Dianna and Woody have been very special friends to our restoration project these past few years and we can't thank them enough for their generous support. Next year Woody will move back into his front studio as we plan to have La Sala finally useable -- though not completed by any means.

Less visible but no less important has been the dedicated work of volunteers on several grant-writing committees. Janet Pfeiffer, Dianna Gwyn, Barb King, Leslie Dilworth, Eric Thomas, Anna Cárdenas and Cindy Lux have spent countless hours working on several possibilities we hope to report in the next few months.

FROM THE EDITOR: Given the pressure of professional deadlines (and advancing age!), the cost of postage, and frequent lack of reader contributions of news, images, and articles, I am thinking about producing *El Puente* only *every other month*. That would be five issues a year instead of ten, beginning in January 2013. Another option is to hand off the editing to someone else every other month. (Anyone out there interested? Give me a call.) In the meantime, I'd love to get some feedback from the community about these possibilities. I look forward to hearing from you. Thanks, Lucy

PEDACITOS/BITS AND PIECES

The first time she entered this category at Spanish Market, Jean Anaya Moya won first place in Painted Bultos for her traditional-style *Santa Rita* -- hand-carved in aspen wood, painted with natural pigments, and finished with piñon sap varnish. Another of her works was reproduced large in the Market's special issue of *Pasatiempo*. (Continued p. 2)



Pedacitos Cont.) **Craig Moya** was one of “Innovations Artists” at Spanish Market this year and won an Honorable Mention in straw appliqué.

*

Roger Taylor and Muriel Fariello had a successful meeting with Senator Phil Griego and the New Mexico Department of the Environment, resulting in the Galisteo Creek Restoration project getting back on track with “highest priority” status. Roger will be working with Griego over the next few months to nail down funding. This is a truly important contribution. Thanks!

*

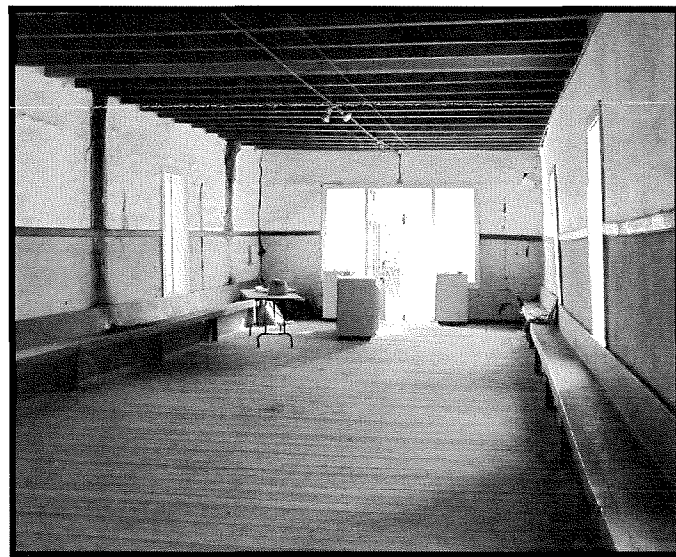
Woody Gwyn’s “Elements of Landscape” show was at LewAllen Galleries at the Railyard in July-August. The catalogue quoted Santa Fe art historian Sharyn Udall: “Like the earth’s surface, each mind has its own topography; Woody Gwyn’s is open, fluid, expansive, like his canvases. Disguised in the persuasive truth-telling of realism, his paintings invite us to explore realms where nature and culture test mysterious new affinities.”

*

“Elegy” – a show of **Deborah Samuel’s** photographs of skeletal birds and animals -- opened Sept. 7 and continues to Dec. 15th at Capriccio’s, 333 Montezuma. Using a scanner in place of a camera, Samuel embraces “all aspects of the digital realm.... I used the available depth of field with the fixed scanner and positioned the objects to determine what and where the focus was to be. It was a painstaking trial and error process but the results speak for themselves.” The effect is an “x-ray quality.... that looks deeper than skin and even bone to reach some level of the mythical.”

*

Brian Moya, rescue technician with the Santa Fe Fire Department, was pictured in *The New Mexican* (9/1) overseeing the demolition of a home destroyed by fire.



Spruced-up La Sala interior (photo: Cindy Lux)

*

Three generations of **the Hoback family** (including Galisteños Priscilla Hoback and Sean Sohn) -- owners of the Pink Adobe restaurant in Santa Fe -- are battling a foreclosure suit, according to *The New Mexican* (8/28).

*

Tienda/House of Ancestors, Priscilla Hoback’s gallery, and La Sala exhibitions have been attracting visitors on weekends, making Galisteo a burgeoning tourist destination!

*

“Pathways. Silent Collaborations”-- **Judy Tuwaletsiwa’s** show of abstract painting incorporating thin sheets of glass at William Siegal Gallery in August -- was featured in *Pasatiempo* (7/27). The work organically absorbs such serendipitous materials as the detritus gathered by a wandering sheep, her grandson’s homework, and insect wings eaten by bats. Participation in an exchange program at Bullseye Glass Company has led her to a series of white, red, and black glass plates that will be developed into a series of walls that the artist will discuss at a conference in June, 2013 in Portland, Oregon.

*

Shaun Gilmore and Janice Wall took part in ART Santa Fe as members of the seven-woman Lady Minimalists Tea Society (featured in *Pasatiempo*, 7/13). Inspired by the grid paintings of Agnes Martin, they meet for late afternoon conversations over tea (or wine) and individual works ensue.

*

Ramona Carpenter, a Santa Fe florist who was born in Galisteo in 1938, daughter of Joe and Tillie Anaya, passed away in July.

FIRE PREVENTION MONTH

Wayne King, Assistant Chief, GVFR

October has been designated as the National Fire Prevention Month. It is a good time to be thinking about fire prevention as we clean up the summer’s growth from our yards and gardens and enter the heating season again. Fire departments around the country have lists and lists of things to do to fireproof our houses, and the following are a few items that may apply to us in Galisteo:

- Install spark arresters on all chimneys servicing wood burning appliances. Heavy wire screens with ½” or less mesh would make a good spark arrester.
- Before installing a spark arrester, look down the chimney and see if it might need cleaning.
- If you have a lot of trees, check your flat roof (after the leaves have fallen) for leaf piles against parapets. Keep firewood piles at least 30 feet from any building. The radiation from a burning woodpile can ignite window curtains, wood studs and straw bale insulation.
- Dispose of fireplace and stove ashes by storing them at least two days in a covered metal container, like a small galvanized steel garbage can.
- Place a reminder sign in front of the fireplace when the damper is closed.

- If your house is located in an area with dense growths of piñons, junipers, or tall grass and shrubs, clear a space 30 feet wide around all buildings. Have an evacuation plan, especially if you have horses, sheep, goats, or cattle on your property.
- If you have a yard hydrant, attach a 100-foot hose to it or have the hose stored next to it.
- If you want to burn brush and garden debris, get an open burn permit. Call the Galisteo Fire Department at 466-0396 and leave a message. We will get back to you and meet you at the station to issue the permit. Have a hose, shovel and rake on hand to control the fire.
- Install fire extinguishers at critical locations around the house: kitchen, workshops, garages, stables.
- Install CO detectors near furnaces, wood burning appliances and in bedrooms.
- Install smoke detectors in halls and bedrooms.
- Replace batteries at least once a year in smoke and CO detectors. Now would be a good time.
- If you have a long driveway, check that it is wide enough and sound enough to handle a large fire truck or ambulance. Prune encroaching limbs and shrubs.
- If you have a locked gate, verify that it has a Knox-Box type of lock. If it doesn’t, call us to verify that the fire department has the lock code or a key to open the gate.
- Check electric and gas appliances periodically. Not only does the lint filter of a dryer clog up but the vent pipe can do so also. Leaky water heaters and furnaces can rot out a wood floor or supporting platform if left unattended. Change furnace filters periodically.

RODEO (SECOND HAND)

Your editor was out of town and no one could be found to write about the 41st Rodeo de Galisteo this year, so here are some excerpts from a good article by Tom Sharpe in *The New Mexican* (in case you missed it).

“It’s one of the last of the small-time rodeos,” said volunteer Frank Spencer, who rode bulls at the Rodeo 30 years ago. “The amateur rodeos are just way more authentic than the professional rodeos. You just get more feeling of being back in time maybe – the rural setting, beautiful setting, the views are incredible from there – and there’s the whole idea of keeping the traditions alive and bringing the young people into the rural way of life... keeping them away from the bad influences of city life.”

The Rodeo de Galisteo includes “one event not usually seen at regular rodeos – “ranch bronc riding,” in which riders may hang on with both hands and use a regular saddle with a horn,” simulating “what a cowboy would do ‘if a horse is bucking you way away from the ranch headquarters. You’re out there by yourself, you don’t hold on with one hand. You use both hands to stay aboard, and they’re using a regular stock saddle ...so

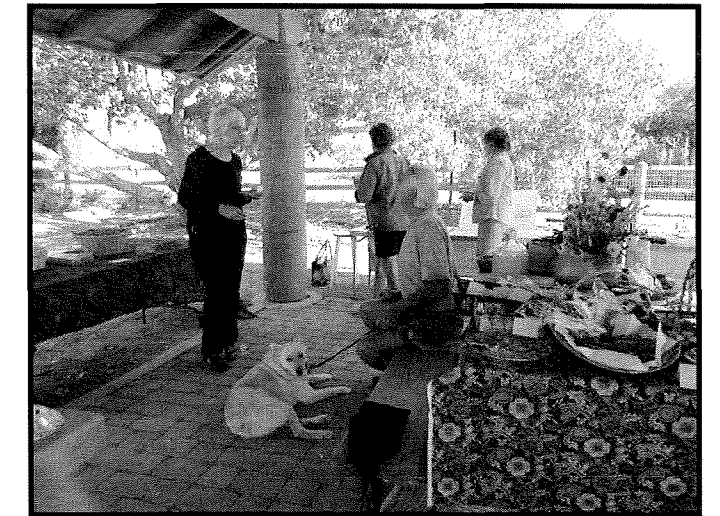
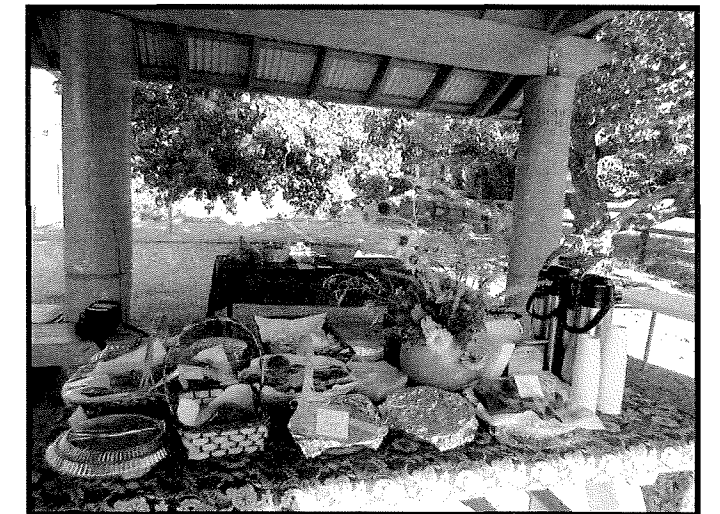
you can grab the horn.... That’s what the rodeo was based on – competing in situations you would find on the ranch.’

“Rudy Sena started the Rodeo de Galisteo in the early 1970s and continues to run it with help from his sons, daughters, nephews, other family members, and friends.”

GREEN BREAKFAST

The morning I got back to Galisteo after being away almost six weeks was a welcoming re-entry to the village. On a lovely sunny day, the shade shelter in Philip Watts II Park behind the mailboxes was resplendent with a table complete with flower arrangement and fresh baked and grown goodies, coffee etc. Along the sides, villagers offered more produce and baked goods from their own gardens and kitchens -- for free and for sale.

We have had some memorable community breakfasts since they were initiated years ago by Marghreta and Melanie. But this had to be one of the most glorious. Thanks to sponsors Anna and Freddie Cárdenas. Let’s make this a tradition too. (Photos by Anna Cárdenas).



EL PUENTE SPONSOR: NANCY HELLE

GALISTEO CLASSIFIED

ADS ARE FREE, AND FOR GALISTEO RESIDENTS ONLY. CALL 466-1276 TO UPDATE OR DELETE YOUR ADS. Next deadline: Oct. 5th.

FOR RENT

House available from Oct. 25-Nov. 28. Call Liz/David, 466-6003.

Adobe Home & sep. artist's studio in village; fireplace, deck, 1 brm, yard, fruit trees: \$1000 mo. + util. Deposit & refs. required. P.Hoback: 466-2255 (priscillahoback@mac.com).

FOR SALE

Western saddle in excellent condition. Denver Saddle Co. 16" seat with breast plate. \$800. 1982 Honda 250R motorcycle for trail or road. In excellent shape, hardly any miles. \$1800. Call Wayne 466-1002 or 690-1771.

Talus Wind Meat CSA Shares available. Contact: 501- 4940; or twichland@taluswindranch.com.

SERVICES

Call Adan Cárdenas for Firewood, Misc. Hauling, Odd Jobs, Humane Custom Butchery, CAD services. Phone 466-8967 or cell: 435-3067, adan.cardenas1@gmail.com.

We build and repair coyote fences; haul trash; yard work & other odd jobs. Fair prices, local references, Michael J. Anaya, 660-2275.

Dream Interpretation: Learn about the message from your Inner Self in your dreams applied to your daily life - Veronique Cartier- 466-0803.

The Orchard: Full service catering, personal chef, and Care Network. Corey McGillicuddy (aka Dragon Lady), 466-1831.

Common sense, gentle dog-training: house manners, management problem-solving at your home, and limited boarding. 20 yrs. experience. Call Evelyn, 466-1875.

Barbara Holloway Fine Handweaving scarves, shawls, vests, jackets, handwoven of luxurious chenille. 466- 2118.

Carpentry: Custom closets, hand-carved tables, benches, gates, doors; also electrical work. Ted Montoya, 466-1430. (messages).

Barbara King Pottery: functional and decorative, handcrafted with a variety of glazes on white stoneware. 466-3219.

Rocky Mountain Handyman. Can do anything! Call Mark Lyons, 629-9323.

MacTech Support and Tutoring, photo digitizing and organizing, and Photoshop lessons: Tom Martinelli, 466-1020.

Beth is available for **petsitting in Galisteo**, 470-7606.

Need a pet sitter or house sitter? Short or long-term care, occasional overnights, reasonable rates, call Maria, 466-8930.

White Dog Cyclery: Your family's certified bicycle maintenance/ repair service. All bikes. Frank, 466-2121.

Linda Vista Stables: Beginner western riding for children and adults; 1-2 hr. trail rides; short-term boarding. 466-8930.

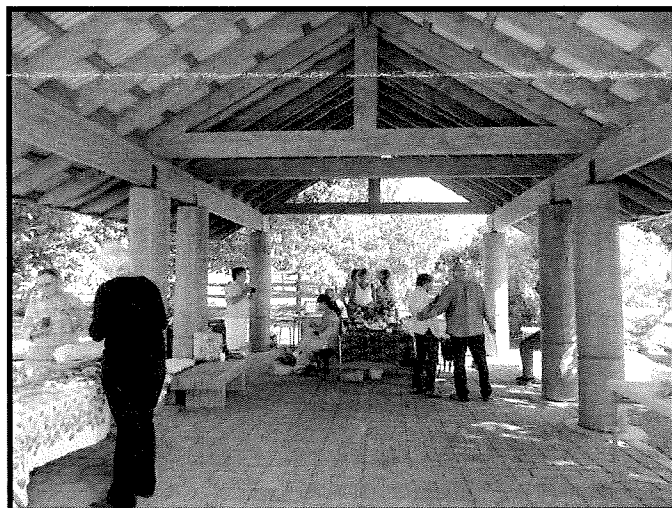
Passive Solar Builders: Locally owned general contractor since 1980. Quality home construction, renovations: 466-2118.

Like things done right? Welding, flagstone, moss rock, fountains, plumbing, sprinkler, drip systems, plus Gopher Control. David Maestas, cell 670-8608 or 660-9715.

Need a permit? Computer Aided Drafting Support for architects, engineers, contractors etc. Adan Cárdenas, 466-8967.

Galisteo Woodworks: for your custom woodworking needs. Furniture and furniture repair. Antonio Chavez, 466-3601.

Dave's Auto Repair: restoring, minor repairs, painting. Local refs. Free estimates: David Montoya, 466-2097.



+++ EL PUENTE DE GALISTEO+++

Editor: Lucy R. Lippard. **Contributors:** Jan Saunders, Tom Martinelli. **EL PUENTE logo:** Cara Lee. **Printer:** Allegra. **Comments, suggestions, contributions to EL PUENTE,** 14 Avenida Vieja, 466-1276 or flip14@wildblue.net. **NEXT DEADLINE: OCT. 5. TO SPONSOR: make out \$75 check to GCA "for newsletter."**

El Puente de Galisteo
14 Avenida Vieja
Galisteo NM 87540

SANTA FE COUNTY FIRE PROTECTION EXCISE TAX 2012

Voters who reside in unincorporated Santa Fe County will have the opportunity to vote on the renewal of the County Fire Protection Excise Tax during the general election on November 6, 2012.

Q: HOW MUCH IS THE TAX?

A: The tax is one quarter of one percent (0.25%) gross receipts tax imposed on all non-medical and non-food items purchased in the unincorporated areas of Santa Fe County. This equates to 25 cents on a one hundred dollar purchase.

Q: WHO WILL PAY THE TAX?

A: The tax is only levied on the unincorporated areas of Santa Fe County. Incorporated areas such as the city of Santa Fe and the town of Edgewood will not have the tax levy.

THERE ARE CURRENTLY 20 OTHER COUNTIES IN THE STATE OF NEW MEXICO THAT HAVE THIS TAX LEVY.

It is estimated that the tax would generate \$1.24 million annually to help fund the critical needs of the County Fire Department. All of the revenue from the tax is retained locally.

Q: WHAT CAN THE TAX REVENUE PAY FOR?

A: The tax revenue will be used to replace aging and worn-out fire engines and water trucks, repair and maintain the department's fire stations, and replace and repair damaged and worn-out firefighting equipment (including hoses, nozzles, protective clothing, helmets and breathing apparatus).

The tax revenue will also be used to replace worn-out ambulances and medical equipment to ensure that the Department's EMTs and Paramedics have the most necessary and current essential rescue and life-saving equipment.

Lastly, the tax revenue will help fund additional wildland firefighting equipment, protective gear and Department radio sites to ensure reliable and rapid communications over a two thousand mile response area.

PLEASE CONSIDER THIS WHEN YOU VOTE ON NOVEMBER 6.

Thanks for your support.

Galisteo Fire and Rescue