



ISSUE #153

MARCH 2012

GCA ANNUAL ELECTIONS MEETING: Wednesday, March 21st, 6:30, at the Community Center. Two Board seats are up for grabs.

COME AND BE HEARD, BE RECRUITED, BE READY TO SERVE YOUR COMMUNITY

*

ANNUAL CLEANUP: Saturday, April 14th; details to come.

*

FREE SMOKE DETECTORS (one per family) available at the Fire Station, Tuesday evenings, 6:30-8:00.

COMMUNITY PLAN APPROVED AT LAST

After a rash of time changes and a few last-minute revisions required by the County commissioners and legal division, the Galisteo Community Plan was unanimously approved by the BCC on the afternoon of February 28th.

The DOT tried to change our passionate language about the roads, and make more changes after the commissioners' revisions; for instance, we were said to be "*looking forward to improvements in pedestrian and vehicle safety*" with (*Cont. p.2*)

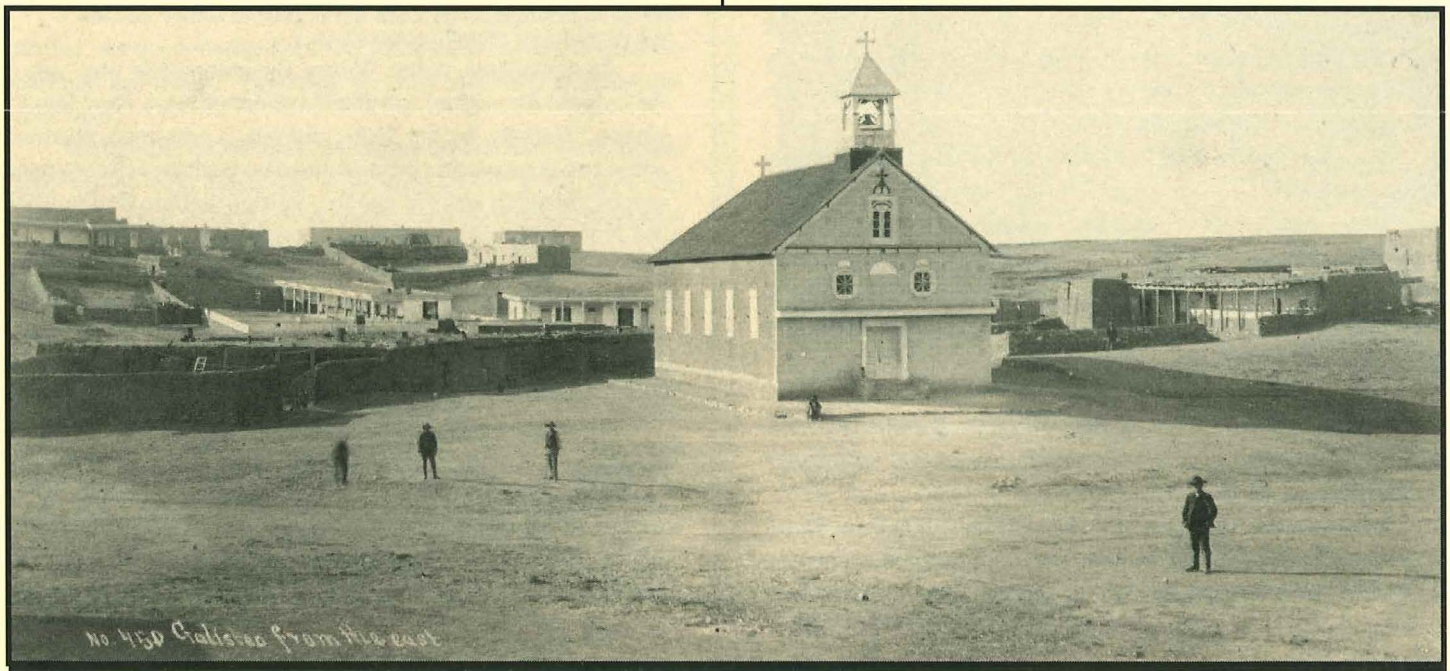
G.C.A. is still looking for hosts for **First Saturday Coffee/Book Swaps** for April 7, June 2, July 7, Aug 4, Sept. 1, Nov. 3, and Dec. 1. October may be held the second Saturday, due to a possible rental.

G.C.A. will supply the coffee. Hosts can bake or buy their pastries, breakfast items or anything else they would like to serve. We ask that you take out any trash in kitchen/baths. Bring in your own ideas to change it up a bit: Provide music or musicians, guest speakers, presentations, etc.

To volunteer or sign up, call Amber Haskell at 466-2905 or e-mail at ahaskell@aol.com.

PLAZAS THEN AND NOW

The University of New Mexico Press recently published a handsome new book, *The Plazas of New Mexico*, edited by Chris Wilson (author of the classic *The Myth of Santa Fe*) and Stefanos Polyzoides, with photography by Miguel Gandert. For some time now, the Galisteo community has been considering ways to commemorate the old plaza that was destroyed (*Cont.p.2*)



PLAN) the redesign of NM 41! But we succeeded in maintaining our original intent, approved by Commissioner Anaya and Attorney Steve Ross. DOT consultant Dave Pennington said they were in the final stage of a 30-month process, waiting for consultation with the Historic Preservation Department. The bicyclist lobby has been very active at meetings to which Galisteo was apparently not invited. DOT spokesman Miguel Gabaldon said they were preparing the Environmental Assessment. Construction will begin by Spring 2013. Our dilapidated bridges are among the State's top ten priorities.

Commissioner Stefanics asked the DOT what they had learned about working with the community during the controversial process of redesigning NM 14 in 1993-96. Gabaldon (rather ominously) warned that the DOT directives may differ from the community's; he didn't want their plans or funding compromised. Commissioner Anaya reminded him that "the plan represents the community's wishes; these are their goals." This does not mean that everything in the plan will be implemented. Commissioner Vigil felt that there was enough flexibility for community plans to be amended later and moved that the plan be approved.

Robert Anaya, citing the high price of the most recent hookups, also expressed concern about the plan's directive that everyone had to join the community water system if at all possible. He asked Anna to address this. She replied that she would never allow economically challenged residents to be shut out, but some regulations, especially on sewers, are necessary to protect the water for everyone. She confirmed that the committee had no intention of restricting mobile homes but reiterated that the standards have to be high.

The Galisteo Planning Committee was congratulated and complimented on the first plan to be adopted under the new Sustainable Growth Management Plan. Commissioner Holian asked to show our plan to Cañoncito.

Approval didn't make the (other) papers, but it was very satisfying for those of us who have worked on the traditional community plan for over a decade. A front-page article in the January 1998 *El Puente* kicked off the initiative, once the County had announced that communities could create their own land use plans under the new General Plan.

On this last stretch, the committee survivors (Anna Cárdenas, Leslie Dilworth, Frank Hirsch, Lucy Lippard, Matthew McQueen, Florence Sohn, and Roger Taylor) benefited from the expert aid of County staff Sarah Ijadi and Robert Griego. Thanks as well to all the other committee members and County staff who have come and gone over the years, especially the late Richard Griscom, who was there from the very beginning.

*

More good news. Later in the same session of the BCC, the GCA's request for funding to install electricity and solar lights in Phillip Watts II Park was approved.

Yet another resolution -- to recognize EWI's Galisteo Basin Conservation Initiative Plan as a model for watershed, natural resources and green infrastructure planning -- was tabled for lack of time, but will probably be heard at the next BCC meeting.

PLAZAS) in 1936, along with orchards, fields, and some structures, when highway 41 barged through it. (See *El Puente* February 2006 for another view of the plaza in 1884.) So it seemed that the book might spark some more discussions as DOT plans to redesign NM 41 move ahead.

The authors call this "a book about the past, for the future." In a Feb. 10th interview on KUNM radio, Wilson described how plazas "capture social interaction from intimate to public in one frame." Gandert added that "photography is a dialogue about time," and his newer work combined with old photographs of plazas offer "ways of communicating with the past."

When the village of Galisteo was founded around 1814, it was officially required to build a fortified plaza and a church oriented east/southeast on an elevated site, with fields below. That would have been on top of The Hill, where the original settlement began. The old church is the mound near the Coopers' house, marked by a cross and a faded painting by Tony Anaya. Without archaeological investigation, there is no way of telling whether it originally had the prescribed low-walled enclosure doubling as a *campo santo*. (See *El Puente* Dec. 1999 for a picture of the old church still standing, but abandoned, in 1884.)

Spanish and then Mexican land grants offered property to the landless poor, and larger plots to wealthier families. The goal was to create bulwarks against attacks by non-Pueblo Indians like Apaches, Comanches, and Navajo. Once the area was made safe, development could take place. Galisteo expanded in the 1840s, when raiding subsided.

The "new" Nuestra Señora de los Remedios at the foot of The Hill was not built until 1882-84, when raids no longer threatened the region. From then until 1936, the large open dirt plaza formed the center of town. It faced the old road, the Ortiz y Pino hacienda, and other homes. La Sala de San José was built next to the church around the turn of the 20th century.

"Plaza, church, and congregation became the three-part module for the creation of a community." Religious processions still occasionally take place around the Galisteo church, evoking the lost plaza. (See *El Puente* April 2000 and November 2009 for pictures of recent processions.)

As in Galisteo, writes Wilson, the automobile was "one of the culprits for neglect and abandonment of many New Mexico plazas." Happily, by the 1950s and 60s, a grassroots historical preservation movement brought attention back to such communal spaces, though it was too late for Galisteo's plaza. By the 1990s the New Urbanism movement revived such spaces, but the authors point out that plazas cannot just be designed and then people will come. "A complex constellation of social, cultural, and economic forces" contribute to the development of vibrant civic spaces, and these are not encouraged by the "American predilection for privacy, mobility, and sprawl."

"Heritage tourism," the authors concludes, should be "in service of rather than at the expense of local quality of life and community sustainability" -- a lesson made all too clear by the history of the Santa Fe Plaza. Short of an unlikely bypass of Highway 41, Galisteo will not be able to revive its plaza. But over the last few years, ideas have been proposed about how to mark the crossroads of CR 42 and NM 41 as (*Cont.p.3*)

Galisteo's center, in memory of lost communal ground. Most of the suggestions have concerned pavement markers, and perhaps historic markers. Photographs (printed on metal) of the pre-highway space could be posted in Phillip Watts II Park. It would also be interesting to map old Galisteo from pictures like that on page 1, by J.R. Riddle, c.1884 (*Courtesy of the Museum of New Mexico Photo Archive; neg. no. 076054; reprinted from El Puente, Dec.2005*).

GCA NEWS

Roger Taylor, Secretary

I have been working with Jan-Willem Jansens and the Santa Fe Watershed organization to salvage the Earth Works Institute plan to restore the Galisteo Bosque. The proposal has been submitted to the State; if approved the timeline will be:

March: Mobilizing residents and participating in a walk along the restoration sites in the bosque.

April: Archaeological survey and 30-day wait for State cultural resources clearance (costs covered by the grant). obtaining a County development/grading permit (about \$300); Community meetings to prepare the project (see details below); documentation of community needs and concerns; signing of landowner agreement letters (and possibly a GCA meeting to clarify the project to the community and discuss community involvement); mobilization of residents for a few brief meetings that focus on (a) clarifying the planned implementation process; (b) practical activities for residents; (c) getting landowner signatures on agreements to allow work on their land and on the undeeded strip of land along the river.

April/May: Community participation in workdays to (a) remove dead wood, (b) identify locations for rootwads and wood chips, (c) identify locations for stacking or procedures for distributing fire wood, (d) plan the relocation of the informal trail through the bosque and where the trail needs to be blocked for ATVs, and (e) photographic documentation of the bosque conditions before implementation.

Last two weeks of May: Prep work for implementation crew arrival; accommodating the crew (they need access, equipment parking, and water). Assisting the crew with tree planting and trail work.

May/June: Community participation in a trail workshop to relocate the trail; assistance in picking up fire wood, with tree planting (along with the work crew), and photo documentation of the implementation process, which is very important to our final report to the State.

June: Optional dedication/celebration and media event.

The funds for this project are coming from grants, however we need an upfront loan of \$10,000 (one or multiple loans) by early April, which would be repaid by end of September, as grant monies are reimbursed after work has been completed rather than provided upfront. (\$2500 has already been promised.) The implementation of the Galisteo project will be completed by June 30, 2012. Please contact Roger Taylor 466-3469 if you are willing to loan some of this amount to the project.

SOLAR SYSTEMS #3

An ongoing series on solar energy systems used by Galisteo residents. E-mail the editor to participate.

Wendy Chase, as told to El Puente

Wendy Chase had her photovoltaic system installed by the same people that Liz Rose used (see *El Puente* Jan.2012). Her eight huge panels are not on the house but elsewhere on the property, connected by lines that were initially foam-covered and got eaten by critters. They were recently re-covered in plastic which (she is told) should increase her output by 30%. There is also one small panel on the roof. Chase has heard that geothermal is a good choice if you live near water, but had trouble getting information and prices.

She uses solar to heat the water for radiant heating. Two rooms (she chose bathroom and kitchen) must be kept at 75 degrees because for some reason, the harder the system works, the more efficient it is. But with the price of propane skyrocketing, solar makes more and more sense. It would make a lot more sense if our government were to truly encourage renewable energy. We are way behind the rest of the world. Apparently in South Africa they have invented very small panels, one of which will take care of a home's entire needs. In the meantime, PNM is dragging its feet on meeting the required 10% of renewable energy by 2012, 15% by 2015, and 20% by 2020. It is also trying to limit the number of people who could apply for "net metering" -- tying into the PNM grid and receiving credit for power gained.

Closer to home: there is a new solar business in the Agora at Eldorado, on the west side, facing the bank. Check it out.



PEDACITOS/BITS AND PIECES

The GCA Board arranged to clean up the leaves in Watts Park. More landscaping cover will be spread on the grounds. Amber Haskell and Roger Taylor of the GCA Board have refurbished the community bulletin board at the mailboxes with new cork surfaces, business-card holders, and paving blocks in front. (*Cont. p.4*)

Joette O'Connor Trofimuk's Photogenesis Gallery at La Fonda has moved up from many years in the basement to a lobby-level space. La Fonda now welcomes dogs (on leashes).

*

In the redistricting plan, Eldorado has been added to our State Representative Rhonda King's domain and subtracted from Brian Egolf's. Many in Eldorado are unhappy about the change and a meeting was held, but no results were reported.

EL PUENTE SPONSORS: RICHARD BUCKLEY & TOM FORD

GALISTEO CLASSIFIED

ADS ARE FREE, AND FOR GALISTEO RESIDENTS ONLY. PLEASE CALL 466-1276 TO UPDATE, CHANGE, OR DELETE YOUR ADS. Next deadline: April 5th.

WANTED

Is there anyone in the village who is good with pcs and could occasionally give me some **computer help** at \$25 per hour? Contact Lucy, 466-1276 or flip14@wildblue.net.

FOR SALE

1950 Willys Jeep, in pieces, complete, has new tires, \$4500 obo. Call Sina for information, 577-4045.

Talus Wind Meat CSA Shares available. Once a month Galisteo pick-up of NM grown lamb, beef, goat, eggs, and more! Full & Half shares available - reasonable prices. Contact Timothy at 501-4940; twichland@taluswindranch.com ;for more info. <http://taluswindranch.com/meat-csa.html>.

SERVICES

Reliable, Experienced Property Management: Author and nature photographer, over 20 years' experience, will provide long-term care of your home, gardens, and animals, in exchange for a comfortable living arrangement in or near Galisteo. Excellent local references on request. Contact Valentine or Lewis Riddell, 505-467-8739 or 510-684-4272.

Dream Interpretation: Learn about the message from your Inner Self in your dreams applied to your daily life - Veronique Cartier- 466-0803.

The Orchard: Full service catering, personal chef, and Care Network. Corey McGillicuddy (aka Dragon Lady), 466-1831.

Pet and housesitting, watering plants, feeding animals, etc. Call Linda Jones, 466-6624.

We build and repair coyote fences; haul trash; yard work & other odd jobs. Fair prices, local references, Michael J. Anaya, 660-8920.

Common sense, gentle dog-training: house manners, management problem-solving at your home; also limited boarding. Twenty years experience. Call Evelyn, 466-1875.

Barbara Holloway Fine Handweaving scarves, shawls, vests, jackets, handwoven of luxurious chenille. 466- 2118.

Carpentry: Custom closets, hand-carved tables, benches, gates, doors; also electrical work. Ted Montoya, 466-1430 (messages).

Barbara King Pottery: functional and decorative, handcrafted with a variety of glazes on white stoneware. 466-3219.

Rocky Mountain Handyman. Can do anything! Call Mark Lyons, 629-9323.

Snowplowing driveways/roads, and rides to and from the airport: Paul Thompson, 660-2171. www.paulthompsonandassociates.com.

MacTech Support and Tutoring, photo digitizing and organizing, and Photoshop lessons: Tom Martinelli, 466-1020. Beth is available for **petsitting in Galisteo**, 470-7606.

Need a pet sitter or house sitter? I will do short or long-term care, occasional overnights, reasonable rates, refs. available. For info, call Maria, 466-8930.

White Dog Cyclery: Certified bicycle maintenance/repair. Your family bicycle service. All bikes, repairs. Call Frank, 466-2121.

Saturday Art Classes for children and adults, Retablos and watercolors. 10-12AM or 2-4PM, weekdays or weekends. Catherine Ferguson, 466-2765.

Linda Vista Stables: Beginner western riding for children and adults; 1-2 hr. trail rides; short-term boarding. 466-8930.

Passive Solar Builders: Locally owned general contractor since 1980. Quality home construction, renovations: 466-2118.

Like things done right? Welding, flagstone, moss rock, fountains, plumbing, sprinkler, and drip systems plus Gopher Control. David Maestas, cell 670-8608 or 660-9715.

Need a permit? Computer Aided Drafting Support for architects, engineers, contractors etc. Adan Cárdenas, 466-8967.

Galisteo Woodworks: for your custom woodworking needs. Furniture and furniture repair. Antonio Chavez, 466-3601.

Dave's Auto Repair: restoring, minor repairs, painting. Local refs. Free estimates: David Montoya, 466-2097.

+++ EL PUENTE DE GALISTEO+++

Editor: Lucy R. Lippard. **Contributors:** Jan Saunders, Tom Martinelli. **EL PUENTE logo** by Cara Lee. **Printer:** Allegra. **Send letters, comments, suggestions, contributions to EL PUENTE, 14 Avenida Vieja, 466-1276. NEXT DEADLINE: APRIL 5. TO BE A SPONSOR: make out check to GCA for \$75, note "for newsletter," send to address below.**

El Puente de Galisteo
14 Avenida Vieja
Galisteo NM 87540