



RODEO DE GALISTEO: July 9-10, 1-5. Saturday parade on Via La Puente, 11AM.
STUDIO TOUR: October 15-16.

WHERE THERE'S SMOKE...

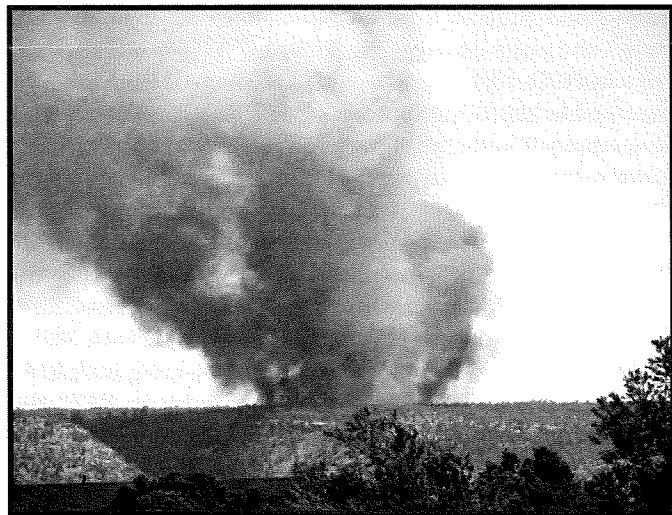
From Friends of the Galisteo Volunteer Fire & Rescue:
If you see someone violating burn and smoking restrictions or setting off fireworks, call 911. Clean lint from your dryers and watch for mice in machines. Have at least a couple of working fire extinguishers in your home; (landlords are responsible for providing them); they expire in a year and can be re-serviced at some stores, including Home Depot.

*

With all of the terrible smoke from the Arizona fires as well as a general anxiety over the lack of moisture, it's hard to know where to check for information regarding fire danger in the Galisteo area. Here are some options:

If you feel that you may be in danger, call 911.

For up-to-date information, call Santa Fe County Fire Dispatch: (505) 428-3710. Or the American Red Cross, Albuquerque region: (505) 265-8514. Or watch the local evening news and check KOB.com for information.



Recent Ojo de la Vaca Fire: Too close for comfort

“WHO KNEW?” Corey McGillicuddy is baseball legend Connie Mack’s grand niece; his real name was Cornelius McGillicuddy.
NEXT: Who was one of five Americans invited to the first ever Family Violence Prevention Conference in New Zealand in 1991?

Lastly, *do not* call the Galisteo Fire Station or your friends and neighbors who are volunteer fire fighters. Unless they are out fighting an authorized fire, they do not know any more than you do. They can, however, give you advice on how you can make your home and property safer in case of any actual fire danger.

*

Air quality monitors are showing as much as 15 times normal particulate matter levels in Santa Fe, and they are higher in the evening. Data from the Environment Department and Forest Service air monitors can be found at <http://air.nmenv.state.nm.us> and <http://www.satguard.com/usfs/default.asp>. For more information about the health effects related to smoke from wildfires <http://nmhealth.org/eheb/index.shtml>. For more about NM fires: <http://nmfireinfo.wordpress.com>. (Cont. p,2)



Phil rides Big Orange (photos: Cindy Lux see page 3)

(SMOKE): The New Mexico Department of Health is advising precautions, especially for sensitive groups -- elderly, small children, or anyone with asthma, emphysema, and cardiovascular disease. Avoid prolonged or heavy exertion and stay indoors as much as possible. Be sure you have your medicines for chronic heart or lung problems. If you experience repeated coughing, shortness of breath, or difficulty breathing, wheezing, chest tightness or pain, heart palpitations, nausea, unusual fatigue or lightheadedness, contact your health care provider immediately.

If there is smoke nearby, remain indoors and close doors and windows to limit smoke inhalation. Vacuuming stirs up particles inside your home. Many air-conditioning units do not adequately filter out particulates. Avoid using swamp coolers when levels are high. Their filter pore sizes are much too large. It's best to turn the unit off until the outside air quality improves. Use a high-efficiency particulate air (HEPA) filter on home air conditioners. Also use re-circulated air in your automobile. When smoke levels are high, do not use anything that burns, such as candles, fireplaces, or gas stoves.

In areas without air quality monitoring equipment, visibility is a good substitute. Use the following guide to determine air quality: If you can see 10 miles and up, the air quality is good; six to nine miles, air quality is moderate; three to five miles, air quality is unhealthy for sensitive people; one and a half to two and a half miles, air quality is unhealthy; 1- 1 1/4 miles, very unhealthy; and three quarters of a mile or less, hazardous.

Personal observation to determine smoke concentrations: Face away from the sun. Determine the limit of your visibility range by looking for targets at known distances. Visible range is that point at which even the high contrast objects totally disappear.

GCA UPDATE

from Roger Taylor, Secretary

NM41 WIDENING CONCERNS: It was decided that the Board would take a more active role on this issue, and Roger Taylor agreed to take the lead. On May 19th, the community was requested to send comments to Pennington Associates; over 2 dozen letters were sent. A letter from the Board summarizing its response to the NM41 proposal will be sent to all members of the community for their input. The results will be aggregated and then presented at a meeting with the head of NMDOT, facilitated by Commissioner Anaya, to be attended by Board members Anna Cárdenas, Roger Taylor, and Joette Trofimuk.

Cleanup Day was a good turn-out, everyone enjoyed the coffee and donuts, and a full truckload ended up in John Young's dumpster for dispatch. Sean Bourne brought his recycling van and gathered cans and other metals. The Board discussed making a monthly or quarterly pickup at the Park, with proceeds given to the individual or to the GCA.

REPORT ON COMMUNITY LEADERS ADVISORY GROUP MEETING: GCA Board President Anna Cárdenas and Roger Taylor (also representing the Ranchitos de Galisteo Water Users Association) attend a bi-monthly advisory group meeting with Commissioner Anaya and representatives of other District communities to establish open dialogue and address current issues, among them: tanker traffic on CR 42 (weight

limits? signage?), NM 41 concerns, and inspection of the Bosque bridge. The Board also agreed that Joette Trofimuk, representing the Galisteo Mutual Water Association, should also attend. One result of the first Community Leaders meeting was the re-establishment of the commuter bus from Galisteo to Santa Fe. **Beginning July 1, a 15-person commuter van will travel from Edgewood in the morning, with stops in Moriarty, Stanley, Galisteo, and El Dorado before terminating in Santa Fe. In the evening the van will reverse this route.** The van will initially be free of charge, with an eventual small fee. More details will be announced soon. Many thanks to Commissioner Robert Anaya who took the lead on this.

MEETINGS: NM 41, NEW COUNTY CODE

In 2005, *El Puente* reported on the NMDOT's plans to widen the Galisteo Bridge at the village's south end. Another meeting was held in 2007. Action looked imminent each time. Fast forward to May 3, 2011. Details are emerging and so are the community's concerns, which Pennington Associates (the DOT's consultants) has tried to answer as follows: *Note corrections to the dimensions given in last month's El Puente.*

New San Cristobal Bridge: two 12' lanes; 4' shoulders (for cyclists), one 4' walkway. Overall width: 38'4".

New Galisteo Bridge (possibly paralleled by old one, depending on Historic Preservation Dept.): two 11' lanes, 4' shoulders and one 4' walkway. Both bridges will resemble the current ones and lost vegetation will be replaced.

Community Core: two 11' lanes, 4' paved shoulders. Lane centerlines remain as is; *traffic will not be closer to buildings than it is now.* A 6' gravel pedestrian pathway is "under consideration" on east side, from Rodeo Grounds to 1/4 mile north of La Vega. Another *option* is brick pavers or stamped concrete for pedestrian crossings north and south of church. Community input could decide these options.

Transition areas to slow traffic to 35 then 30mph: Rodeo Grounds to Avenida Vieja; 1/4 mile N. of La Vega to Goose Downs/Vista Clara; road would be 5-6' wider than it is now.

Miscellaneous: No rumble strips in community core; "weathered steel barriers" where necessary, will blend with setting.

On May 19th, an area-wide meeting on the County's Sustainable Land Development Code (SLDC) was held at the Community Center, with very few Galisteños participating, along with many County staff, two County Commissioners, and some vociferous people from Stanley and Pojoaque. Among the points made: The code will last 15-20 years, so it's really important. Read the plan on the County website. The code does not mandate clustering but there will be incentives for it. The public can propose new CDPs (Concept Decision Points) for the Code Draft Team to consider, then to bring back to the public for review. Final decisions are made by the BCC. Any ordinance can be discarded except for that dealing with oil and gas. At the end of a long meeting there was a discussion of Home Based Businesses as a CDP example. Different contexts demand different solutions. It was unclear exactly how the individual community plans would be codified.

CHAIN GANG AT LA SALA

With the help of Philip Tuwaletstwiwa and his Big Orange Machine, community members heaved rocks for a few hours on June 4th, while Antonio Chavez and Rudy Sena made runs to dump the 100-year-old rubble at the Rodeo Grounds. The goal (achieved) was to expose the north foundation. The big surprise was the exposure of the original straight-up steps to the dancehall entrance. Amazingly, though rocks were flying everywhere, nobody got hurt; sore muscles and smashed fingers were a small price to pay for progress. La Sala's **Western Pleasures Weekend** was also a great success in both fundraising and sheer fun. Thanks to all who helped! ('Like' us in **facebook** for more photos.)



PEDACITOS/BITS AND PIECES

Estevan Padilla (member of the Galisteo Fire Dept.) has graduated from Nursing School at the Community College, becoming an even more valuable member of the community.

In May, a "Polly Peach" tree (not coincidentally the name of his beloved dog) was planted in memory of **Dick Griscom** in the orchard at the Galisteo Basin Preserve, where he enjoyed hiking. The Preserve's newsletter reported: "Richard was deeply committed to the community and the ecological health of the Galisteo Basin. Over the past eight years, he offered thoughtful questions and wise counsel for us at Commonweal Conservancy and, we suspect, for all who knew him. He was an important partner in our work -- helping to ensure that the values and ambitions of the Galisteo Basin Preserve could be realized. It is our hope that the fruit of Richard's Polly Peach will offer food and sustenance to the people and wildlife of the region for decades to come."

Architectural photographer **Nick Merrick** was interviewed in the May issue of *The Journal of the American Institute of Architects*. The article was titled "Shoot the Moon," referring to his recent assignment to photograph the tallest building in the world, in Dubai. Merrick had plenty of advice to those aspiring to his heights, including "Make a pitch for history": "A photograph is the only representation of a building most people will ever actually see."

The award-winning film *Gasland* will be shown at the Center for Contemporary Art in Santa Fe on June 21, 7PM, followed by a panel with representatives of N.M. organizations opposed to "fracking." This battle is also being fought in the East now, but we would do well to keep informed. To support our own **Drilling Santa Fe**, which did such a great job in fending off Tecton in the Galisteo Basin, send checks to Drilling Santa Fe Fund, c/o Concerned Citizens of Cerrillos, POB 23921, Santa Fe, 87502.

Since late May, Galisteños have been carrying on a heated exchange of opinions about water and Commonweal's Galisteo Basin Preserve project in the pages of *The New Mexican*. It started with **Joette Trofimuk's** letter stating that if Eldorado was imposing water usage restrictions because the (unnamed) Lamy wells weren't producing, why was the County permitting Commonweal to sip out of "the same impaired aquifers"? She noted the protest in process by the Galisteo Water Association. **Ted Fleming** replied that Commonweal had spent over eight years meeting with Galisteo and three years trying to forge an agreement, showing "a deep commitment to the protection of the basin's water resources." Next, **Muriel Fariello** weighed in, agreeing that "cluster building is a good thing, just not here in the Galisteo Basin," and claiming that although Fleming is a member of the Galisteo Water Association Board, "he fails to place the interests of Galisteo residents above those of Commonweal, for which he has created artwork in the past." A Sunday "My View" by James Jenkins, president of the Eldorado Area Water and Sanitation District, then took Joette to task, noting that the Lamy wells are always irregular and had nothing to do with the new restrictions. And finally (to date) hydrologist Steve Finch of Albuquerque added a correction: "Contrary to Ms. Trofimuk's claim, there is no hydrological relationship between the primary aquifer at the Galisteo Basin Preserve and the aquifer associated with the El Dorado Water and Sanitation District supply wells near Galisteo Creek.... Her characterization of the county's review is incorrect as it ignores the careful and responsible scientific study that professional hydrologists have devoted to this community plan" (including the hydrologist hired for the Galisteo committee dealing with the Commonweal agreement.)

And there it stands, as we go to press... until the next round.

EARTH WORKS INSTITUTE EVENTS

Saturday July 9, 9:00-2:00: "**Stories of the Land**" - **Tracking Workshop in the village of Galisteo:** a family-friendly event in the wild (but no pets, please). 25 spaces available. Meet at the Community Center; *Order lunch* from EWI for \$10 or bring your own for a picnic and talk with our wildlife experts. EWI provides snacks and beverages. The hike is mostly on the flat, with a few brief steeper sections and spiny vegetation, so wear all-weather clothes and sturdy hiking boots, bring water, hat, sunscreen. **Suggested donation:** \$20 to cover our costs and pay our trackers. **RSVP and order lunch** online at <http://earthworksinstitute.org/event-registration>.

Monday July 11, 6:30-9:00 pm: "**Harvesting Water from the Sky!**" - **A Water Harvesting Workshop at Eldorado.** Call 982-9806 or info@earthworksinstitute.org for more information.

EL PUENTE SPONSOR: LIZ ROSE AND DAVID BURK

GALISTEO CLASSIFIED

ADS ARE FREE, AND FOR GALISTEO RESIDENTS ONLY. PLEASE CALL 466-1276 TO UPDATE, CHANGE, OR DELETE YOUR ADS. Next deadline: September 5th.

WANTED

House/dog sitter July 20-Sept. 2 (or Aug.22): perfect quiet place for writer or artist. Can pay something but not nightly rates: Lucy Lippard, 466-1276; flip14@wildblue.net.

FOR SALE

Talus Wind Meat CSA Shares available. Once a month Galisteco pick-up of NM grown lamb, beef, goat, eggs, and more! Full & Half shares available - reasonable prices. Contact Timothy at 501-4940; twichland@taluswindranch.com; for more info. <http://taluswindranch.com/meat-csa.html>.

SERVICES

We build and repair coyote fences; haul trash; yard work & other odd jobs. Fair prices, local references, Michael J. Anaya, 660-8920.

Pet and housesitting, watering plants, feeding animals, etc. Call Linda Jones, 466-6624.

Carpentry: Custom closets, hand-carved tables, benches, gates, doors; also electrical work. Ted Montoya, 466-1430 (messages).

Dragon Lady: Full Service Catering, Corey McGillicuddy, 660-1236.

Archival matting, reframing, thirty years experience. Sina Brush, 577-4045.

Massage in the comfort of your own home. Cathy Crelling, 490-2285.

Barbara King Pottery: functional and decorative, handcrafted with a variety of glazes on white stoneware. 466-3219.

Yoga: Enliven your body, refresh your mind! Small group classes and private sessions. Linda Braun, 466-8488.

Rocky Mountain Handyman. Can do anything! Call Mark Lyons, 629-9323.

Reliable home and yard care when you're away: mail collection, watering, security, etc. References available. Linda Braun, 466-8488.

Remodelling, additions in adobe and frame, mud plaster, stonework, metal lathe plaster, flagstone and building maintenance, Sina Brush, 577-4045.

Ginny Walden Fine Art, portraits, performing Flamenco guitar for events, **CHI-LEL Medical Qigong Master Teacher,** private sessions: 466-4913; ginnywalden.com.

Snowplowing driveways/roads, and rides to and from the airport: Paul Thompson, 660-2171. www.paulthompsonandassociates.com.

Computer tutor/personal assistant. Contact Paige, 466-1002.

MacTech Support and Tutoring, photo digitizing and organizing, and Photoshop lessons: Tom Martinelli, 466-1020.

Beth is available for **petsitting in Galisteco,** 470-7606.

Need a pet sitter or house sitter? I will do short or long-term care, occasional overnights, reasonable rates, refs. available. For info, call Maria, 466-8930.

White Dog Cyclery: Certified bicycle maintenance/repair. Your family bicycle service. All bikes, repairs. Call Frank, 466-2121.

Saturday Art Classes for children and adults, Retablos and watercolors. 10-12AM or 2-4PM, weekdays or weekends. Catherine Ferguson, 466-2765.

Common sense, gentle dog-training: house manners, management problem-solving at your home; also limited boarding. Twenty years experience. Call Evelyn, 466-1875.

Barbara Holloway Fine Handweaving scarves, shawls, vests, jackets, handwoven of luxurious chenille. 466-2118.

Linda Vista Stables: Beginner western riding for children and adults; 1-2 hr. trail rides; short-term boarding. 466-8930.

Passive Solar Builders: Locally owned general contractor since 1980. Quality home construction, renovations: 466-2118.

Like things done right? Welding, flagstone, moss rock, fountains, plumbing, sprinkler, and drip systems plus Gopher Control. David Maestas, cell 670-8608 or 660-9715.

Need a permit? Computer Aided Drafting Support for architects, engineers, contractors etc. Adan Cárdenas, 466-8967.

Galisteco Woodworks: for your custom woodworking needs. Furniture and furniture repair. Antonio Chavez, 466-3601.

SB Lejo/Sina Brush is taking special orders for antique Mexican furniture. Call 577-4045.

Dave's Auto Repair: restoring, minor repairs, painting. Local refs. Free estimates: David Montoya, 466-2097.

Nick Contreras: Landscaping, Brush Removal, Trash hauling, appliance pickup, move in, move out. Call 920-2521.

+++ EL PUENTE DE GALISTECO+++

Editor: Lucy R. Lippard. **Contributors:** Jan Saunders, Tom Martinelli. **EL PUENTE logo** by Cara Lee. **Printer:** Allegra. **Send letters, comments, suggestions, contributions to EL PUENTE, 14 Avenida Vieja, 466-1276. NEXT DEADLINE: SEPTEMBER 5. TO BE A SPONSOR: make out check to GCA for \$75, note "for newsletter," send to address above.**

El Puente de Galisteco
14 Avenida Vieja
Galisteco NM 87540