



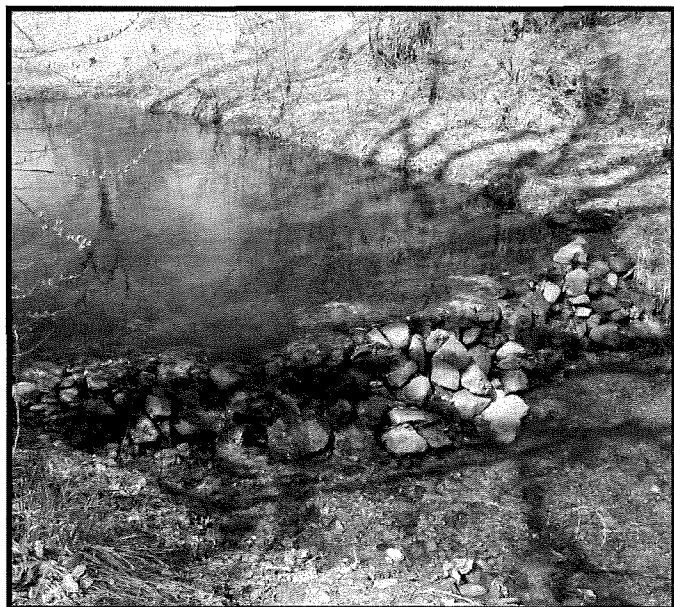
May 14<sup>th</sup>, 9-12: **COMMUNITY CLEAN-UP**; Meet for Coffee and donuts at Watts Park, bring work gloves. Garbage bags and hauling provided.

May 19<sup>th</sup>, 6:30: Meeting on **COUNTY SUSTAINABLE LAND DEVELOPMENT CODE**, Community Center (p.2).

May 20-21: **WESTERN PLEASURES WEEKEND**: Friday 20<sup>th</sup>, 4-7: La Sala Gala Opening Portal party. Sat. 21<sup>st</sup>, 4-9: Dinner Dance at Community Center (\$15 per person; \$25 couple) Food, Music, **FUNDRAISER** for La Sala. (See April *El Puente*, or call J. Wall, 466-3509, or J. Moya, 466-1544.)

June 5<sup>th</sup>, 9-3: **TOUR PUEBLO LARGO** (late 1200s to early 1400s) on the San Cristobal Ranch, with Friends of Archaeology at their 9<sup>th</sup> annual **CHILES AND SHERDS** event. Hike, enjoy a catered lunch and learn more about the Galisteo Basin's extraordinary cultural heritage with experts from the OAS (State Office for Archeological Studies). \$90 per person (\$70 is tax deductible); youth \$45. Limited to 150 guests. Order tickets from Lensic Box Office, 988-1234. Questions? 982-6366, ex. 112.

June 15<sup>th</sup>: **CLASSIC CAR CLUB/MINI STUDIO TOUR** (see p.2 for more information)



**“WHO KNEW?”** Charlie Holloway, at age 55, won a lottery to be one of the first people to snowboard (legally) at Taos Ski Valley in 2008.  
**NEXT: Who is baseball legend Connie Mack’s grand niece?**

**COMMUNITY CPR CLASS**

The Galisteo Volunteer Fire Department will be sponsoring a Community Heartsaver CPR class on **Saturday, June 18<sup>th</sup>, 9AM to 3PM**. CPR classes generally cost between \$40 and \$65 per participant. However the instructor fee for this class will be picked up by the GVFR as a way of giving back to the community. (Of course donations are always gratefully accepted.) The class is limited to ten participants. Should you be unable to attend, the Community College also offers very inexpensive CPR classes. **Call Isabella Gonzales, 466-2218.**

**Left: Stone Dam in the Creek**; whoever built this did the Rio Galisteo a favor. It slows floods and may even benefit the aquifer and household water supplies..

**Right: Thunderbird petroglyph, Galisteo Basin.** The vultures came late this year and there seem to be less of them around the village. Anybody know why?



## BLAST FROM THE PAST/MINI STUDIO TOUR

On June 15<sup>th</sup>, the Classic Car Club of America/Albuquerque Chapter is comin' thru town! There will be Packards, Hudsons, Studebakers and other classic vintage cars touring our village during their 9-day tour thru northern NM. They are stopping here to stop here to shop-- for ART. Twenty studios will be open from McKee Road into the village so take a stroll and take advantage of this Open Studio Day in June. Any open studio will have balloons or flags at their driveways.

There will also be a luncheon available at the Community Center from 11-1:30 hosted by Corey McGillicuddy/Dragon Lady Catering for \$15-- sandwich and salad bar, desserts and drinks too. Maps of the stops will be available at La Sala Gallery that morning. Sooo...Come on out and enjoy the ART IN JUNE!

Questions? Cindy Lux at [forbeslux@aol.com](mailto:forbeslux@aol.com).

## NM 41 MEETING

Consultant Dave Pennington and a number of representatives from the New Mexico Department of Transportation were at the Community Center May 3<sup>rd</sup> to inform the community about the latest plans for improvement of the NM 41 Corridor. (In fact it seemed there were more officials than Galisteo community members attending.) It was clear that our voices on several issues had been heard, although designation of NM 41 as a "major collector" will not change.

Pennington Associates' recommendations (not yet DOT decisions, though they will come soon) will improve sight distance on the whole 16-mile stretch from Clark Hill to 285, where there are no shoulders and no breakdown lanes. (These would have helped in this terrible fire season, since cars are igniting grass fires.) On Clark Hill there would be 12' lanes and 6' shoulders plus a better climbing lane on the hill itself. After the Rodeo Grounds and on the San Cristobal bridge there would be 12' lanes and 4' shoulders.

The "Community Core" -- beginning at Avenida Vieja, ending ¼ mile north of La Vega-- would have 11' lanes, 4' shoulders, and a 30mph speed limit, with pedestrian paths on the east side of the highway and across both bridges. It was pointed out that a walkway would bring the highway awfully close to the houses in the central village. Apparently this recommendation could be altered.

Roundabouts are not recommended, but medians, or "flared roads," are recommended north of the San Cristobal bridge and just north of the village before the hogback to between Vista Clara and Goose Downs. There would be another LED sign at the Rodeo Grounds.

Both bridges are dangerous for cyclists. Bicycle advocates at the meeting were pleased to hear that there would be a four-foot bike trail (the legal minimum), intermittent rumble strips in the 55 mph zone, and friction surfaces.

Both bridges are "structurally unsound." San Cristobal is the worst and will have to be totally replaced. Although at the last meeting it seemed possible that only the deck on the Galisteo bridge would be replaced, when concrete cores from the supports were tested, 7 of the 11 broke off; the 1936 aggregate

is way below what is required today; and the steel is old. So the rehabilitation option is no longer viable. ("You don't build a new house on an old foundation.")

Current options for the Galisteo Bridge include parallel bridges, keeping the old one as a walkway (as long as it is safe) and adding another one, which would require rebuilding the whole road. (It certainly seems possible to give the new bridge a similar "historical look"; parallel bridges would make a very wide and ungainly gateway to the village from the south.) A new bridge would be 19' wide (11' lane, 4' shoulder and 4' walkway on one side). The new San Cristobal bridge would be 20' wide. The load limits would be 20 tons.

Construction is tentatively set for 2012-2013 (spring 2013 for the bridges and 2015 for the roads), although funding is still uncertain. It has yet to be decided how the replacements would be accomplished -- possibly by building each bridge in halves so that one lane of traffic is always open. (Adding a temporary bridge means cutting down trees and more impact on the creek.)

There will be another public hearing after environmental assessment and "agency consultation"-- including the input of the State Historic Preservation Officer, the Army Corps of Engineers (which has jurisdiction over arroyos) and maybe US Fish and Wildlife, in case any endangered species are found.

Documents can be viewed at [nmshtd.state.nm.us](http://nmshtd.state.nm.us); click on "projects DOT." Comments can be submitted until May 20<sup>th</sup> by email to [dawn@dpenningtonassociates.com](mailto:dawn@dpenningtonassociates.com). Or by mail to D. Pennington & Associates, Inc. (Attn..NM 41), 6605 Uptown Boulevard NE, Suite 240, Albuquerque, NM 87110.

## PUBLIC PROCESS FOR SUSTAINABLE LAND DEVELOPMENT CODE

The Public Input Process for the Santa Fe County Sustainable Land Development Code begins with a series of meetings, including one in Galisteo, May 19<sup>th</sup> at 6:30 at the Community Center. The SLDC is the legal implementing device of the recently adopted Sustainable Growth Management Plan (SGMP) and contains detailed regulations for the development of land within the County. The success of the SLDC depends on strong public input, insuring that citizens are heard. This process is not initiated often. The original County Land Development code was passed in 1980 and updated in 1996. Development patterns and future growth locations impact everyone, city or county. The El Centro meeting on Wednesday, May 25 at the County Administration Building will be broadcast live with interactive communication at [www.santafecounty.org](http://www.santafecounty.org). Residents will be able to call or email in to the meeting to voice concerns, provide input and offer recommendations. Zoning, water, traffic, pollution, trails, open space, community planning, proximity of goods and services are all dependent on this code. Subdivisions, property improvements, home businesses, procedures and fees are also covered. For more information or to sign up to receive information on the SLDC contact Melissa Holmes at (505) 995-2717. Additional information available at [www.santafecounty.org](http://www.santafecounty.org) by clicking on Sustainable Land Development Code under Hot Topics.

## THEY SHOOT COYOTES, DON'T THEY?

Jan Saunders

Yup, they sure do. But, bring up the topic of predator control in polite conversation and you will surely hear more yips, yowls and even snarls from friends than you ever will from any self-respecting coyote pack.

According to the website for Animal Protection of New Mexico, the USDA's Wildlife Service kills an average of 6,000 coyotes a year, even though studies show that killing coyotes to decrease populations and reduce threats to new-born cattle, deer and antelope is not only scientifically indefensible and a waste of agency resources but is opposed by the general public. A memo from the New Mexico Department of Game and Fish in 2002 reported: "The coyote control strategies employed for the past 3 years in the designated high-priority deer units have proven inconclusive at best." The memo referred to a program costing \$230,000 in which 1,080 coyotes were trapped.

A recent article in *The Silver City Sun* in response to public outrage over a front page photo showing 5 coyote skins hanging on a fence, explains "... coyotes have about the same protection as mosquitoes." Truth is it is legal to kill coyotes 24/7 anytime, day or night, no limit, no season. The truth also is that studies confirm that as the removal rate of coyotes increases, so does the rate of immigration and number of reproducing females, thereby resulting in an overall increase of coyote numbers.

As far as my own personal safety and that of my two miniature Australian Shepherds, I don't worry too much about the former and lose a lot of sleep over the latter. My haphazard research tells me that coyote attacks on people in the US and Canada are extremely rare. Most attacks have been on children under 5 years of age. Sadly, a three-year old child was killed by a coyote in California in 1980. On the other side of the canine coin, over three million children are bitten by domestic dogs every year and more than 300 people were killed by those same family dogs between 1979 and the late 1990's. Clearly small pets left unattended outside in Galisteo are fair coyote game.

And so it is that as the sun sinks behind the Ortiz Mountains, we are left with nothing more certain than the overwhelming proof of Coyote's legendary ability to survive in spite of unrelenting opposition to his very existence. In his poem, *Coyote*, Baxter Black, cowboy poet and humorist, sums up the dilemma this way:

"So if you must describe him in terms  
Such as wily, and clever and keen  
You must also include homicidal,  
Sadistic, demented and mean."

## \*\* NO BURNING, NO SMOKING ESPECIALLY IN THE BOSQUE \*\*

Cigarette butts, beer cans, and campfire circles have been found in the Bosque recently, plus a young man whose truck got stuck as he tried to drive through the creek, and other tire tracks.

Please report anything dangerous that you see to the Fire Department or to 9/11.

## SHARE THE CARE:

### NEIGHBORS HELPING NEIGHBORS

Share the Care is a new community group offering temporary, short-term assistance to residents of Galisteo and Ranchitos in daily living tasks (assistance not already offered by the County/State) such as: caregiver relief, laundry, cooking, light housekeeping, errands, shopping, picking up prescriptions, help with paperwork, rides to appointments, emergency pet care,, computer help, light household repairs... or just a chat.

#### JUST ASK.

If you need help, please call one of the people listed below. Your requests remain confidential. Evelyn Gregory (466-1875); Liz Rose (466-6003); Deborah Samuel (466-4194); Barbara Pfeiffer (466-4966); Victoria Prewitt (466-6359); Nancy Helle (466-0204); Elayne Patton (466-9600); Wendy Chase (466-1004); Terry (Theresa) Vasquez (466-4615).

If you do not receive a return call within 12 hours, please call another name on the above list.

\*

Join up: if you are willing to occasionally volunteer your services for tasks others may not be able to do, please contact Victoria Prewitt at [vpencasa@hughesnet.com](mailto:vpencasa@hughesnet.com)

### GALISTEO IS HERE WHEN YOU NEED HELP

## PEDACITOS/BITS AND PIECES

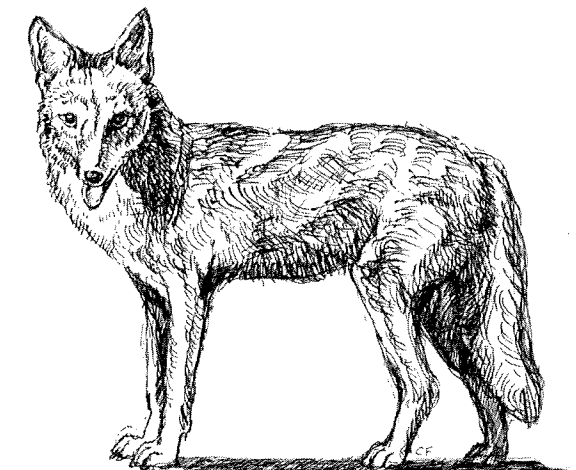
The Spanish Colonial Art Society has announced a major gift of "over 70 Mexican pieces," including tinwork and paintings on tin and copper, from former Galisteño **Ralph Tingle**. (**Heidi Tingle** has passed away). They will be on display in the upcoming Recent Acquisitions exhibition at the Spanish Colonial Art Museum in Santa Fe.

\*

Famous New Mexico writer Max Evans worked as "a 12-year-old cowboy on the **San Cristobal Ranch**, near Galisteo," and recalls, "It's so beautiful, I still think the San Cristobal is my own ranch." (*New Mexico Magazine*, 2/2011.)

\*

In March, former Galisteña **Valentine McKay-Riddell** had a signing at Collected Works in Santa Fe for her book *The River Goddess and Other Stories*.



Drawing by Catherine Ferguson

# EL PUENTE SPONSOR: SUSAN BOREN

## GALISTEO CLASSIFIED

**ADS ARE FREE, AND FOR GALISTEO RESIDENTS ONLY. PLEASE CALL 466-1276 TO UPDATE, CHANGE, OR DELETE YOUR ADS. Next deadline: June 10<sup>th</sup>.**

### FOR SALE

**Chicken Brooder Set** ("everything needed to raise chickens"): heat lamp, bulb, small feeder, feed, water: \$28, plus bedding and chicken wire. Pete Forbes, 466-1099.

**Talus Wind Meat CSA Shares available.** Once a month Galisteo pick-up of NM grown lamb, beef, goat, eggs, and more! Full & Half shares available - reasonable prices. Contact Timothy at 501-4940; [twichland@taluswindranch.com](mailto:twichland@taluswindranch.com); for more info. <http://taluswindranch.com/meat-csa.html>.

### SERVICES

**Ginny Walden Fine Art, portraits, performing Flamenco guitar for events, CHI-LEL Medical Qigong Master Teacher, private sessions:** 466-6913; [info@blueskyhealingarts.com](mailto:info@blueskyhealingarts.com).

**Snowplowing driveways/roads, and rides to and from the airport:** Paul Thompson, 660-2171. [www.paulthompsonandassociates.com](http://www.paulthompsonandassociates.com).

**Pet and housesitting, watering plants, feeding animals, etc.** Call Linda Jones, 466-6624.

**Carpentry:** Custom closets, hand-carved tables, benches, gates, doors; also electrical work. Ted Montoya, 466-1430 (messages).

**We build and repair coyote fences; haul trash; yard work & other odd jobs.** Fair prices, local references, Michael J. Anaya, 660-8920.

**Dragon Lady: Full Service Catering,** Corey McGillicuddy, 660-1236.

**Archival matting, reframing,** thirty years experience. Sina Brush, 577-4045.

**Massage in the comfort of your own home.** Cathy Crelling, 490-2285.

**Barbara King Pottery:** functional and decorative, handcrafted with a variety of glazes on white stoneware. 466-3219.

**Yoga:** Enliven your body, refresh your mind! Small group classes and private sessions. Linda Braun, 466-8488.

**Rocky Mountain Handyman.** Can do anything! Call Mark Lyons, 629-9323.

Reliable **home and yard care** when you're away: mail collection, watering, security, etc. References available. Linda Braun, 466-8488.

**Remodelling, additions in adobe and frame, mud plaster, stonework, metal lathe plaster, flagstone and building maintenance,** Sina Brush, 577-4045.

**Computer tutor/personal assistant.** Contact Paige, 466-1002.

**MacTech Support and Tutoring,** photo digitizing and organizing, and Photoshop lessons: Tom Martinelli, 466-1020.

Beth is available for **petsitting in Galisteo,** 470-7606.

**Need a pet sitter or house sitter?** I will do short or long-term care, occasional overnights, reasonable rates, refs. available. For info, call Maria, 466-8930.

**White Dog Cyclery:** Certified bicycle maintenance/repair. Your family bicycle service. All bikes, repairs. Call Frank, 466-2121.  
**Saturday Art Classes for children and adults,** Retablos and watercolors. 10-12AM or 2-4PM, weekdays or weekends. Catherine Ferguson, 466-2765.

**Common sense, gentle dog-training:** house manners, management problem-solving at your home; also limited boarding. Twenty years experience. Call Evelyn, 466-1875.

**Barbara Holloway Fine Handweaving** scarves, shawls, vests, jackets, handwoven of luxurious chenille. 466-2118.

**Linda Vista Stables:** Beginner western riding for children and adults; 1-2 hr. trail rides; short-term boarding. 466-8930.

**Passive Solar Builders:** Locally owned general contractor since 1980. Quality home construction, renovations: 466-2118.

**Like things done right? Welding, flagstone, moss rock, fountains, plumbing, sprinkler, and drip systems plus Gopher Control.** David Maestas, cell 670-8608 or 660-9715.

**Need a permit? Computer Aided Drafting Support** for architects, engineers, contractors etc. Adan Cárdenas, 466-8967.

**Galisteo Woodworks:** for your custom woodworking needs. Furniture and furniture repair. Antonio Chavez, 466-3601.

**SB Lejo/Sina Brush** is taking special orders for antique Mexican furniture. Call 577-4045.

**Dave's Auto Repair:** restoring, minor repairs, painting. Local refs. Free estimates: David Montoya, 466-2097.

**Nick Contreras: Landscaping, Brush Removal, Trash hauling, appliance pickup, move in, move out.** Call 920-2521.

## +++ EL PUENTE DE GALISTEO+++

**Editor:** Lucy R. Lippard. **Contributors:** Jan Saunders, Tom Martinelli. **EL PUENTE logo** by Cara Lee. **Printer:** Allegra. **Send letters, comments, suggestions, contributions to EL PUENTE, 14 Avenida Vieja, 466-1276. NEXT DEADLINE: JUNE 10. TO BE A SPONSOR: make out check to GCA for \$75, note "for newsletter," send to address above.**

El Puente de Galisteo  
14 Avenida Vieja  
Galisteo NM 87540