



ISSUE #144

APRIL 2011

COMMUNITY CLEAN-UP, MAY 14th, 9-3; Meet for Coffee and donuts at Watts Park, bring work gloves. Garbage bags and hauling provided. Check later for possible changes.

DID YOU SEE IT?

On March 19th, the rare "super perigee" full moon rose at sunset. "The last full Moon so big and so close to Earth occurred in March of 1983," according to Geoff Chester of the U.S. Naval Observatory. Full moons vary in size because of the oval shape of the moon's orbit. It is an ellipse with one side (perigee) about 50,000 km closer to Earth than the other (apogee). Nearby perigee moons are about 14% bigger and 30% brighter than lesser moons that occur on the apogee side of the Moon's orbit, "The full Moon of March 19th occurs less than one hour away from perigee -- a near-perfect coincidence that happens only 18 years or so," adds Chester.

Contrary to some reports, perigee moons do not trigger natural disasters. The "super moon" of March 1983, for instance, passed without incident. And an *almost*-super Moon in December 2008 also proved harmless. A perigee moon brings with it extra-high "perigean tides," but only a few centimeters (an inch or so) higher than usual.

It's tricky to tell just how large this moon is. There are no rulers floating in the sky to measure lunar diameters. (*Cont. p.2*)

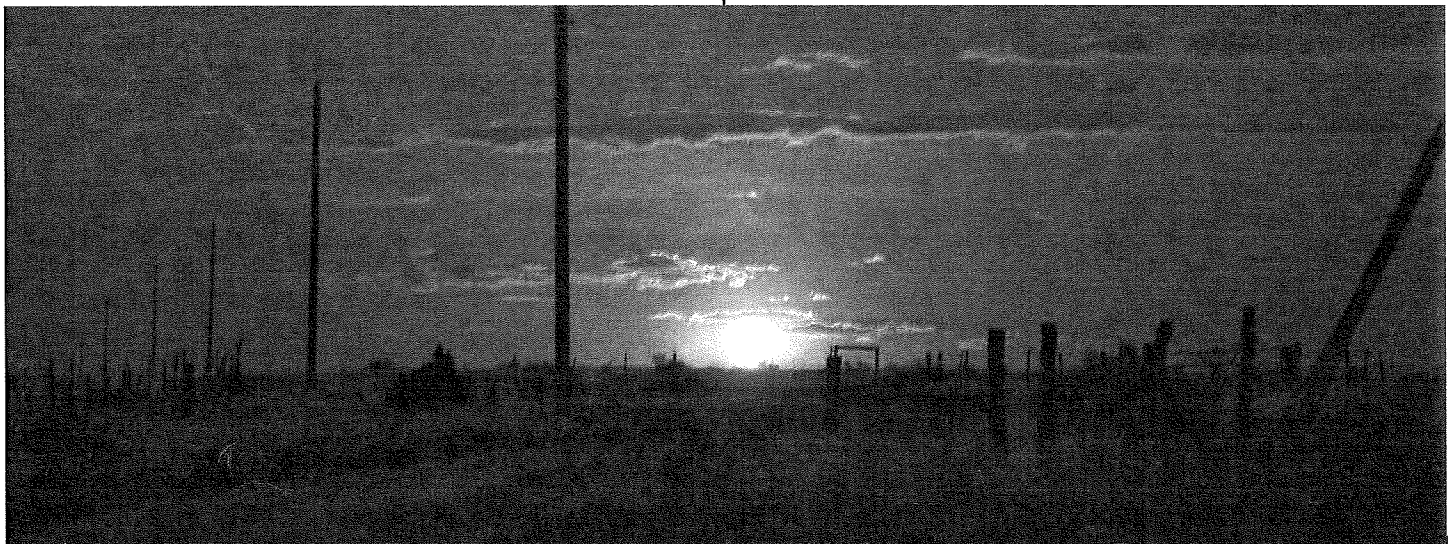
"WHO KNEW?" Barbara Seiler modeled as a "tan-pearl blonde" for Clairrol's hair shows.

NEXT: Who won a lottery to be one of the first people to snowboard (legally) at Taos Ski Valley in March 2008, at age 55?

WESTERN PLEASURES WEEKEND IN GALISTEO

Friday May 20th, 4-7pm: La Sala Gallery Gala Opening PORTAL PARTY. Music and munchies."Western Pleasures" exhibition showcasing many art media --photography to jewelry, pottery and weavings. Most of the art is donated to La Sala's Building Fund. We hope for great sales to continue with the dance hall's restoration. Come out, enjoy the guitar music, reconnect with your neighbors for the season. If anyone is interested, we'll give tours of the building. Questions? Janice Wall, 466-3509.

Saturday May 21, 4-9pm:"Western Pleasures DINNER DANCE at the Community Center, Flamenco Guitar by Ginny Walden, 4-5pm, followed by a fabulous Western Buffet of 'Build Yer Own Frito Pie', red and green chiles, and 'you name it' side dishes! Western dance music by "Western Pleasures Band" from 5-8, plus other entertaining activities This is a fund raising night, \$15 per person, or \$25 per couple...See you there!! Questions? Jean Moya, 466-1544.



(MOON) Hanging high overhead with no reference points to provide a sense of scale, one full Moon can seem much like any other. For reasons not fully understood by astronomers or psychologists, low-hanging Moons look unnaturally large when they beam through trees, buildings and other foreground objects, producing the "moon illusion." The swollen orb may seem so near that you can almost reach out and touch it. Don't bother. Even a super perigee Moon is still 356,577 km away. That is, it turns out, a distance of rare beauty. The best time to look was when the Moon is near the horizon, when illusion mixes with reality to produce a truly stunning view.

(Source: revised from the Internet, thanks to Evelyn Gregory.)

Photo: Tom Martinelli

NO BURNING!

Wayne King, Captain, Galisteo Volunteer Fire District

Due to the lack of moisture in the soil and the continuous high winds, the County Commissioners have decreed that there shall be no outdoor burning starting April 12 and continuing for at least 30 days. If there is no improvement at the end of 30 days, the ban will probably be extended for another 30 days. This includes all open fires such as brush burnings, pit fires, camp fires, ceremonial fire walks, and Fire Department live trainings. Burn permits will not be issued by the GVFR during this time.

The Galisteo Fire Department has been concerned about the "fuel load" in the bosque, which is full of trees of all sizes and tall grass along the edges. At least two camp fire sites have been seen by people walking in the bosque. We are especially concerned that seemingly dead but actually live embers from fire sites could be stirred up by wind and could start a fire in the bosque. An intense fire in the bosque could spread airborne embers onto roofs of houses throughout the village. Everyone who lives along the bosque or walks in the bosque should watch out for any fires down there. Whether or not a fire is being tended, please call 911 so that the Fire Department can be paged out and sent to the fire with the equipment and water needed to put it out properly.

Everyone also needs to be alert to everyday practices that can start fires in the unusually dry vegetation that we currently have. A recent brush fire in Hondo was started by a backyard welding operation. The Sevilleta fire near Belen was caused by someone grinding metal. The brush fire that burned down several houses near Silver City was started by a hot catalytic converter.

If you need to work with tools near grass or brush, the perimeter of the work area should be watered down. Vehicles should not be parked in tall grass. Tall grass and combustible shrubs and trees within 50 feet of buildings should be mowed or cut down. Except for the relatively small brush fire in Hondo a few weeks ago, we have been lucky that we haven't had the types of fires in our area that seem to be occurring on a daily basis in the southern half of the state. BE CAREFUL!

CORRECTION to March *Pedacitos*: The COLTPAC purchase tabled by the BCC was 160 acres offering public access to 2200 acres on BLM land; negotiations are continuing, public support is welcome.

FROM THE FIRE DEPARTMENT

Galisteo Volunteer Fire and Rescue is presently seeking new volunteers, so if you ever had the slightest inclination to participate, now's a good time to investigate further. The County offers training to volunteers in diverse areas such as emergency vehicle operation, wildland firefighting, emergency medical services, structure firefighting, swiftwater rescue, and the list goes on.

Participating in GVFR activities is a way to provide a useful service to the community while expanding personal horizons. Many volunteers have day jobs so that in itself shouldn't stop you. The person who directs traffic at a motor vehicle accident on NM41 is just as important to the operation as someone who is operating equipment to cut a patient out of that vehicle, and you can learn to do any or all of it. This is a great opportunity to find out about yourself and your community, so please don't hesitate to contact Jean Moya (GVFR Chief) jmoya@sfcfire.net if you want to learn more. We meet at the Galisteo Fire Station Tuesdays at 6:30 pm.

PEDACITOS/BITS AND PIECES

Galisteo bids farewell but not goodbye to **Linda Rice**, her daughter **Gracie**, and Native Bloom Landscaping. Having lived here all Gracie's life and a hunk of Linda's (since 1991), they have moved to Santa Fe, but their address has barely changed: their new house is on Paseo Galisteo just off Old Galisteo Road.

Denice Pruett's "Too Hot for Spot" product was awarded the "Keep Doggie Safe Seal of Safety." And thanks from all of us, on behalf of our furry pals. Her invention will save lives.

When LA photographer Michael Light was interviewed in *Pasatiempo* (4/1) about his new book on Radius, he said "I like Galisteo as much as anyone else, but I think it's interesting [to see it from the air] and see how it's been torn to pieces, loved to death. On the ground I want to stroll among those lovely oaks by the river, but up above I can pick out which billionaire has done what to the landscape." (Both oaks and billionaires obviously need to be seen up closer; they might turn out to be cottonwoods and impecunious artists?)

The film that has been shot for the last few weeks at the **Silverado movie set** on the Cerro Pelon Ranch is a pilot for a TV series called *Reconstruction*, about post-Civil War Missouri. A controlled burn took place successfully on the set in early April, thanks to the GVFR.

In a "My View" in *The New Mexican* (4/3), **Nick Merrick** argued that "the deficit-reduction conversation taking place... is misguided at best" and that "if we really want to do something that will actually help our country and make a difference for our children and grandchildren, we must cut defense spending now."

Former Galisteña **Tricia Tusa's** new book *Follow Me* (Harcourt Children's Books) has been described as "a glorious meditation on light, color and home for even the smallest child."

Linda Durham was briefly reported missing in Burma/Myanmar, where there was a major earthquake at the end of March, but she surfaced in good health at a hotel on the other side of the country.



COYOTE GODS AND LEGENDS

Jan Saunders

The ancient Aztecs named Coyote ("coyotl") after two important gods, "Coyotlinauatl," whose worshippers wore coyote skins, and "Coyolxauhqui," whose name meant "bayer-at-the-moon." The Navajo, considering Coyote the smartest of all animals, credit him with placing the stars across the great vault of heaven. Terry Tempest Williams, in her book *Red*, recounted the Navajo belief that Coyote walks among us with fluffy tail tucked discreetly in jeans or under skirts. Whatever the disguise, Coyote is always with us, rattling the figurative door knob, checking for chicken coops left unguarded, cats allowed to stay out after dark, unwanted apples in the orchid and bowls of unfinished dog kibble on the back steps. I like to imagine that Coyote sings the sweetest under a full moon to tempt the shadow of the rabbit to leave the safety of the lunar surface and come down and play. (Drawing by Catherine Ferguson.)

STARTING WITH A BANG AND A THWACK!

Cindy Lux, La Sala de Galisteo Board

On Saturday, April 9th, an energetic bunch of Galisteans took out their winter frustrations on the old stone wall at La Sala de San José. John Masee and Antonio Chavez wrestled the vintage metal railing off its posts and it has a new temporary home at John's metal workshop for much-needed repairs. Then came the mighty blows of Mark Lyons and his Thor-like hammer swings. "He's like a god with that thing!" remarked an observer.

Stone by stone, the unsafe and crumbling 50-year-old wall met its match with neighbor after neighbor removing and storing the old stones off to the side for the eventual rebuilding of a new wall. After two hours of lugging and piling in 30 mph winds, the job was done!

Inside La Sala, water-logged plaster walls compromised by leaking canales were cleaned up, adobes and mud were scraped and swept by Julia Cairns and darling son Oliver. The entire room was then shop-vacced by face-masked Anna and Freddie Cárdenas.

The dance hall once again looks great! What an impressive space this will be, and what a great day it was to see new life breathed into the sad, old, suffering space. Sociedad members Anthony, Norman and Steve Burns and Joe Anaya all looked literally tickled. Many of us working regularly on this restoration thought this day might never come...but here it is. Still much needed funds yet to come from fund-raising efforts, events and surprise benefactors. Thank you all for your help. It seems that it DOES take a village! And what a fabulous one we have.

ANNUAL GCA MEETING AND ELECTIONS

Roger Taylor, Secretary

The Annual Membership Meeting and Board elections of the Galisteo Community Association were held at 6:30 on March 23rd at the Community Center. By 7:00, a full quorum of thirty members was finally met.

First up were nominations and voting to fill vacant seats on the Board. Congratulations to Matthew McQueen who was re-elected, to Frank Hirsch and Debra Samuel who were newly elected, and to Joette Trofimuk and Beth Foote as Alternates.

Next, Matthew McQueen presented a short overview of changes being proposed to the GCA By-Laws, which had not been updated since 1996. They were re-written to simplify and clarify provisions. The following changes were approved:

*A requirement of 2 membership meetings per year was changed to one meeting per year and additional meetings as needed.

*Board membership was changed from nine Directors to nine Directors plus two Alternates (who will attend Board meetings, vote as needed in the absence of other Directors at regular meetings, and be prepared to move into a vacant Director position as needed).

*Term-Limits were changed from open-ended to two 2-year terms.

*Community, indemnification, and insurance coverage are provided for the Board.

*Community service committees were established and will report to the Board.

Sign-up sheets for the following proposed committees were posted on the walls:

Share the Care: outreach to those who may need some assistance from time to time with home tasks, errands, etc.

Youth Activity Group: working with the youth of Galisteo to identify and support their interests.

Watts Park & GCC Gardens: planting, maintaining and planning for these two village areas.

GCC Building Repairs & Maintenance: ongoing care and upkeep of our Community Center.

Following the April Board meeting, a more detailed email will be sent out to the community about these committees, who is on them, and volunteer opportunities. Anyone who was unable to attend the meeting and is interested in one of these groups, please contact Roger Taylor at 505-466-3469 or rtaylor503@aol.com.

In closing, Jan-Willem Jansens gave a 10-minute overview of a new Earth Works Institute initiative to restore a significant portion of the Galisteo Creek, especially along the Village bosque. This activity will focus on repairing bank erosion, remove blockages caused by creek bank collapses, remove Russian Olive trees and shrubs that block stream flow and replace them with local Willows, etc. More information will be forthcoming.

Finally, the Board would like to kick-off the first **Saturday morning coffee and book exchange** of 2011. Are there two or three people who would like to choose a date and host the first one? If so, please contact Anna Cárdenas or Roger Taylor.

(Cont. p.4)

Please remember that all Board meetings have a «Public Forum» on the Agenda, whereby members of the community may introduce subjects they would like to propose and/or discuss. Should you wish to speak at a Board meeting, or introduce a subject for discussion, please contact our Board President, Anna Cardenas (505-466-8967 or annacardenas@dishmail.net). The next Board meeting will be April 20 at 7:00 PM.

EL PUENTE SPONSORS LINDA RICE AND GRACIE

GALISTEO CLASSIFIED

ADS ARE FREE, AND FOR GALISTEO RESIDENTS ONLY. PLEASE CALL 466-1276 TO UPDATE, CHANGE, OR DELETE YOUR ADS. Next deadline: May 10th.

FOR SALE

Chicken Brooder Set (“everything needed to raise chickens”): heat lamp, bulb, small feeder, feed, water: \$28, plus bedding and chicken wire. Pete Forbes, 466-1099.

SERVICES

Ginny Walden Fine Art, portraits, performing Flamenco guitar for events, **CHI-LEL Medical Qigong Master Teacher**, private sessions: 466-4913; ginnywalden.com.

Snowplowing driveways/roads, and rides to and from the airport: Paul Thompson, 660-2171. www.paulthompsonandassociates.com.

Pet and housesitting, watering plants, feeding animals, etc. Call Linda Jones, 466-6624.

Carpentry: Custom closets, hand-carved tables, benches, gates, doors; also electrical work. Ted Montoya, 466-1430 (messages).

We build and repair coyote fences; haul trash; yard work & other odd jobs. Fair prices, local references, Michael J. Anaya, 660-8920.

Dragon Lady: Full Service Catering, Corey McGillicuddy, 660-1236.

Archival matting, reframing, thirty years experience. Sina Brush, 577-4045.

Massage in the comfort of your own home. Cathy Crelling, 490-2285.

Barbara King Pottery: functional and decorative, handcrafted with a variety of glazes on white stoneware. 466-3219.

Yoga: Enliven your body, refresh your mind! Small group classes and private sessions. Linda Braun, 466-8488.

Rocky Mountain Handyman. Can do anything! Call Mark Lyons, 629-9323.

Reliable **home and yard care** when you're away: mail collection, watering, security, etc. References available. Linda Braun, 466-8488.

Remodelling, additions in adobe and frame, mud plaster, stonework, metal lathe plaster, flagstone and building maintenance, Sina Brush, 577-4045.

Computer tutor/personal assistant. Contact Paige, 466-1002.

MacTech Support and Tutoring, photo digitizing and organizing, and Photoshop lessons: Tom Martinelli, 466-1020. Beth is available for **petsitting in Galisteo**, 470-7606.

Need a pet sitter or house sitter? I will do short or long-term care, occasional overnights, reasonable rates, refs. available. For info, call Maria, 466-8930.

White Dog Cyclery: Certified bicycle maintenance/repair. Your family bicycle service. All bikes, repairs. Call Frank, 466-2121.

Saturday Art Classes for children and adults, Retablos and watercolors. 10-12AM or 2-4PM, weekdays or weekends. Catherine Ferguson, 466-2765.

Common sense, gentle dog-training: house manners, management problem-solving at your home; also limited boarding. Twenty years experience. Call Evelyn, 466-1875.

Barbara Holloway Fine Handweaving scarves, shawls, vests, jackets, handwoven of luxurious chenille. 466-2118.

Linda Vista Stables: Beginner western riding for children and adults; 1-2 hr. trail rides; short-term boarding. 466-8930.

Passive Solar Builders: Locally owned general contractor since 1980. Quality home construction, renovations: 466-2118.

Like things done right? Welding, flagstone, moss rock, fountains, plumbing, sprinkler, and drip systems plus Gopher Control. David Maestas, cell 670-8608 or 660-9715.

Need a permit? Computer Aided Drafting Support for architects, engineers, contractors etc. Adan Cárdenas, 466-8967.

Galisteo Woodworks: for your custom woodworking needs. Furniture and furniture repair. Antonio Chavez, 466-3601.

SB Lejo/Sina Brush is taking special orders for antique Mexican furniture. Call 577-4045.

Dave's Auto Repair: restoring, minor repairs, painting. Local refs. Free estimates: David Montoya, 466-2097.

Nick Contreras: Landscaping, Brush Removal, Trash hauling, appliance pickup, move in, move out. Call 920-2521.

+++ EL PUENTE DE GALISTEO+++

Editor: Lucy R. Lippard. **Contributors:** Jan Saunders, Tom Martinelli. **EL PUENTE logo** by Cara Lee. **Printer:** Allegra. **Send letters, comments, suggestions, contributions to EL PUENTE, 14 Avenida Vieja, 466-1276. NEXT DEADLINE: MAY 10. TO BE A SPONSOR: make out check to GCA for \$75, note “for newsletter,” send to address above.**

El Puente de Galisteo
14 Avenida Vieja
Galisteo NM 87540



Product of New Mexico

2011 MEAT CSA KICKOFF!

Talus Wind Ranch Heritage Meats to offer
Meat & Poultry CSA Shares Summer 2011!

How would you like to eat locally produced lamb, beef, goat & turkey? Talus Wind Ranch Heritage Meats, of Galisteo, will be offering CSA (Community Supported Agriculture) shares this summer.

WHAT IS A CSA SHARE?

A CSA share is, in essence, an informal partnership between community members and local farmers. The Community Supported Agriculture (CSA), movement is alive & well, with CSA farms in every US state! Although every CSA is different, the common aspect is: families/individuals purchase a "share" up front and in return, they will receive a portion of "their" farm's bounty, for a specified duration. In Talus Wind Ranch's case, local folks can purchase a meat share (either 10 OR 20 lbs. of meat/month + 1 Thanksgiving turkey) and in return, you will receive a monthly supply of locally & humanely raised meat & poultry products, for several months. Why purchase a share up front? It is part of the CSA model: in essence your dollar goes directly towards supporting Talus Wind Heritage Meats ranchers and other local producers. Purchasing a share also helps to offset the costs/risks associated with local farming, while ensuring you a **monthly supply of wonderful, local, meat products.**

MEAT CSA KICKOFF!

This is a completely new program we are starting, and the first CSA devoted to meat in the greater Santa Fe area! We would like to offer sample shares to the village of Galisteo. The CSA Kickoff will be a one month "share" of locally raised lamb, beef, turkey, & goat. You will get a variety of products & cuts to enjoy. All meat is Cryovac'ed (vacuum sealed) and frozen to maintain the utmost freshness, and will last for months in your freezer. After enjoying this kickoff share, you will then have the opportunity to sign up for a 6 month meat share!

THIS IS JUST THE BEGINNING!!!

Talus Wind Ranch will be offering Meat CSA shares starting in July. As time progresses we anticipate offering Thanksgiving Turkeys, Chicken, Pork, Eggs, Goat, other animal products, and produce. We also hope to turn the pick-up event into a "mini-farmer's market," with food and crafts available from the local community. Our long range goal is to enhance the Galisteo community - around our food supply....locally grown that is!!!

WWW.TALUSWINDRANCH.COM

(505) 982-7782

MEAT CSA KICKOFF SHARE

- 1 MONTH'S WORTH OF LOCAL LAMB, BEEF, GOAT, + 1 HERITAGE TURKEY
- **TWO SHARE SIZES AVAILABLE:**
 - FAMILY SHARE (20 LBS) MEAT & 1~14+ LB. TURKEY)
 - HALF SHARE (10 LBS. MEAT & 1~9-12 LB. TURKEY)
- ALL MEAT IS NORTHERN NM RAISED, GRASS-FED, AND PROCESSED
- ENJOY A VARIETY OF CUTS FROM STEAKS, ROASTS, RIBS, CHOPS, GROUND & STEW MEAT, + 1 TURKEY!
- INFORMATION ABOUT FARMING, VARIOUS MEAT CUTS & RECIPES
- 1-TIME LOCAL PICK-UP, WITH OPTION TO SIGN-UP FOR 6 MONTH SHARE!

"Talus Wind Ranch's meat is an authentic example of the superb, mildly aromatic flavor of natural Southwestern meat. Whether our local meat is slow roasted, braised in wine with vegetables or grilled, Talus Wind Ranch's meat is a year-round delight!"

HOW DO I SIGN UP?

Simply contact CSA coordinator Timothy Wichland (contact info below) to reserve a share. **A limited number of shares are available** so call/email today to reserve your Meat CSA Kickoff Share.

Your Meat Share will be available for **pick-up at the Galisteo Community Center in early May**...no further commitment is necessary. We will contact you with pick-up times & date.

You will enjoy the peace of mind that the food you are eating was raised by local, hard-working farmers. The animals eat a traditional grass-fed diet and are raised without growth hormones, without harmful chemicals, without feedlots, and WITH love.

CONTACT INFORMATION

Timothy Wichland, CSA coordinator
P (505) 501-4940
E twichland@taluswindranch.com