

**EL PUENTE'S PLEAS ANSWERED!**

Despite urgings from some community members to put EL PUENTE on line and save a lot of time and money, your editor is old-fashioned and was loath to do so, especially since everyone is not on the Internet. We were saved by donations from Moira Walden, Romona Scholder, and a very generous one from Woody and Dianna Gwyn, which ensures a newspaper for the next year and more.

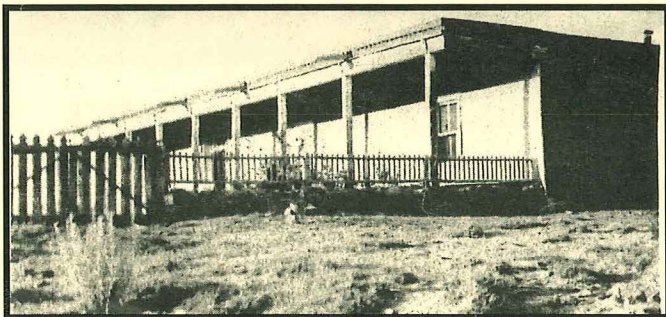
**MANY HEARTFELT THANKS**

**THE PEÑA DE CHAVEZ HOUSE, 1880**

*Mae Peña Delgado was Remy Chavez's sister; this text was taken from what is possibly a memoir by her sister Pablita (with thanks to Antonio Chavez, who is not related to the Chavezes in this story, but is a descendant of the Peñas).*

"The year is 1941 in the small town of Galisteo, New Mexico," when the Chavez hacienda on the east side of the Creek (now a barely perceptible ruin northeast of Ramona Watts' house), is being dismantled for incorporation into Rancho de San Sebastian on the Old Las Vegas Highway, built by the painter Fremont Ellis, with materials from the Pedro Ortiz y Pino hacienda on Avenida Vieja as well as from the Chavez house. (See EL PUENTE # 60, Dec. 2002 and #61, Jan 2003.)

"A 21 year old woman named Mae Peña stood and watched the house being dismantled...It had belonged to her aunt and uncle, her father was a carpenter who had helped to build the house, and Mae had spent many happy hours within its walls... When Mae was growing up, Galisteo had a population of only around 250 people and everyone had to make up their own entertainment...The large hall, which was equipped with a Victrola and a piano, was used as a recreation hall and a place for people in Galisteo to gather."



Answer to last month's "What Nobody Knows About Us": **ISABELLA GONZALES** had one grandmother who was a Flamenco dancer and another who was a midwife.

**NEXT: Who was tear-gassed at the 1968 Democratic Convention in Chicago?**

\*

**CORRECTIONS: John Fitch's correct birthdate was 12/24/1936. And we misnamed the gallery where Patrick McFarlin showed; it is LAUNCHPROJECTS.**

The house was built around 1880 for Mae's uncle and aunt, Apolonio and Luz Peña de Chavez. "Fourteen children had been born in the house and many ghosts remained. In her mind's eye she pictured the front door and the long hall...the four large bedrooms, each with its own fireplace. On the right side of the hall was the parlor [which] brought you into the large dining room with the kitchen to the left in a wing all its own.

"The Chavez family was an important one in the area with large sheep and cattle breeding operations that went on for many years. Mae could remember the sheep being brought in from far grazing areas to be sheared near the hacienda and she remembered feeling sorry for the poor naked-looking sheep after shearing. Mae's happy childhood memories also included gathering eggs from the chicken coop and running in and out of the Chavez home as if it were her own. The thick adobe walls, the high windows, and the protective wall projected a feeling of security and permanence."

"All this changed in 1935" when Mae's uncle Apolonio died. His wife moved in with their only living daughter in Albuquerque and for five years the house stood empty. In 1940 she was forced to sell it for taxes. "It was an extremely sad day for Mae Peña as she watched the dismantling of so many memories. The family was not only sad, but shocked when they heard how little the house had sold for...only \$300, the amount of the taxes due. It had been sold to a Santa Fe artist, Fremont Ellis... Ironically, she knew the Ellises quite well. When Mae was in her teens the death of her father had meant that she had to quit school and find a job. The job she found was in the Ellis household."

The pictures that accompanied this memoir showed a sprawling L-shaped home with a long portal and a picket fence around the raised front yard, filling in the rectangle, with the kitchen wing at the left, and an *horno* for baking bread in front.





Fall comes to the Galisteo Creek (photo: Tom Martinelli)

### NAMES ON THE LAND III

Father Thomas J. Steele has suggested that naming places was "an interesting strategy" for dealing with wilderness. The New Mexican Spanish gave names to natural locations, "thereby elevating them from the natural world [and the Pueblo world] into their Spanish cultural world." In the old days, every field and landscape feature had its own moniker, most of them lost today. For instance, in the 19<sup>th</sup> century, what we now call the San Cristóbal Arroyo was Arroyo Atascoso (boggy), which may have been a reference to quicksand.

Another Galisteo name came up in the news recently when drug cartels murdered a mayor in the Mexican town of Tacubaya. I've been told that the 19<sup>th</sup> century land grant just to the east of Galisteo village was named Tacubaya by a Mexican woman who had come from there. Surrounding and overlapping that grant was the Cadial (or Cadillal) which means cocklebur pasture. Both grants in turn overlapped the San Cristóbal or Eaton Grant. Disentangling these claims took up a great deal of money and court time in the early 20<sup>th</sup> century but definitive decisions appear never to have been handed down.

### GALISTEO SURFACE WATER QUALITY

On Oct. 7, a meeting was held at the new Hondo Fire Station by the Surface Water Quality Bureau of the New Mexico Environment Department. The purpose of the meeting was to request input and information from "residents knowledgeable about these waters." (Three Galisteo residents attended.) Deby Sarabia led the discussion and three other members of the wetland standards team were also present.

The main question was whether or not the current designation of "high quality coldwater" for the "very precious" perennial reaches of the Galisteo Creek was accurate. It seemed not to be "attainable" for "aquatic life use" (including the tiny Flathead Chub fish; fishing and swimming are other uses), since the temperatures were well over the 20 degrees required. This can be lowered by planting trees, among other actions. Air temperature is the main driver of water temperatures and global warming may be a factor. Pollution, including e-coli from overflowing septic tanks and nitrates from livestock, are other concerns.

There are arcane criteria for this designation, which is required by the Clean Water Act, and it looked as though the Galisteo would be "downgraded," to "cool," which sounded like a threat to some attendees. The staff responded that it was simply a matter of being accurate as to "what nature can provide." Correct categorization results in the best use of resources. It may also be possible to restore the standards to the "coldwater" point if there is enough evidence. If the Galisteo is reclassified there might be more money for restoration.

The Galisteo is "perennial" and also "intermittent" and "ephemeral" in various places. Perennial reaches must be located using maps, literature, and local lore. Three have been identified so far. (It's "perennial" even if it only flows in the spring for around 500 yards.) There are around four eco-regions along the Creek. There was a summer monitoring station under the NM 41 Galisteo bridge.

Historical conditions also come into play. Once there was a trout fishing resort near Cerrillos. A man attending the meeting who works for Kewa (Santo Domingo) Pueblo noted the pueblo had become a model for restoration. They want to raise trout. Tor Sigstedt from Ojo de la Vaca has also stocked his stretch of the river with trout and is convinced that the Galisteo is or can be a coldwater creek.

The Water Quality Bureau is in touch with Earth Works Institute, which has been awarded a \$350,000 grant to deepen and clean the Creek and deal with Salt Cedar.

Deby Sarabia can be contacted at 505-827-0417 or at [deborah.sarabia@state.nm.us](mailto:deborah.sarabia@state.nm.us).

### THE LAST DROPS

Some 42 million U.S. homes do not have a dishwasher. If all of those households used the fill-the-sink method instead of letting the tap run, Americans could save as much as 100 billion gallons of water annually. Santa Fe permaculturist Nate Downey has published a book, *Harvesting the Rain*, which covers various ideas about harvesting water from roofs and in domestic landscapes. "You have to do a little bit each year," he cautions. "The key is not to be overwhelmed with the work ahead but to do it in phases. Do gray water one year. Do swales one year. Do cisterns one year...harvesting the rain is fun."

### NOV. 15: DEADLINE TO COMMENT ON FLYOVERS

Public comments on the environmental impacts of Cannon Air Force Base training exercises over northern New Mexico are due Nov. 15. Among local residents' concerns are damage to old adobe buildings and the possibility of triggering Post Traumatic Stress Disorder symptoms in veterans. Mainly, objections are to ambient destruction of dark, quiet, rural places, although the Cannon representative insists that "if you hear us or see us, we have failed."

Comments should be sent to Cannon AFB Public Affairs Office, 110 E. Sextant Ave., ste. 1150, Cannon AFB, NM 88103; or e-mailed to [27SOWpublicaffairs@cannon.af.mil](mailto:27SOWpublicaffairs@cannon.af.mil).

### PEDACITOS/BITS AND PIECES

Fire Chief **Jean Anaya Moya**, also a Spanish Market prizewinning artist, donated one of her celebrated straw applique pieces to the Santa Fe Firefighters Masquerade Ball silent auction on Oct. 30<sup>th</sup>.

A photograph of **Concha Ortiz y Pino de Kleven** (1910-2006) and an unnamed shepherd with Caracul lambs on the family's Aqua Verde Ranch (not, as printed, in Galisteo, but further southeast) was in *The New Mexican* (10/3). The article noted that Concha was "a champion for women." Elected in 1937, she represented the sixth generation of her family to serve in the State Legislature and was the first woman in America to be a majority whip. "Today her name graces a State office building."

On Nov. 16<sup>th</sup>, the State Board of Finance will mull the plan to purchase the **Ortiz Mountain Ranch** for a wild horse sanctuary as an adjunct to the **Cerrillos Hills State Park**. However the state would not acquire the mineral rights, which have already been leased by Santa Fe Gold from the landowner, Kansas resident Anne Potter-Russ. During the oil and gas fracas, she leased mineral rights for 60,000 acres in the Galisteo Basin to Tecton Energy, which has since declared it would not proceed with plans to drill.

**Cindy Lux's** stoneware bowls and **Woody Gwyn's** "River Bridge" painting were reproduced in *Pasatiempo* with coverage of the Galisteo Studio Tour.

### GCA UDPATE

from Roger Taylor, Secretary

The Board decided to hold on new Board member recruitment until March 2011 and it was voted to have Elayne Patton replace Amy Tremper as full Board member and to leave the position of Alternate vacant until the next Board election.

The Board will be looking to establish a volunteer group to resurrect the Saturday Coffees, as well as a volunteer garden committee to care for the Community Center plantings.

There has been no movement on the appeal on Saddleback. An amended complaint was filed by our lawyer, Patrick Whelan, on behalf of the GCA, to recoup expenses in the Gafford/Clayton lawsuit.

Muriel Fariello and Roger Taylor donated a new electric stove to the Community Center and the wiring was upgraded for new electrical load usage just before Studio Tour.



### COUNTY PLAN NEARING COMPLETION

The final vote on Santa Fe County's Sustainable Growth Management Plan (formerly the Sustainable Land Development Plan) will take place at the BCC on Nov. 9 (while EL PUENTE is in press) after more than two years of work. The new name is a bit ominous, but at least it's "managed" growth, and it includes directives on renewable energy and green building. A companion document (as yet unwritten) will be called the Strategic Action Plan.

Although there are fears that the new governor and a new administration might get rid of the hard-won Gas and Oil ordinance that is part of the plan, we are assured that it is sufficiently well crafted that it will be legally defensive in court.

Some residents of the Estancia Basin do not want to be subject to the County-wide plan. The area is "crucially different" from the rest of the County, says Commissioner Kathy Holian, in its "total reliance on groundwater; there is almost no possibility of them ever getting imported water" through the County water utility. So eventually there will be a special District Plan developed for that area.

"When we had few people in our County," writes Holian, "groundwater from wells was sufficient. Now it is becoming increasingly clear that, due to rapidly increasing population in the rural areas, we are overusing our aquifers in many places. In a multi-year drought, many wells would probably go dry." The Buckman Direct Diversion Water Treatment Plant is intended to deliver water to different areas in the unincorporated areas of the County (like Galisteo). But it's costing \$270 million, and counting. A burning question is how much of new infrastructure costs will be covered by developers and how much by us, the taxpayers? The very low impact fees now operative in the County will probably have to be raised, which will be fought tooth and nail by developers.

In the meantime, Lamy developer Joe Miller is mad as a hornet at the County. He claims that his application for a 143-acre development has been invalidated by "confiscation" of 30% of his property (apparently for affordable housing) and that the County appraisal of \$1000 per acre is less than he pays per acre on his taxes. His development is "on the path of growth on US 285" and has "water, electricity, phone and paved roads on three sides." His conclusion: Santa Fe County deserves its reputation as "the greediest, most corrupt, dysfunctional county in the state."

As citizens of Santa Fe County, we need to pay close attention to the new plan. Frank Hirsch has been attending the meetings on our behalf.





## HOLIDAY HAIKU?

Bill Huckaby has suggested a Haiku contest for the next issue. The traditional Japanese haiku is 17 syllables in a 5,7,5 pattern, telling a whole story or mood. Here's a translated haiku by its greatest practitioner, Matsuo Bashō:

This road  
No one walks along it  
Dusk in Autumn.

Send your entries to Bill at 2 La Otra Vanda, Galisteo.

# EL PUENTE SPONSOR: TOM MORIN

## GALISTEO CLASSIFIED

**ADS ARE FREE, AND FOR GALISTEO RESIDENTS ONLY. PLEASE CALL 466-1276 TO UPDATE, CHANGE, OR DELETE YOUR ADS. Next deadline: December 5th. SERVICES**

**Plan Your Christmas gifts now with Valrhona French Chocolate** in holiday wrappers, handmade by Evelyne of Galisteo: available at La Sala or call 466-4860.

**Pet and housesitting, watering plants, feeding animals, etc.** Call Linda Jones, 466-6624. **Carpentry:** Custom closets, hand-carved tables, benches, gates, doors; also electrical work. Ted Montoya, 466-1430 (messages).

**We build and repair coyote fences; haul trash; do yard work & other odd jobs.** Fair prices, local references, Michael Anaya, 660-8920.

**Dragon Lady: Full Service Catering,** Corey McGillicuddy, 660-1236.

**Archival matting, reframing,** thirty years experience. Sina Brush, 577-4045.

**Massage in the comfort of your own home.** Cathy Crelling, 490-2285.

**Barbara King Pottery:** functional and decorative, handcrafted with a variety of glazes on white stoneware. 466-3219.

**Yoga:** Enliven your body, refresh your mind! Small group classes and private sessions. Linda Braun, 466-8488.

**Rocky Mountain Handyman.** Can do anything! Call Mark Lyons, 629-9323.

**Reliable home and yard care** when you're away: mail collection, watering, security, etc. References available. Linda Braun, 466-8488.

**Remodelling, additions in adobe and frame, mud plaster, stonework, metal lathe plaster, flagstone and building maintenance,** Sina Brush, 577-4045.

**Computer tutor/personal assistant.** Contact Paige, 466-1002. **MacTech Support and Tutoring,** photo digitizing and organizing, and Photoshop lessons: Tom Martinelli, 466-1020. Beth is available for **petsittings in Galisteo,** 470-7606.

**Need a pet sitter or house sitter?** I will do short or long-term care, occasional overnights, reasonable rates, refs. available. For info, call Maria, 466-8930.

**White Dog Cyclery:** Certified bicycle maintenance/repair. Your family bicycle service. All bikes, repairs. Call Frank, 466-2121.

**Saturday Art Classes for children and adults,** Retablos and watercolors. 10-12AM or 2-4PM, weekdays or weekends. Catherine Ferguson, 466-2765.

**Common sense, gentle dog-training:** house manners, management problem-solving at your home; also limited boarding. Twenty years experience. Call Evelyn, 466-1875.

**Barbara Holloway Fine Handweaving** scarves, shawls, vests, jackets, handwoven of luxurious chenille. 466-2118.

**Linda Vista Stables:** Beginner western riding for children and adults; 1-2 hr. trail rides; short-term boarding. 466-8930.

**Passive Solar Builders:** Locally owned general contractor since 1980. Quality home construction, renovations: 466-2118.

**Like things done right? Welding, flagstone, moss rock, fountains, plumbing, sprinkler, and drip systems plus Gopher Control.** David Maestas, cell 670-8608 or 660-9715.

**Need a permit? Computer Aided Drafting Support** for architects, engineers, contractors etc. Adan Cárdenas, 466-8967.

**Galisteo Woodworks:** for your custom woodworking needs. Furniture and furniture repair. Antonio Chavez, 466-3601.

**SB Lejo/Sina Brush** is taking special orders for antique Mexican furniture. Call 577-4045.

**Dave's Auto Repair:** restoring, minor repairs, painting. Local refs. Free estimates: David Montoya, 466-2097.

**Nick Contreras: Landscaping, Brush Removal, Trash hauling, appliance pickup, move in, move out.** Call 920-2521.

**Manual Therapy incorporating modalities such as Roling, Thai massage, Shiatsu, Trigger Point therapy, and more.** \$50 per hour for a limited time. Cloud Hall, 670-7771, or 466-3375.

## +++ EL PUENTE DE GALISTEO+++

**Editor:** Lucy R. Lippard. **Contributors:** Richard Griscom, Jan Saunders, Tom Martinelli. **EL PUENTE logo** by Cara Lee. **Printer:** Allegra. **Send letters, comments, suggestions, contributions to EL PUENTE, 14 Avenida Vieja, 466-1276. NEXT DEADLINE: DEC. 5. TO BE A SPONSOR: make out check to GCA for \$75, note "for newsletter," send to address above.**

El Puente de Galisteo  
14 Avenida Vieja  
Galisteo NM 87540