

URL



This issue covers two months due to your editor's crazy travel and work schedule. Apologies. And while I'm at it, does anything in El Puente or in Galisteo make you mad ... or deliriously happy? Whatever happened to Letters to the Editor? It would be wonderful to have more contributions from the community.

ANNUAL GCA ELECTIONS

A quorum of thirty was easily achieved for the Galisteo Community Association's annual elections on March 24th. Freddie Cárdenas could not remain as president because he works for the Bureau of Indian Affairs in the U.S. Department of the Interior; his GCA position was considered by his bosses as a conflict of interest (perhaps because of Galisteo's stand against gas and oil development). "We're very sorry you're having to leave the Department of the Interior," someone quipped. But instead he left the GCA in good hands. Mela Montoya nominated Vice President Ana Cárdenas as his successor. Approval was unanimous and Freddie was thanked for his years of service.

Muriel Fariello was elected Vice President by acclaim, as was Roger Taylor, replacing Rob Civitello as Secretary. Corinne Anaya agreed to stay on as Treasurer and said "I love it!" Barbara Pfeiffer moved up from Alternate to fill Linda Braun's place. Janice Wall continues as a member. Barbara King's term was up and she will now put all her energies into La Sala (for which GCA is the fiscal agent). Amy Tremper and Amber Haskell were elected new Board members, and Elaine Patton will serve as Alternate.

Kristin Siemon thanked everyone working on the Saddleback case. Applause also greeted the new Community Center lighting, installed by Ted Montoya.

MEETING ON GALISTEO ARCHAEOLOGY

May 6, 6:30-8PM, Community Center

The community is invited to a meeting held by the Bureau of Land Management to inform us and get our input on the in-process management plan for the Galisteo Basin Archaeological Sites Protection Act. Information on the Federal Act and the sites can be found at www.galisteoarcheology.org.

Answer to last month's "what nobody knows about us": **JANICE WALL** announced on TV that the world was coming to an end (sort of).

NEXT: What Galisteo resident was kissed on the mouth by Johnny Cash to the roaring cheers of thousands of rodeo fans at Tingley Coliseum in 1984?

INTERVIEWS WITH CANDIDATES FOR COUNTY COMMISSIONER

In preparation for the Democratic primaries June 1st (which amount to an election), *El Puente* contacted the three candidates for County Commissioner for District 3 – Robert Anaya, David Bacon, and Angelica Ruiz – who are vying to replace Mike Anaya. We asked them the following questions:

1. How would you have voted on the Saddleback Ranch Estates land-use case that was approved by the BCC on April 13th?

ANAYA: I would have motioned to table to give residents more time to offer input.

BACON: I would have voted against the Saddleback subdivision. When a community shows up opposing a project in such numbers with such compelling arguments, it's time to call a time out and get some clarity on the proposal. The line that "our hands are tied" does not cut it with me. Who tied the commissioners' hands? Tied with what? And if their hands are tied, who does the community then have to represent their very real interests? Ethics, morality, vision, democracy -- all should have as much or more weight than law in these cases. Community rights have not been codified, hence they have no real standing in law. It is important to begin articulating these rights and driving them into law. Law is not actually handed down by God, it's created by humans for their common good.

RUIZ: As a sitting elected official, you are privileged to the accessibility of information not always available to the community at large to help make the best decisions. Given that I have not had the opportunity to review all the information provided and talk in depth with the community – as I would as their Commissioner—I cannot adequately answer this question.

2. What is your opinion on the NMDOT's plans for reconstruction, widening, and bridge replacement on NM 41 through the village of Galisteo? (Cont. p.2)

ANAYA: The bridge has been classified as one of the worst in the state; it needs to be repaired or replaced in accordance with the state standards taking into consideration the local, cultural and environmental impacts to the area.

BACON: I would go very carefully with the highway "improvement," especially if it means more, bigger, and faster truck traffic. We have the (good) concepts of slow food, slow money, and I would add slow roads to those in terms of quality of life enhancement.

RUIZ: I am in favor of reconstruction or renovation projects throughout District 3, provided that the interest of the community has been sought out, considered, and that the improvement will translate to enhanced quality of services for the community. Any projects initiated due to life/safety issues must be pursued with urgency to ensure the continued safety of the community.

3. What do you think are the major problems facing the Galisteo Basin area of the County in the future?

ANAYA: The preservation of the rural way of life and the careful consideration of any and all current and future impacts to the area.

BACON: The problem(s) facing the Galisteo Basin are: Lack of a comprehensive, sustainable land use plan – one which includes substantial community oversight and guidance. Granted, this plan should be forthcoming, but it will not suffice in any watered down version that cannot be upgraded. The new plan has extensive chapters on energy, agriculture, water, etc. These issues, in their current non-sustainable mode, are the basis of many of the problems facing the Basin and the larger Country. The fight against Tecton Energy was one small example of the lack of a true sustainable energy policy at the national, state, and local level, while the fight against Saddleback Ranch was an example of the lack of an enforceable development policy.

RUIZ: Ensuring the community is represented and advocated for successfully as opportunities for growth and/or development present themselves. And maintaining the history and traditions of the community by being an environmentally conscious and responsible representative and advocate.

4. Do you think expanded tourism would be beneficial for the area? If so, what and how?

ANAYA: Expanded tourism comes from things like the Rodeo, Studio Tour and Films. I think these have been positive things for Galisteo. I don't have any additional thoughts beyond this related to tourism.

BACON: Several years ago we toured the archaeological resources of the San Cristobal Ranch with Curtis and Polly Schaafsma. It was a memorable day of what I would consider "good" tourism. It was done in a sensitive manner and was informative and enriching for the participants. I've also been involved with riparian restoration projects that have been quite good. So I do know there is such a thing as good tourism. I do feel that the impacted communities should develop the guidelines and I feel that the more people within the County know about the importance and sensitivity of local resources, the better the chance that those resources will be protected.

RUIZ: Tourism continues to be a resource for Santa Fe County. If there is an opportunity proposed that was welcomed by and

included the community and included responsible use of our resources, I would support pursuing the option.

5. Anything else you want to add?

ANAYA: My family has been in Galisteo for generations. I am proud of who I am and what my family has done to help the community. I respectfully and humbly ask for your vote.

BACON: I am running on a platform of sustainability, democracy, and community. While those words can sound pretty vague and sound-bitish at their surface, I feel that at a deeper level, they contain the seeds of what we need to thrive as a county of responsible, sustainable communities. They are all "process" words, pointing to a strong respect for, and commitment to the democratic process, a strong respect for community process, and a stronger commitment to true sustainability in all its forms. I see them as a good basis from which to govern and serve District 3.

RUIZ: I would be honored to serve the citizens of Galisteo as their next County Commissioner. I would use my experience as an elected official [on the SFPS Board of Education], my background in management, and my education, to assist me in making quality, responsible decisions on their behalf and tirelessly advocating for their interests.



We've seen the commercials, read the ads, and received a knock on the door... But have we responded to the 2010 Census? Even the ghosts of history, at La Sala (shown here) and the Tienda Anaya, received their questionnaires. No telling whether they responded.

An accurate count of the U.S. population is the basis for many important political, economic, and social decisions that will affect our daily lives here. Conducted every ten years, the Census determines how many Congressional seats we are entitled to, and it is a key factor in calculating how much Federal aid each state receives. Today, about 40% of the Federal money New Mexico receives for Medicaid, affordable housing, food stamps, education, transportation, senior services and other social programs is based on information from the Census. New Mexico is 9th among the 50 states in federal dollars received on the basis of census data. MAIL IN THAT FORM! —Tom Morin

BCC APPROVES SADDLEBACK: WE APPEAL

On April 13th, the BCC approved the Saddleback Ranch subdivision north of Galisteo. The developer spoke at length about how he planned to meet the conditions. No one from the community who had spoken at the March public hearing was allowed to speak again, although the committee had done a great deal more work on the issue. Our lawyer, Christopher Graeser, did, however, make several good points about illegalities in the process. The Commission retreated for an executive session and emerged to unanimously approve the project, with a significant list of conditions. Kathy Holian decried the sprawl currently allowed. Mike Anaya, genuinely moved, tearfully explained that it was the hardest decision he'd had to make and that he had prayed to his father (the late Joe Anaya) about how to vote.

The commissioners explained their action by stating that the developer had met the code and they had no legal respite (although it would have been great if they had stood up for their stated principles and postponed their decision until the new code was in place, risking a lawsuit from the developer).

So the GCA has filed an appeal on the basis that the BCC did not follow the code that is in place. Our lawyer and Saddleback's will also pursue mediation on the terms and conditions. As Sina Brush wrote in her acute "My View" (*The New Mexican*, 4/11), a man from San Diego told her that New Mexico is "a vast wasteland waiting to be developed." Much is made of "locals" versus those "just off the bus," but, as Brush cautions, "out-of-state investors are not [the BCC's] constituents." (Gabriel Bethel was raised in New Mexico; his Houston partners were not.) Citing Mike Anaya's warnings a few years ago to newcomers to rural life, she notes that wealthy part-timers tend to employ fencing, lighting, etc. "to keep out what they live in – the country."

Gordon Wilson, President of the Archaeological Conservancy's Board, replied to your editor's "My View" (also 4/11) by insisting that the Conservancy was not made up of realtors, that 4 of the 12 board members are "prominent archaeologists" (no word on what the others were), and that the Conservancy does "not endorse or comment on the development itself" (which was not the case in a letter from Jim Walker, the AC's southwest coordinator who sealed the deal with Saddleback; he is, by the way, not an archaeologist.)

An elegant and successful breakfast and silent auction fundraiser for GCA's legal costs in the Saddleback case was held on April 24th at the Community Center.

PEDACITOS/BITS AND PIECES

The vultures of Galisteo were anxiously awaited, as they arrived a bit late this year. The first was spotted by intrepid birders on March 27th. The others trickled in by the end of the month and now we can look forward to some six months of soaring wings in the wind.

Nick and Joette (O'Connor) Trofimuk were featured in an article on "The Art of Living" in the April *New Mexico Magazine*. They extoll the virtues of black and white photography and give tips on how best to display it. They discovered Galisteo in the 1980s: "while strolling down a dirt road overrun with chickens, geese, donkeys and sheep. Suddenly they were selling their home

and medical practice in New Jersey and packing it all up for a sheep-ranching village where each found a new calling – he as a photographer, she as a gallery owner."

Chris Griscom was awarded the International Holistic Peace Messenger Award for her Contribution to World Peace by the Indian Board of Alternative Medicines in Calcutta.

Susan Rothenberg's show at the Georgia O'Keeffe Museum was featured in *The New York Times*, and in *The New Mexican's* "El Mitote"

Thor is the labor-and-equipment-intensive film being shot at Cerro Pelon Ranch now. It stars Natalie Portman and Chris Hemsworth and is directed by Kenneth Branagh.

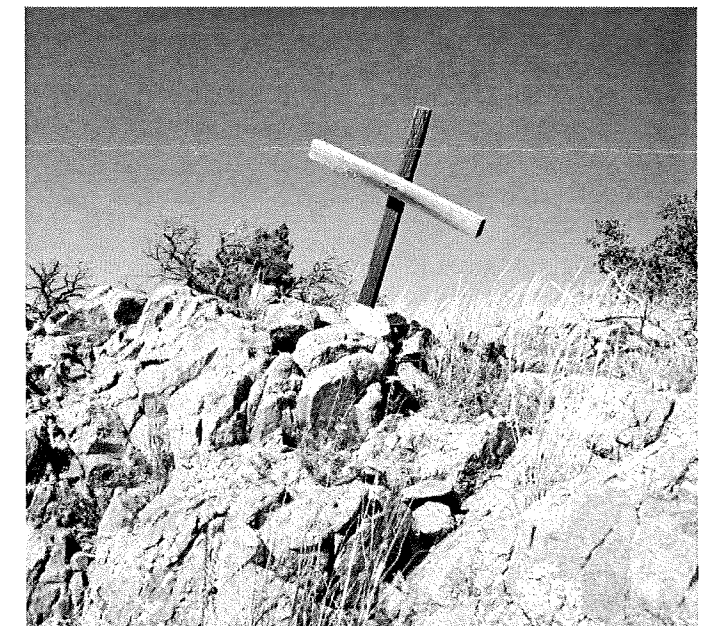
County Commissioner Mike Anaya has withdrawn his candidacy for Land Commissioner; he received 17.6 % of the vote at the Democratic Preprimary Convention in March, and needed 20% to be automatically placed on the June 1st ballot. Former Land Commissioner Ray Powell was the only one to receive enough (44%).

Deborah Madison signed her new book, *Seasonal Desserts: From Orchard, Farm and Market* at Collected Works on April 8th. According to Zane Fischer in *The Reporter*, "Madison's impressive new book deserves to be splayed open on your counter, dusted in flour and stained with berries." Deborah's other recent book, with husband, artist Patrick McFarlin, *What We Eat When We Eat Alone*, was written up in the AARP magazine (March-April). Seems the idea came from Patrick when he accompanied Deborah on a foodie trip to Europe; as a way of making conversation with people he didn't know, he asked them what they ate when they ate alone.

Beth Foote had a very successful showing of her splendid black micaceous pots at the Galisteo Historical Museum on 4/4.

Assistant County Fire Chief Steve Moya wrote an article on "Fire Districts Inspections in the County" for *The Connection*, the County Fire magazine, (Feb. 2010).

Barbara Seiler shows new work at the Contemporary Clay Fair at the Santa Fe Woman's Club, May 1-2, 10-5.



April was Holy Week, wind, and warmth.

EL PUENTE SPONSORS: BARBARA AND PHILIP PFEIFFER

GALISTEO CLASSIFIED

ADS ARE FREE, AND FOR GALISTEO RESIDENTS ONLY. PLEASE CALL 466-1276 TO UPDATE, CHANGE, OR DELETE YOUR ADS. Next deadline: June 5th.

FOR RENT

Family or friends coming for a visit? Adobe casita, fully furnished, rent by week or month. Call Steve, Jean: 466-1544.

Small Casita, \$650 per. mo., incl. utilities. Call Liz, 466-6003.

FOR SALE/FREE

Old but working: Brother fax machine and **Canon BJ4300 printer**. Best offer, or free to non-profit. Lucy, 466-1276.

SERVICES

Carpentry: Custom closets, hand-carved tables, benches, gates, doors; also electrical work. Ted Montoya, 466-1430 (messages).

We build and repair coyote fences; haul trash; do yard work & other odd jobs. Fair prices, local references, Michael Anaya, 660-8920.

Dragon Lady: Full Service Catering, Corey McGillicuddy, 660-1236.

Part-time personal secretary, references and resume available. Also **archival matting, reframing**, thirty years experience. Sina Brush, 577-4045.

Massage in the comfort of your own home. Cathy Crelling, 490-2285.

Barbara King Pottery: functional and decorative, handcrafted with a variety of glazes on white stoneware. 466-3219.

Yoga: Enliven your body, refresh your mind! Small group classes and private sessions. Linda Braun, 466-8488.

Rocky Mountain Handyman. Can do anything! Call Mark Lyons, 629-9323.

Reliable home and yard care when you're away: mail collection, watering, security, etc. References available. Linda Braun, 466-8488.

Remodelling, additions in adobe and frame, mud plaster, stonework, metal lathe plaster, flagstone and building maintenance, Sina Brush, 577-4045.

Computer tutor/personal assistant. Contact Paige, 466-1002. **MacTech Support and Tutoring**, photo digitizing and organizing, and Photoshop lessons: Tom Martinelli, 466-1020.

Beth is available for **petsittings in Galisteo**, 470-7606. **Need a pet sitter or house sitter?** I will do short or long-term care, occasional overnights, reasonable rates, refs. available. For info, call Maria, 466-8930.

White Dog Cyclery: Certified bicycle maintenance/repair. Your family bicycle service. All bikes, repairs. Call Frank, 466-2121.

Saturday Art Classes for children and adults, Retablos and watercolors. 10-12AM or 2-4PM, weekdays or weekends. Catherine Ferguson, 466-2765.

Native Bloom, Landscape design/maintenance. Linda, 466-4658.

Common sense, gentle dog-training: house manners, anagement problem-solving at your home; also limited boarding. Twenty years experience. Call Evelyn, 466-1875.

Barbara Holloway Fine Handweaving scarves, shawls, vests, jackets, handwoven of luxurious chenille. 466- 2118.

Linda Vista Stables: Beginner western riding for children and adults; 1-2 hr. trail rides; short-term boarding. 466-8930.

Passive Solar Builders: Locally owned general contractor since 1980. Quality home construction, renovations: 466-2118.

Like things done right? Welding, flagstone, moss rock, fountains, plumbing, sprinkler, and drip systems plus Gopher Control. David Maestas, cell 670-8608 or 660-9715.

Need a permit? Computer Aided Drafting Support for architects, engineers, contractors etc. Adan Cárdenas, 466-8967.

Galisteo Woodworks: for your custom woodworking needs. Furniture and furniture repair. Antonio Chavez, 466-3601.

SB Lejo/Sina Brush is taking special orders for antique Mexican furniture. Call 577-4045.

Dave's Auto Repair: tune-ups, oil change, restoring, minor repairs, restoring, painting. Local refs. Free estimates: David Montoya, 466-2097.

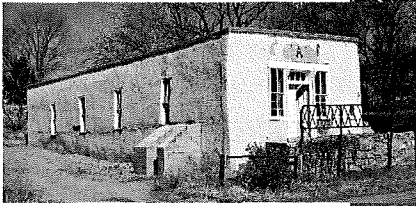
Nick's Landscaping, Brush Removal, and Garbage Collection. Call 231-6352.

Manual Therapy incorporating modalities such as Roling, Thai massage, Shiazu, Trigger Point therapy, and more. \$50 per hour for a limited time. Cloud Hall, 670-7771, or 466-3375.

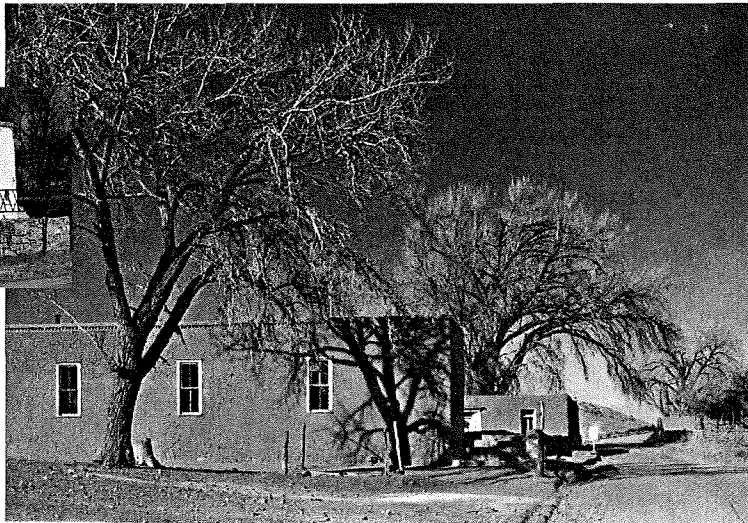
+++ EL PUENTE DE GALISTEO+++

Editor: Lucy R. Lippard. **Contributors**: Richard Griscom, Jan Saunders, Tom Martinelli. **EL PUENTE logo** by Cara Lee. **Printer**: Allegra. **Send letters, comments, suggestions, contributions to EL PUENTE, 14 Avenida Vieja, 466-1276. NEXT DEADLINE: JUNE 5. TO BE A SPONSOR: make out check to GCA for \$75, note "for newsletter," send to address above.**

El Puente de Galisteo
14 Avenida Vieja
Galisteo NM 87540



today--temporary buttresses hold failing walls in place



in its prime...shaded and just off the Galisteo Plaza

what picture?

Why we should save the 'La Sala de San José'

'La Sala de San Jose' is the adobe building across CR 42 from the church. The State Historic Preservation Division is recommending 'La Sala de San Jose' for listing on the National Historic Register. As we, the Board of La Sala de Galisteo, apply for grant funding for restoration of the building, it seems the community might enjoy some details pertaining to the history of this village structure.

The following contains excerpts from our grant application. Enjoy. LSDG

The 'La Sala de San José' represents and embodies an entity of exceptional historic, artistic and cultural significance in the village of Galisteo, within the Galisteo Basin of New Mexico. This building is an example of a meeting hall at the turn of the 19th Century. *It is the only meeting hall of this type existing within the Galisteo Basin and possibly the only pristine example left in the state.*

NO 20th

The La Sala de San Jose is situated in both a local and nationally significant setting. This setting is valued for its great natural beauty, with many archeological and geological features. The Galisteo Basin Archaeological Site Protection Act (Public Law 108-208) seeks to protect some of the most dramatic archaeological evidence of indigenous life ways and early historic contacts between indigenous peoples and European explorers and settlers. The Congress of the United States has recognized the basins' national significance stating that the 'Galisteo Basin is the most important area west of the Mississippi containing examples of Native American, Spanish and Anglo cultural heritage'. La Sala de San Jose expresses this heritage through both its construction and the history of its varied uses. The village of Galisteo also falls within the boundaries of the Northern Rio Grande National Heritage Area newly formed by the National Park Service.

The building was erected between 1900 and 1920 using traditional indigenous New Mexico methods and has been in continuous use from the time it was built until the mid 1970's and sporadically since then.

no) The building is constructed in the Territorial Style, unique to the Southwest, using mud adobe adapted from the Native Americans. This building expands on the traditional style meeting hall dimensions of 20' x 60' with the addition of a stage at one end extending the length to 80'. The interior of the building is almost pristine with its original floorboards, bancos (benches), door and window placement, and wooden stage at the west end. The completion of the transcontinental railroad made possible the convenient, and very advanced for its day, delivery of the mail order windows and doors for the building which are all still in good condition.

The unique foundation design, traced to the Spanish settlers was made from local basalt stone. There is a traditional flat roof with a north facing slope and canales (drains). The addition of a brick parapet around the roof also reflects the Territorial Style.

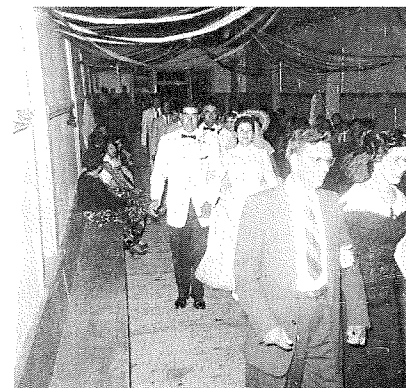
7 This is the most important historic structure in the village of Galisteo because it is an excellent example of the adaptation of all three cultures in a strategic part of this Southwest Region. This building exhibits a community's concept of how and where a group held civic life events -- social gatherings, meetings, weddings, dances and exhibition space for the community at large. Throughout its history the St. Joseph's Society has and continues to hold its pageants and fiestas in Galisteo.

As far back as prehistoric times Galisteo has been home to many important artisans and continues today to attract many local, nationally, and internationally known artists. In recent years community members have recognized our historical significance and want to restore this building to community life while preserving the La Sala de San Jose as part of our larger cultural heritage. **The State Historic Preservation Division is recommending the building for listing on the National Historic Register. This designation helps aid in our ongoing village efforts to keep the rural quality of Hwy 41.**

We hope you have received our letter inquiring about your fund raising availabilities and donations. We know that all of you will want to play some part in helping to save the 'La Sala de San Jose' and work together in the coming years to restore this wonderful piece of our village's history.

Any additional questions please call
Barbara King, La Sala de Galisteo board president, 466-3219.

Thank you.



Arroyo
Marta Delgado's
1st wedding -
She wanted
this!