

ISSUE #126

SUMMER 2009

*15-19*  
**JULY 25-26, RODEO DE GALISTEO:** Saturday, 11AM: Gala Parade through village center.

\*

**AUGUST 15, "EVENT AT GOOSE DOWNS"** International equestrian competition: Dressage, 8AM, Show Jumping, 10 AM, Cross-Country, 2PM. Admission free, food available. call 466-8771 if you want to compete, volunteer, or sponsor an event. [www.gooseedowns.com](http://www.gooseedowns.com) for updates.

\*

**CHILE CHALLENGE:** Watch the Bulletin Board.

## MOVIE TRASH

Barbara Holloway

Dear Neighbors, I just wanted to share with you my reflections on the impact of the recent film shoot in Galisteo that was staged from the Community Center. To begin, a bit of history. We purchased our land in 1979 from the Galisteo Community Association. Barbara McWilliams, then-owner of the Fleming house, donated two acres to the GCA to raise money for the organization. In 1984 we moved there, initially in a mobile home while we built our house. In the 25 years we have lived right next door to the Community Center, we have never regretted our purchase. The occasional party, meeting, or event has never been a problem. *(Cont. to right).*

**MEALS ON WHEELS** are delivered to Galisteo through the Eldorado Senior Center; \$1.50 per day donation. Call 466-1039 for information.

\*

**CORRECTION:** The former Galisteo Inn is not for sale – only the liquor license. The family is keeping the property as a retreat and restoring it as a “historically relevant hacienda,” owner Brian Boyd told *El Puente*.

\*

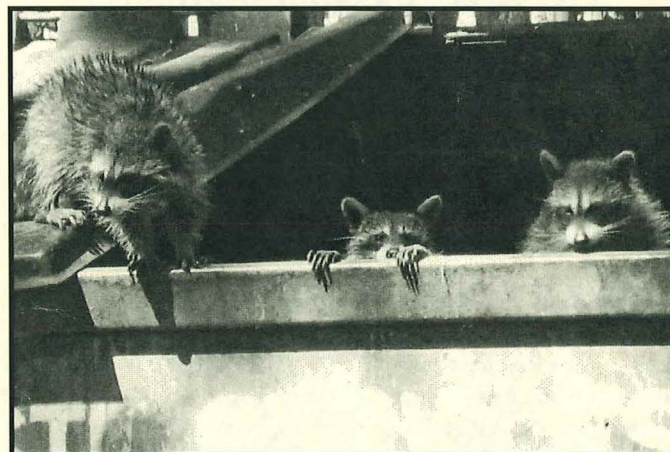
**EL PUENTE WILL BE BACK IN SEPTEMBER.  
 HAVE A GREAT SUMMER**

But suddenly it seemed as if we were living in a commercial zone. The impact of that 10-day sojourn of the KIM production company was more than immediate neighbors should have to endure. The noise, the dust, the commotion, the traffic, the round-the-clock lights, the diesel fumes, the random people walking through our yard, the great volume of cars, trucks, trailers, semis parked very nearly in our yard was just too much.

It was ugly and some people were less than polite. They drove through the village, even though they were not supposed to the river. We had friends and family in town for the Century Bike Ride and it was embarrassing to have them at the house with trash all over the place. I realize that this was a reasonably good income producer for the GCA and we are completely *(Cont. p.2)*



Coming Soon



Coming at You

(photo: Mark Lyons)

**(MOVIE TRASH Cont.)**

supportive of the Association. BUT I sincerely hope not to have another 10 days like those. Here are a few ideas that may help alleviate such problems in the future.

1. I ask the Board to seriously consider the impact of Community Center rentals on adjacent homes. Galisteans not living near the Center probably have little concept of the impact.
2. I ask the Board to invite those living near the Community Center to any informational meetings on a "major" rental (longer times and larger numbers of people involved) and consider their input.
3. I ask that the Board require future movie companies to hire a Galisteo resident to "run interference" between it and the community. This person (or persons) should be paid to be on site round the clock to ensure that the Company follows rental agreement rules, and that noise, traffic, and lights at night are kept to an absolute minimum.

I hope the GCA Board will take these suggestions into consideration. With additional safeguards, such rentals could be a successful source of revenue.

We went into Santa Fe on Monday, May 18<sup>th</sup>. There were still numerous vehicles parked next door, plus a very large dumpster and trash strewn about. When we returned home that night, all the vehicles were gone and most of the trash removed. It was such a relief to see our beautiful neighborhood again. That's the way we like it!

\*

**ED. NOTE:** *El Puente* was also notified that movie people had gotten hold of a Galisteo Directory. The Fire Department publishes this for the community only; they are concerned that location agents could sell it, or it could fall into criminal hands. It's okay to give out names and numbers for specific reasons, but not the whole booklet! The community has to protect itself, given that the movie business is getting bigger and our information could go all over, even out of state.

**GALISTEO HISTORICAL MUSEUM/LA SALA OPENS FOR SUMMER**

**Janice Wall**

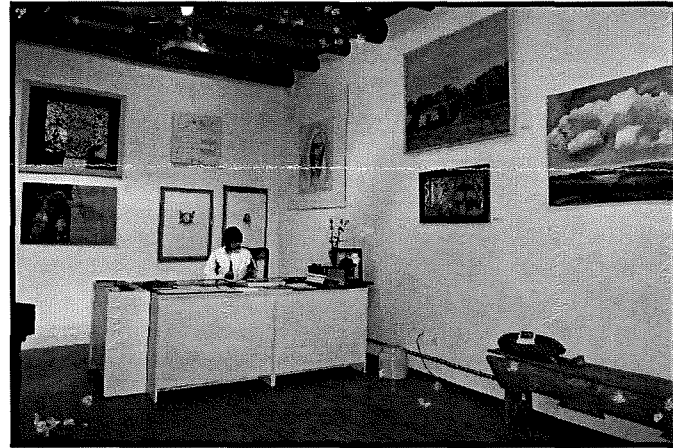
Memorial Day weekend marked the opening of the Galisteo Historical Museum and the first Sala de Galisteo Group Show. Dianna and Woody Gwyn's wonderful historic home now has a room under the portal open to the public on summer weekends. Dianna has assembled an exhibit of old photographs and reading materials that tell the fascinating facts and colorful stories of Galisteo.

In addition, twenty one Galisteo artists are showing work. A team of volunteers, working against a tight deadline, prepped and painted the gallery walls. In only three days, Kristen Siemon organized and Eric Thomas and David Van Dyk hung the diverse collection. An Artists Directory, portfolios and resués give information and open studio times.

Even with little time for public notice, we had a flurry of visitors on the holiday weekend. And we Galisteans are getting to know each other better, as we also become custodians of our community's past.

In addition to the Historical Museum, *Priscilla Hoback plans to open her gallery on summer weekends. Maria Ortiz y Pino's Healing Crosses of Galisteo Gallery will also be open, and Catherine Ferguson and Janet Pfeiffer will open Catherine's garden and studio on Sundays.*

Community volunteers are needed to staff the Historical Museum/La Sala on Saturday and Sunday afternoons through the summer. Call Catherine Ferguson at 466-2765 to sign up.



(Photo: Sam Medford)

**A LITTLE MORE HISTORY:  
GALISTEO in 1846**

**Richard Smith Elliott\***

*Elliott was with the U.S. Army when it commandeered New Mexico in 1846, and kept a diary. He served with a grazing detachment outside Galisteo.*

Visited Galisteo which contains about 200 inhabitants. The houses are built of adobe, or sun dried bricks, whitewashed inside, and with flat roofs, as in bible times, when people could go on 'the house tops.' The town is on a knoll in the valley, commanding an extensive view. Near it there is a range of volcanic rock, thrown up by some great convulsion. Northeastward the ground is high, broken, and exhibiting many upheaves and dislocated strata. The waters from the mountains converge into streams and fertilize a depression in the valley, so that corn (called mais, pronounced *myse*) can be raised sufficient for the scanty dish of atole (mush) and tortillas (thin cakes) used by the people. Some wheat is also raised; thrashed by hand, winnowed by the breath, or by throwing in the air, ground between two stones by the women, and baked into very tolerable bread – for hungry men. The cooking utensils are pots and bowls of earthenware, made by the Pueblo Indians and no doubt the manufacture of these utensils by the Pueblo (or village) Indians is a remnant of the former civilization of the Ancients of America. The cooking is done by broiling or stewing in these earthenware vessels, or roasting on the coals. Tortillas are baked on the flat plate of iron, or griddle. The bread of ground wheat is baked (Cont.p.3)

in mud or clay ovens similar in structure to many in the States. Milk from goats and cows is much used.

Cattle are not numerous at the village, but there are quite a number of goats and sheep. A kind of incipient cheese, or curds compressed by hand, is made in profusion, and is no doubt wholesome. The inhabitants at this season rarely sleep in their houses, but spread their mats or blankets before their doors and sleep in the open air. In day time their beds are folded up and used for seats inside the rooms. The kitchens have neat chimneys in the corners. The roofs are made with pine logs, corn husks on them, and earth over all, sufficient to turn all the rains of this climate. The best rooms have part of the floor usually covered with a woolen carpet, made in the village; several looms are seen under sheds in different parts of the town; also spinning wheels of rude construction.

The village has a church, about 30 feet long by 20 wide, neatly whitewashed inside; the walls are partly built of stone, and topped out by adobes. The door of the church is opposite the pulpit, at one end, and a gallery over it. [This is the original village church, probably built in the 1820s, now a mound on The Hill]. The windows of the houses are square or round openings, with wooden bars crossed, and shutters to close when necessary." \**(Notes Taken in Sixty Years, St. Louis: R.P. Studley, 1883.)*

**PEDACITOS/BITS AND PIECES**

Galisteo bladesmith **Arthur Lynn** took first place in the "Knife, Sword, and Edged Weapon" category of the *Art of the Blacksmith* show at the Lincoln County Fairgrounds in Capitan.

A column in the March 16<sup>th</sup> issue of *High Country News* was devoted to **Ted Harrison and the Commonweal Conservancy Project** on the Thornton Ranch. It mentions that "Harrison had to appease the residents of nearby Galisteo, who worried that the development would impact their water supply." (The past tense is inappropriate; negotiations continue.)

The following item appeared in *The New Mexican's* "Past 100 Years": "**June 3, 1909: José Ortiz y Pino**, county commissioner living at Galisteo, was an arrival last night. He is here to attend a meeting of the Penitentiary Board of which he is also a member." And a few lines from **José Ortiz y Pino III's** 1983 book *Curandero* are read on the State Historian's prizewinning website, *nemexicohistory.org*.

**Patrick McFarlin's** drawing of a "food flasher" was on the cover of *Pasatiempo* (May 8) plus a feature on his and **Deborah Madison's** new book *What We Eat When We Eat Alone*. Craig Smith describes the illustrations as "charming, funny" and the book as "light and colorful in concept and delightful to read."

**Woody Gwyn's** show at Gerald Peters Gallery in Santa Fe (1011 Paseo de Peralta) opened June 12<sup>th</sup> and runs through July 25<sup>th</sup>. More gorgeous landscapes.

**Denise Lynch** was one of the volunteers from Friends of Archaeology who helped make the flurry of authentic arrows that hover near the ceiling in the permanent display of the new History Museum in Santa Fe.

The State Oil Conservation Commission has approved the **legal boundaries of the Galisteo Basin** and will vote in mid-June on proposed special rules to protect water supplies and cultural resources in the Basin.

If you're out hiking and are (justifiably) worried about **snake bite**, try a Sawyer Extractor, touted by some as the most effective way to draw poison from a bite if applied within 3 minutes and maintained for 30 more --on your way to the Emergency Room!

**THE SHOULDERS OF GIANTS**

**Jan Saunders**

Several years ago I wrote an article about hard-to-identify "little gray birds" calling them LGB's – a catchy term invented by crusty ole Ed Abbey. I gave him full credit for his now popular and much-used abbreviation. A few weeks ago I spiced up an essay on the life style of turkey vultures with Mary Austin's evocative description, "slant-wing watchers." Once again, full credit to the author.

And so I am at a loss to explain why, in last month's *El Puente* article on springtime birds, I played fast and loose with someone else's amusing turn of phrase. I used the term, "gra-bass" to describe tail chasing, mating birds, without giving credit to its inventor, Galisteo's own Bill Isaacs, and his charming and playful descriptions of the birds he loved so much.

Everyone loved Bill and his students revered him. Flocks followed him down many a bird trail hanging on his every word. Apparently when Bill would say, "Look at those two fly catchers playing gra-bass," hands would wave and questions would fly: "How do you spell that?" "Does it have an accent?" "Is that a French term?" A little further down the trail, truth would dawn and giggles would break out.

I never had the pleasure of knowing Bill. Never took his popular classes at local colleges. Never walked with him among the birds of the Galisteo Bosque. But I can promise you that the next time I say "gra-bass," I will pause a moment to remember the joyous spirit of Bill Isaacs—and softly ask his pardon.

**"If I have seen further it is only by standing on the shoulders of giants." -- Sir Isaac Newton (1643-1727)**

**GCA NOTE:** Board Member Linda Braun (466-4688) is now in charge of Community Center use and rentals.

**Thanks to everyone for their patience during the messy and ongoing process of installing water meters.**

**CONGRATULATIONS AND THANKS to GVFR members Isabella Gonzales and Wayne King, who are now licensed Basic EMTs.**

**EL PUENTE SPONSORS:  
LIZ ROSE AND  
DAVID BURK**

## GALISTEO CLASSIFIED

**ADS ARE FREE, AND FOR GALISTEO RESIDENTS ONLY.** Call 466-1276 by September 5th for next issue.

### FOR RENT

**Small adobe casita in the heart of the village.** \$625 mo. Includes utilities. Call Steve or Jean, 466-1544.

**Charming casita for one,** great views, own yard, washer/dryer, non-smoking, \$650, 466-6003.

**500 sq. ft. art studio,** \$325 mo., call Stuart, 466-4153.

### WANTED

**Very wide TV monitor/DVD,** for Free Exercise Class at Community Center. Reasonable price. Call Amy, 466-9871.

### SERVICES

**Going Away? Reliable home and yard care:** watering, weeding, mail collection, Linda Braun, 477-8488.

**Yoga Class** – all levels welcome. Bring mat, blocks, firm blanket, webbed belt. Tues. & Thurs., 8:30-9:30AM. \$10 per class. For more info, 471-4547 or fosterhurley@hughes.net.

**Let me stage your studio and help you sell your art or craft.** Kristen Siemon, 466-3432.

**Certified Facilitator, Work of Byron Katie,** Work Circles in Galisteo 2<sup>nd</sup>/4<sup>th</sup> Wednesday each mo.; Workshop Sat., June 20<sup>th</sup>, call Julia Moore, 466-7256, or see www.juliamoore.com.

**Hands On Clay Workshop, EARTH to HORNO. June 19-21 and July 17-19.** Hand building, Pit firing, Cooking in Horno Oven. www.PriscillaHoback.com; or phone 466-2255.

**Need help with errands in Santa Fe?** As your personal assistant, I can shop, pick up prescriptions, do small tasks, drive you to town. \$20 per hour from Galisteo. Also light garden work, feed pets, forward mail. Harmony, 466-3932.

**Yoga: Enliven your body, refresh your mind.** Small group classes and private instruction. Linda Braun, 466-8488.

**Monday and Thursday FREE Exercise Class,** Call Anna, 466-8967 or Amy, 466-9866.

Get a jump on your growing season with a **“Grow Y’own” hooped, raised bed.** Call Ken at 466-0393 or 490-1849 for details.

**Barbara King Pottery:** functional and decorative, handcrafted with a variety of glazes on white stoneware. 466-3219.

**Manual Therapy incorporating modalities such as Rolwing, Thai massage, Shiatsu, Trigger Point therapy, and more.** \$50 per hour for a limited time. Cloud Hall, 670-7771, or 466-3375.

**Rocky Mountain Handyman.** Can do anything! Call Mark Lyons, 629-9323.

**Remodelling, additions in adobe and frame, mud plaster, stonework, metal lathe plaster, flagstone and building maintenance,** Sina Brush, 577-4045.

**Computer tutor/personal assistant.** Contact Paige, 466-1002.

**MacTech Support and Tutoring,** photo digitizing and organizing, and Photoshop lessons: Tom Martinelli, 466-1020. Beth is available for **petsitting in Galisteo,** 470-7606.

**Need a pet sitter or house sitter?** I will do short or long-term care, occasional overnights, reasonable rates, refs. available. For info, call Maria, 466-8930.

**Dog-Walking.** Will check on your pets during the day: Marghreta, 466-4457.

**White Dog Cyclery:** Certified bicycle maintenance/repair. Your family bicycle service. All bikes, repairs. Call Frank, 466-2121.

**Saturday Art Classes for children and adults,** Retablos and watercolors. 10-12AM or 2-4PM, weekdays or weekends. Catherine Ferguson. 466-2765.

**Native Bloom,** Landscape design/maintenance. Linda, 466-4658.

**Common sense, gentle dog-training:** house manners, management problem-solving at your home; also limited boarding. Twenty years experience. Call Evelyn, 466-1875.

**Barbara Holloway Fine Handweaving** scarves, shawls, vests, jackets, handwoven of luxurious chenille. 466-2118.

**Linda Vista Stables:** Beginner western riding for children and adults; 1-2 hr. trail rides; short-term boarding. 466-8930.

**Passive Solar Builders:** Locally owned general contractor since 1980. Quality home construction, renovations: 466-2118.

**Ron Helman, Life Coach:** see www.ronhelman.com; 466-1919.

**Like things done right?** Welding, flagstone, moss rock, fountains, plumbing, sprinkler, and drip systems plus Gopher Control. David Maestas, cell 670-8608 or 660-9715.

**Need a permit? Computer Aided Drafting Support** for architects, engineers, contractors etc. Adan Cárdenas, 466-8967.

**Galisteo Woodworks:** for your custom woodworking needs. Furniture and furniture repair. Antonio Chavez, 466-3601.

**SB Lejo/Sina Brush** is taking special orders for antique Mexican furniture. Call 577-4045.

**Carpentry:** Custom closets, hand-carved tables, benches, gates, doors, 35 yrs. experience, local refs. Onesimo, 466-1430.

**Dave’s Auto Repair:** tune-ups, oil change, restoring, minor repairs, restoring, painting. Local refs. Free estimates: David Montoya, 466-2097.

**Nick’s Landscaping, Brush Removal, and Garbage Collection.** Call 231-6352.

## +++ EL PUENTE DE GALISTEO+++

**Editor:** Lucy R. Lippard. **Contributors:** Richard Griscom, Jan Saunders. **EL PUENTE** logo by Cara Lee. **Printer:** Allegra. **Send letters, comments, suggestions, contributions to EL PUENTE, 14 Avenida Vieja, 466-1276. NEXT DEADLINE: September 5th. TO BE A SPONSOR: make out check to GCA for \$75, note “for newsletter”; send to address above.**

El Puente de Galisteo  
14 Avenida Vieja  
Galisteo NM 87540