



ISSUE #124

APRIL 2009

*** CHANGE OF DATE ** MONDAY APRIL 27*
7 PM: Annual Galisteo Community Association
Board Elections at the Community Center
(plus refreshments and short meeting)
COME IF YOU CARE ABOUT GALISTEO**

PLAN FOR MAILBOX PARK

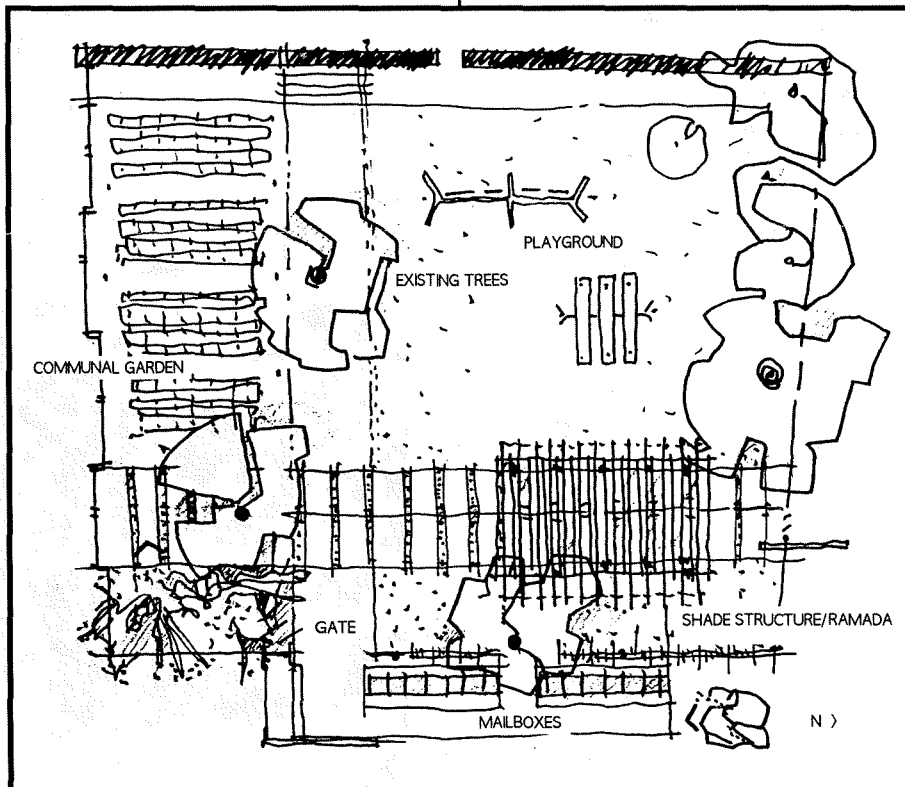
The plan below was drawn up by Galisteo architect Rob Civitello (also a GCA Board member) for the remodeling of the Philip Watts III Park behind the mailboxes. The plan was approved by the County (Scott Rivers is the contact) and work started on April 1st, no foolin'.

The whole plan was approved, but the roofed ramada/shade structure may come later because of the permit process and possibly budgetary restrictions. Workers are currently scraping the ground and preparing the drainage.

**APRIL 15, 6 PM Galisteo Community Center:
Meeting to hear and respond to the Report on
the County Growth Management Plan.**

THIRSTY WETLANDS

ON MAY 2nd, Earth Works Institute, the New Mexico Wilderness Alliance, and Cerro Pelon Ranch are co-sponsoring a work day at the wetlands to the west of the Galisteo Bridge on Highway 41. Last year Cerro Pelon cut down all the Russian Olives in the oxbow to help preserve the wetlands. But it didn't work, because it has to be done year after year unless a chemical retardant is applied to the new shoots, which remains a possibility. The whole idea is to get more water in the wetlands, to bring up the water table upstream in the village and in the ranchland adjacent to the wetlands. (Call Earth Works Institute, 982-9806 for further information and times.)



TREE PLANTING

Barbara King

On March 23rd, we had a great morning planting trees at the Community Center. If you haven't seen them yet, be sure and drive by! The Galisteo Community Association Board wants to thank our wonderful volunteers: Steve Tremper brought a helper, Jeff, and machines from the Cerro Pelon Ranch. They excavated the beds and then brought topsoil and compost from the ranch to add to what we had bought. Linda Rice had picked out three beautiful trees – two Frontier Elms and a Golden Rain, and donated all the planting emendments.

Eric Thomas, David Van Dyk and Wayne King helped with the hauling of sand and compost, mixing it all into the soil, and planting and staking the trees. Eric and David also donated three small poplars that we planted at the west end of the building where there is another poplar. Philip Tuwaletsiwa and Steve Tremper have also offered rocks for the berm. Sometime in May, we'd like to plan a community work day to arrange rock at the edge of the berm. (Linda, David and Eric; Photo; Barbara King.)



GCA NOTES

Linda Braun, Secretary

If you want more information about running on April 27th for the three positions open on the GCA Board (Secretary and two general members), contact a current board member.

Much work was started and accomplished in our community in the past month: The landscaping project at the Community Center began on March 23rd. (See above.) Work began on the Philip Watts III Park behind the church. Restoration of La Sala by Cornerstones began, and the village water system is being repaired, replacing lines on the east side and setting up meters.

The GCA Board has completed and approved its proposed Film Guidelines. Next they will be presented to the County to see if they can be integrated into permits for all film projects in Galisteo.

The Annual Galisteo Clean-up Day will be Saturday morning, May 23.

At a recent fundraising event for the New Mexico Environmental Law Center, the GCA presented a check for \$1100 to the lawyers who have been dedicated to our struggle against gas and oil development in the Galisteo Basin.

PEDACITOS/BITS AND PIECES

Ron Helman has a TV mini-series running for six weeks on Santa Fe cable, in which he takes his life-coaching practice public. Focusing on "setting goals and finding ways to achieve them," each episode features a different person. It's on the SFCC's Channel 16 (Comcast). Or you can see it on Helman's web site: www.ronhelman.com.

Barbara King and Barbara Seiler will participate in the Contemporary Clay Fair at the Santa Fe Women's Club (1616 Old Pecos Trail) on April 25-26, 10-5.

The comedy *Did You Hear about the Morgans?* with Sarah Jessica Parker and Hugh Grant will be the next film shot partly in Galisteo (aka Wyoming).

The County Commission has approved the purchase of 465 acres in the Galisteo Basin as recommended by COLTPAC (County Open Lands and Trails Committee). The area from the Railroad tracks to Petroglyph Hill will provide about six miles of trails and an easement to the existing Rail Trail.

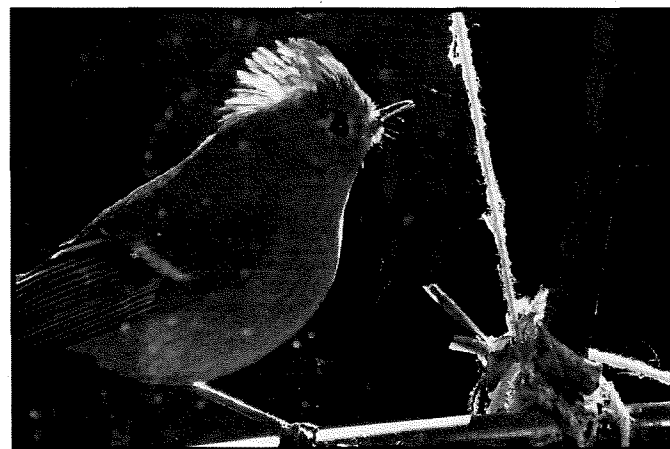
FOOL ME ONCE

Jan Saunders

My tall, good-looking Mother-in-law was fond of saying, "If you want a man to remember you, either make him mad or make him laugh!" The same goes for the tiny Ruby-crowned Kinglet, who will only display his beautiful ruby crown if he's mad (agitated/territorial/threatened) or laughing (flirting with or showing off for the opposite sex). Fooled by his own reflection in a cold January window, this little guy picked a fight with himself. Mark Lyons snapped his shot from inside the house.

As far as I can tell, some Ruby-crowned Kinglets stay in Galisteo year round, while some move north or at least to a higher altitude in the summer to breed and nest. Watch for them in the Bosque hovering like hummingbirds as they pick insects off the tops of branches. I have twice been lucky on the Valle Grande trail in the Valles Caldera National Preserve to see a male displaying to his mate. I was so close I didn't need binoculars to catch the excitement.

It was not at all surprising that this intense little bird, in a fit of territoriality, attacked a springtime birdwatcher at the Audubon Center a few weeks ago. The 4 1/2" Kinglet is indeed "rough, tough, and hard to bluff." But it seems he's not fool-proof!



INVITATION TO THE ART OF THE BOSQUE

On June 6th, the Museum of Northern Arizona in Flagstaff, Arizona will open an exhibition of Judy Tuwaletsiwa's work on the Galisteo Bosque -- photographs she has been taking every day for the last six months, as well as paintings and objects made from materials found in the bosque. The show remains up until November 1st.

Judy invites the community to come and preview this intimate art of the Bosque in her studio just above the creek at 23 La Vega, on Sunday, APRIL 26th, 2-4PM.



"REVITALIZING GALISTEO'S VILLAGE CENTER"

That was the title of a well-attended meeting held in the Community Center on March 25th, led by Charlie Deans and Will Powell of New Mexico MainStreet. The good news is that there is a Highway 41 Corridor Plan under way, directed by Dave Pennington, Associate Lead Consultant for Context Sensitive Solutions (CSS) with the State Department of Transportation (DOT). Bill Hutchinson, a DOT landscape architect and also a specialist in context sensitive design, was present at the meeting. MainStreet is used to working with the DOT... with which Galisteo has so far had less than good luck.

Deans gave a Powerpoint presentation of his plan for redesigning a roughly 1200' stretch of Highway 41 around the church and at the crossroads with CR42 and Via La Puente.

His plan included a change of pavement color and material in front of the church (representing the old plaza), a crosswalk, and a traffic island, both aimed at slowing down traffic and making the center of town visible to those driving through. The idea is to create a bottleneck, with the motto "Streets are for People; Traffic is for calming." On each side of the road, he proposes a line of trees and a narrow runoff ditch to feed them; a 5' bike lane and a pedestrian walkway would also be colored differently from the main road and made of "polypavement" -- an emulsifier mixed with soil that looks like hard dirt. Or in places there could be porous pavers to catch water. Traffic lanes remain 11' each.

Using old maps delineating the highway's 80' right of way (they show vanished stone walls and an orchard south of the church), Deans announced that "we can do a lot with that eighty feet! DOT manages it, but it is ours." He also introduced a Vision Statement, which we will need when presenting our plans to the

DOT, and suggested an interpretive kiosk on village history, a farmer's market plaza, a bus shelter, and a community garden in the vacant lot next to the Sala. (A garden is already in the new mailbox park plan; see front page.)

As you can imagine, a lively discussion followed. The central traffic island was nixed by consensus as dangerous and "too suburban," though it was suggested that there might be two islands, one at each end of the corridor as traffic approaches the center. Parking in front of the church for handicap access was a major issue. The right of way goes right up to the church's stone wall. General parking so close to the road is considered hazardous and would be better at the sides. Bollards to protect the church from traffic were also nixed, though some lower barrier, humps, or ridges may be necessary.

For the pavement change, which will be a distinctive part of the plan, the community suggested that "adobe colored" pavement might be extended all around the church. (Much of this will be a question of money, of course.) Maybe there should be less trees (someone is going to have to maintain them and this isn't Tesuque); some could be replaced by a line of chamisas like those in front of Romona Scholder's home.

The tiny town of Lincoln, NM, was raised as a precedent for Galisteo. Hutchinson remarked that the DOT was learning a lot there about how to preserve the character of historic villages. MainStreet has also talked to Tim Wilms so that the new design will be friendly to the coming coffee shop; vehicle access will be on Highway 41 at Dorothy Vyse's former house.

Hutchinson said that speed cameras are becoming popular and might soon go rural; the trouble is (surprise) that they increase rear-ending. He also said that sometime in the future a bypass around Galisteo may actually happen!

We should start with our dream plan, said Deans, even though we won't get everything we want; there will be compromises down the line. This was an unfunded special project for Galisteo. Although MainStreet will provide us with a revised post-meeting plan and the powerpoint, the ball is now in our court.

HOW YOU CAN HELP THE GVFR (1)

All small local fire volunteer departments need help. For the dedicated volunteers who become firefighters and EMTs, it is a true calling, demanding a major commitment of time and energy. But for the rest of us, there's still plenty that can be done. Here EL PUENTE begins a series on the smaller ways community members can be a monthly part of our admirable GVFR.

Ken Spicocchi lives in Eldorado but he is a veteran firefighter and a crucial member of our department, in charge of trainings. He says there is always something to do and never enough time. Anyone with a couple of hours to spare can take the burden off the overworked regulars.

For instance, this month's time-consuming chores involve testing Galisteo's 20 hydrants and some 2000 feet of hose. Community members can help by weedwhacking around hydrants and helping check the hoses. Or washing the station's windows, or doing a little office work. If you have an hour or two on a Saturday, on Tuesday night or Thursday morning, drop by the station to see what's needed. It can be a lot of fun too.

EL PUENTE SPONSOR: PASSIVE SOLAR BUILDERS (CHARLIE HOLLOWAY)

GALISTEO CLASSIFIED

ADS ARE FREE, AND FOR GALISTEO RESIDENTS ONLY. Call 466-1276 by May 5th for next issue.

FOR RENT

500 sq. ft. art studio, \$325 mo., call Stuart, 466-4153.

Small casita: washer drier, no smoking, great views, \$650 mo., call Liz, 466-6003.

WANTED

Very wide TV monitor, for use at Free Exercise Class at Community Center. Would be great if it had DVD player. Will pay reasonable amount. Call Amy Tremper, 466-9871.

Your leftover stones or dirt to help build landscaping berms in front of the Community Center, Call Barb, 466-3219.

SERVICES

Need help with errands in Santa Fe? As your personal assistant, I can shop, pick up prescriptions, and do other small tasks, or drive you to town. \$20 per hour from Galisteo, gas included. I also do light garden work, feed pets, and forward mail. Call Harmony, 466-3932.

Monday and Friday FREE Exercise Class, Call Anna, 466-8967 or Amy, 466-9866.

Get a jump on your spring growing season with a **"Grow Y'own" hooped, raised bed.** Call Ken at 466-0393 or 490-1849 for details.

Barbara King Pottery: functional and decorative, handcrafted with a variety of glazes on white stoneware. 466-3219.

Yoga: relax the mind, enliven the body, release tension, build strength and flexibility. Individual sessions and small group classes. Linda Braun, 466-8488.

Manual Therapy incorporating modalities such as Roling, Thai massage, Shiatsu, Trigger Point therapy, and more. \$50 per hour for a limited time. Cloud Hall, 670-7771, or 466-3375.

Rocky Mountain Handyman. Can do anything! Call Mark Lyons, 629-9323.

Home Care: when you're away: security checks, mail collection/forwarding, plant care, etc. Linda Braun, 466-8488.

Remodelling, additions in adobe and frame, mud plaster, stonework, metal lathe plaster, flagstone and building maintenance, Sina Brush, 577-4045.

Computer tutor/personal assistant. Contact Paige, 466-1002.

MacTech Support and Tutoring, photo digitizing and organizing, and Photoshop lessons: Tom Martinelli, 466-1020.

Beth is available for **petsitting in Galisteo**, 470-7606.

Need a pet sitter or house sitter? I will do short or long-term care, occasional overnights, reasonable rates, refs. available. For info, call Maria, 466-8930.

Dog-Walking. Will check on your pets during the day: Marghreta, 466-4457.

White Dog Cyclery: Certified bicycle maintenance/repair. Your family bicycle service. All bikes, repairs. Call Frank, 466-2121.

Saturday Art Classes for children and adults, Retablos and watercolors. 10-12AM or 2-4PM, weekdays or weekends. Catherine Ferguson. 466-2765.

Native Bloom, Landscape design/maintenance. Linda, 466-4658.

Common sense, gentle dog-training: house manners, management problem-solving at your home; also limited boarding. Twenty years experience. Call Evelyn, 466-1875.

Barbara Holloway Fine Handweaving scarves, shawls, vests, jackets, handwoven of luxurious chenille. 466-2118.

Linda Vista Stables: Beginner western riding for children and adults; 1-2 hr. trail rides; short-term boarding. 466-8930.

Passive Solar Builders: Locally owned general contractor since 1980. Quality home construction, renovations: 466-2118.

Ron Helman, Life Coach: see www.ronhelman.com; 466-1919.

Like things done right? Welding, flagstone, moss rock, fountains, plumbing, sprinkler, and drip systems plus Gopher Control. David Maestas, cell 670-8608 or 660-9715.

Need a permit? Computer Aided Drafting Support for architects, engineers, contractors etc. Adan Cárdenas, 466-8967.

Galisteo Woodworks: for your custom woodworking needs. Furniture and furniture repair. Antonio Chavez, 466-3601.

SB Lejo/Sina Brush is taking special orders for antique Mexican furniture. Call 577-4045.

Carpentry: Custom closets, hand-carved tables, benches, gates, doors, 35 yrs. experience, local refs. Onesimo, 466-1430.

Dave's Auto Repair: tune-ups, oil change, restoring, minor repairs, restoring, painting. Local refs. Free estimates: David Montoya, 466-2097.

Nick's Landscaping, Brush Removal, and Garbage Collection. Call 231-6352.

+++ EL PUENTE DE GALISTEO+++

Editor: Lucy R. Lippard. **Contributors:** Linda Braun, Isabella Gonzales, Richard Griscom, Jan Saunders. **EL PUENTE logo** by Cara Lee. **Printer:** Allegra. **Send letters, comments, suggestions, contributions to EL PUENTE, 14 Avenida Vieja, 466-1276. NEXT DEADLINE: May 5th. TO BE A SPONSOR: make out check to GCA for \$75, note "for newsletter," send to address above.**

***THANKS TO PHILIP AND JUDY TUWALETSTIWA
FOR SCANNING AND SCALING.***

El Puente de Galisteo
14 Avenida Vieja
Galisteo NM 87540