

ISSUE #116

SUMMER 2008

JULY 19-20th, RODEO DE GALISTEO: Parade on Via La Puente: Saturday, 11AM.

JULY 5th: SATURDAY COFFEE, hosted by Judy and Phil Tuwaletsiwa.

FROM THE FIRE DEPARTMENT: Be prepared for the possibility of burn restrictions: **NO** Burning, **NO** burn permits, **NO** dangerous fireworks (some allowed), **NO** outdoor smoking.

GALISTEO KIDS' BOSQUE BIRD WALK

Three youthful birders raised their binoculars to view over 40 species of birds in the Galisteo Bosque on May 3rd. Pictured are Ezra Sage (Linda Braun's son), Joseph Garcia (Priscilla Montoya and Joe Garcia's son) and Max Murphy (Kathleen and Steve's son).

Adults participating were Richard Griscom, Catherine Ferguson and Jan Saunders. The group counted more than 65 species for Galisteo's part in the Santa Fe County Bird Count. Some of the unusual species sighted were: Winter Wren, Long-billed Curlew, Swainson's Hawk, Common Yellow-throated Warbler, Yellow-breasted Chat, Rose-breasted Grosbeak, and a first-year male Summer Tanager. **(Photo: Anna Cárdenas)**

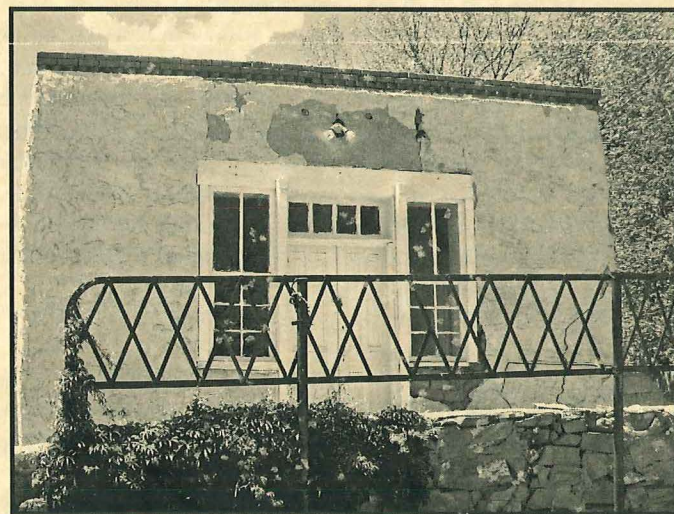


AUGUST 3rd 4:30-7PM at the Galisteo Inn: GCA sponsors a fund-raising silent Art Auction to raise money for the legal defense fund associated with the suits filed by two individuals trying to Quiet Title land in Galisteo they do not own. Donations of works by local artists will be solicited. Music by a "surprise" local group. Wine, soft drinks and finger food will be available.

WATCH THE BULLETIN BOARD for dates for: **CHILEFEST** and **ANNUAL YARD SALE** (Sept.).

RENTED

The "For Rent" sign in front of the old (1899) dance hall, or La Sala, across from the church, was up for only a week in May when Galisteo's local artists approached the owner, the Saint Joseph's Society, with the idea of a gallery/art center for local artists. The group, calling itself "La Sala de Galisteo," has agreed to restore and maintain this cherished landmark. (See article on its history by Anna Cárdenas in EL PUENTE #37, Sept. 2000). The group is planning to open the doors again to the community for fun and – yes – maybe a 10-cent dance! More information coming soon. *(Contact: Barbara King, 466-3219.)*



GCA ELECTIONS

On May 8th, the annual Galisteo Community Association election meeting was held. A quorum was achieved and five proxies were recognized. Most of our faithful Board was willing to serve another term: **Freddie Cárdenas**, President; **Kathleen Murphy**, Vice President; **Linda Braun**, Secretary; **Corinne Anaya**, Treasurer. Board members are **Anna Cárdenas**, **Rob Civitello**, **Harmony Hammond**, **Barbara King**, and newly elected member **Janice Wall** (to fill out Amy Tremper's term). There was no competition for the honors. All were elected or re-elected by acclamation.

No-one volunteered to be the Alternate Board member for one year, so that seat remains vacant. (Maybe the doors should have been locked until a hand went up...) Anyone interested should contact a member of the Board.

Two student filmmakers from the Community College presented to the community their *Milagros* project (see EL PUENTE, last month), which will be shooting June 29th to July 3. *Sex and Lies in Sin City* is shooting right now at Quatermill Farm. *Legion* is finishing up, and another movie is coming soon to Cerro Pelon Ranch. Tamalewood is alive and well in Galisteo.

GALISTEO WATERSHED PARTNERSHIP FORUM

Muriel Fariello

On Friday, May 9th, I attended the quarterly forum of the Galisteo Watershed Partnership at the Community College to review available information regarding Wildlife in the Galisteo Basin. Representatives for Udall and Bingaman were in attendance.

Three keynote speakers presented data identifying the many species of birds, snakes and animals residing in the Galisteo Basin: Oscar Simpson (NM Wildlife Federation), Ann Watson (Santo Domingo Pueblo), and Craig Chapman (NM Wilderness Alliance). Each speaker outlined their findings and showed maps indicating migratory routes as well as providing an overview. Most of the information did not focus on the fragility of the animals and birds being challenged by developers and other ecological shifts in the environment but rather identified the diverse number of them and areas they cover.

Clearly, we need to take measures now to help the various species survive and prosper. The Piñon Blue Jay population has been on the decline since the Piñon trees were decimated by beetles brought on by the drought. Some estimate their numbers to be down by 50%. There is need for more data on the bird population so I asked Jan Saunders to supply her extensive knowledge to Rosemary Romero, Chairwoman for this event.

It is clear that before permits are granted for any kind of mining exploration or development, more studies will have to be conducted to insure no further negative impact to the wildlife that call the Galisteo Basin home.

The next meeting is Friday, June 20th, 8:30-12:30, at the Santa Fe Community College, room 223. The subject will be "How Can We Work Together on Wildlife Conservation for the Galisteo Basin?"

For more information you can contact Earth Works Institute, the organizer of these forums, at 982-9806; or see www.galisteowatershed.org.

STEWARDSHIP GROUP MEETING

Richard Griscom

On May 20th, the Galisteo Stewardship Team met again with representatives of Earth Works Institute (EWI) to discuss activities to restore and protect wetlands in the Galisteo area. (EWI has been working on wetlands restoration in Galisteo since 1998.) Jan-Willem Jansens of EWI discussed a proposal being prepared for additional funding over the next four years. If it is successful, activities could begin as early as September and would include erosion control, training of community members in water monitoring and water data analysis, assistance in the development of a Youth Corps, and community activities such as Arbor Days featuring tree-planting. Jansens said that EWI's chances of getting funding for these activities are "very good."

The group then discussed other activities that could be planned for the next few months. Jill West reported that Patrick Torres of the County Extension Service is available to give a talk on land reclamation, vegetable gardening, and landscaping with native plants. This might be scheduled to coincide with one of the GCA Saturday morning coffees. Eliza Kretzmann said that Steve Vrooman (both of EWI) might present a half-day workshop in August on native trees and other vegetation (including planting some trees) and on removal of non-native species (including some actual removal).

The next meeting, also a potluck, will be held June 26th, 6-8PM at the Community Center. All interested community members are encouraged to attend.

THE SNAKES ARE HERE

Snakes are fascinating and beneficial creatures, so long as we leave them alone. Rodent control is their specialty. Since only 1% of venomous snake bites in the U.S. are lethal and 60% of people with Hanta Virus die, you stand a better chance with a snake than you do with a deer mouse. (However, new data shows rattler bites are getting *more* venomous.)

Most rattlers are not naturally aggressive and will try to warn you. They don't want to see you any more than you want to see them, but they don't like being surprised. It's ok to admire a snake from a distance if you don't annoy it; if you are too close, step away cautiously; don't jump. To avoid being bitten, wear boots and high-top hiking shoes. Use a tool to uncover things.

Most importantly, watch where you are walking and putting your hands. Do not try to kill, catch, or harass a snake. Know your species, so you can identify the dangerous ones. (The non-poisonous Bullsnake/Gopher Snake, an efficient rodent feeder, is often mistaken for a rattler.) If you are bitten, get medical assistance quickly. Your best friends are a phone, a friend, and access to a vehicle. Remain calm and as still as possible; remove rings, bracelets or anything that might restrict blood flow. If bitten on the arm, hold it at heart level until you get to a hospital. *Do not* make cuts over a bite or puncture, suck the venom out, or use electric shock, ice or ice water. (Information from snake expert C.J. Carmen)

LAND/WATER UPDATES

Although Peirce Clayton apparently succeeded in obtaining title insurance on the "OK Corral" (property at La Otra Vanda/ Avenida Vieja), it is no longer publicly listed. The GCA's lawyer is now working on "bifurcation" – separation of the original case from that of counterclaims for court costs, which involves an order from District Court. In the event of another appeal, this could go on and on. (See box on page one re art auction to help cover costs.)

*

The Galisteo Water Association continues to protest Eldorado's water rights and new well on US285, not yet in use. Eldorado's wells #9 and 10, near the Galisteo Creek in Lamy, have been over-pumped due to Eldorado's recent water shortages. Paltry mountain runoff this year has made these wells even more vulnerable. An article in *The New Mexican* (6/5) warns that continuous pumping "could result in permanent damage to the aquifer" – which is Galisteo's water source.

HOW THE GALISTEO DISTRICT VOTED

June 3rd was primary voting day and 67 people from Galisteo and surrounding areas cast their ballots at the Community Center. 54 of them were Democrats and 50 of them voted for Tom Udall, running unopposed for the US Senate nomination.

Ben Ray Luján, who won big for the US Representative nomination, was on top here too with 29 votes to Don Wiviott's and Benny Shendo's 7 each, Harry Montoya's 5 (and 0 for Adams and Martin).

For the PRC, Throne got 20 and Block 8 (but Block won the election); Maestas 4, Gallegos 4, Campos 12, Rodarte 2.

In the District Attorney race: Campbell 17, Pacheco (who won) 24, and Salazar 8.

County Clerk: incumbent Valerie Espinoza won big and beat Martinez in Galisteo, 44 to 7. County Treasurer: Victor Montoya, the winner, took 32 of our votes to Rubin's 15.

The Republican side included a presidential primary: John McCain 11, Ron Paul 2. For Senator, Steve Pearce (who won) got 9 to Heather Wilson's 4; for U.S. Rep, Gonzales got 6 to winner Dan East's 4.

PEDACITOS/BITS AND PIECES

Isabella Gonzales and **Harmony Hammond** were both included in a list of 150 emerging and influential artists in *The Santa Fean* (April-May). Gonzales's *2 cents worth* is in the exhibition "Feeling the Heat" at the Deutsche Bank Gallery in New York City. She is also showing a collaboration with Betsy Williams in "Sympathetic Resonance" at the Rift Gallery near Embudo. Hammond is one of the four artists in "Tuff Stuff" at the New Mexico Museum of Art (6/20-9/7).

Judy Tuwaletstiwa has work in "Flux" -- the contemporary glass show at the New Mexico Museum of Art.

New Mexico Magazine featured **Woody Gwyn's Abiquiu** in its June issue, in homage to Georgia O'Keeffe's landscapes.

From *The New Mexican*, May 22, 1908: "**José Ortiz y Pino**, a businessman and sheep raiser of Galisteo, arrived in the city today and has a room at the Claire."

Times New Roman, the typeface used in EL PUENTE, was recently described by an expert as "sexually ambiguous, appearing to have the authority desired by men, coupled with the organic, humanistic flair that appeals to women." Our type conveys "trustworthiness, making it a favorite with lawyers of the non-ambulance-chasing echelon and respectable traditional businesses." Who knew?

There have been a series of sightings of a large male **Bobcat** in the village; at one point he came right up to a screen door, staring in at the resident housecat – with culinary, not romantic, interest.

Now we can worry not only about **gas, oil, and gold extraction**, but also about **coal**. Exploration is going on around Madrid (the whole town lies over coal rights). On our side of the Basin, there is an old coal mine right next to **Pueblo Blanco**.

Robbie Dobyns, nephew of Alva Simpson, whose 27,000 acre-ranch was the base for the Eldorado subdivision, recalled in the June *Santa Fe Real Estate Guide* how Galisteo Basin ranchers use to cooperate, including Archie West, **Bluford Thornton**, **Phillip McKee**, and **Harp McFarland** (long-time manager of the San Cristobal Ranch).

FROM THE PLANNING COMMITTEE

The Galisteo Community Planning Committee would like to thank everyone who came to the community meeting in April to support our ongoing work. As a result, two Galisteo residents came to consecutive committee meetings and successfully pleaded their cases for minor adjustments within the two recommended Traditional Community zones.

The Road Committee continues to struggle with the issue of the two WPA bridges. Katherine Slick, State Historic Preservation Officer (SHPO), has written to the Federal Highway Administration citing an "Adverse Effect" on Bridges #1782 (over Galisteo Creek south of the village) and #1814 (over San Cristobal Arroyo) of the DOT's plan for "rehabilitation." Many of us supported rehabilitation when we were unaware of the other options now presented by the Historic Preservation Department (and Dorothy Victor, who works at HPD and is on the GCPC).

Bridge #1782 is already a "contributing" structure within the Galisteo Historic District. The DOT's plans would result in the loss of essential historical features, making both bridges ineligible for the National Register. Detrimental effects of "increase in traffic, vibration, and other actions" on old adobe houses built on stone or no foundations are also cited.

The DOT has committed to look at the "cumulative impact" of construction, which includes a full environmental impact process. The highway report will be concluded in late August and more consultation will take place; final decisions will not be made in the next 6 months. In early June the DOT smoothed out the approaches to both bridges.

The GCPC will consider recommending that all of Highway 41 through the Basin be designated as a "scenic byway." Preservation of the wetlands below the bridge is also at issue, but this is not about wetlands versus history; both must be addressed.

HPD welcomes any comments. For information call Harvey Kaplan (827-3971) or Katherine Slick (827-4044).

REMEMBER! EL PUENTE TAKES A BREAK IN JULY AND AUGUST. BACK IN SEPTEMBER.

If you are a full-time resident of Galisteo and have not been receiving this newsletter, call Isabella Gonzales (466-2218). If you are a part-time resident, please send ten first-class stamps to EL PUENTE (address below, right)

**EL PUENTE SPONSOR:
PRISCILLA HOBACK**

GALISTEO CLASSIFIED

ADS ARE FREE, AND FOR GALISTEO RESIDENTS ONLY. Call 466-1276 by Sept. 5th for next issue.

FOR SALE

Siri Hollander rebar horse sculpture, \$1459. Sina, 577-4045.

John Conell Plaster Flamingo. Paper cutter. Easel. Frames. Slide projector, you name it. View by appointment, 466-6003.

WANTED

Looking for Galisteo housesit, July 6-26. Former Galisteños Valentine and Louis Riddell are also open to house-trading; they live in North Berkeley in the "gourmet ghetto." Call 510-558-3324 or mckayriddell@comcast.net.

Small space (c. 20 x 20') wanted for blacksmith shop. Mark Russell, 466-0661.

Mature, responsible woman **seeks summer house-sitting** in Galisteo area; loving care of pets and gardens; local references. 520-896-3315 or pwbarton@theriver.com.

Looking for permanent ranch or farm work and cleaning, etc. Local recommendations. Martin and Maria Elena, 490-990.

SERVICES

YOGA: relax the mind, enliven the body, release tension, build strength and flexibility. Individual sessions and small group classes. Linda Braun, 466-8488.

Rocky Mountain Handyman. Can do anything! Call Mark Lyons, 466-2157.

Call Linda Braun, 466-8488 for **YARDWORK:** weeding, watering, mulching etc. and **HOME CARE** when you're away: security checks, mail collection/forwarding, plant care, etc.

Remodelling, additions in adobe and frame, mud plaster, stonework, metal lathe plaster, flagstone and building maintenance, Sina Brush, 577-4045.

Computer tutor/personal assistant. Contact Paige, 466-1002.

Mac Tech Support and Tutoring, photo digitizing and organizing, and Photoshop lessons: Tom Martinelli, 466-1020. Beth is available for **petsitting in Galisteo**, 470-7606.

Need a pet sitter or house sitter? I will do short or long-term care, occasional overnights, reasonable rates, refs. available. For info, call Maria, 466-8930.

Petsitting, call Marghreta, 466-4457.

White Dog Cyclery: Certified bicycle maintenance/repair. Your family bicycle service. All bikes, repairs. Call Frank, 466-2121.

Saturday Art Classes for children and adults, Retablos and watercolors. 10-12AM or 2-4PM, weekdays or weekends. Catherine Ferguson. 466-2765.

Native Bloom, Landscape design/maintenance. Linda, 466-4658.

Common sense, gentle dog-training: house manners, management problem-solving at your home; also limited boarding. Twenty years experience. Call Evelyn, 466-1875.

Barbara Holloway Fine Handweaving scarves, shawls, vests, jackets, handwoven of luxurious chenille. 466- 2118.

Linda Vista Stables: Beginner western riding for children and adults; 1-2 hr. trail rides; short-term boarding. 466-8930.

Passive Solar Builders: Locally owned general contractor since 1980. Quality home construction, renovations: 466-2118.

Ron Helman, Life Coach: see www.ronhelman.com; 466-1919.

Like things done right? **Welding, flagstone, moss rock, fountains, plumbing, sprinkler, and drip systems plus Gopher Control.** David Maestas, cell 670-8608 or 660-9715.

Need a permit? Computer Aided Drafting Support: for architects, engineers, contractors and homeowners. 4 yrs. experience/local references. Call Adan Cárdenas, 466-8967.

Galisteo Woodworks: for your custom woodworking needs. Furniture and furniture repair. Antonio Chavez, 466-3601.

SB Lejo/Sina Brush is taking special orders for antique Mexican furniture. Call 577-4045.

Carpentry: Custom closets, hand-carved tables, benches, gates, doors, 35 yrs. experience, local refs. Onesimo, 466-1430.

Dave's Auto Repair: tune-ups, oil change, restoring, minor repairs, restoring, painting. Local refs. Free estimates: David Montoya, 466-2097.

Nick's Landscaping, Brush Removal, and Garbage Collection. Call 231-6352.

+++ EL PUENTE DE GALISTEO+++

Editor: Lucy R. Lippard. **Contributing Editors:** Linda Braun, Isabella Gonzales, Richard Griscom, Jan Saunders. **EL PUENTE logo** by Cara Lee. **Printer:** Allegra. **Send letters, comments, suggestions, contributions to EL PUENTE, 14 Avenida Vieja, 466-1276. NEXT DEADLINE: Sept. 5th. TO BE A SPONSOR: make out check to GCA for \$75, note "for newsletter;" and send to address above.**

El Puente de Galisteo
14 Avenida Vieja
Galisteo NM 87540

LA MANCHA

RESTAURANT + BAR

at **THE** +
GALISTEO
+ **INN** +1703+

Presents

Music Under the Cottonwoods

All Summer Long - Every Thursday Night 6:00-9:00pm - Starts June 12th

+

Featuring

Local sensation **Nacha Mendez & Friends**
6/12, 7/10, 8/14, 9/4

Jazz chanteuse **Susan Abod** with **Lewis Winn, guitar**
6/19, 7/24

Flamenco... **Joaquín Gallegos** with **Julia Chacon**
6/26, 8/21

Spanish Classical Guitar ... **David Yard**
7/31, 8/28

James Maldonado Trio ... Bossa Nova
8/7

Savor

Special 4th of July - Friday

Rodeo de Galisteo Weekend

Saturday July 19

Don & Victoria Armstrong, guitar, banjo, keyboards
'Rodeo Favorites of the Southwest'

Lawn and Cantina open 5pm Diner served 6pm

Dinner Reservations 6 pm-8:30 pm

\$10 cover

+ +

Reservations 466-8200 GalisteoInn.com

Over for Cantina Menu

Cantina opens 7 nights a week starting mid June!! Call for more info!!!



Timothy Willms,
Talus Wind Heritage Meats, Inc.

Want to let our Galisteo neighbors know that our natural,
free-range local lamb cuts are available for sale.
Help us keep up the Northern New Mexican slow food
movement momentum.

Please try our lamb at the following Santa Fe restaurants

Amavi	Zia Diner
Café Pasqual's	SantaCafe
Pyramid Café	El Dorado Hotel

And locally at La Mancha Restaurant at the Galisteo Inn.
Also we are looking for local Farmers and Ranchers who
need to have their farm-raised animals custom-processed.

Our Mountainair USDA Inspected slaughterhouse will
humanely slaughter your Lamb, Beef, Goats, Turkeys,
Rabbits & Chickens & package your meat to your
specifications

For further information and how to order our
custom cuts of meat for your own table:

www.taluswindranch.com
or Tammy at (505) 250.9767