

EL PUENTE DE GALISTEO

ISSUE #98

OCTOBER 2006

GOOD ART AND GOOD FOOD: SATURDAY & SUNDAY OCT. 21-22: GALISTEO STUDIO TOUR. 10-5. Check out the preview on www.galisteostudiotour.org. MAPS available at church both days; Saturday lunch and Sunday brunch will be served 11:30-2 at the Galisteo Inn and there will be food at other stops along the way.

GAFFORD/CLAYTON HEARINGS: NOT OVER YET

On September 7th, Judge Daniel Sanchez approved the motion for summary judgment (dismissal) in the Morgan Gafford land-grab case. Defendants were the GCA, the Singleton family of San Cristobal Ranch, Santa Fe County, and a long list of villagers. Over 20 Galisteños attended the hearing.

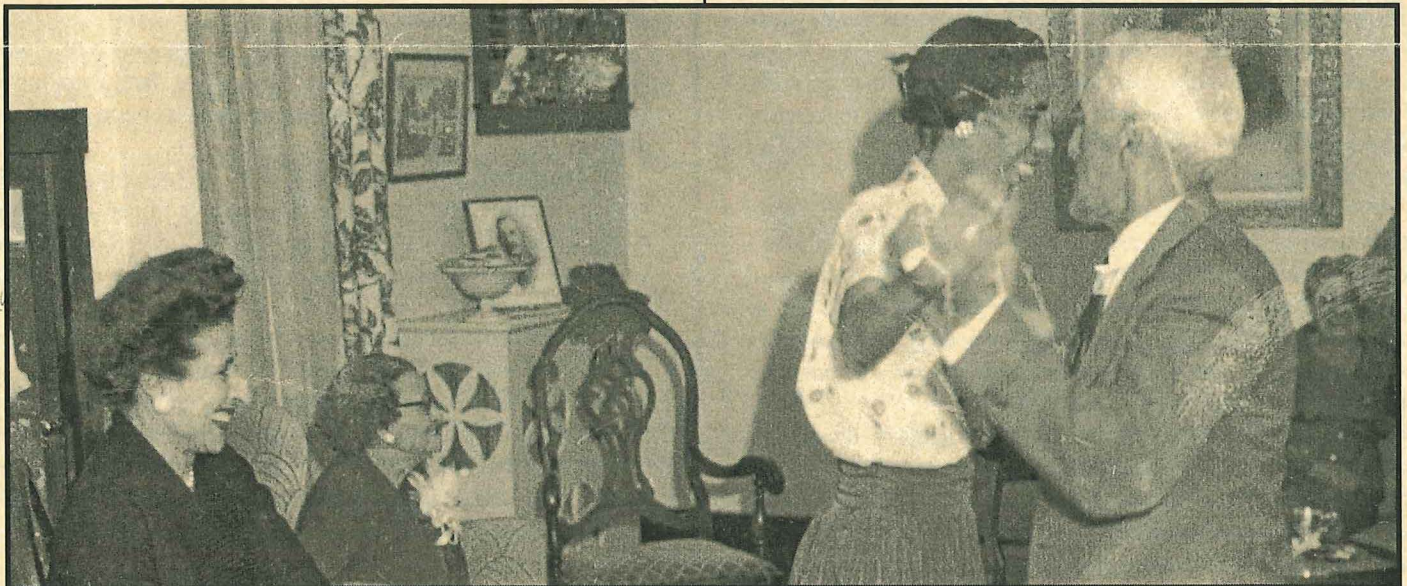
Gafford was "dumfounded" at the decision, asserting that "these people have ganged up on me... I have the deed to this land." The basis for his claim was a deed from Antonio P. Anaya which he previously had admitted was invalid. He stated that he did not know where the land actually was but assumed it was the site where he has lived (called the "tipi site" in court) for over twenty years. Judge Sanchez decided that Gafford's "color of title was not in good faith." A quiet title depends on pre-existing ownership, which Gafford could not prove. However, the question of who *does* own the land in question, said Sanchez, "has nothing

to do with this case." Benjamin Allison, the Singletons' attorney, mentioned complaints against Gafford for "malicious abuse of process."

On October 6th, Peirce Clayton's case was heard by Judge Jim Hall. Clayton, an Eldorado realtor, produced what he called the whole chain of title, from the "250-acre exception" of 1907. Again the all-purpose "Anaya deed" was central to claims along the Bosque and possible encroachment on Harmony Hammond's land. Judge Hall said that trying to quiet title with no proof of ownership has put the process "all out of whack. How am I supposed to know where the land is?" he asked in frustration. "You've really confused this. I strongly advise you to get a lawyer. Your missteps are costing these people money."

Our lawyers noted that Clayton has no sworn testimony and that he had come up with a new deed only after all the discovery period was over (last May). Allison said he was not asking the court to say whose land it was, but the Singletons have the best title. Finally, Judge Hall deferred final ruling for 14 days, during which Clayton must respond with the whole chain of title. If he doesn't, the case will be dismissed. Stay tuned....

by Mela Martin
Below: Concha Ortiz y Pino de Kleven watches Bluebell (Brauglia) Jackson Hurtado dance with Antonio Chavez in Galisteo, c. 1950?



CONCHA

Maria Concepción Ortiz y Pino de Kleven, born in Galisteo in 1910, died Sept. 30th in Santa Fe. After *rosarios* in Albuquerque and Santa Fe, her funeral mass was held at St. Francis Cathedral in Santa Fe on October 6th. Historian Marc Simmons told those assembled that "she was legendary because of the quirky nature of her contentiousness."

Concha, as she was known all over the state, lived in Galisteo and Santa Fe as a child. When she was 21 she traveled with Senator Dennis Chavez for Franklin D. Roosevelt's presidential campaign and in 1941 she made national history when she became the first female Whip of a state legislature. She served three terms in the Legislature and devoted much of her life to good works, including bilingual education, women's rights, and Spanish traditional culture.

In 1929, with the support of her father, José Ortiz y Pino I ("the last *patrón*") Concha started the Colonial Hispanic Crafts School in Galisteo to boost the local economy by encouraging weaving and furniture making, but it failed to attract tourists. On Oct. 22, 1933, she revived the *Corrida de Gallo*, or rooster pull, in Via La Puente, with a "Fiesta Dinner and Baile for Benefit of Galisteo Vocational Crafts School." It featured "Galisteo Boys vs. Santo Domingo Indians" in an ironic echo from the past.

Concha had no children. The land she owned in Galisteo (the "OK Corral" of the Gafford case) is reportedly bequeathed to the Church. *Concha!* -- her 2004 biography by Kathryn M. Córdova, includes her memories of a Galisteo childhood.

MOVE OVER, GALISTEO CREEK

On September 5, Jan-Willem Jansens of Earth Works Institute (EWI) held a meeting of homeowners along the Galisteo Creek to update us on the watershed restoration project. EWI has worked in the watershed for eight years now, with state funding four of those years, two and a half of them spent inventorying the Basin's wetlands.

The creek, says Jansens, is relatively healthy, especially at its southern reach within the village, but it would be better if it could be pushed back to the western bank and into the old oxbow, now a large wetland just under and to the west of the route 41 highway bridge south of the village. EWI proposes a large-scale project to reroute the river back into this former meander, where it would follow old channels and cliff-cutting on the east bank would be diminished. The salt (alkali) that is settling in the river bottom would be flushed out, making it a better home for willows and cottonwoods.

The Galisteo Creek, exceptionally silted up, is higher than the bottom of the San Cristobal Creek (formerly known as the Arroyo Atascoso) which joins it below the bridge. So erosion is pushed back up into the village area. Some of this is due to the destruction many years ago of the big acequia at Los Marias (now Saddleback and Vista Clara), There was once a "lake" by the hogback on what is now BLM land.

Wetlands function as a sponge. Their health is extremely important for the land around them. To determine their health, soil, vegetation and hydrology has to be examined. UNM, the State EPA, and NMDOT's environmental division are all involved with EWI's project. If the wetlands could be improved,

Jansens suggests, the carrying capacity of water in the village would be improved.

Clyde Peña, who was raised here, recalled much greater flows in the past, and also his uncle's stories of the river taking the bridge and a two-story house owned by Anayas. Sandy Duran (Clyde and Mary Peña's daughter) has bought the Light Institute, originally family land, and wondered if there were alternatives to this major project. A lot depends on what the DOT does about replacing the bridges. (*See "Roads," p.3.*)

It was also noted that EWI would work on a conservation easement with the Santa Fe Conservation Trust (our new neighbor Matthew McQueen is its program director), but only if there were public access, and traditional uses continued; those getting their water from the creek could continue to do so.

EWI will be asking for donations and volunteers to help with the rerouting projects. If you were not at the meeting, and would like to receive a copy of Steve Vrooman's report: *Assessment and Plan for the Creation, Restoration and Protection of Wetlands in the Galisteo Watershed*, call 982-9806.

NEW TO GALISTEO

Kristen Siemon

When I wake up in the morning, I am surprised to find myself in Galisteo. I open my eyes and realize that I am here in a darkened village, a moonlit and star bright place, noisy with crickets and barking dogs and the occasional low hum of a compressor. Guests remark on how peaceful it is here, where, instead of the wee-hour moanings of a garbage truck, the February raucous of birds nearly deafened me.

In San Francisco I threw open the drapes to a view of metropolis and the crawl of cars on the Bay Bridge. Here I look out my kitchen window and see Denise Lynch riding by on her horse with another one in tow. Her dogs follow, jumping in and out of our yard. Our dog Red barks at them. In the city, we didn't have a dog, and now we couldn't live without her. She got away from us one evening and ran across the bridge and down to the river. I am always chasing dogs: Bella, the bouncy black Lab who charges at you like a bull and then stops suddenly at your feet in a dramatic cloud of dust, and Yoda, who comes to my door for a treat and a belly rub.

In our building in San Francisco the newspapers were always neatly set at our door. Here I go out into the dark, stepping on fallen peaches, and look for the paper's silhouette in the silvery dawn.

Confession: I miss my walk to work and stopping along the way for a coffee. But I have been more than compensated when, on the occasional Sunday morning, Priscilla's sign is out, Gallery Open, and Denise makes me an espresso served in a cup made by Priscilla herself.

I have cursed fallen fruit and a bumper crop of ragweed and the fact that my skin is becoming one with a lizard's. But I am happy here, standing on the bridge with neighbors to watch the Galisteo River run in muddy rapids, sharing a gate with our friend Candyce so that her dog Webster can come over each morning to play with Red. Happy to have been the guests of honor at the Snyder's party where almost an entire village fit into one room. (*Cont. p.3*)

In San Francisco the lights of the Bay Bridge look like a diamond necklace. In Galisteo the night sky looks like a diamond mine. It is the same sky the Indians watched and I regard this sky with respect. I await the thunderheads and their promise of rain and I am astounded when yellow flowers fill the yard.

The leaves are turning and we brace ourselves for winter. But we will light a fire and eat tamales, fill the bird feeders, and await the return of those noisy visitors. I used to be a visitor myself, not so long ago.

ROADS

The Galisteo Road Committee (Wendy Chase, Denice Pruett, Amy Tremper, and anyone else who wants to participate) are working hard and effectively keeping ahead of the game on changes to NM41 and CR42.

On September 26th, they held a meeting near the church with John Murphy from the State Historic Preservation Department (HPD), Laurel Wallace, Christina Khalso, Blake Roxlau and Project Director Dave Quintana from the NMDOT (Dept of Transportation) to review plans for rebuilding or doubling the two southern bridges and widening the road through the village. David Henkel from UNM, Andrew Jandacek from County Land Use, and Steve Vrooman from Earth Works Institute were also present, along with a few concerned villagers.

As we stood there, two oil tankers barreled through, supporting the committee's urgency about speeding and safety.

Murphy was urged to consider the damage done to old adobes by flying trucks, and the esthetics of the southern entrance to the historic village. The Galisteo Planning Committee's proposed restoration of the old plaza in some form will also have to be taken into consideration by the DOT. They suggests that we are very early, even premature, with our comments. They do not intend to start designing until at least the end of 2007. From previous experience, however, the Road Committee is well aware that only an early start can fend off a "prematurely" done deal.

The two old concrete bridges built by the WPA in 1936, when NM 41 blasted through Galisteo's traditional plaza, are protected; the one closest to the village is listed on the National Register of Historic Bridges. This may mean that a new bridge cannot replace but would have to parallel the old one.

The DOT insists that it cannot stop commerce on roads like 41, which is a "primary" arterial to I-40. But there are signs regulating truck traffic near Cedar Crest and elsewhere, and apparently alternative routes can be "suggested." The Committee asked to see early design drafts, which hopefully will not facilitate heavy traffic. There is some possibility that the road could be reclassified, so that truck traffic would be forced to take US 285 or I-25.

Vrooman took the meeting on a tour of the river bed beneath the bridge, where a DOT access road for environmental drilling had cut off water to the wetlands, which are the most important ones in the Galisteo Basin. It was promised that this would be fixed soon. But no other promises were made. This will be a long battle.

From the Committee: On October 5th, Denice Pruett and Amy Tremper met with Sarah Cottrell, Secretary of Energy and Environment in Governor Richardson's office to ask for her input. Sadly, on that same day, a mother and her baby were killed in Stanley in an accident with a fuel tanker. We hope our work may prevent another tragedy.

We hope to speak with our legislators after the November election to see if we can change the safety designation on our bridges, preventing tankers from crossing them. Some employees of the NMDOT say they are the worst bridges in the state and need immediate attention, while others say they are capable of carrying up to 86,000 lbs, which is the weight of 90% of the trucks crossing them now (according to the Holly Energy Plant Supervisor).

We are honored to do the footwork for our village, but we need your input. Please let us know if we may better represent your concerns. Call Denice (466-3601) Amy (466-9866) or Wendy (466-1004).

(Next month: the committee's work on CR 42)

RED-FACED AND FLYING LOW

Jan Saunders

What's this? Some new bird? No. Just me...caught red-handed and red-faced while speeding through the village on my way to work early one morning last month. I got my none-too-gentle comeuppance from a friendly neighbor, and was I ever embarrassed.

In my defense, I will add that I thought I was in the 45mph zone, but apparently I was still in the 35mph zone. It gets worse.

I was passing on a double line. How could I? What was I thinking?

Just after I slowed down, I realized I was approaching the spot where the spine dips down to the road. The exact spot where two years ago I saw a beautiful bobcat hit and killed by the car in front of me. Thanking my lucky stars that I was reminded to slow down, I glanced up ahead just in time to see a Great Horned Owl swoop low across the road and into the Bosque. Had I been speeding, that awesome bird and I would have been on a collision course.

A few days later (this time driving the speed limit), I passed within a few yards of a gorgeous Pronghorn buck walking along the edge of the road. The message came through loud and clear: SLOW DOWN. DRIVE CONSCIOUSLY. SHARE THE ROAD WITH WILDLIFE.

NB: Jan Saunders' book on birds of the Galisteo Basin is in its third printing and will be available at the fire station during the Studio Tour.

FROM THE STUDIO TOUR: A VERY SPECIAL THANK YOU to Studio Tour sponsors who are not listed on the map. Richard Buckley, Frank Croft, and Tom Ford all generously helped. We really appreciate all of the donations, which will help make this year's tour better than ever.

PEDACITOS/BITS AND PIECES

The **Garage Sale Tour** on Sept. 23rd was a great success. There were 19 stops and a lot of people came. **Maria Ortiz y Pino**, who spearheaded the sale from the GCA Board, says there could be another one in late spring or early summer if people want it. Call her at 466-8930.

Chris Griscom recently returned from Brazil where she delivered the keynote address for a world peace conference --a two-hour talk, in Portuguese, on how to activate Inner Peace in a tumultuous world. It was met with a standing ovation and a return appearance later in the day. Chris will be speaking at another world peace conference in Santa Fe in Spring 2007. She gives free peace talks to local communities and organizations, and taught peace studies at Nizhoni for 16 years.

Isabella Gonzales has new work in two group shows in Santa Fe: "BookWorm" at Hunt and Gather on Aztec St. and "Lost and Found" at the Patina Gallery on Palace Ave.

A feature on the Galisteo land grabs appeared in *The New Mexican* (9/8/06) with a large picture of **Dick Griscom** and the old bridge.

Two letters to the editor of *The New Mexican* concerning the **Galisteo Rodeo**: Merry Rivera wrote to say they had mislabeled the picture which was her son, Billy Joe Jackson, not Pat Harrison, a friend of his. The second was from Ardeth Baxter, replying to the comments of Audra Baca (Rudy Sena's daughter) and deploring rodeos' cruelty to animals.

County Commissioner **Mike Anaya** was among 45 leaders from across the state selected to participate in the 2006-07 core program of Leadership New Mexico

The **Vista Clara Spa** is for sale, although **Kaye Sanford** will reportedly retain an interest in it.

Galisteo is now enjoying *planetary* fame: An article on the Galisteo Inn chef (and GVFR member) **Enrique Guerrero** in *The New Mexican* noted that La Mancha was rated as one of the top 10 restaurants in the U.S. and one of the "82 best restaurants on the planet" according to *Bon Appetit* magazine!

EL PUENTE SPONSOR: ROMONA SCHOLDER

GALISTEO CLASSIFIED

ADS ARE FREE, AND FOR GALISTEO RESIDENTS ONLY. Contact: 14 Avenida Vieja or call 466-1276 by Nov. 5th for next issue. PLEASE CALL TO CONTINUE ADS.

FREE

Horse manure from Linda Vista Stables. Call Maria, 466-8930.

FOR RENT

Historic home, heart of village, 2 BR, 1B, \$1500 mo. 466-2111.

Old adobe apartment, 1BR, \$800 mo., incl. utilities. 466-1544.

SERVICES

Saturday Art Classes for children and adults, Retablos and watercolors. 10-12AM or 2-4PM, weekdays or weekends, \$150 for 6 weeks. Catherine Ferguson. 466-2765.

Native Bloom, Landscape design/maintenance. Linda, 466-4658.

Common sense, gentle dog-training: house manners, management problem-solving at your home; also limited boarding. Twenty years experience. Call Evelyn, 466-1875.

Acupuncture, herbal medicine, feng shui, nutritional counseling, massage. Dr. Connie Fisher, 470-9314.

Passive Solar Builders: Locally owned general contractor since 1980. Quality home construction, renovations: 466-2118.

Private Exercise Training and Power Circuit Classes with Ron Helman. Call 466-1919.

Nick's Landscaping, Brush Removal, and Garbage Collection. Call 466-0530 or 470-5973.

Like things done right? Welding, flagstone, moss rock, fountains, plumbing, sprinkler, and drip systems plus Gopher Control. David Maestas, cell 670-8608 or 660-9715.

Baby-sitting, petsitting and animal care, Mercedes, 466-7285.

Need a permit? Computer Aided Drafting Support: for architects, engineers, contractors and homeowners. 4 yrs. experience/local references. Call Adan Cárdenas, 466-8967.

Galisteo Woodworks: for your custom woodworking needs. Furniture and furniture repair. Antonio Chavez, 466-3601.

SB Lejo/Sina Brush is taking special orders for antique Mexican furniture. Call 577-4045.

Carpentry: Custom closets. hand-carved tables, benches, gates, doors, 35 yrs. experience, local refs. Onesimo, 466-1430.

Call Beth for **housesitting/petcare/vet runs/odd jobs/studio assistance/party help/you name it...** in Galisteo, 470-7606.

Electrical Concepts: Residential/Commercial/Industrial. Hansi Mohn and Michael Anaya, 988-8853.

Dave's Auto Repair: tune-ups, oil change, restoring, minor repairs, restoring, painting. Local refs. Free estimates: David Montoya, 466-2097.

One Room at a Time, Organize, Clear Clutter. Redecorate, Archive Memorabilia. Call Pamela Markoya, 466-9191.

Barbara Holloway Fine Handweaving scarves, shawls, vests, jackets, handwoven of luxurious chenille. 466- 2118.

Linda Vista Stables: Beginner western riding for children and adults; 1-2 hr. trail rides; short-term boarding. 466-8930.

+++ EL PUENTE DE GALISTEO+++

Editor: Lucy R. Lippard. **Contributing Editors**: Linda Braun, Isabella Gonzales, Richard Griscom, Jan Saunders. **EL PUENTE logo** by Cara Lee. **Printer**: Allegra. **Send letters, comments, suggestions, contributions to EL PUENTE**, 14 Avenida Vieja, 466-1276. **NEXT DEADLINE: NOV. 5. TO BE A SPONSOR: make out check for \$75 TO GCA, note "for newsletter," and send to address above.**

El Puente de Galisteo
14 Avenida Vieja
Galisteo NM 87540