

# EL PUENTE DE GALISTEO

ISSUE #96

SUMMER 2006

## SUMMER CALENDAR

**NEW GALISTEO ART GALLERY:** Saturday June 17<sup>th</sup>, 1-4:  
**Opening of Gallery of Local Artists:** "Healing Crosses of Galisteo & More" at 5700 State Rd. 41 (Linda Vista Stable, north of the village). Refreshments will be served. For info: Maria Ortiz y Pino, 466-8930. Gallery usually open 1-5.

**July** (date to be announced): Galisteo Community Association's Pancake Breakfast.

**July 15-16:** Rodeo de Galisteo; Parade through village, Saturday Morning.

**August 19<sup>th</sup>:** Annual Chili Challenge.

**July-August:** EL PUENTE'S ANNUAL VACATION. We'll be back in September.

**And mark your calendars: Oct. 21-22:** Galisteo Studio Tour.

## PLANNING COMMITTEE SEEKS CRYSTAL BALL

The Traditional Community Planning Committee meets twice a month at the Community Center. Community members not on the committee have often attended to see what's going on and put in their two cents worth. Feedback and participation continues to be welcome, although we cannot spend a lot of time backing up to explain the proceedings and non-committee members do not participate in actual decisions. There will be a series of town-hall meetings to present our ideas to the entire village as soon as we arrive at some concrete plans.

*The vision statement at right indicates where we are headed.*

For the last three months we have been struggling with several issues, among them the boundaries of the planning district, which are partly contingent on the participation of those owning the less easily defined outlying land up to the hogback and railroad. The core issue is density and lot size. We are considering three concentric "zoning" areas, with the central village continuing at the transitional community's allowable  $\frac{3}{4}$  acre lots or possibly going down to  $\frac{1}{2}$  acre lots to facilitate family transfers. However, this is not just about lot size but also about the carrying capacity of water and septic (and eventual community sewer/wastewater system).

Water is of course the most crucial issue. For several meetings, we have been discussing how to respond formally to the Commonwealth Conservancy's plan for the Thornton Ranch—the 300-acre "Village at the Galisteo Basin Preserve" (VGBP) with its eventual 965 living units, 150,000 sq. ft. of (cont. p. 2)

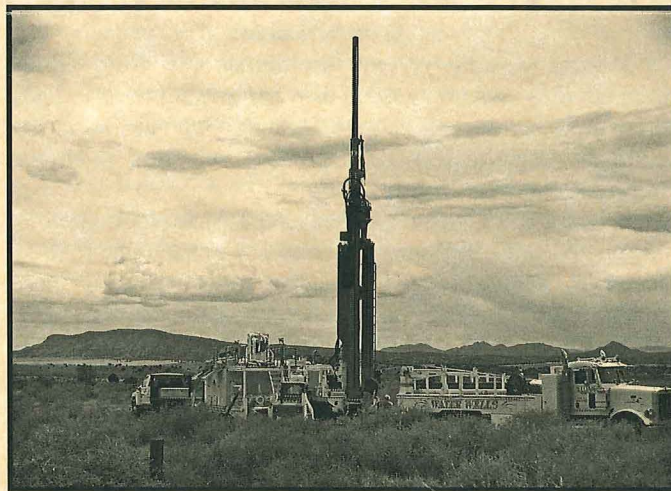
## VISION: THE FUTURE OF GALISTEO

### Galisteo Community Planning Committee

In the future, the village of Galisteo will be a place that continues to preserve its distinct character as a historically significant settlement in the Galisteo Basin, while promoting a strong land and energy conservation ethic. The village will continue to be a place where history and shared values are honored and future generations can afford to stay and raise their families. The village will strive for autonomy by implementing effective land and natural resource conservation measures.

These values will be actualized by:

- \*Developing an efficient water utility with safe drinking water for everyone
- \*Implementing effective water conservation measures and reuse.
- \*Developing strategies to determine the appropriate residential density for subdividing land especially with regard to water availability.
- \*Concentrating future residential growth in and directly adjacent to the village center.
- \*Ensuring an affordable housing component to future growth.
- \*Providing access to open space through a trail network.
- \*Controlling traffic flow through the village.
- \*Defining public spaces where people can gather and socialize.



**HIGH RISE:** New village well just drilled on community-owned land west of NM 41. (Photo: Richard Shuff)

commercial/civic/institutional (schools and other amenities) and 11,700 acres of public open space. (The New Moon Overlook, set back from Lamy Hill, and West Basin Preserve off CR42 are large-lot conservation subdivisions that are funding the VBGP.)

Although there is plenty of scepticism, the general feeling seems to be that this conservation development would be an improvement on the business-as-usual model, since the County/State seems incapable of turning down development of any kind. But we are extremely wary of the water situation. No-one seems to be able to say specifically how it will affect our own water resources... not to mention those of the rest of the watershed. Karen Torres, the new County Hydrologist who was previously with the State Engineer's Office, met with the Committee on April 24th. Later a small group met with Charles Hagerman, a well-known hydrologist raised in the area (his family ranches at White Lakes). John Schomaker, who has done the most official work in the Basin and Eldorado, is working with Commonweal. To varying degrees, none of them is optimistic about the sustainability of water in the Galisteo Basin.

The only good news is that Commonweal's test well is in the northwest corner of their property which means that given the geology, it is far less likely to affect the village of Galisteo directly. Our water comes primarily from the alluvial source of the Rio Galisteo itself, which dries up when there is no rain or snowmelt. We are working with the Water Board on ways to monitor usage and impact on our wells so we can keep track.

The County Development Review Committee (CDRC) hearing on the Commonweal project has been put off twice now and the geo-hydro report is not complete. July 20<sup>th</sup> is the latest date. The Planning Committee will speak as well as submit a written statement of our concerns, which also include heights of buildings (visibility), light in the night sky, and traffic.

Water and future growth are inextricably intertwined. Rumors continue to swirl around the fate of the Saddleback Ranch. (Their water source is also the creek, and *upstream*.) We are constantly reminded of the need for hard long-term thinking, which is why (with the beneficent guidance of our County liaisons Beth Mills and Andrew Jandacek) we are trying to see into the future.

## UPDATE ON GAFFORD AND CLAYTON LAWSUITS

Richard Griscom

During May lawyers for the defendants (forty village residents who own property on the creek or on La Otra Vanda, east of the old bridge) submitted Motions for Summary Judgment, asking the judges to dismiss the quiet title suits filed by Morgan Gafford and Peirce Clayton.

Gafford and Clayton then presented Answer Briefs to the judges, giving their arguments for why the cases should not be dismissed. Defendants' lawyers are now preparing their replies to the Gafford/Clayton answers; reply briefs were due June 12<sup>th</sup>.

The cases will then be squarely before the two judges. They will have the option of either dismissing the cases without hearings, or holding hearings on whether or not to dismiss.

Hearings or not, we the defendants are confident that the cases will be dismissed. We feel that the law is clearly on our side, and that there is no reason for the judges to deny Summary Judgment.

## PEDACITOS/BITS AND PIECES

**Tana Cárdenas** graduated from Santa Fe High at the end of May. She will attend the University of New Mexico in the fall and is interested in mechanical engineering.

**Isabella Gonzales'** clay and metal wall sculpture, *Cross Currents*, commissioned by the University of Texas at El Paso, will open there on Thursday, June 29<sup>th</sup>.

The title of former State Historian Robert Torrez's *UFOs over Galisteo and Other Stories of New Mexico's History* (UNM Press) is something of a misnomer since the "UFO" in question was apparently a dirigible (an "Asian balloon") and the town was Lamy (when it was still called Galisteo Junction). But it's a good read and touches on **Galisteo history** in several places.

**Deborah Madison's** latest book, *Vegetable Soups from Deborah Madison's Kitchen* (Broadway, \$19.95) was reviewed with mucho gusto in the *New York Times Book Review*, May 28<sup>th</sup>: "Madison's pragmatism lures you into the kitchen. Fluidly blending Asian and European ingredients, like soy sauce in a roasted vegetable broth, she has a knack for small but original ideas and a palate that hews to classics."

**Mike Anaya's** "Code of the West" – intended as a guide to newcomers—was written up in *Bienvenidos 2006*. Although his fellow County Commissioners declined to adopt it, Anaya contends that's because "they don't live in the rural part of Santa Fe County. They don't get it." Among his warnings to those new to rural life: "Dogs that run loose in the country can be shot if they chase livestock," and "Digging a well isn't a guarantee that you'll hit water."

In March, **Santa Fe County's Open Space and Trails Program**, which has protected over 3800 acres, many of them in the Galisteo Basin, was honored with conservation awards from the Trust for Public Land and the National Association of Counties.

Earth Works Institute is identifying and mapping **wetlands in the Galisteo watershed** and may be able to fund easements for their protection. Recent research has revealed that the creek is sitting on a bed of shale, which means it has a very limited sponge function and dries out more quickly than previously thought. In a drought like this, Cottonwoods and Willows have a hard time, while the insidious Russian Olives and Tamarisks do just fine.

**Ron Helman's** new CD is *Reflections of Beauty*. The release party was held at the Galisteo Inn on May 31<sup>st</sup>.

Priscilla Pino, daughter of Alexandro and Clara Hurtado Pino and granddaughter of **Bluebellé (Brauglia) Jackson Hurtado**, died in Denver on May 8 at age 50. She was buried in the Galisteo cemetery on May 15<sup>th</sup> near her mother and grandmother.

**Patrick McFarlin's** March exhibition—"From Downpatrick to Blacksod" -- was covered in an article in *Pasatiempo* March 10<sup>th</sup>. His landscapes, painted on a fellowship at the Ballinglen Arts Foundation in Ireland last year, "get under our skin through their extraordinary beauty," wrote Elizabeth Cook-Romero. His "fractured and reconstructed paintings come uncomfortably close to depicting the world as it really is – a place where everything is subject to change."

**Janice Felty Griscom** performs in Bizet's *Doctor Miracle* with the Santa Fe Opera Lunchtime Opera (45 min. long) at El Museo Cultural, June 13, 15, 20, 21 at 12:15 and June 10, 17, 24 at 1PM: \$5 tickets available at door, as are \$5 box lunches (or bring your own). Janice will also perform at the Cocktail Hour Cabaret at El Museo on June 9, 14, 16, 21, 24 at 5:30. Full cash bar available, \$5 tickets at door.

**Richard Griscom** will sing with Santa Fe Men's Camerata, July 1 (7:30PM) Unitarian Church on Barcelona St.; July 2 (3PM) at Holy Faith Episcopal Church on Palace Ave.

## FIVE MINUTES WITH BILL

Tara Brickley

In January I met briefly with Governor Richardson to ask that the preservation of Galisteo be considered before all else. This request was made in light of possible "improvements" to Highway 41 and its bridges. The increased use of 41, especially by gasoline tankers and other excessively heavy trucks was also mentioned.

The governor began by saying he had recently promised the owners of the San Cristobal Ranch that U.S. 285 would not be further widened. The suggestion of reinstatement of the New Mexico Central Railroad Line (which ran from Santa Fe to Moriarty, to the west of the traditional village) was well received. "I like trains," said Richardson. He asked that I learn whose land the right of way for the line crossed. A Galisteo highway bypass around the village was also proposed.

By April I received a call from the governor's Advisor for Energy and the Environment to report on the suggestions made. The bypass idea would, he felt, engender too much controversy. The Railroad idea was not nixed but he stated that it could take years to come to be. He also said the right of way for the line has become antique—i.e. the land it ran on is once again owned by the landowners. It was noted that the proposed train from Albuquerque to Santa Fe was the idea of then-Governor Toney Anaya in 1974. It has taken over thirty years to come into being.

The conversation with the governor closed with the reassurance that he and his administration think of Galisteo as "a gem."

## GCA REPORT: May 15th MEETING

Linda Braun, Secretary

Many thanks to the Galisteo Studio Tour artists for donating \$150 to the Galisteo Community Association.

The Board continued to discuss the issue of graffiti in the village. One idea was the use of products that coat surfaces and allow easy removal of graffiti. The alternative of engaging youth to paint murals on selected surfaces with the assistance of local artists was also discussed. The Board will continue to research possible responses at the June meeting.

Copies of the existing GCA By-laws were distributed to Board members to review.

Land plat information for the Church playground, the Community Center and the ten-acre plot west of NM 41 has been found and placed in the archive.

The CDRC meeting on Commonweal Conservancy's Galisteo Basin Preserve project has been rescheduled for around 4:30 at the County Courthouse on Grant St., July 20<sup>th</sup>. This will be an important meeting for Galisteo residents to attend.

In April the GCA made a request to the NM Department of Transportation for solar-powered driver-feedback signs to be placed on NM41 at both ends of the village in an attempt to limit speeding. John McElroy of the NMDOT wrote to say that they would conduct a site visit and although the procurement process for the signs would take some time, portable radar devices would be used in the meantime to assist with speed control.

Due to a Community Center scheduling conflict, the GCA's pancake breakfast will be rescheduled for some time in July.

**The Board voted to change its meeting day to the third Thursday of the month. The next meeting will be June 15<sup>th</sup>, 7PM.**

Ted Fleming and Scott Diffrient have placed a ten-foot "story pole" on top of the current **village water tank** next to the cemetery to show **how high the new tank will be**. Anyone concerned with the height should contact them.

You've probably noticed the **Road Committee's** success in acquiring the no-passing yellow stripe through the whole village to the hogback. Thanks for your hard work!!

On August 4<sup>th</sup> the **Galisteo Watershed Partnership** meeting will focus on the Galisteo Community Plan.

## AUDUBON INTERNATIONAL MIGRATION BIRD COUNT, GALISTEO, MAY 2006

Jan Saunders

Galisteo is part of the Santa Fe County Migratory Bird Count done each spring by Audubon. For the whole county, the numbers this year were very low in both species and quantity. Drought? Climate destabilization? Loss of Habitat? Probably all three of these factors are culprits in the global decline of the bird population. The information gathered in these counts enables ornithologists to track the changes in numbers and migratory patterns of birds. This data is vital to understanding the challenges faced by the birds and the efforts they make to survive the difficulties they encounter as they follow their seasonal migration patterns in our Western Hemisphere. Here are some interesting sightings from the Galisteo Count, 50 species in all.

*One* sighting: Black Phoebe, Say's Phoebe, Western Scrub Jay, Mountain Chickadee, Western Bluebird, N. Water Thrush, Yellow Breasted Chat, Dark-Eyed Junco, Lazuli Bunting, Bullock's Oriole, and Pine Siskin.

*Two* sightings: Cooper's Hawk, Great Horned Owl, Northern Flicker, Western Wood-Pewee, Bushtit, White-breasted Nuthatch, Rock Wren, Bewick's Wren, Mountain Bluebird, Curve-billed Thrasher, Chipping Sparrow, Lark Sparrow, Lincoln's Sparrow.

*Three* sightings: Ducks (Flying UFOs), Downy Woodpecker, Ash-throated Flycatcher, American Crow, Yellow Warbler, Canyon Towhee, Red-Winged Blackbird, House Sparrow (3+).

*Four* Sightings: Juniper Titmouse, Orange-crowned Warbler, Black-headed Grosbeak.

*Five* sightings: White-winged Dove, Common Raven; *Six*: Brown-headed Cowbird. *Seven* Blue Grosbeak; *Eight*: Barn Swallow, Spotted Towhee (8+); *Ten*: Eurasian (*cont.p.4*)

Collared Dove, Warbling Vireo. *Fourteen:* N. Mockingbird; *Fifteen:* Turkey Vulture, Bank Swallow; *Eighteen+:* House Finch; *Twenty+:* Black-Chinned Hummer; *Twenty-one+ :* Starling.

It is strange that we did not see the American Kestrel or the American Goldfinch since I know they are here and see them nearly every day. It is special that we saw the Northern Water Thrush and very special to see two Great Horned Owls, the nesting Cooper's Hawks, the Lazuli Bunting and the Yellow-breasted Chat. It was AMAZING that a few days before the Count a good eye reported a White-faced Ibis, and a few days after, someone saw a Scissor-tailed Flycatcher.

Our Bosque is truly a Birding Hot Spot. It is a life-saving stopover for migrating birds. Treat it well. Enjoy it and preserve its wildness.

For an amazing account of the fragile web of bird migration routes around the globe, I recommend *Living on the Wind* by Scott Weidensaul. It promises a better summer read than a lusty love novel or a grisly detective thriller.

More than ever, birds are depending on the Back Yard Bird Feeder for their main source of food and water. Have a delightful summer and don't forget to feed and water the birds! (Jan@kevansaunders.com)

## EL PUENTE SPONSORS: GREG, KYLIE, & FRANCES O'BYRNE

### GALISTEO CLASSIFIED

ADS ARE FREE, AND FOR GALISTEO RESIDENTS ONLY. Contact: 14 Avenida Vieja or call 466-1276 by Sept. 5th for next issue. PLEASE CALL TO CONTINUE ADS.

#### FREE

**Horse manure** from Linda Vista Stables. Call Maria, 466-8930.

#### FOR RENT

**Historic home in heart of old village**, 2 BR, 1B, \$1500 mo. 466-2111.

#### WANTED

**Space to rent for storage and light workshop**, approx. 100-1200sq ft. Call Jim West, 818-209-8587.

#### SERVICES

**Saturday Art Classes for children and adults**, Retablos and watercolors. 10-12AM or 2-4PM, weekdays or weekends, from May 20<sup>th</sup>. \$150 for 6 weeks. Catherine Ferguson. 466-2765.

**One Room at a Time, Organize, Clear Clutter. Redecorate, Archive Memorabilia.** Call Pamela Markoya, 466-9191.

**Barbara Holloway Fine Handweaving** scarves, shawls, vests, jackets, handwoven of luxurious chenille. 466- 2118.

**Like things done right? Welding, flagstone, moss rock, fountains, plumbing, sprinkler, and drip systems plus Gopher Control.** David Maestas, cell 670-8608 or 660-9715.

**Photo & Design.** www.richardshuff.com; 466-7723.

Call Beth for **housesitting/petcare/vet runs/odd jobs/studio assistance/party help/you name it...** in Galisteo, 470-7606.

**Galisteo Caretaking Services.** Richard, 466-7723.

**Baby-sitting, petsitting and animal care**, Mercedes, 466-7285.  
**Need a permit? Computer Aided Drafting Support:** for architects, engineers, contractors and homeowners. 4 yrs. experience/local references. Call Adan Cárdenas, 466-8967.

**Dave's Auto Repair:** tune-ups, oil change, restoring, minor repairs, restoring, painting. Local refs. Free estimates: David Montoya, 466-2097.

**SB Lejo/Sina Brush** is taking special orders for antique Mexican furniture. Call 577-4045.

**Galisteo Woodworks:** for your custom woodworking needs. Furniture and furniture repair. Antonio Chavez, 466-3601.

**Carpentry:** Custom closets, hand-carved tables, benches, gates, doors, 35 yrs. experience, local refs. Onesimo, 466-1430.

**Electrical Concepts:** Residential/Commercial/Industrial. Hansi Mohn and Michael Anaya, 988-8853.

**Native Bloom,** Landscape design/maintenance. Linda, 466-4658.

**Restore your old photo:** We copy, repair, and reprint your favorite damaged or fading photos. Richard/Cara, 466-7723.

**Linda Vista Stables:** Beginner western riding for children and adults; 1-2 hr. trail rides; short-term boarding. 466-8930.

**Common sense, gentle dog-training:** house manners, management problem-solving at your home; also limited boarding. Twenty years experience. Call Evelyn, 466-1875.

**Acupuncture, herbal medicine, feng shui, nutritional counseling, massage.** Dr. Connie Fisher, 470-9314.

**Passive Solar Builders:** Locally owned general contractor since 1980. Quality home construction, renovations: 466-2118.

**Private Exercise Training and Power Circuit Classes** with Ron Helman. Call 466-1919.

**Nick's Landscaping, Brush Removal, and Garbage Collection.** Call 466-0530 or 470-5973.

### +++ EL PUENTE DE GALISTEO+++

**Editor:** Lucy R. Lippard. **Contributing Editors:** Linda Braun, Isabella Gonzales, Richard Griscom, Jan Saunders. **Distribution, Production, Photographer:** Richard Shuff. **EL PUENTE logo** by Cara Lee. **Printer:** Allegra. **Send letters, comments, suggestions, contributions to EL PUENTE, 14 Avenida Vieja, 466-1276. NEXT DEADLINE: SEPT. 5. TO BE A SPONSOR: make out check for \$75 to GCA, noting "for newsletter," and send to address above.**

El Puente de Galisteo  
14 Avenida Vieja  
Galisteo NM 87540