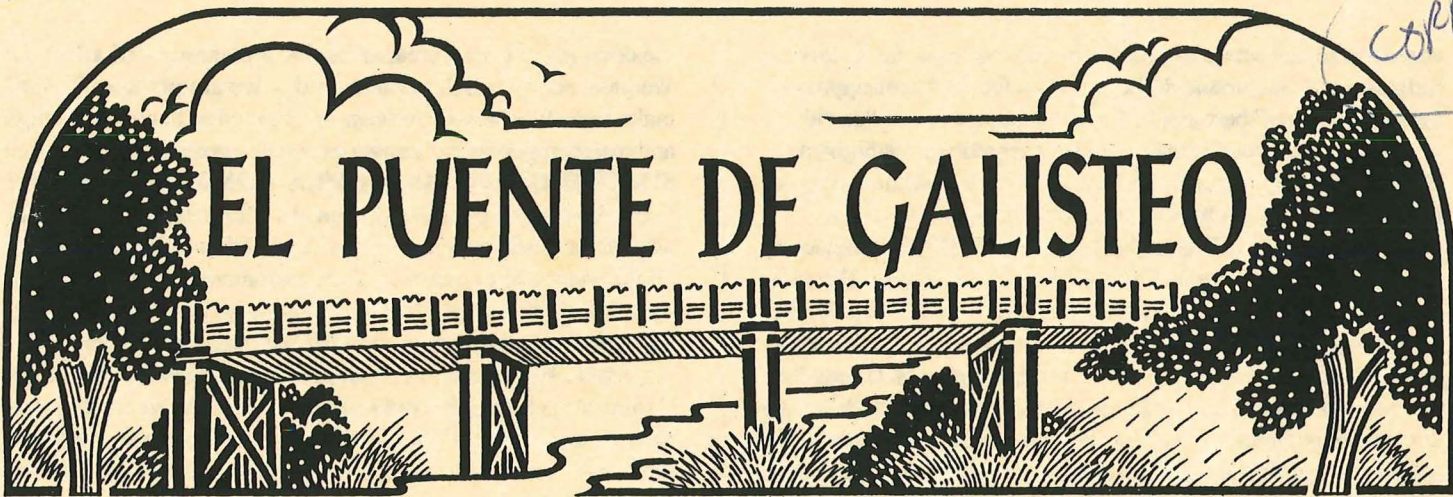


cooper



ISSUE #43

MARCH 2001

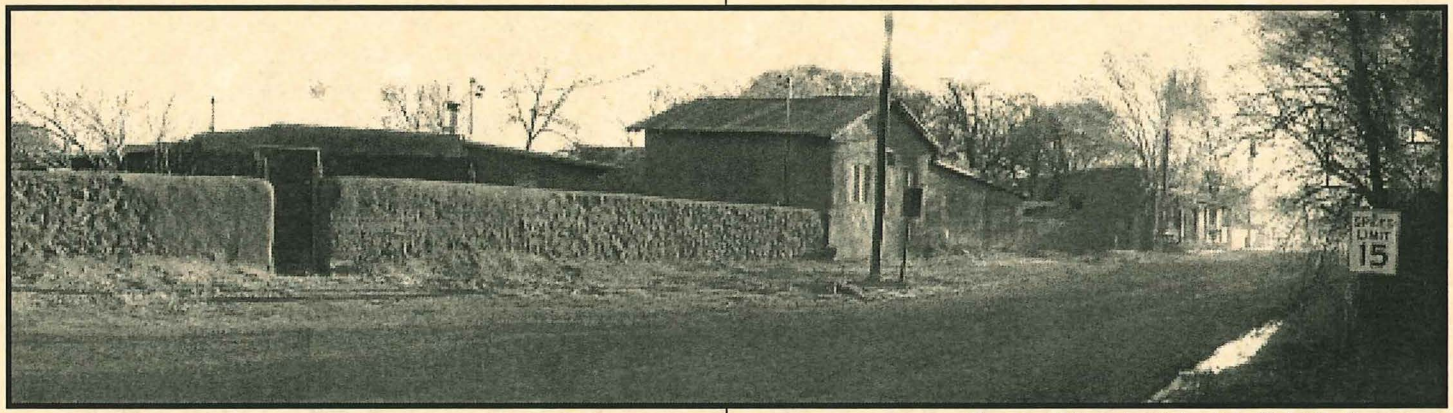
BREAK-IN ALERT

Bébé Givaudan's house in Ranchitos was broken into Monday March 5, between noon and 3PM. Nothing was taken but token trinkets, despite the fact that money, checks, and other valuables were in clear view. The Sheriff came and tracked the intruders' path to Bébé's house. They parked across from Patricia Heller's, checked out Sam Sloan's and Dorothy Victor's, then walked down the hill. A housesitter elsewhere in the village also felt she was being watched. A white sedan with a group of teenagers was seen in the area. If anyone has seen "suspicious" cars around, notify the sheriff. He will patrol the village for two weeks.

and head of its Development Committee, asked for volunteers and money. Barbara Holloway solicited comments on artists' shows at the Community Center (see last issue); a bar to hang works on will be installed if there is sufficient interest.

Joette Trofimuk and Janice Felty both bewailed the vehicles speeding through the village and are working on solutions. Your editor reiterated her plea for more literary contributors (and sponsors) for the newsletter. Florence Sohn put in a word for the History Archive. She and Suzi Calhoun plan to compile an informal village census.

The nominations for GCA Board officers were uncontested and all were willing to serve again. The following were then re-



Quartermill Farm by Richard Shuff, detail of panorama.

LIVELY ANNUAL GCA MEETING

The annual meeting of the Galisteo Community Association was held at the Community Center on March 1. The turnout was good, although we missed many of the older community members. The major speaker was our new County Commissioner Jack Sullivan, who gave forthright and thorough answers to the audience's questions about the traditional community plan, water, development, and the 285 Corridor. (See below.)

Before the major event, Melanie Monsour spoke about the Saturday morning coffee shop and book/video trade, and a new resident said how much she appreciated the coffee shop. Diane Wilson spoke on the new Vista Grande Library at Eldorado, which will be open soon. Victoria Pruet, a new library board member

elected by acclaim: **Barbara Holloway, vice president; Barbara Cooper, secretary, Mela Montoya and Richard Shuff, Board Members.**

Rod Hall thanked everyone on the Board for serving us well. It was suggested that another community meeting be held when there was something to report back about the Community Plan. President Joette Trofimuk reminded us to get active: "If you don't want to do it, you forfeit your right to complain."

285 CORRIDOR

There was general consternation at the meeting about a possible commercial "node" (now euphemistically called an "employment corner") at the junction of routes 285 and 41. Planners see the "corner" as a zoning tool to combat strips and

concentrate commercial structures in one area, or "matrix." Sullivan said that around 400,000 square feet had been approved for such "corners" between I-25 and 41, the seven-mile "corridor" in question (it extends 1000 feet on either side of the highway). The 20-plus Eldorado subdivisions (some stalled by the moratorium) now include about 300 residences.

The GOOD NEWS is that when EL PUENTE contacted Rosemarie Baggione and County Land Use Planning Director Jack Kolkmeier, both made clear that after intensive study, the Committee has *rejected the notion of any commercial site at the junction of 285 and 41, and also at the Lamy turnoff.* (Lamy has its own non-residential plans within the village itself, to be developed by the railroad.) The commercial sites selected by the Committee, with an emphasis on services needed by area residents, are all up Lamy Hill to the North, the last one in our direction being a single lot at Spur Ranch Road. Kolkmeier said the 41/285 junction "is not designated as a commercial area, which will be kept contained to the north, as a spine for the subdivisions in the area."

Joe Miller's gravel pit on the east side of 285 at 41 is grandfathered in as industrial, but not commercial, zoning. In addition, there is an application in to the County Open Spaces program to acquire Miller's property (an archaeological site) between the Lamy road and the Galisteo Creek, which would connect with the 50-acre park closer to Lamy village.

Two local groups have been meeting about the 285 Corridor along the new four-lane highway from I-25 to NM 41.

The U.S. Highway South 285 Corridor Committee — a planning group supported by Santa Fe County and County Land Use Planning Director Jack Kolkmeier — has been meeting for around two years. Anyone can attend the meetings, but only Committee members can vote. Galisteo is invited to send a representative and pay the \$25 membership fee to receive the mailings and become a voting member. (Individuals can pay \$15 to be non-voting members.) **The Committee's next meeting is Thursday March 22, 5-7 at the Railroad Building in Eldorado.** Galisteños are encouraged to attend.

The second group is the ten-year-old U.S. Highway 285 Coalition — made up of representatives of all the subdivisions along 285. ("We're not [just] Eldorado," is one of their bywords.) They are not concerned solely with corridor planning. Their mandate is to oversee all development in the area. The Coalition fought the array of giant streetlights planned at the Eldorado exit from I-25, and succeeded in cutting the number, though not as much as they had hoped.

According to Rosemarie Baggione, who is active in both groups, the Coalition is now battling expansion of the Eldorado Transfer Station into container and vehicle storage and a big highway gravel pile. Adjacent property values have already suffered. A larger site is a visual blot on the landscape and does not meet environmental standards. She welcomes new members of the Coalition from the Galisteo area since most of us use that dump. This will be the main topic at their **next meeting: March 21 at the Eldorado Community Center conference room, 7:00 PM.** For further information contact Baggione at 466-0755.

Galisteo has never been involved in these groups because we were thought of as a separate, and isolated village. But those days are rapidly disappearing, and although Galisteo is not in

the corridor planning area, all regional planning will affect us. We have such a small population that we are going to have to make ourselves heard. Sullivan encouraged us to go to meetings and make our concerns known as soon as possible.

SHOULD GALISTEO ADOPT A COMMUNITY PLAN?

This is the crucial question. In 1998, Santa Fe County adopted an ordinance creating a new Article XIII of the Land Use Development Code, outlining a community planning process. (See EL PUENTE cover story January 1998 and Richard Griscom's concise summary in the Summer 1998 issue.)

There had already been an attempt in the 1980s to create a Community Land Use plan for Galisteo. The goals were: to determine our own boundaries; to define community land, and figure out how to protect it from encroachment; to protect the Bosque/Creek area, denying motorized access and grazing animals, and establishing a hiking trail there; to establish acceptable horse trails and get rights of way; and to determine village speed limits.

The 1980s' plan foundered on more controversial areas, such as: no outside lights higher than ten feet and no light spill from one property to another; restriction of building height in village, no two-story buildings in traditional area; all mobile homes off wheels with skirting. One participant recalls "It was complicated and we had no help from the County. My feeling was that they did not actually want communities to gain any measure of self-determination... Anyway, we worked on it and finally stumbled over the lack of community support."

Happily, this is no longer the case. County planners now encourage communities to take charge. In 1998, Galisteo was listed as one of the County's 27 traditional villages, defined as a town older than 75 years, with clustered settlement. In 2000, both the new County Commissioner, Jack Sullivan, a Democrat, and his opponent in the election, Green candidate Xubi Wilson, agreed that the best way for Galisteo to have some say in our own future was to pursue the Traditional Historic Village status. (See EL PUENTE Oct. and Nov, 2000.) After a lot of hard work, Tesuque's plan was recently accepted. Cuartelez, Aqua Fria, and La Cienega are still in process.

The first step in the application process is to create a steering committee in conjunction with County staff. Members must be residents and property owners in the community and "be representative of its diversity." All planning sessions and activities must be open to the public and advertised throughout the community. "Open discussion and diversity of opinion shall be encouraged. The Community Plan shall document resident/owner participation and representation."

A Galisteo planning committee sets the boundaries of the village; the County approves them and helps us draw up the plan. There is a waiting list, so we need move fast.

The greatest virtue of this kind of plan is that it's community based. We would have our own Development Review Committee, and make recommendations directly to the Board of County Commissioners, rather than having to go through the CDRC (County Development Review Committee).

Such a plan does not curtail building as such, it would just give us a chance to think ahead and decide where we would like to see building rather than someone coming in and buying up a chunk of land next to the village and doing whatever they liked.

Chris Fields asked about the possibility of a Green Belt. Sullivan said, "Yes, you can try to plan for it, but you can not take people's land to do it." Open spaces can be factored into the plan with the cooperation of landowners. Developers are also required to provide a certain amount of open space. Maria Padilla asked about the difference between community boundaries and historical district boundaries. Sullivan replied that the historic district lies *within* the larger planning district.

When asked if the County was protecting us against the developers, Sullivan said, "Developers are always active participants and the public is usually the last to know." But, he noted, "the developers are us; they are local landowners. We know this area will continue to grow and will impact the things you care about." Sullivan reminded us that "the motive for comprehensive planning should not just be defensive."

EL PUENTE hopes this will be the beginning of an ongoing dialogue on the community plan.

FROM THE GCA BOARD

For the past two years the GCA has conducted a fund drive in March. Thanks to your generosity, we have raised a substantial amount of money for community projects. In the past year, our monetary needs have been more than met and the Board feels that it is not necessary to have a fund drive this year.

That being said, we as a community rely on two resources — money and manpower (much of it womanpower!) — in the form of volunteers who will give their time and considered opinions to the increasingly important issues that we face. It has become imperative that we begin to work in earnest on a community development plan to insure that our voices are heard regarding issues relating to the village.

We urgently need volunteers who will attend meetings with the County planners, consider future directions for the village and work with the Board on issues that will affect us all.

Instead of contributing money this year, will you consider joining us in protecting the future of our village and its land? This ongoing project will be interesting and your efforts rewarding to us all. We will welcome the contribution of your time. Call any Board member to volunteer. **The next GCA Board Meeting is March 15. Open Forum begins at 7:00.**

FROM THE FIRE DEPARTMENT

Galisteo Volunteer Fire and Rescue had its annual dinner at Steaksmyth on March 6, attended by several members of the County fire department, in impressive uniform, including Chiefs Holden and Hensen, Captain McSweeney, and the Med 80 Crew. Members of the GVFR were given tokens of appreciation, with special honors to Mike Datoli and Linda Anaya. Our own chief, Steve Moya, has been elected Vice-President of the County Chiefs; very nice things were said about him and the GVFR by his colleagues. This is an honor, and we're proud of him.

OBITUARIES: CELSO ANAYA, MANUEL BENAVIDES

Manuel Anaya's brother Celso died in Santa Fe on Feb. 11. He was 89 years old and was born and raised in Galisteo. His parents were Ventura and Rita Anaya, who had four sons — Celso,

José, Luis and Manuel, and two daughters, Virginia and Maria. He is survived by his wife of 62 years, Rosales Candelaria Anaya, their sons Ignacio, Manuel, and Gilbert Anaya, and their daughters Trinidad Perea, Mary Fama, Dell Montoya, and Joann Sage, as well as grandchildren and great grandchildren.

"He worked as a plasterman, outside and inside. He was very good at it," recalls his brother Manuel. "He did the cement in our kitchen; it was very straight."

*

Manuel Benavides of Gonzales Ranch, NM, a musician who had been living in Galisteo, was killed in a car crash recently. Galisteans will remember him for playing guitar (with Pretita Baca and Mela and Onesimo Montoya) at the December, 1999, holiday potluck at the Community Center. (Their picture was on the cover of EL PUENTE #31). Benavides and Baca (who survived the accident) had won medals for dancing and singing in the Senior Olympics.

PEDAZITOS/ BITS AND PIECES

No bird or wildlife report came in this month, but New Mexico ranked sixth nationally in the highest participation in the 4th Annual Great Backyard Bird Count. Santa Fe was sixth among cities, submitting more than 170 checklists. 154 species were sighted, ranging from finches and crows to burrowing owls and orange-crowned warblers.

A charming picture of **Suzi Calhoun** and **Janey Katz** with assorted canine children adorned the Valentine's Day cover story of the Eldorado section about local couples "Staying in Love."

From the *New Mexican* 100 years ago: "**Antonio Anaya**, a sheepman from Galisteo, is in the city on a purchasing trip."

Tom Morin's and Isabella Gonzales' four-part house on Avenida Vieja, designed by architect Beverly Spears of Santa Fe, has won an "honor award for excellence of design" from the New Mexico Chapter of the American Institute of Architects.

Ron Helman and Pamela Markoya both participated in the printmaking Monothon at SITE Santa Fe. An exhibition of the monotypes made by some 200 amateur and professional artists is displayed at SITE from March 9-18.

COLTPAC, the County committee on open spaces, is considering the acquisition of a second chunk of the rapidly subdividing **Thornton Ranch**, on the south side of County Road 42, west of the railroad tracks. The Trust for Public Land is the applicant in this second round of buying mandated by the second open space bond issue voted in last November. 750 acres of Thornton land was acquired in the first round. This 640 acre addition would ensure easy access from the road and expand hiking possibilities. The public hearing will be April 11, time TBA. A good local turnout would encourage the Board of County Commissioners to look favorably on another Galisteo Basin acquisition. It is beautiful country with significant cultural resources and extraordinary views.

Speaking of views, Suchi Solomon's "Earth Waves" column in the February *Eldorado Sun* suggests visiting the major petroglyph sites in the Galisteo Basin and in La Cienega. Readers be warned that the landowners take a dim view of trespassers.

Hacienda Tranquilas — the long-pending subdivision north of town — seems to be up and running again. The new sign says:

"COMING SOON: Hacienda Tranquilas. 23 proposed 12.5 acre homesites. Community water. Incredible Views!"

NOTICE: PLEASE STOP DUMPING brush or anything else ON MCKEE ROAD. We appreciate your cooperation.

TOO MUCH? TOO LITTLE?

by Ron Helman

Pamela and I just returned from a vacation in Los Angeles and Maui, Hawaii. It always seems that while you're away you reflect on where you are in your life and the path you have chosen.

First of all, LA should change its name to "the city of plastic surgeons." I had forgotten how obsessively humans can strive for physical perfection. We stayed with a wonderful and generous friend who unfortunately is caught up in the whirlwind of it all. Up and running in the morning, she lines up all her vitamins like little soldiers ready for their mission. Then off to the treadmill for some exercise – but not just *any* exercise. While she was walking, a video was barking out facial exercises that contorted her face into silly putty. Then she was off and rushing to make her appointments for acupuncture, massage, nails and hair color. And you thought the iron man was tough. I'm trying my best to not be judgmental, but the stress of it all seemed to outweigh the caretaking. That "not good enough" feeling will always take you down.

On the other hand, while on a hike to a red sand beach in Maui, we came across a lovely couple somewhere in their sixties. As we passed them, the woman said, "my knees aren't what they used to be." They had clearly not created a health plan for their later years, as both were very weak and overweight. It was sad to see them struggle at this stage in life.

So where does this little story lead us? Only you can decide what is right for you. Probably somewhere between too much and too little.

EL PUENTE SPONSOR: LINDA DURHAM CONTEMPORARY ART

GALISTEO CLASSIFIED

ADS ARE FREE, AND FOR GALISTEO RESIDENTS ONLY. Put in Box 77 (South on Rte. 41 at Avenida Vieja) or call 466-1276 by **April 5** for next issue. Please advise for reprinting.

FOR FREE/FOR SALE/FOR RENT

FREE to kind, single, cat-loving lady, a cozy casita in village of Galisteo for month of May. Call Valentine, 466-0791.

Sony Vaio laptop computer, DVD and more; costs \$3100 new, selling for \$1500. Call Richard 466-7723.

Galisteo Home for lease; old adobe on river; 3br, 3b, incl. separate living quarters. \$2,500 mo. Nancy Fischer, 466-3082.

SERVICES

Galisteo Caretaking Services: For the Chores You Ignore! Short notice, small jobs, housesit, have truck. Richard, 466-7723.

Dave's Auto Repair: tune-ups, oil change, minor repairs, auto restoring, painting, local reference, free estimates. David Montoya, 466-2097.

Electrical Concepts: Residential/Commercial/Industrial. Hansi Mohn and Michael Anaya, 988-8853.

Native Bloom, Landscape design/maintenance. Linda, 466-4658.

Gypsy Doodle, call Beth for **housesitting and petcare** in Galisteo. 660-6012.

Stonemasonry: patios and walls, Paul Kozak, 466-3894.

Carpentry: Closets, hand-carved dining room tables, patio benches, custom gates, doors, etc. 35 years experience, local references. Onesimo Montoya, 466-1430.

Avon Representative in Galisteo. For free brochure and information, call Maria 466-8930.

Common sense, gentle dog-training: house manners, management problem-solving at your home; also limited boarding. Twenty years experience. Call Evelyn, 466-1875.

Home and Garden Services, Marghreta, 466-8319.

Astrotrends: an in-depth analysis of your natal chart, including a personalized reading for the coming year. Sliding scale fees. M.Cordero, certified astrologer since 1987. 466-8319.

Gold and silver jewelry with stones in Galisteo village, Silvio Mazzaresse. Call 490-2062 for directions.

Imagine your precious photos set to beautiful music, artistically presented on a CD. Participate in the process, pass on to your loved ones. To review a CD, call Johnny at 466-0392.

Acupuncture, herbal medicine, feng shui, nutritional counseling, massage. Connie Fisher, Doctor of Oriental Medicine, 470-9314.

Athan Merrick (15 yrs old): occasional **babysitting** weekends and some evenings; 466-9040.

Private exercise training in the village with Ron Helman. Thirty years' experience. All levels and conditions, 466-1919.

Car and Truck Detailing: Will clean and vacuum the inside of your vehicle and do the windows. Call Miguel Padilla, 466-8930.

Nizhoni High School (grades 9-12; enrollment at any time) and **College of Divinity:** for more information, please call 466-4336.

Passive Solar Builders: Locally owned general contractor since 1980. Quality home construction, renovations: Charlie, 466-2118.

One of a kind sterling silver jewelry, made by ancient lost wax process, and decorative art in wood and tin. Barbara and Joe Cooper, El Estudio, #18 the Hill. Call 466-3827 or 466-0133.

Barbara Holloway Fine Handweaving: scarves, shawls, vests, jackets, coats, handwoven of luxurious chenille. 466-2118.

+++ EL PUENTE DE GALISTEO+++

Editor: Lucy R. Lippard. **Contributing Editors:** Anna Cárdenas, Barbara Cooper, Joe Cooper. **Production:** Insty-Prints, Santa Fe. **Staff photographer:** Richard Shuff. **El Puente logo** by Cara Lee.

Please send letters, comments, suggestions, contributions to EL PUENTE, 14 Avenida Vieja, Galisteo NM 87540, or call 466-1276. (Make out checks to GCA, "for newsletter.")
NEXT DEADLINE: April 5.