

ISSUE #30

DECEMBER 1999

### EDITORIAL

An editorial in the *New Mexican* on Dec. 17, 1948 noted that "several groups are plugging for a return of the old custom of burning luminarias on Christmas eve. They are little piñon fires lighted in threes before the homes of the townspeople, intended to guide the Christ Child on His way. It hasn't been so long since the fires twinkled everywhere on the night before Christmas. The custom died with the end of the wood vendors who used to bring faggots to town on the backs of burros."

In Galisteo there were Las Posadas and Los Pastores (see EL PUENTE December 1997 for first-person reminiscences). This year, even the newer customs are fading. There will be no Christmas Lights Contest, and no carol singing behind the church on Christmas Eve. However, there are lots of parties.....

**Old Church in Galisteo, N.M., c, 1884. (Photo by J.R. Riddle, Courtesy Museum of New Mexico, neg. no. 76052.) Story on page 2.**

### GALISTEO HOLIDAYS

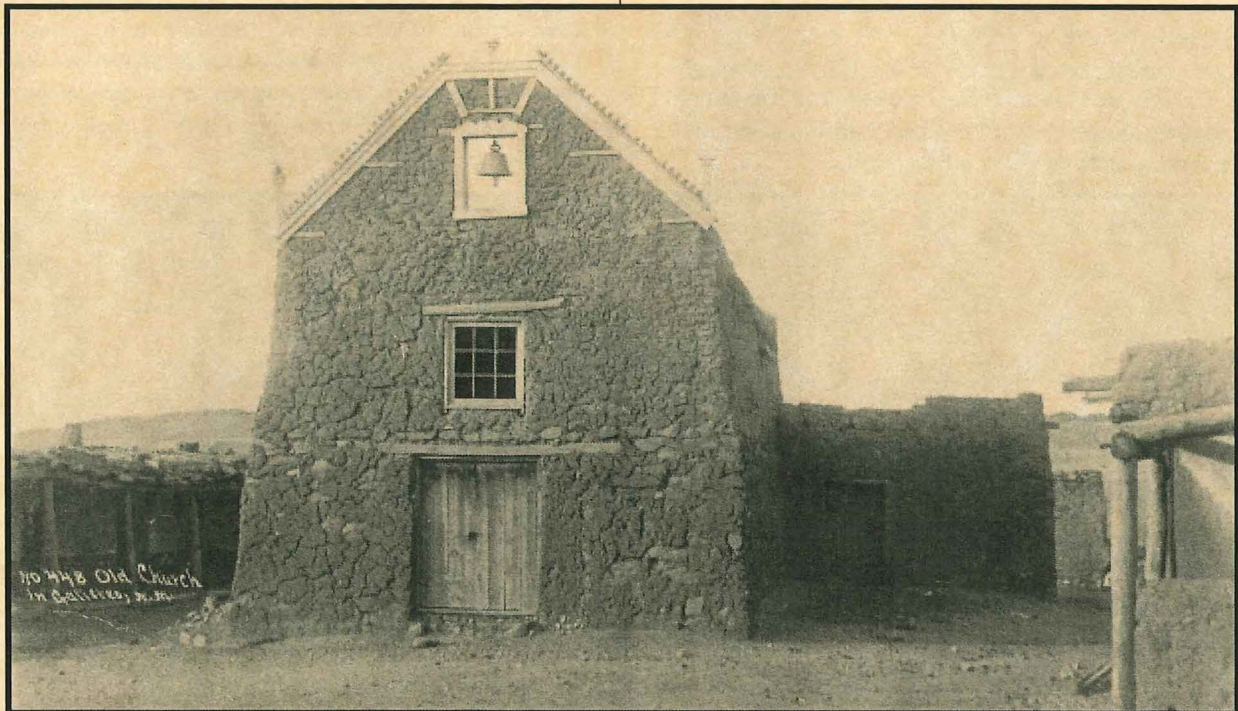
**DECEMBER 18: HOLIDAY OPEN HOUSE AT VISTA CLARA**, Saturday, 1:30-5:00 at the Tewa Lodge. Caroling, Games, Treats, Hot coffee and cocoa. Come have your picture taken with Santa, who will be there from 1:30 to 3:00.

\*

**DECEMBER 29: GALISTEO COMMUNITY ASSOCIATION HOSTS AN OPEN HOUSE** at the Community Center, 6:00 PM. Potluck dinner (bring your best). Enjoy Local Talent (bring your musical instruments).

\*

**DECEMBER 31: SPEND YOUR MILLENNIAL NEW YEAR'S EVE IN GALISTEO!** Live music, dancing, refreshments, party favors, at the Community Center, Senior Citizens (65 and up) free; \$5 donation. 8:00 PM through midnight. For more information, call Melanie/Margheta, 466-8319.



## THE OLD CHURCH ON THE HILL

The old church on the Hill was replaced in 1884 by the present Nuestra Señora de los Remedios. What remained of it was torn down in the WPA period (probably late 1930s). The old church is commemorated now by the mound of rubble east of the Coopers' house. The late Tony Anaya made sure we would remember it by placing a cross on its crest and adding a painting based on an 1880s photograph.

The drawing below comes from the journals of a Confederate soldier. The day he sketched the church, he wrote of their march down from the Real de Dolores (near Golden):

"We took up the line of march this morning at a reasonably early hour and traveled 4 miles down a long slope and out of the piney country. We then reached the valley and traveled a good distance over a first-rate road and camped twelve miles from the gold mines at Galisteo. This is a small town situated on a small creek of the same name. We are now on one of the main roads from [Fort] Craig to [Fort] Union and considerably fatigued with our march. We were not sorry to know that we had at last reached a point where we could rest a little. [Lucius M.] Scott, Commissary Sgt., captured a large flock of sheep on the way and pressed them into service, as we are just now rather short of meat." From Galisteo, the weary confederates were headed for the Battle of Glorieta, which they lost. New Mexico did not become a slave state.

The date when this church was built is shrouded in mystery. The Archdiocese records from the period when it was probably built were destroyed in a fire in Pecos. It is not, as is sometimes assumed, the same church as the original mission built in the early 1600s at the Galisteo Pueblo a mile and a half to the north. (See EL PUENTE January 1997). Scribbled on a relatively new piece of paper in the Archdiocese file on Galisteo is a date of 1824, but there is no source or way to check this date, which seems late. David Kammer in his 1999 report on the Galisteo Historical District, dates it "c. 1825."

**Below: The church at Galisteo, 25 March 1862 (Arizona Historical Society) from A.B. Peticolas, *Rebels on the Rio Grande*, University of New Mexico Press 1984.**



However, it seems possible that this second church was built when the village itself was founded in the early 19th century. It would have been one of the first necessities in the walled enclave on the hill overlooking the fields below. (See EL PUENTE April 1999). We continue to search for precise documentation.

In 1846 the church was described by American soldier Richard Smith Elliott as "about thirty feet long by twenty feet wide, neatly whitewashed inside." The walls, he said, were partly built of stone and "topped out with adobes." Its door was "opposite the pulpit, at one end, with a gallery over it." The church faced South and had a flat roof. As the photograph on page one shows, it was made more tall and imposing by the addition of a false front, modeled after the Loretto Chapel in Santa Fe (which in turn was modeled after the Sainte Chapelle in Paris).

The church probably contained the two hide paintings (on *gamuza*, or buckskin) which hang on either side of the altar in the present church. Although one of these bears the date of 1608 it was determined by E. Boyd, an expert in New Mexican colonial arts, that they were not painted until the late 1700s, and the date is that of an engraving from which it was copied.

The c. 1884 photograph bears little resemblance to the Peticolas' 1862 drawing. He omitted the window beneath the bell (unless it was added later). By the time the photo was taken, the church was already abandoned for the new church down the hill. The side buildings were either destroyed or drastically changed. The bit of portal visible at the right of the photograph was probably the now ruined Bennie Anaya house. It remains for historians and archeologists to determine the actual configuration of Galisteo village's first plaza and place of worship.

**LAST CALL FOR Y2K:** Just in case you've been blowing off Y2K, remember that it would be wise in the next two weeks to prepare for at least a week of inconveniences: water, heat, medications, full gas tank, and food; keep a *small* amount of cash on hand to tide you over (*not* a lot, as it's risky and banks will fold if people take out too much!) Keep careful financial records; check your home computer for calendrical glitches. HOT LINE IN GALISTEO; Valentine Riddell. Call 466-0791 or (if the phones are out) 29 Via La Puente.

## PEDAZITOS/ BITS AND PIECES

"Churches of the North," the current exhibition at the Patina Gallery in Santa Fe (131 West Palace Ave., until Jan.7) features miniature church models by Roberto Cardinale and paintings by our own **Tony Anaya**, who lived on the Hill before his death in 1997. He specialized in paintings of little churches all around the area. At the opening on December 3, music was provided by Galisteans **Tacho Sandoval** and **Melanie Monsour** on accordians and **Libby Sandoval** on tambourine. One of the pieces they played was Tacho's original song, *The Galisteo Polka*.

The State Highway Department has lifted the weight ban on the San Marcos Bridge on State Road 14 again, which means the **gravel trucks** are back in Cerrillos.

**Nacha Mendez** (aka **Marghreta Cordero** of Galisteo) will perform December 16 at 9PM at the Paramount in Santa Fe (331 Sandoval). Cover is \$5 (or \$10, which includes *Bodega de Amor*, the new CD by Cordero and (Galisteo) **Melanie Monsour**, also available at Candyman, Borders and Allegro Music. Or call 466-8319.

The roof of the **Sala de San José** (the Dance Hall next to the Church) was repaired with the help of Site Santa Fe and Cornerstones in a single workday. Cornerstones, an organization that organizes volunteer and community labor to restore old buildings all over the state, is also working on a much more complicated roof job at Our Lady of Light in Lamy. That project involves a complete restoration over a period of time.

**Lynn Hirsch** has called our attention to an article from the *American Horse Council Bulletin* on the Coalition for Recreational Trails, which is developing a database of projects funded by the Federal Recreational Trails Program (RTP). Beginning in 1998, it has distributed \$30 and \$40 million a year to the states, which will be upped to \$50 million annually in 2000-2003. Might be something for the Galisteo Trails Committee to ask the State about, especially if the Galisteo River Park ever happens.

\*\*\*\*\*

## GALISTEO WATERSHED ASSOCIATION

The Galisteo Watershed Association (GWA), under the auspices of the non-profit Earth Works Institute, has taken on the east side of the Galisteo Creek between the old bridge and the southern highway bridge — the former Sena and Ortiz y Davis strip of land between the creek and Avenida Vieja, now owned by Griscom/Felty, Dant, Morin, King, and Lippard.

Jan-Willem Jansens, project coordinator, has been visiting the area since last spring. During the summer he and interns monitored the staked-out high banks, measuring the rate of erosion and loss of cliffbanks (which was considerable, given the wet summer). This fall they collaborated with Lucy Lippard on the small stretch between her house and the creek, which is the section most endangered by erosion from above (the east) and potential big floods.

The steep and rapidly eroding gully toward the creek was graded more gently then terraced with straw bales and rebar. The original grass and turf was laid down again. Then some 25 schoolchildren from Chris Dubois' 4th and 5th grade classes at Eldorado Elementary School planted seedballs on each level and

laid stabilized adobes at the edge of each terrace. Some of this work was funded by a grant from the McCune Foundation and some by the owner.

The next phase, dependent on a possible grant, will take place in the spring or summer and will treat the next gully or gullies to the north.

Jansens is very interested in broad community participation in the GWA's work. He has walked the east Creek bank with Buck Dant and the Kings, and consulted with Harmony Hammond about erosion-preventive care on the west side of the creek. He welcomes questions from other Galisteo residents.

The GWA's project takes in the entire 730-square mile watershed. Work began last year above us on Jim Cummings' land in Ojo de la Vaca (also with the participation of Eldorado schoolchildren) and below us on Cathryn Richardson's land near Cerrillos. The goal is to reclaim the entire watershed through active construction like that described above and collaboration with more and more landowners. The GWA hopes to prevent further degradation of the riparian environment from the creek's source below Thompson Peak west of Glorieta Pass, where Apache Creek and Galisteo Creek merge near Cañoncito, all the way downriver to the dam near I-25 below La Bajada. The major source of water (and silt) pouring into the Galisteo is Rowe Mesa and the San Cristobal Arroyo.

Among other methods, GWA recommends water harvesting through roof catchments and simple bermed earthworks and ecologically sensitive ranching and grassbanks. The group is doing outreach and education throughout the watershed, and has held meetings at Eldorado, Apache Canyon, and the County Road 55A area off NM 14. They are consulting with the USGS, the US Fish and Wildlife Service, the NM Environment Department, and other agencies.

**Anyone interested in more information, especially those whose property abuts the creek, contact Jan-Willem Jansens, 811 St. Michaels Drive, Suite 106, Santa Fe, NM 87505; tel: 982-9806; e-mail: commongrnd@roadrunner.com. Website: <http://www.whitten.net/galisteo>.**

+++++

## GCA DOINGS

by Barbara Cooper

The Community Association would like to thank all those artists who donated artwork to the GCA raffle during the Studio Tour. This raffle not only raises funds for our projects, but serves as a showcase for local artists' work being sold at the tour. We are most grateful for these donations, which raised over \$700 this year.

Over the past two years, the Board has worked hard on several new projects at the Community Center and we are eager to have you see the new patio and bancos and the improvements to the Archive Room. The December 29th Open House will be the perfect opportunity to see how your dollars have been spent, as well as to celebrate the end of the millennium with other village residents. Mark your calendars and come join the fun.

Photos of historic Galisteo have been ordered from the Palace of Governors Photo Archive. Florence Sohn is framing them and tinting some; they will hopefully be in place for the Open House.

## FIRE DEPARTMENT NEWS

Elections were held for the Galisteo Vounteer Fire and Rescue Department at the December 7 business meeting. Results:

**Chief: Steve Moya; Assistant Chief: Jean Anaya Moya; Secretary: Valentine Riddell; Treasurer and head of Ways and Means Committee: Michael Datoli; Medical Officer: Charlie Holloway; Captain: Linda Anaya; First Lieutenant: Nick Contreras; Second Lieutenant: Brian Moya.**

Congratulations and thanks to all for taking on these responsibilities. Especially to Steve, Jean, and Valentine for committing to another term, and to Mike Datoli, who is moving to Santa Fe but remains dedicated to Galisteo and to the GVFRD, as he has been for many years now. For information on joining the Fire Department — a great way to get to know your community — call Secretary Valentine Riddell at 466-0791.



The Mystery Tree, Galisteo, 1998 (photo: Richard Shuff)

**EL PUENTE SPONSORS OF THE MONTH:  
ROMONA SCHOLDER AND  
ROMAN ATTENBERGER**

## GALISTEO CLASSIFIED

**ADS ARE FREE AND FOR GALISTEO RESIDENTS ONLY.** Put your ads in Box 77 (Rte 41 south) or call 466-1276 by Jan. 10 for next issue. Please call to have ads continue.

### SKILLS NEEDED

Who is into **alternative healing** in this community? Please call Valentine, 466-0791, who is putting together a mini directory of these services in Galisteo.

Is anybody in town who has a **sewing** machine willing to do minor **alterations** like hems, sleeves, zippers, etc? Call Lucy, 466-1276.

**Galisteo craftspersons and artists!** Vista Clara Ranch is opening its retail store and since this is home to so many creative people, we would like to showcase your work. Christy Thiel, 466-4772.

### FOR RENT

**Galisteo house with 2 bedrooms**, January 4 to 31; \$600; or \$200 for single week. Call Melanie, 466-8319.

**Vacation Rental**, Dec. 22-30; two bedrooms, call David, 466-3903.

### FOR SALE

**Pine log bed headboard and footboard**, queensize, donated to benefit Galisteo Community Association, \$350 OBO. Call Maria 466-8930.

**Computer:** 333MHZ - 64 MBRam; monitor w/speaker, photo quality printer, scanner, \$950 OBO. Richard, 466-7723.

### SERVICES

**Electrical Concepts:** Residential/Commercial/Industrial. Hansi Mohn and Michael Anaya. 988-8853.

**Dave's Auto Repair:** tune-ups, oil change, minor repairs, auto restoring, painting. Local references. Free estimates. David Montoya, 466-2097.

**Custom decorative paintings** for your home: furniture with a new old look; murals on walls; accents on arches and doorways. Call Munson 466-4760.

**Galisteo Caretaking Services** for your property or animals. For the Chores You Ignore! Short notice, small jobs OK. Will housesit, have truck. Call Richard, 466-7723.

**Native Bloom Landscape Design and Maintenance**, call Linda, 466-4658.

**Car and Truck detailing:** Will clean and vacuum the inside of your vehicle and do windows. Call Miguel Padilla, 466-8930.

**Carpentry:** Closets, hand-carved dining tables, patio benches, custom gates, doors, etc. 35 years experience, local references. Onesimo Montoya, 466-1430.

**Avon Representative** in Galisteo, free brochure. Call Maria, 466-8930.

**Passive solar builders:** Quality home construction, renovations, and additions. Call Charlie, 466-2118.

**One-of-a-kind sterling silver jewelry, decorative art**, the Coopers, El Estudio, #18 the Hill. Call 466-3827 or 466-0133.

**Barbara Holloway Fine Handweaving** of luxurious chenille. Please call 466-2118 before visiting.

**Nizhoni School for Global Consciousness** on the new campus in Galisteo. Call 466-4336 or 466-1975.

**Reiki Sessions and trainings** by master V. Riddell, 466-0791.

**Private Exercise Training in the village** with Ron Hellman. Thirty years experience. All levels and conditions. 466-1919.

## +++ EL PUENTE DE GALISTEO+++

**Editor:** Lucy R. Lippard; **Production:** Richard Shuff; Freda Martinez of Insty-Prints, Santa Fe; **Contributing Editors:** Anna Cardenas, Barbara Cooper, Joe Cooper; **El Puente logo** by Cara Lee. **Please send letters, comments, suggestions, contributions by Jan. 10 to HC 75, Box 77, Galisteo NM 87540**