

Issue #11

January 1998

EDITORIAL

With this issue, EL PUENTE enters its second year. We are immensely grateful to everyone who has made it possible, especially to those who have contributed stories and money — the two things that keep us going, along with the most important support of all — community good will and encouragement.

*

Thanks to Shaun Gilmore, Alan Langer, and former summer residents May Stevens and Rudolf Baranik for contributions. These smaller donations are every bit as welcome as a full issue sponsorship, and will allow us to run more pictures.

*

EL PUENTE received a request to inform the community about the local ramifications of the new County General Plan. This will take more than one issue to explore, but here's a start: We welcome corrections and additions.

COUNTY ENCOURAGES COMMUNITY LAND USE PLANS

The Santa Fe County Commission has announced that under the new General Plan, communities will have a chance to create their own land use plans and help fashion the land use ordinances that will affect us. The General Plan being forged now — the first since 1980 — is expected to guide development for the next 20 years, so this is a significant chance to control our own destiny. Several communities have already submitted plans to the county but they can't be implemented until the county community planning ordinance is in place. It is still being drafted and will be the subject of two public hearings in February or March.

According to the *Albuquerque Journal*, recommendations to the Commission can also be made individually by residents, property owners and business people, but in the case of a relatively close-knit community like Galisteo this would be a chance to see where we stand as a group, allowing us at the very least to brainstorm on our own growth-management.

"We're happy about the General Plan providing for this," Kenneth Pin of the County Land Use Department told EL PUENTE. "Even though it's more work for us, it gives small

communities more self-determination, brings people together and helps them focus." Pin said a village would appoint a planning committee that could communicate with the County planners. The County would contribute resources like staff and mapping, and could help run meetings, but community organizations and the community at large would do the basic work.

The community land use ordinance is being drafted now (early January) and a draft should be ready in a couple of weeks. Several communities in the County have already begun or have plans to have plans: Cerrillos, Madrid, La Cienega, Cañada de los Alamos, Arroyo Seco and Aqua Fria. Among the criteria: that the community have some organization (like the GCA) and that it has reached critical population level in terms of water and infrastructure. (He was sure we qualified there too.) If we don't come up with a plan everyone agrees on (and that would be a surprise!), broad discussion about growth will at least let us know where we stand, and help us be more sensitive to the needs of all parts of the community.

Pin said, by the way, that the ballpark figure on Galisteo's population (determined on the basis of the number of houses and permits to build) is around 156 housing units and 472.64 people. (Somebody isn't all there!) That sounds high to the people I've talked to. Maybe we should do our own census. In 1973 there were only 46 homes and 180 people. Galisteo's growth spurt came between 1973 and 1993, when 98 homes were added (I assume Ranchitos, begun in 1981, was a large part of this.)

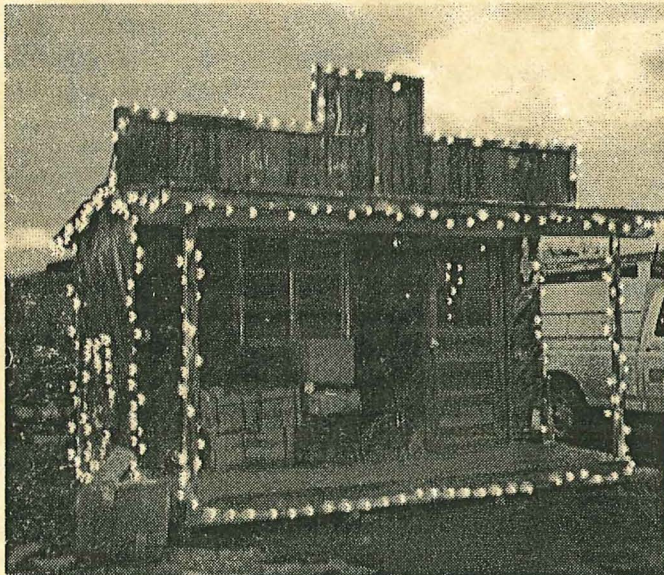
One of the things the County is discussing is the extension of community boundaries past the Traditional Village limits, and whether the 3/4-acre rule would still hold in the extended area, or whether a village would have two or more different zoning schemes. (As I understand it, Galisteo's boundaries already extend beyond the Traditional Village, running to the railroad tracks on the west, San Cristobal Ranch on the east, Clark Hill on the south and somewhere out by Nauman/Rothenberg's land on the North. (Socorro Contreras, who works with Rural Addresses, is checking on this for us.) Nobody seems to know exactly what the Traditional Village boundaries are. The southern border is a bit before Avenida Vieja meets Rte. 41 and part of San Cristobal was once communal grazing land. Anybody know the rest? More on this and on the community planning process in the February issue, after we receive a draft of the new ordinance.

WINNERS OF THE CHRISTMAS LIGHTS CONTEST

Most Spectacular: 1- Modesta Presley; 2- Anna and Freddie Cardenas; 3- Maria Padilla. *Most Creative:* 1- Linda Rice; 2- John Young; 3- Serapio Anaya. *Traditional New Mexican:* 1- Steve and Jean Moya; 2- Waylen Wong and Eric Misenheimer; 3- Jose and Yolanda Ortiz y Pino. *Honorable mentions:* Luis and Remie Chavez, Jim Ficke and Gary Grimm, Phyllis and Mark Lyons, and Lisa Griego.

Prizes were donated by the Legal Tender, Dressman Tile, Pink Adobe, Galisteo Inn, Wolf Canyon, Tomasita's, Newman's Nursery, Harry's Roadhouse, Pranzo, and there were also some movie passes. Only private homes, not businesses, were eligible.

Congratulations to the winners.



An Electrical Concept (photo: Michael Datoli)

BITS AND PIECES

The Galisteo Volunteer Fire and Rescue held elections on January 6, re-electing officers as follows: Chief — Steve Moya; Assistant Chief — Jean Moya; Medical Captain — Charlie Holloway; First Lieutenant — Linda Anaya; Second Lieutenant — Nick Contreras; Treasurer — Michael Datoli (who also heads the Ways and Means Committee). Susan Crocker resigned as Secretary and Valentine Riddell was elected to take her place. ISO came out and did their inspection. It went well, but we are awaiting official notification of the new rating.

Vista Clara's Christmas party was a cozy and delicious event. Owner Kaye Sandford is becoming a model for community-responsive local businesses.

Joe Cooper reports that the Lamy Megawell case is now all paid off, thanks to contributions from the community. A job well done (so to speak), but the water battles are not over.

Santa Fe City Councillor Cris Moore was interviewed last month by the *Eldorado Sun* and he had this to say about water in the area: at least into 1998, "water availability will be a non-issue thanks to El Niño. Both the county and the City of Santa Fe have become complacent.... The 1995 Water & Growth Seminar in Santa Fe sounded a clear warning to both the city and the county. Over two years later what has been done? Not much.

"The new county general plan draft doesn't adequately address the problem....The county has a water utility system that Commissioner Gonzales refers to as 'just a bunch of pipes in the ground.' It currently lacks significant water rights or access to the Rio Grande. It also lacks a significant customer base to distribute operating costs." For the foreseeable future, then, Eldorado's water situation (and Galisteo's) will remain more or less the same. All the more reason to think over our growth.

Elsewhere in the interview Moore said that it had proven out that "in the long run restrictive covenants don't work as a way to control land use....10, 20, 30 years from now you're going to want better tools to control land use than a bunch of covenants which in the end rely on one neighbor suing another. That's not a good way to enforce land use policy."

And he went on to say, about Eldorado (but it seems pertinent for Galisteo too), that the fundamental decision to be made was "whether you want to remain a bedroom community, whether you want to be a suburb of Santa Fe, or whether you want to be a community which actually has an economic base, with people both living and working there." Communities need to decide "what kinds of home-based businesses you're going to allow, or whether you're going to let them go on in an unofficial way, or whether you might actually want to encourage them as a form of economic development."

THE TAMALES TRADE

When San Francisco writer Rebecca Solnit, author of *Savage Dreams* and *A Book of Migrations*, rented in Galisteo for a few months last spring, she became addicted to Josephine Anaya's tamales. On a recent visit, she was taking the train from Lamy to Flagstaff and picked up a few tamales for the road. Solnit was taking the train so she could see those places in the Galisteo Basin and beyond that were inaccessible by car, and she was distressed when the porter told her she couldn't have a window seat after Albuquerque.

However, when he saw her consuming the Anaya tamales on the platform there, he asked "how they were, where they came from, and who made them, nodding approvingly to every detail," she writes, "and then started teasing me to give him one. In a bolt of inspiration, I offered the porter a tamale in return for a window seat, and he agreed happily. Somewhere around Gallup, where the sun set, he came to collect, and somewhere in Arizona, he came back to tell me it was great. There must be an arithmetical equation between the taste of one tamale and the best afternoon view from Galisteo to Gallup."

TRICKSTER

by S. Monroe

They are everywhere: in our Galisteo Basin and in the suburbs of Los Angeles. We seldom see them; they have their own secret world and we have ours. But, increasingly, they have figured out how to interface with us — how to utilize our waste, our pets, and even our livestock. Some of us love them, some (including the Government) hate them and have tried in vain to exterminate them, but that has only made them smarter and even more abundant.

When I'm out hiking in the Basin on a morning with the hoarfrost heavy on the saltbush and on the grasses, I see their prints running in the snow in a straight and perfect line. I see their scat piles full of seeds or matted hair. Last week I found a fresh badger skull lying in the trail, picked clean as if a meticulous naturalist had prepared it as a specimen. It takes courage and teamwork to kill a badger, one of the fiercest small animals around.

Once I saw them watching us. My wolf-dog saw them first. Her eyes are much sharper than mine. She stopped suddenly and stared into the juniper thicket across the railroad tracks. Then I saw them, four or five peering at us from behind the trees. They had a dog with them, some kind of a golden retriever mix. Perhaps they had kidnapped it, because now it was as wild as they were, looking at us with gimlet eyes. We stared at each other for a while and then the leader made a move and they disappeared among the trees.

Sometimes at night they wake me up when they come into town on a midnight spree — yipping joyously and singing their songs of comradeship and fresh meat as they careen through the bosque not far from my bedroom window. It is a sound truly full of wonder. I lie in my warm bed and am grateful to live in a place where wild things still run free.

I SEEM TO BE

by Carlos Montoya

I seem to be a bird
but I'm really a person.

I seem to be a flag blowing in the sky
but really am a skinny boy.

I seem to be dull
but I'm very sharp.

I seem to be a poet
but I really am a kid!

I seem to be a football player rough and rugged
but I really am a basketball player.

I seem to be me
but hey that's what I am.

Carlos Montoya was eleven years old when this was published in the 1996 edition of *Anthology of Poetry by Young Americans*. Now he is 13 years old and attends Capshaw Middle School. He is the son of David and Veronica Montoya.

KIDS! KIDS! CALLING ALL KIDS

What is your favorite place in Galisteo? Why? What would you like to know about Galisteo now or in the past? We can print your questions and see if someone comes up with the answers. Maybe we could start a list of the animals in Galisteo. Whatever. We'd really like to have more young people participating in EL PUENTE.

EL RINCONCITO: DICHOS Y CUENTOS

from Anna Cardenas

According to Ruben Cobos, in *Refráns, Southwestern Spanish Proverbs*, the Spanish name for proverb is *refrán*, also alluded to as a *dicho* (saying), often used as the source of a *refrán*: *Ama a tu projimo como a ti mismo (como dice el dicho)*, or "Love thy neighbor as thyself (as the saying goes)." Proverbs and sayings in English, and *refráns* and *dichos* in Spanish, then, are synonymous and interchangeable terms. However, the folk prefer the word saying to proverb in English, and *dicho* to *refrán* in Spanish.

En tus apuros y aganes, acude a los refránes.

In your needs and toils, resort to your proverbs.

A buen entendedor, pocas palabras bastan.

To a good listener, a few words are enough.

A cada santo se le llega su función.

Each saint has his feast day.

Achaque quiere la muerte para llevarse a los mortales.

Death wishes an excuse to take mortals.

Aqua que no has de beber, déjala correr.

Water that you will not drink, let it run. (Do not meddle in others' affairs; don't start trouble).

Allégate a los buenos y serás uno de ellos.

Approach the good and you will be one of them. (Something good is bound to rub off).

A lo dado no se le da fin.

What is given has no end.

Próspero año nuevo a la gente de Galisteo

CALENDAR

The next Galisteo Community Association Meeting will be held in early March, date still to be decided. It's an important one, as elections will be held and there will be three or four spots to fill on the Board. If you are interested, please contact Board members Linda McKee (Secretary) 466-0392, or Michael Datoli, 466-1771.

Mary Alice says meg in from POSA's.

A BELATED REPORT ON THE GALISTEO STUDIO TOUR

by Barbara Holloway

Business was up this past year even though the crowds thronging into town to see the art and sample the gastronomic delights were unofficially reported to be down in number. The tour took in more money in booth fees than last year — up 14%. We also reaped more money in tithes — a percentage of sales given by each participant from their tour earnings. This year we took in 20% more money in tithes than last year. All of these monies go toward covering the expenses of the next year as well as the current year.

And the good news is not over. Expenses for the 1997 tour were down from last year, a savings of about 3%. So, while we had less people come to the tour overall, we made more money. One possible reason for this downturn in clientele was suggested by Janey Katz, one of the tour organizers. She feels that the group did not do as good a job of publicizing through posters as they have in the past. Next year, she says, we need to really get those posters up *everywhere*.

This year we have promptly received the tithes from nearly everyone involved with the tour. We are assuming that those participants from whom we received no money didn't make any money. But, if this is not so, please remit your tithe — 5% of your gross tour income — to Barbara Holloway, treasurer of the Galisteo Art Association, at HC 75, Box 17, ASAP. Then our numbers will look even better!

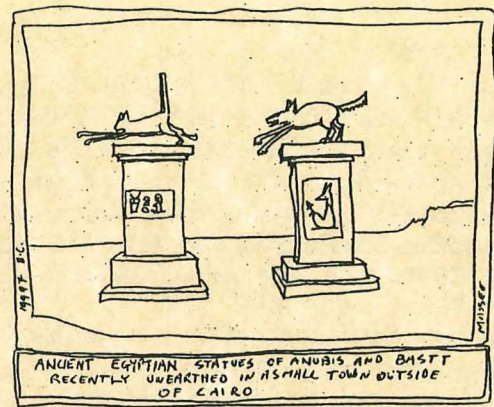
In conclusion, the participants of the Galisteo Studio Tour would like to give a HUGE thank you to the entire community of Galisteo for tolerating the busy tour weekend and for making Galisteo a place that people love to visit. Thank you one and all.

STARTING UP A REGIONAL LIBRARY

Eldorado's community center is starting a lending library. According to the *Eldorado Sun*, book donations are pouring in and everyone, whether an Eldorado resident or not, is encouraged to take advantage of it. For the time being it is an "honor library," which means anyone can borrow what they like and return it when they like, with no paperwork. It's open to the public during normal business hours, and "sometimes Saturdays." A group of county citizens are meeting the fourth Tuesday of each month at 7PM in the Eldorado Community Center living room to discuss plans for an organized regional library. Everyone is encouraged to attend and to give input. If you're interested but can't attend, call Kay Daniels, 466-1133 (e-mail kaydaniels@juno.com) or Sarah Sisk at 466-8621.

EL PUENTE SPONSOR THIS MONTH :
MUNSON HUNT(SCULPTOR)

Cartoon at the top of the next column by John Masee.



GALISTEO CLASSIFIED

ADS ARE FREE, FOR GALISTEO RESIDENTS ONLY. Put your ads in Box 77 (Rte.41 across the creek at Avenida Vieja) or call 466-1276 by Feb. 10 for next issue. Please call to have ads continue or not.

FOR SALE

Camera Equipment, Michael Datoli, 466-1771.

Sturdy Formica and steel table, 36" square, \$25 OBO. Call Lucy, 466-1276.

Two saddles in good condition, one a Johnny Beene from El Paso; 2 wooden gun cases; 1 twin bed frame; ornate antique organ, still plays. Call Linda McKee, 466-0392.

SERVICES

Dave's Auto Repair: Tune-ups, oil change, minor repairs, auto restoring, painting. Local references, free estimates. David Montoya, 466-2097.

Car and Truck Detailing: Will clean and vacuum the inside of your vehicle and do the windows. Call Miguel Padilla, 466-8930.

Carpentry: Closets, hand-carved dining room tables, patio benches, custom gates, doors, etc. 35 years experience, local references. Onesimo Montoya, 466-1430.

International Travel: Call Shaun Gilmore Merrick, independent travel agent with Global Travel International, 466-9040 (Fax 466-2268).

New! The "College of Divinity" at the Nizhoni School offers a few select classes to the public. Ask for more detailed information and the schedule. We are accepting enrollment for the second semester in Middle School/High School, which started Jan.12. Call 466-4336 or 466-1975.

Video Rental: Nizhoni School, 466-4336 or 466-1975.

Shaklee Products, Help protect your health and the environment. Shaklee now has Glucosamine for osteoarthritic pain. Call for membership information or direct orders. Kevan Saunders, 466-6620.

Avon Representative in Galisteo. For free brochure, call Maria, 466-8930.

Passive Solar Builders: Locally owned general contractor since 1980: quality home construction, renovations, and additions. Call Charlie, 466-2118.

Barbara Holloway Fine Handweaving: scarves, shawls, vests, jackets, coats, handwoven of luxurious chenille. Please call 466-2118 before visiting.

+++ EL PUENTE DE GALISTEO+++

Editor: Lucy R. Lippard

Production: Richard Shuff and Insty-Prints. Santa Fe

Contributing Editors: Anna Cardenas, Barbara Cooper, Joe Cooper, Maria Padilla, Moira Walden, S. Monroe.

Please send letters, comments, suggestions, contributions to EL PUENTE, HC 75, Box 77, Galisteo NM 87540, or call 466-1276 (no machine; mornings best).